

Brondesbury Park, Queens Park, London NW6

Weekly Rental Of £550 Monthly Rental Of £2,383



Available immediately is this 1100 sq ft three double bedroom, two bathroom (one en-suite) ground floor apartment with one off street parking space and direct access to a large communal garden. The newly decorated apartment further benefits from a fully fitted kitchen, a separate reception that leads out to the garden, guest W/C excellent storage, wood floors and high ceilings. Located a few minutes walk to Brondesbury station and the amenities of either Kilburn High Road or Salusbury Road. Offered on a furnished basis

- Brondesbury Park (4 minutes/0.2 miles)
- Kilburn (8 minutes/0.4 miles)
- Brondesbury (10 minutes/0.5 miles)
- Willesden Green (12 minutes/0.6 miles)
- West Hampstead (16 minutes/0.8 miles)

- Bedrooms: 3
- Receptions : 1
- Bathrooms: 2
- Property Type: Flat
- 3 large double bedrooms
- 2 bathrooms
- Off street parking for 1 car
- Direct access to a large communal garden
- Guest WC
- Available immediately and offered furnished

Call 020 7759 2199 to view this property, or visit www.vitaproperties.co.uk for more details

27 Northways Parade, College Crescent, London, NW3 5DN | T: 020 7759 2199 | E: enquiries@vitaproperties.co.uk

We make all efforts to ensure this information is accurate, but we can't guarantee it.

Brondesbury Park, Queens Park, London NW6

Weekly Rental Of £550 Monthly Rental Of £2,383



Call 020 7759 2199 to view this property, or visit www.vitaproperties.co.uk for more details

27 Northways Parade, College Crescent, London, NW3 5DN | T: 020 7759 2199 | E: enquiries@vitaproperties.co.uk

We make all efforts to ensure this information is accurate, but we can't guarantee it.

Brondesbury Park, Queens Park, London NW6

Weekly Rental Of £550 Monthly Rental Of £2,383



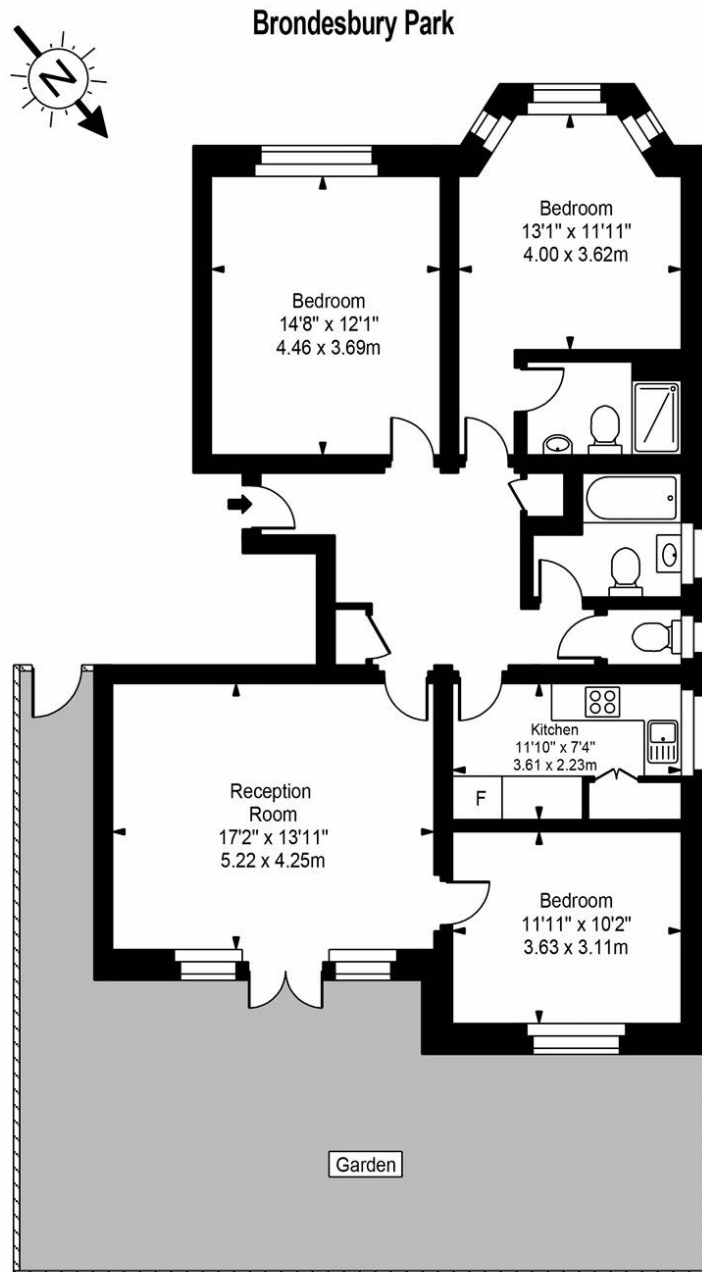
Call 020 7759 2199 to view this property, or visit www.vitaproperties.co.uk for more details

27 Northways Parade, College Crescent, London, NW3 5DN | T: 020 7759 2199 | E: enquiries@vitaproperties.co.uk

We make all efforts to ensure this information is accurate, but we can't guarantee it.

Brondesbury Park, Queens Park, London NW6

Weekly Rental Of £550 Monthly Rental Of £2,383



Ground Floor



Approx Gross Internal Area **1109 Sq Ft - 103.03 Sq M**

For Illustration Purposes Only - Not To Scale
Floor plan by www.creativeplanettk.com

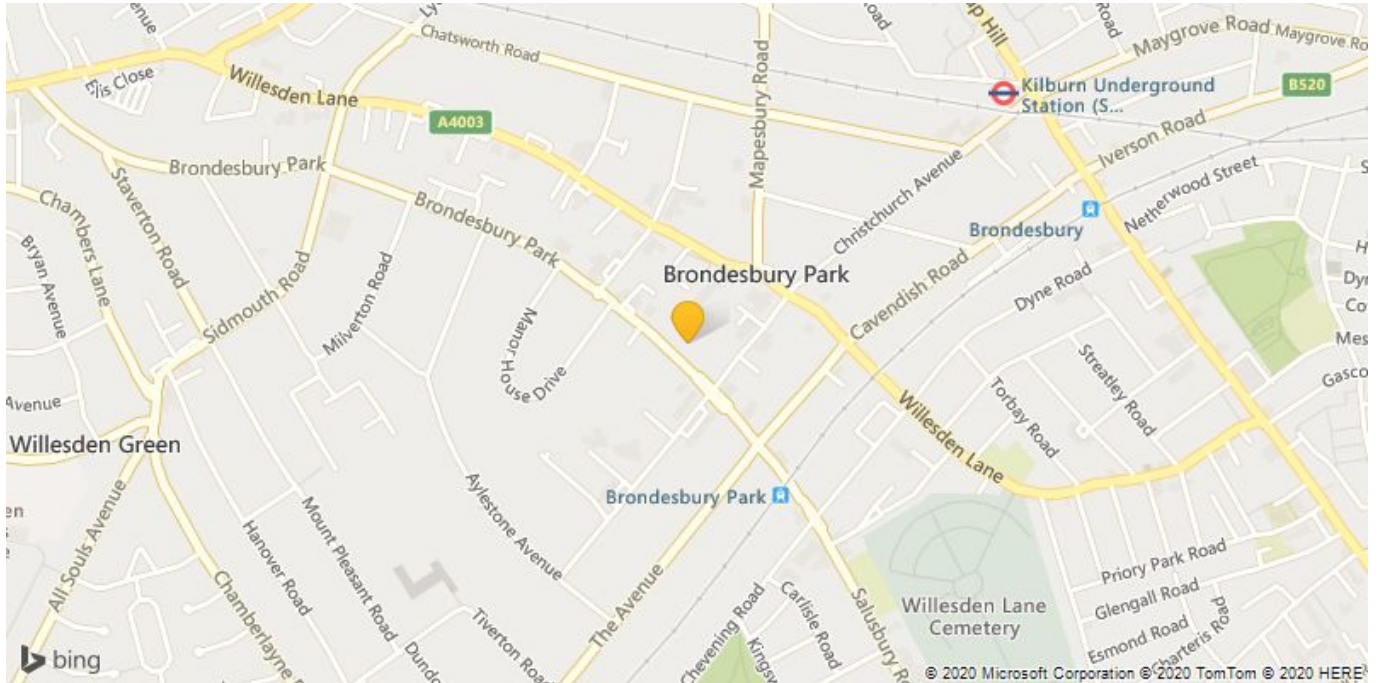
Call 020 7759 2199 to view this property, or visit www.vitaproperties.co.uk for more details

27 Northways Parade, College Crescent, London, NW3 5DN | T: 020 7759 2199 | E: enquiries@vitaproperties.co.uk

We make all efforts to ensure this information is accurate, but we can't guarantee it.

Brondesbury Park, Queens Park, London NW6

Weekly Rental Of £550 Monthly Rental Of £2,383



Call 020 7759 2199 to view this property, or visit www.vitaproperties.co.uk for more details

27 Northways Parade, College Crescent, London, NW3 5DN | T: 020 7759 2199 | E: enquiries@vitaproperties.co.uk

We make all efforts to ensure this information is accurate, but we can't guarantee it.