

Northway, Hampstead Garden Suburb, London NW11

£2,150,000



Located on this lovely tree-lined street in the heart of Hampstead Garden Suburb, within walking distance to the open spaces of Bigwood and the shops and cafes of Marketplace, a charming three storey, four/five bedroom detached house, set back and up from the road on a prominent position.

In the same ownership for nearly 40 years, this charming house benefits from off street parking for two cars plus an integral single garage as well as a beautifully maintained rear garden.

The accommodation comprises a 31' double reception room with conservatory leading onto a beautiful 56' garden, fully fitted kitchen, lounge with direct access to the garden, guest w/c, four/five bedrooms and two bathrooms.

The house could perhaps be extended but this would be strictly subject to both local authority and Hampstead Garden Suburb Trust consent.

- East Finchley (18 minutes/0.9 miles)
- Golders Green (18 minutes/0.9 miles)
- Finchley Central (24 minutes/1.2 miles)

- Bedrooms: 5+
- Receptions : 3
- Bathrooms: 2
- Property Type: House
- Garden: Yes
- Garage: Yes
- Detached
- Four Large Bedrooms
- Double volume Reception
- Moments to Shops of Market Place

Call 020 7759 2199 to view this property, or visit www.vitaproperties.co.uk for more details

27 Northways Parade, College Crescent, London, NW3 5DN | T: 020 7759 2199 | E: enquiries@vitaproperties.co.uk

We make all efforts to ensure this information is accurate, but we can't guarantee it.

Northway, Hampstead Garden Suburb,
London NW11

£2,150,000



- Brent Cross (26 minutes/1.3 miles)

Call 020 7759 2199 to view this property, or visit www.vitaproperties.co.uk for more details

27 Northways Parade, College Crescent, London, NW3 5DN | T: 020 7759 2199 | E: enquiries@vitaproperties.co.uk

We make all efforts to ensure this information is accurate, but we can't guarantee it.

Northway, Hampstead Garden Suburb, London NW11

£2,150,000



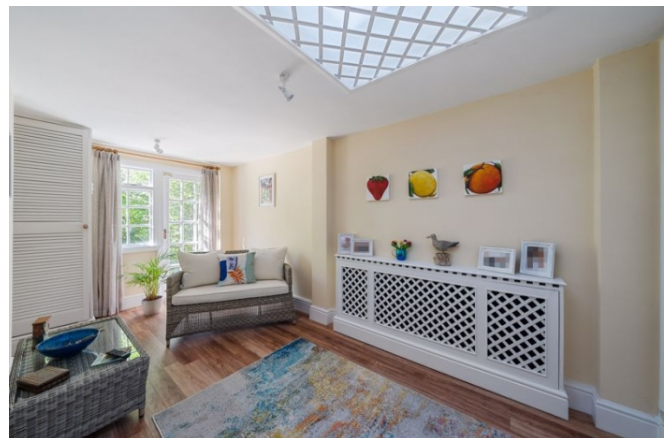
Call 020 7759 2199 to view this property, or visit www.vitaproperties.co.uk for more details

27 Northways Parade, College Crescent, London, NW3 5DN | T: 020 7759 2199 | E: enquiries@vitaproperties.co.uk

We make all efforts to ensure this information is accurate, but we can't guarantee it.

Northway, Hampstead Garden Suburb, London NW11

£2,150,000



Call 020 7759 2199 to view this property, or visit www.vitaproperties.co.uk for more details

27 Northways Parade, College Crescent, London, NW3 5DN | T: 020 7759 2199 | E: enquiries@vitaproperties.co.uk

We make all efforts to ensure this information is accurate, but we can't guarantee it.

Northway, Hampstead Garden Suburb, London NW11

£2,150,000

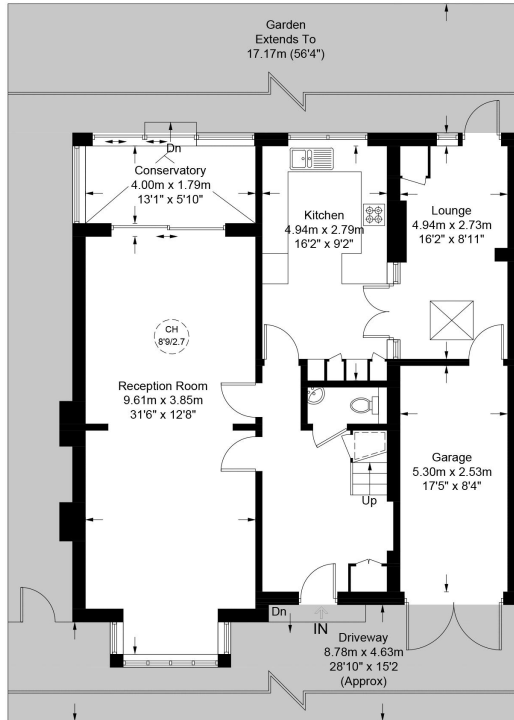


Northway, NW11

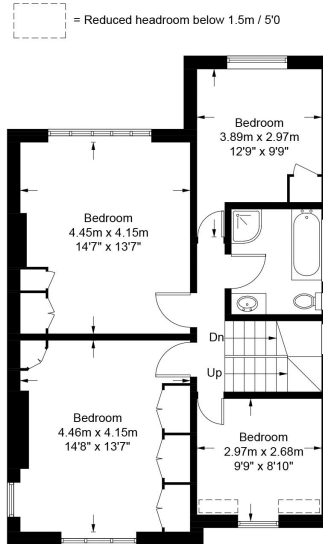
Approximate Gross Internal Area = 2160 sq ft / 200.7 sq m
(Excluding Reduced Headroom / Including Garage)

Reduced Headroom = 194 sq ft / 18.0 sq m

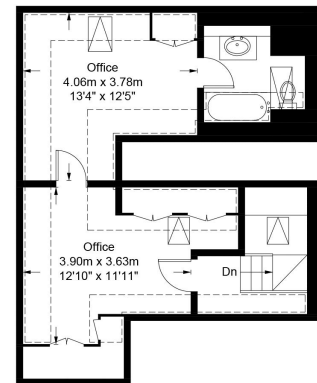
Total = 2354 sq ft / 218.7 sq m



Ground Floor



First Floor

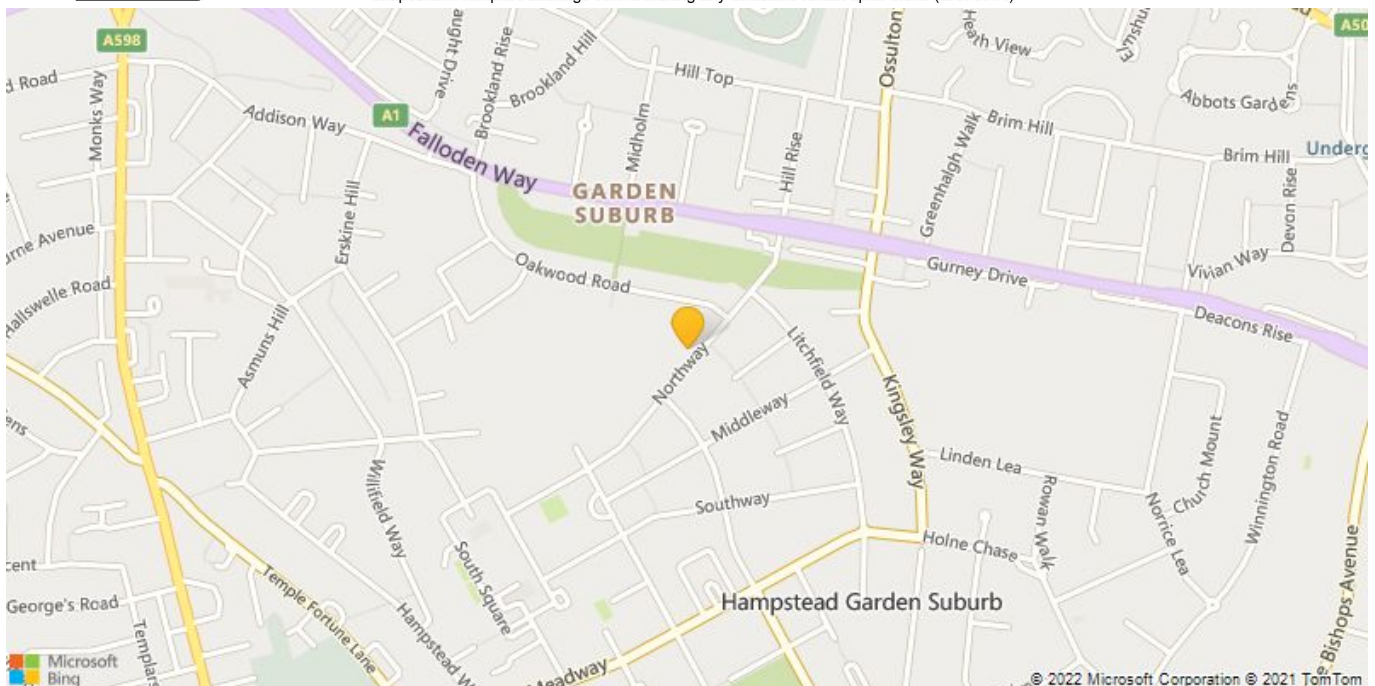


Second Floor



Certified
Property
Measurer

This plan is for layout guidance only. Not drawn to scale unless stated. Windows and door openings are approximate. Whilst every care is taken in the preparation of this plan, please check all dimensions, shapes and compass bearings before making any decisions reliant upon them. (ID878544)



Call 020 7759 2199 to view this property, or visit www.vitaproperties.co.uk for more details

27 Northways Parade, College Crescent, London, NW3 5DN | T: 020 7759 2199 | E: enquiries@vitaproperties.co.uk

We make all efforts to ensure this information is accurate, but we can't guarantee it.