

# Ryders Terrace, St Johns Wood, London, NW8

Weekly Rental Of £692.31 Monthly Rental Of £2,999



Luxurious recently refurbished 2/3 bedroom mews house, with a Stucco Front. The house consists of having 2/3 bedrooms, open plan dining room, modern kitchen and a family bathroom. The house benefits from having a gas fireplace in reception, alarm and Intercom Entry phone and a private roof terrace. Close to the local amenities of Abbey Road. Available 20th Oct . Furnished or unfurnished

- St Johns Wood (8 minutes/0.4 miles)
- Kilburn High Road (8 minutes/0.4 miles)
- Maida Vale (8 minutes/0.4 miles)
- South Hampstead (10 minutes/0.5 miles)
- Kilburn Park (10 minutes/0.5 miles)
- Bedrooms: 2
- Receptions : 1
- Bathrooms: 2
- Property Type: House
- Stucco fronted mews house
- 2/3 bedrooms with loft
- Open plan dining and reception room
- Fitted kitchen with stainless steel appliances
- Roof terrace above kitchen
- Residents parking area
- Available 20th Oct
- Furnished or Unfurnished

Call 020 7759 2199 to view this property, or visit [www.vitaproperties.co.uk](http://www.vitaproperties.co.uk) for more details

27 Northways Parade, College Crescent, London, NW3 5DN | T: 020 7759 2199 | E: [enquiries@vitaproperties.co.uk](mailto:enquiries@vitaproperties.co.uk)

We make all efforts to ensure this information is accurate, but we can't guarantee it.

# Ryders Terrace, St Johns Wood, London, NW8

Weekly Rental Of £692.31 Monthly Rental Of £2,999



Call 020 7759 2199 to view this property, or visit [www.vitaproperties.co.uk](http://www.vitaproperties.co.uk) for more details

27 Northways Parade, College Crescent, London, NW3 5DN | T: 020 7759 2199 | E: [enquiries@vitaproperties.co.uk](mailto:enquiries@vitaproperties.co.uk)

We make all efforts to ensure this information is accurate, but we can't guarantee it.

# Ryders Terrace, St Johns Wood, London, NW8

Weekly Rental Of £692.31 Monthly Rental Of £2,999



Call 020 7759 2199 to view this property, or visit [www.vitaproperties.co.uk](http://www.vitaproperties.co.uk) for more details

27 Northways Parade, College Crescent, London, NW3 5DN | T: 020 7759 2199 | E: [enquiries@vitaproperties.co.uk](mailto:enquiries@vitaproperties.co.uk)

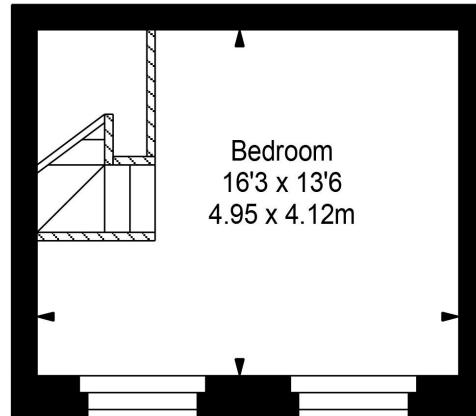
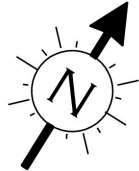
We make all efforts to ensure this information is accurate, but we can't guarantee it.

# Ryders Terrace, St Johns Wood, London, NW8

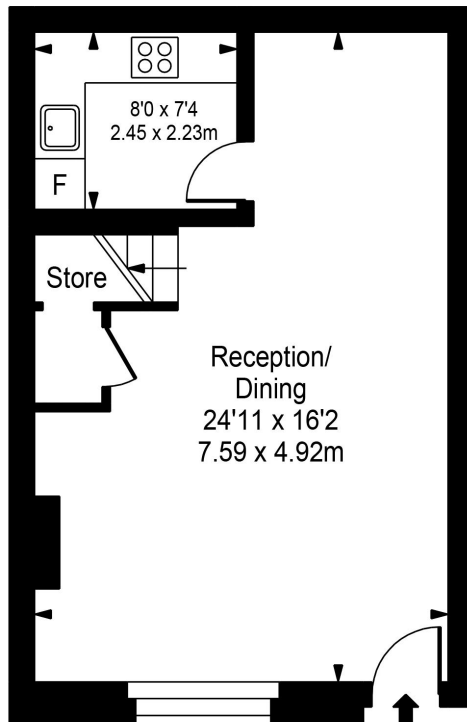
Weekly Rental Of £692.31 Monthly Rental Of £2,999



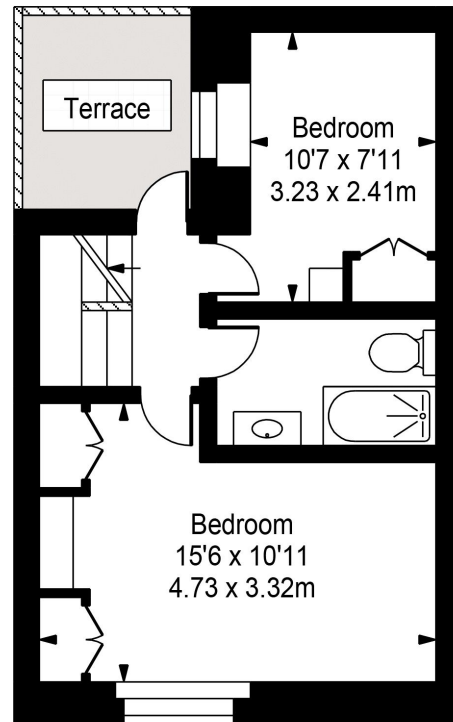
## Ryders Terrace



Second Floor



Ground Floor



First Floor



Approx Gross Internal Area **952 Sq Ft - 88.44 Sq M**

FOR ILLUSTRATIVE PURPOSES ONLY. NOT TO SCALE.

Whilst every attempt has been made to ensure the accuracy of the floorplan shown, all measurements, positioning, fixtures, fittings and any other data shown are an approximate interpretation for illustrative purposes only and are not to scale. No responsibility is taken for any error, omission, miss-statement or use of data shown.

Floor plan by [www.bestangle.co.uk](http://www.bestangle.co.uk)

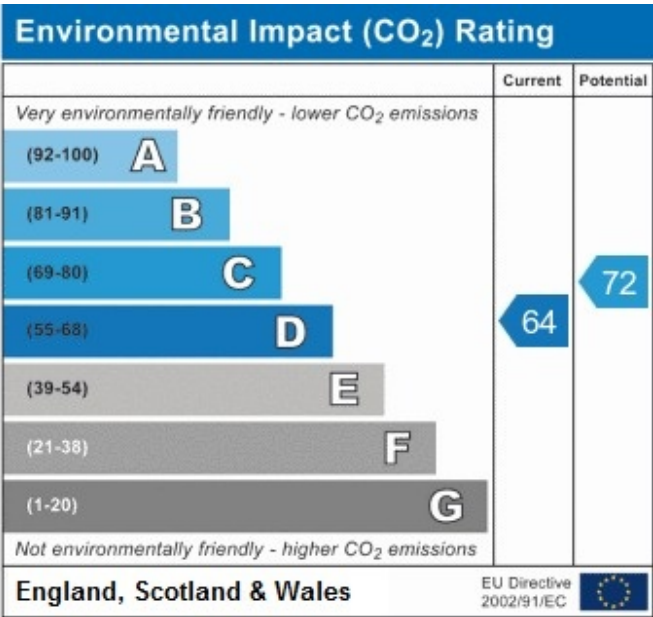
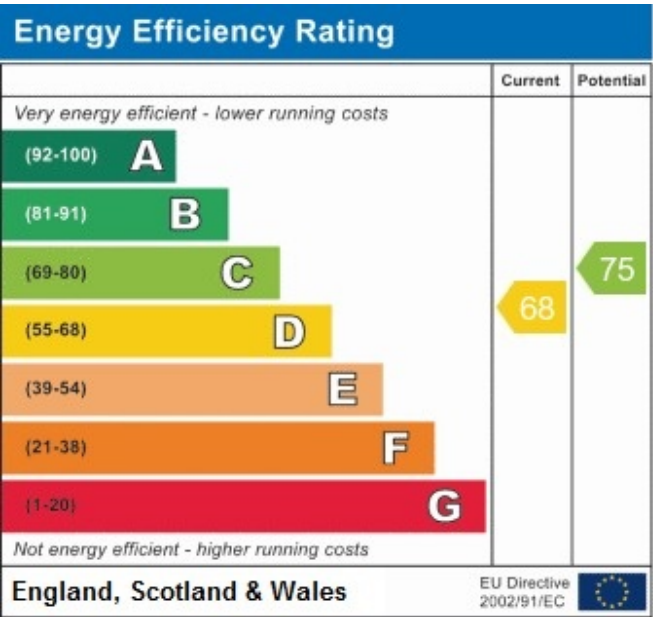
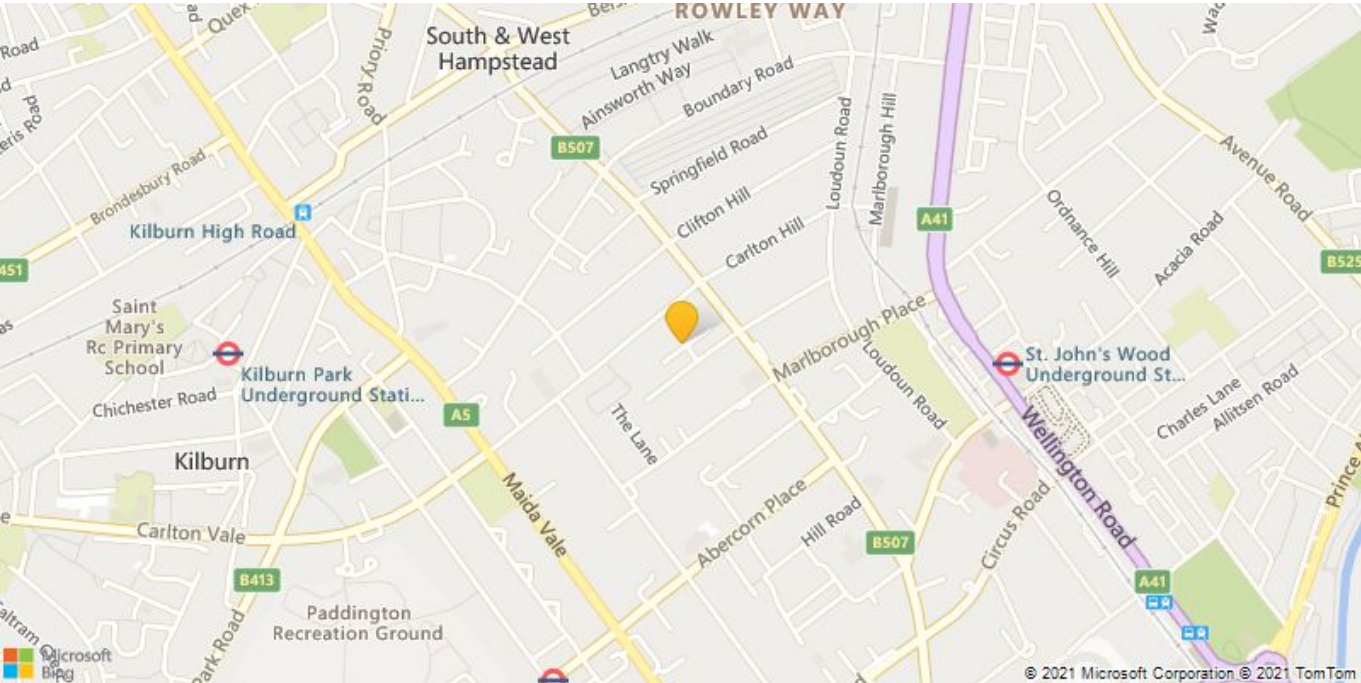
Call 020 7759 2199 to view this property, or visit [www.vitaproperties.co.uk](http://www.vitaproperties.co.uk) for more details

27 Northways Parade, College Crescent, London, NW3 5DN | T: 020 7759 2199 | E: [enquiries@vitaproperties.co.uk](mailto:enquiries@vitaproperties.co.uk)

We make all efforts to ensure this information is accurate, but we can't guarantee it.

# Ryders Terrace, St Johns Wood, London, NW8

Weekly Rental Of £692.31Monthly Rental Of £2,999



Call 020 7759 2199 to view this property, or visit [www.vitaproperties.co.uk](http://www.vitaproperties.co.uk) for more details