

West Heath Place, 1B Hodford Road, London, NW11

Weekly Rental Of £2,300 Monthly Rental Of £9,967



A spectacular, luxury three double bedroom, three bathroom penthouse apartment comprising 2700 sq ft / 249 sq m set within a prestigious development with stunning panoramic views over the South and West London skyline. The apartment comprises a large reception room with fireplace, modern open plan Poggenpohl kitchen/breakfast room with separate utility room, guest wc,, three private balconies, storage room and two underground parking spaces. Other features include air conditioning to principal rooms, a private gym for residents of the building and a communal garden. Available immediately on a furnished or unfurnished basis.

- Golders Green (8 minutes/0.4 miles)
- Cricklewood (16 minutes/0.8 miles)
- Brent Cross (20 minutes/1 miles)
- Hampstead (22 minutes/1.1 miles)
- West Hampstead (26 minutes/1.3 miles)

- Bedrooms: 3
- Receptions : 2
- Bathrooms: 3
- Property Type: Flat
- Three double bedroom suites each with en-suite bathrooms
- Concierge
- Modern and spacious open-plan Poggenpohl integrated kitchen
- Underfloor heating throughout and air conditioning to principal rooms
- Access to the lovely communal garden and gym
- Two underground garage spaces

Call 020 7759 2199 to view this property, or visit www.vitaproperties.co.uk for more details

27 Northways Parade, College Crescent, London, NW3 5DN | T: 020 7759 2199 | E: enquiries@vitaproperties.co.uk

We make all efforts to ensure this information is accurate, but we can't guarantee it.

West Heath Place, 1B Hodford Road, London, NW11

Weekly Rental Of £2,300 Monthly Rental Of £9,967



Call 020 7759 2199 to view this property, or visit www.vitaproperties.co.uk for more details

27 Northways Parade, College Crescent, London, NW3 5DN | T: 020 7759 2199 | E: enquiries@vitaproperties.co.uk

We make all efforts to ensure this information is accurate, but we can't guarantee it.

West Heath Place, 1B Hodford Road, London, NW11

Weekly Rental Of £2,300 Monthly Rental Of £9,967



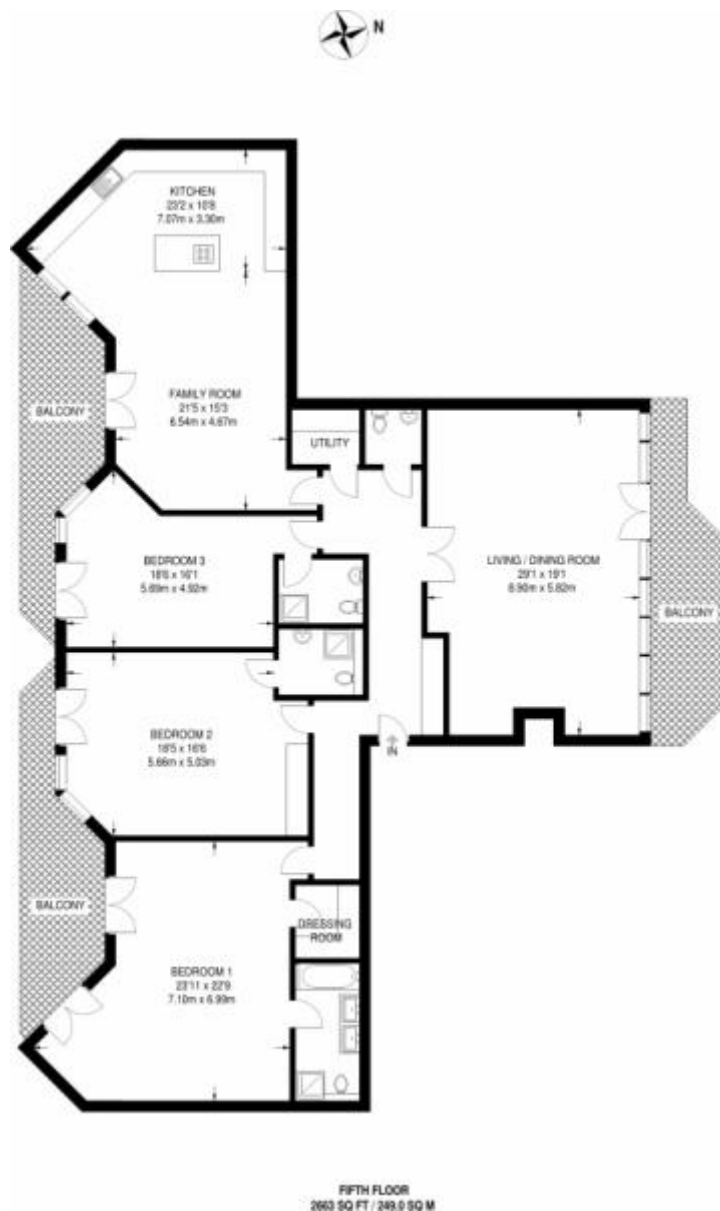
Call 020 7759 2199 to view this property, or visit www.vitaproperties.co.uk for more details

27 Northways Parade, College Crescent, London, NW3 5DN | T: 020 7759 2199 | E: enquiries@vitaproperties.co.uk

We make all efforts to ensure this information is accurate, but we can't guarantee it.

West Heath Place, 1B Hodford Road,
London, NW11

Weekly Rental Of £2,300 Monthly Rental Of £9,967



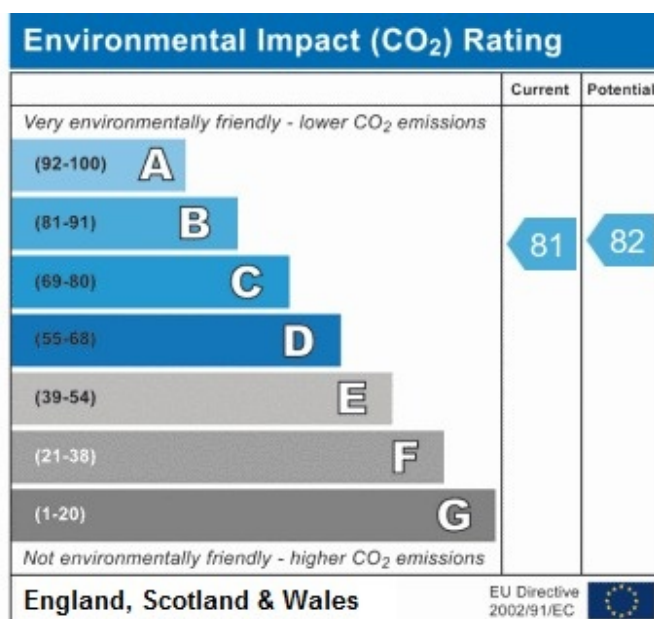
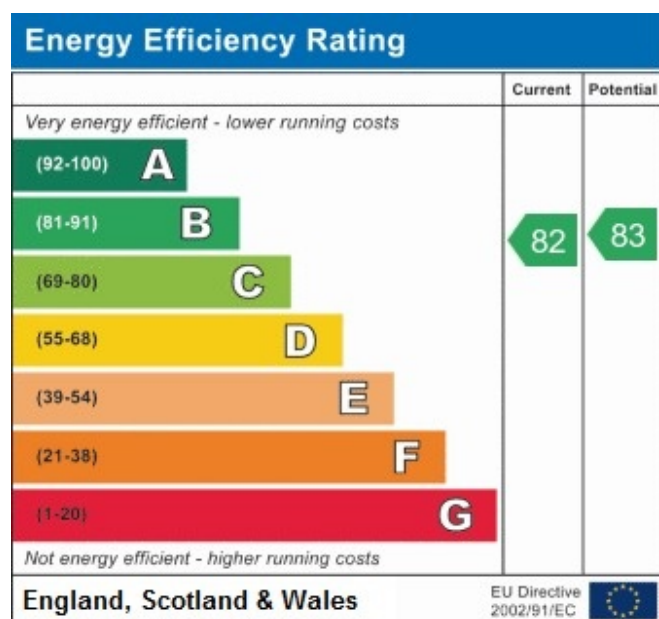
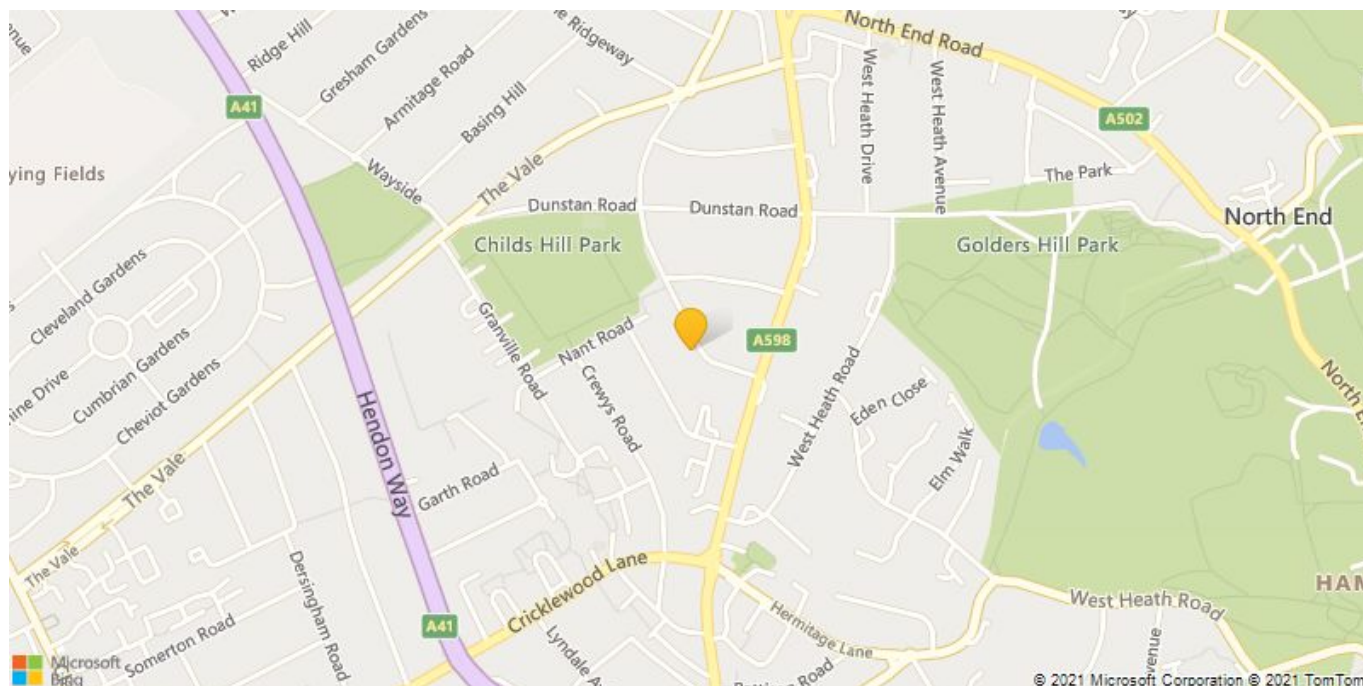
Call 020 7759 2199 to view this property, or visit www.vitaproperties.co.uk for more details

27 Northways Parade, College Crescent, London, NW3 5DN | T: 020 7759 2199 | E: enquiries@vitaproperties.co.uk

We make all efforts to ensure this information is accurate, but we can't guarantee it.

West Heath Place, 1B Hodford Road, London, NW11

Weekly Rental Of £2,300 Monthly Rental Of £9,967



Call 020 7759 2199 to view this property, or visit www.vitaproperties.co.uk for more details

27 Northways Parade, College Crescent, London, NW3 5DN | T: 020 7759 2199 | E: enquiries@vitaproperties.co.uk

We make all efforts to ensure this information is accurate, but we can't guarantee it.