

# Northwick Terrace, St Johns Wood, London NW8

£1,500,000



Presenting a stunning, garden-flat, based within a short walk to the beautiful Little Venice, Regents Park and St Johns Wood.

This three bed apartment comprises a lovely double reception room & dining room, with electric fireplace, light-flooding floor-to-ceiling windows and access onto a quaint private garden. A large, functional kitchen, three large double bedrooms, each with implemented storage and the master benefitting from an en-suite bathroom with 'his & her' sinks, and finally a separate family bathroom and guest WC.

This beautifully presented property is ideally situated for the vast array of local amenities, and the highly rated shops and restaurants of Little Venice.

- Edgware Road (10 minutes/0.5 miles)
- Maida Vale (10 minutes/0.5 miles)
- St Johns Wood (12 minutes/0.6 miles)
- Baker Street (16 minutes/0.8 miles)
- Kilburn Park (20 minutes/1 miles)

- Bedrooms: 3
- Receptions : 2
- Bathrooms: 3
- Property Type: Flat
- Garden: Yes
- Three Bed, Three Bath
- Beautifully Presented
- Close to Little Venice
- Bright & Spacious
- Leasehold

Call 020 7759 2199 to view this property, or visit [www.vitaproperties.co.uk](http://www.vitaproperties.co.uk) for more details

27 Northways Parade, College Crescent, London, NW3 5DN | T: 020 7759 2199 | E: [enquiries@vitaproperties.co.uk](mailto:enquiries@vitaproperties.co.uk)

We make all efforts to ensure this information is accurate, but we can't guarantee it.



# Northwick Terrace, St Johns Wood, London NW8

£1,500,000



Call 020 7759 2199 to view this property, or visit [www.vitaproperties.co.uk](http://www.vitaproperties.co.uk) for more details

27 Northways Parade, College Crescent, London, NW3 5DN | T: 020 7759 2199 | E: [enquiries@vitaproperties.co.uk](mailto:enquiries@vitaproperties.co.uk)

We make all efforts to ensure this information is accurate, but we can't guarantee it.



# Northwick Terrace, St Johns Wood, London NW8

£1,500,000



Call 020 7759 2199 to view this property, or visit [www.vitaproperties.co.uk](http://www.vitaproperties.co.uk) for more details

27 Northways Parade, College Crescent, London, NW3 5DN | T: 020 7759 2199 | E: [enquiries@vitaproperties.co.uk](mailto:enquiries@vitaproperties.co.uk)

We make all efforts to ensure this information is accurate, but we can't guarantee it.

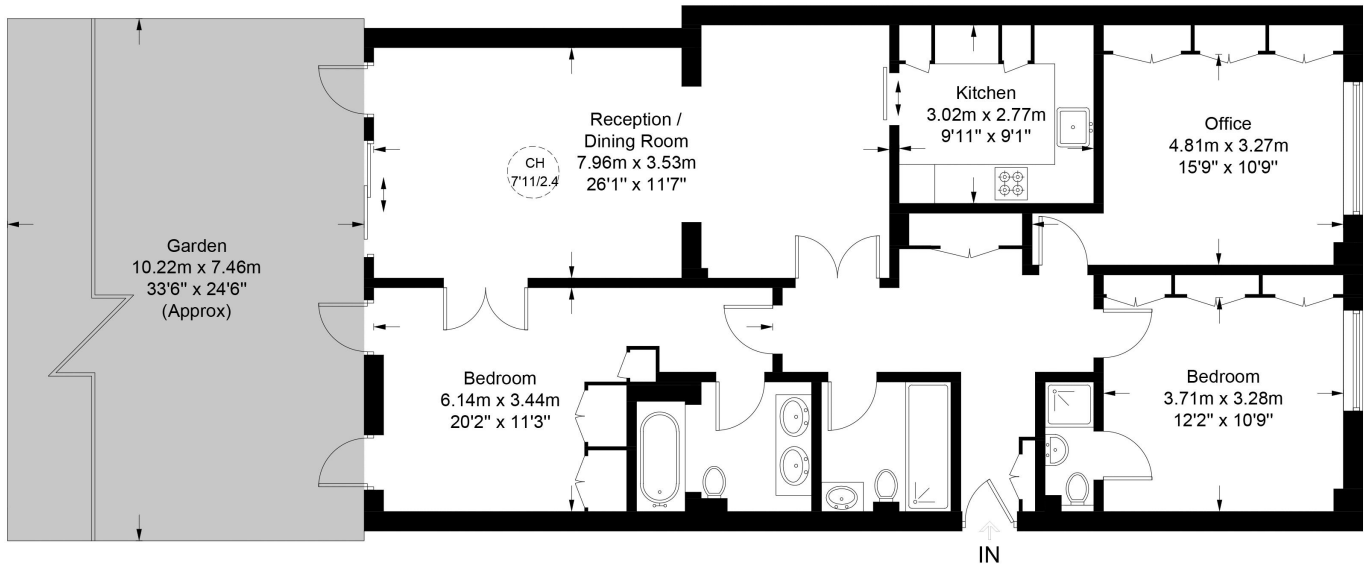
# Northwick Terrace, St Johns Wood, London NW8

£1,500,000

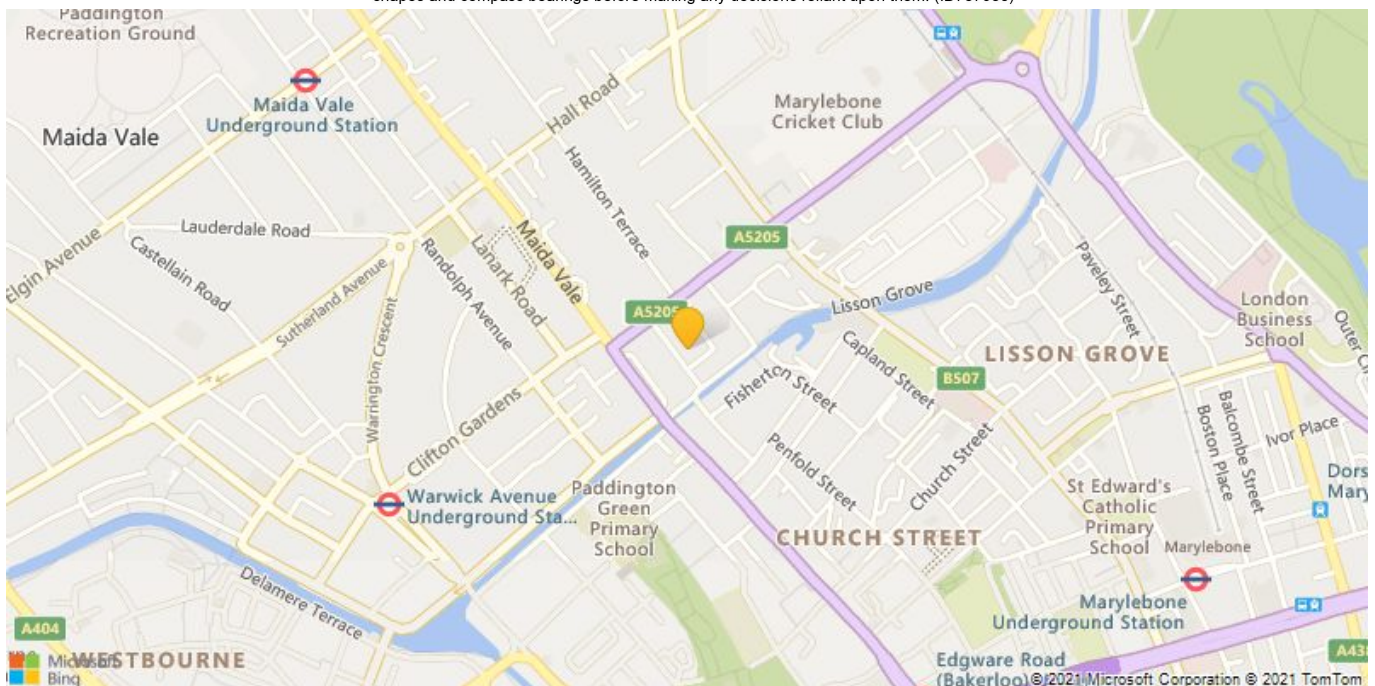


## Northwick Terrace, NW8

Approximate Gross Internal Area = 1186 sq ft / 110.2 sq m



This plan is for layout guidance only. Not drawn to scale unless stated. Windows and door openings are approximate. Whilst every care is taken in the preparation of this plan, please check all dimensions, shapes and compass bearings before making any decisions reliant upon them. (ID787930)



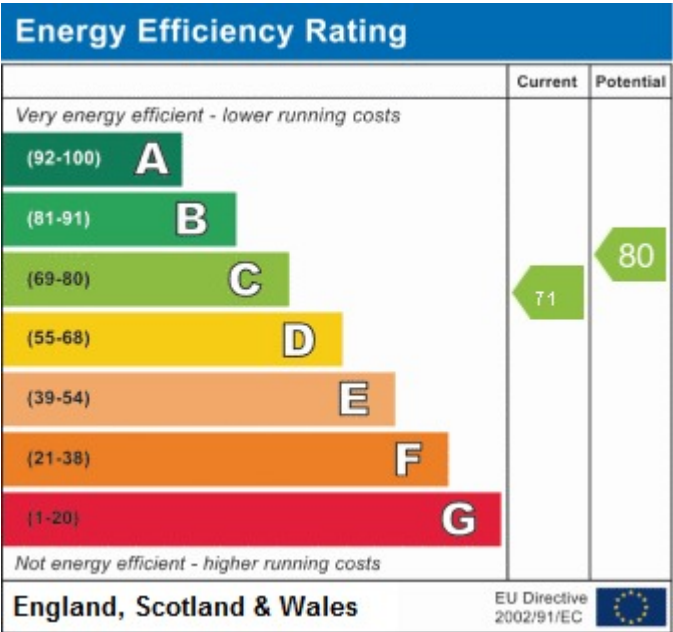
Call 020 7759 2199 to view this property, or visit [www.vitaproperties.co.uk](http://www.vitaproperties.co.uk) for more details

27 Northways Parade, College Crescent, London, NW3 5DN | T: 020 7759 2199 | E: [enquiries@vitaproperties.co.uk](mailto:enquiries@vitaproperties.co.uk)

We make all efforts to ensure this information is accurate, but we can't guarantee it.

Northwick Terrace, St Johns Wood,  
London NW8

£1,500,000



Call 020 7759 2199 to view this property, or visit [www.vitaproperties.co.uk](http://www.vitaproperties.co.uk) for more details

27 Northways Parade, College Crescent, London, NW3 5DN | T: 020 7759 2199 | E: [enquiries@vitaproperties.co.uk](mailto:enquiries@vitaproperties.co.uk)  
We make all efforts to ensure this information is accurate, but we can't guarantee it.