

Dinerman Court, Boundary Road, St Johns Wood, London NW8

£550,000



Presenting a modern, two- bedroom apartment, situated in a private, purpose built block in St Johns Wood, NW8. The apartment is situated on the 5th floor (with lift access) and boasts lovely, expansive views across London. Comprising a large reception room with light-flooding windows; a fully-equipped kitchen with built in appliances, an abundance of cupboard space and work surfaces; good-sized double bedrooms, both offering extensive built-in wardrobe space; and a clean and modern family bathroom. The hallway also offers ample additional storage space and a useful WFH corner.

- Bedrooms: 2
- Receptions : 1
- Bathrooms: 1
- Property Type: Flat
- Parking: Yes
- Abundance of Natural Light
- 5th Floor (Lift)
- Work From Home Office
- Share Of Freehold

This block has an excellent reputation for being extremely well managed, and is offered inclusive of one secure off-street residential parking space. Ideally situated for local transport links from South Hampstead Station (Overground) being a mere three minute walk away and Swiss Cottage Station (Jubilee Line), 7 mins walk away) together with a large array of local shops, bars, restaurants and other amenities. Share of Freehold.

- South Hampstead (2 minutes/0.1 miles)
- Swiss Cottage (6 minutes/0.3 miles)
- St Johns Wood (8 minutes/0.4 miles)

Call 020 7759 2199 to view this property, or visit www.vitaproperties.co.uk for more details

27 Northways Parade, College Crescent, London, NW3 5DN | T: 020 7759 2199 | E: enquiries@vitaproperties.co.uk

We make all efforts to ensure this information is accurate, but we can't guarantee it.

Dinerman Court, Boundary Road, St Johns Wood, London NW8

£550,000



- Finchley Road (10 minutes/0.5 miles)
- Kilburn High Road (12 minutes/0.6 miles)

Call 020 7759 2199 to view this property, or visit www.vitaproperties.co.uk for more details

27 Northways Parade, College Crescent, London, NW3 5DN | T: 020 7759 2199 | E: enquiries@vitaproperties.co.uk

We make all efforts to ensure this information is accurate, but we can't guarantee it.

Dinerman Court, Boundary Road, St Johns Wood, London NW8

£550,000



Call 020 7759 2199 to view this property, or visit www.vitaproperties.co.uk for more details

27 Northways Parade, College Crescent, London, NW3 5DN | T: 020 7759 2199 | E: enquiries@vitaproperties.co.uk

We make all efforts to ensure this information is accurate, but we can't guarantee it.

Dinerman Court, Boundary Road, St Johns Wood, London NW8

£550,000



Call 020 7759 2199 to view this property, or visit www.vitaproperties.co.uk for more details

27 Northways Parade, College Crescent, London, NW3 5DN | T: 020 7759 2199 | E: enquiries@vitaproperties.co.uk

We make all efforts to ensure this information is accurate, but we can't guarantee it.

Dinerman Court, Boundary Road, St Johns Wood, London NW8

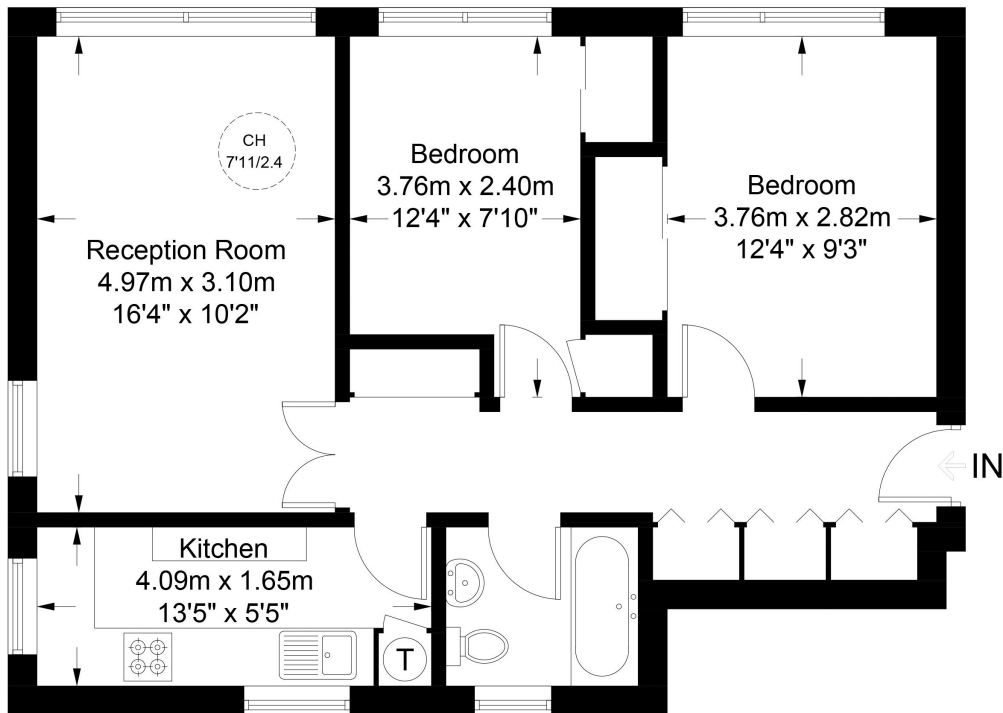
£550,000



Dinerman Court, NW8

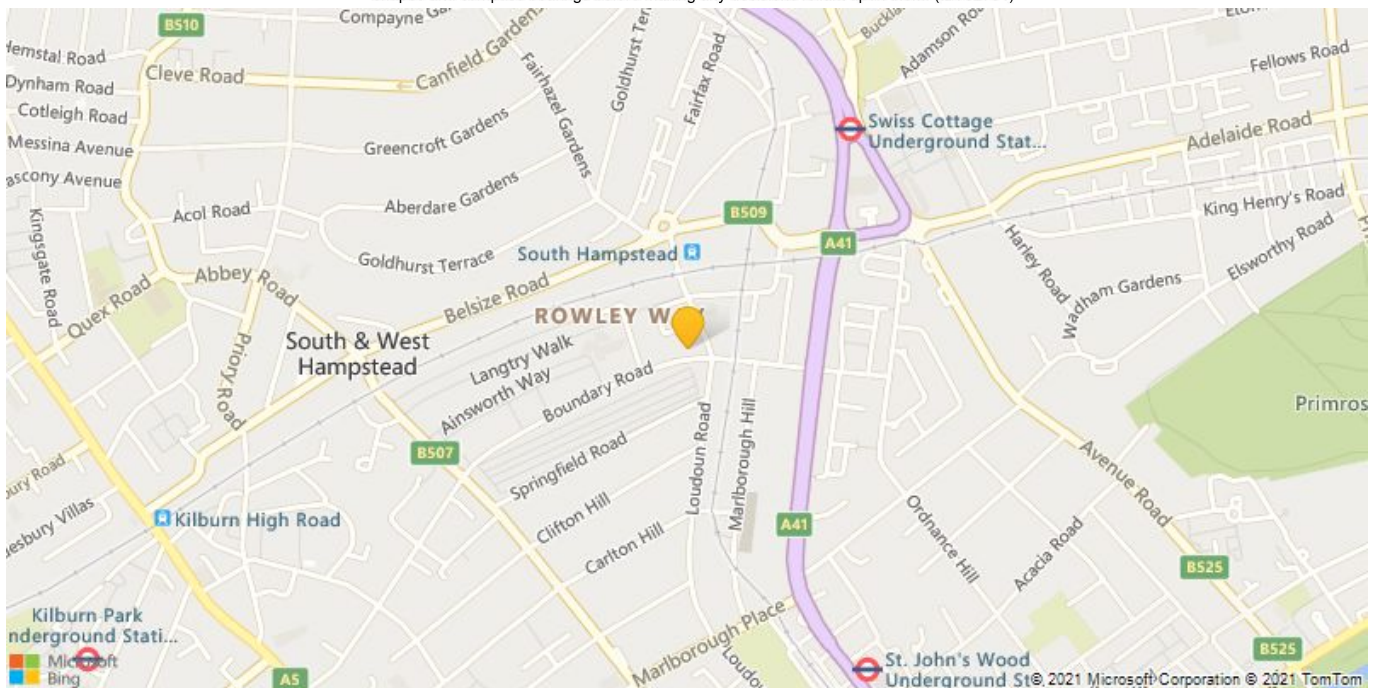


Approximate Gross Internal Area = 643 sq ft / 59.7 sq m



Fifth Floor

This plan is for layout guidance only. Not drawn to scale unless stated. Windows and door openings are approximate. Whilst every care is taken in the preparation of this plan, please check all dimensions, shapes and compass bearings before making any decisions reliant upon them. (ID782704)

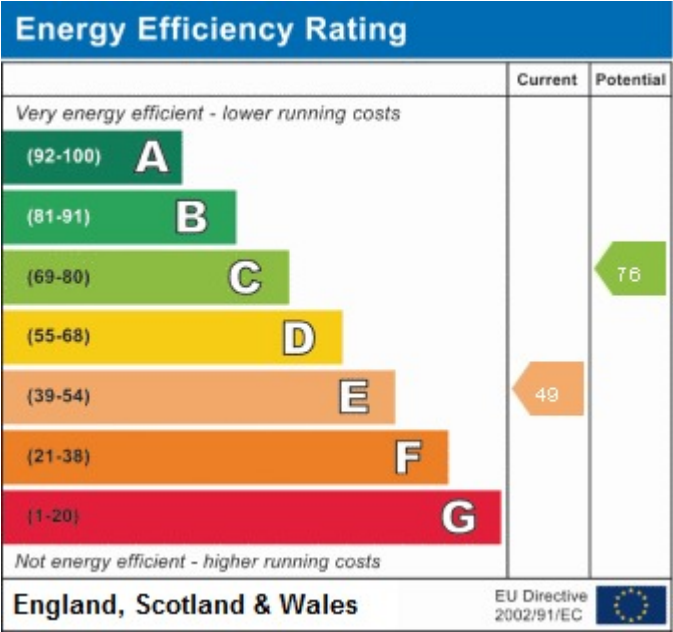


Call 020 7759 2199 to view this property, or visit www.vitaproperties.co.uk for more details

27 Northways Parade, College Crescent, London, NW3 5DN | T: 020 7759 2199 | E: enquiries@vitaproperties.co.uk

We make all efforts to ensure this information is accurate, but we can't guarantee it.

Dinerman Court, Boundary Road, St Johns
Wood, London NW8
£550,000



Call 020 7759 2199 to view this property, or visit www.vitaproperties.co.uk for more details