

Elgin Avenue, Maida Vale, London, W9

£1,050,000



Presenting this incredible, three bed, three bath, split-level apartment with an abundance of outside space. Comprising of a large, open-plan reception and kitchen with doors leading through to the amazing private garden space: Three large double bedrooms, two boasting en-suite bathrooms and the master offering a large walk-in wardrobe: separate shower room and finally the benefit of a second courtyard, located on the lower-ground floor.

Close to Little Venice, Westbourne Grove & Notting Hill.

- Ladbroke Grove (12 minutes/0.6 miles)
- Westbourne Grove (14 minutes/0.7 miles)
- Maida Vale (16 minutes/0.8 miles)
- Kilburn Park (16 minutes/0.8 miles)
- Kilburn High Road (20 minutes/1 miles)

- Bedrooms: 3
- Receptions : 1
- Bathrooms: 3
- Property Type: Flat
- Three Bed, Three Bath
- Split-Level
- Abundance of Outside Space
- Walk-in Wardrobe
- Bright & Airy
- Close to Little Venice, Westbourne Grove & Notting Hill.

Call 020 7759 2199 to view this property, or visit www.vitaproperties.co.uk for more details

27 Northways Parade, College Crescent, London, NW3 5DN | T: 020 7759 2199 | E: enquiries@vitaproperties.co.uk

We make all efforts to ensure this information is accurate, but we can't guarantee it.

Elgin Avenue, Maida Vale, London, W9

£1,050,000

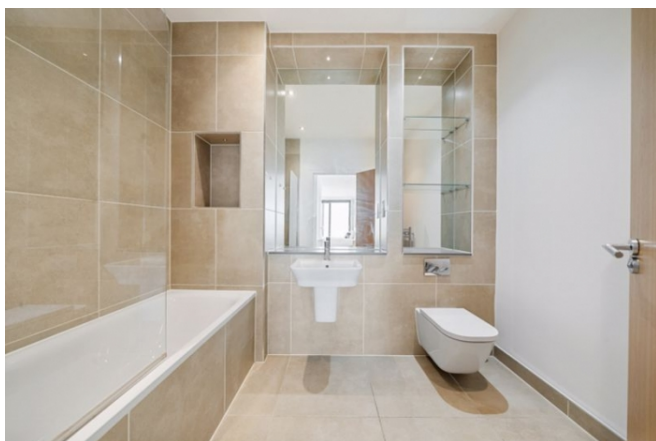
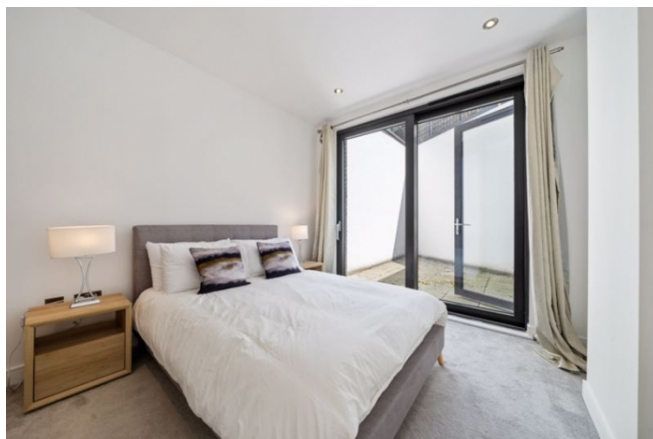


Call 020 7759 2199 to view this property, or visit www.vitaproperties.co.uk for more details

27 Northways Parade, College Crescent, London, NW3 5DN | T: 020 7759 2199 | E: enquiries@vitaproperties.co.uk

We make all efforts to ensure this information is accurate, but we can't guarantee it.

Elgin Avenue, Maida Vale, London, W9
£1,050,000



Call 020 7759 2199 to view this property, or visit www.vitaproperties.co.uk for more details

27 Northways Parade, College Crescent, London, NW3 5DN | T: 020 7759 2199 | E: enquiries@vitaproperties.co.uk

We make all efforts to ensure this information is accurate, but we can't guarantee it.

Elgin Avenue, Maida Vale, London, W9

£1,050,000

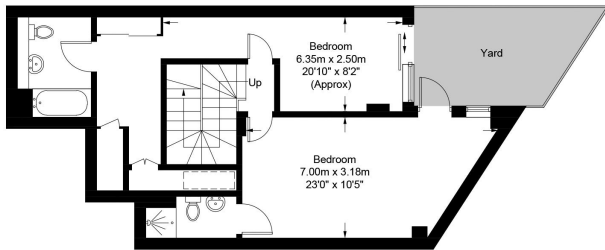


Elgin Avenue, W9

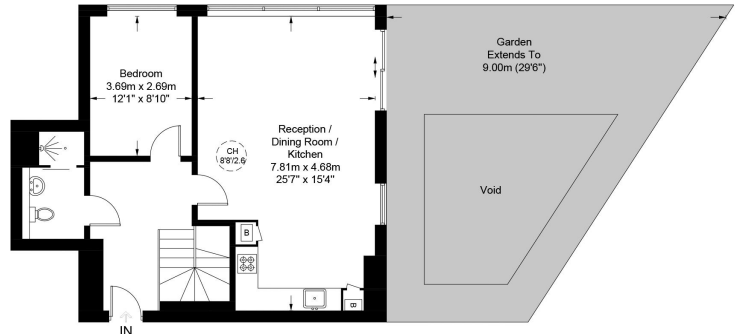
Approximate Gross Internal Area = 1303 sq ft / 121.1 sq m
(Excluding Reduced Headroom)
Reduced Headroom = 9 sq ft / 0.8 sq m
Total = 1312 sq ft / 121.9 sq m



- Reduced headroom below 1.5m / 5'0"

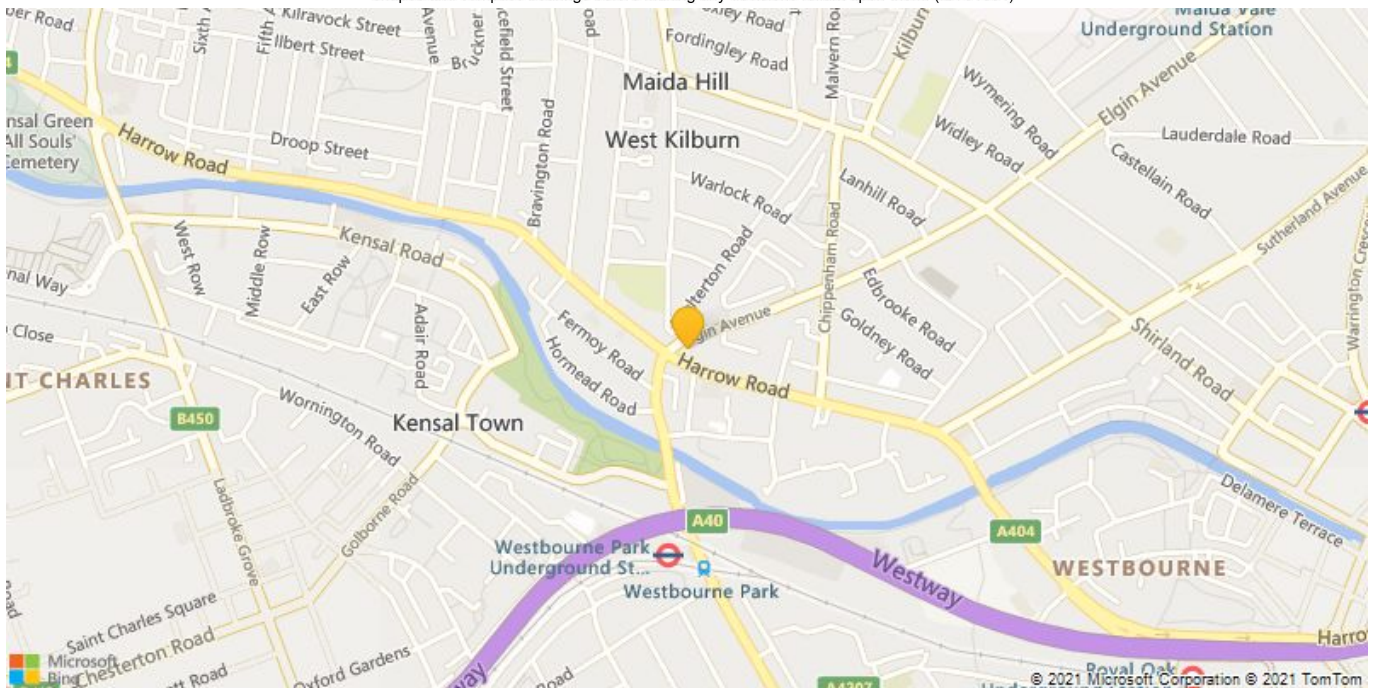


Lower Ground Floor



Ground Floor

This plan is for layout guidance only. Not drawn to scale unless stated. Windows and door openings are approximate. Whilst every care is taken in the preparation of this plan, please check all dimensions, shapes and compass bearings before making any decisions reliant upon them. (ID781384)



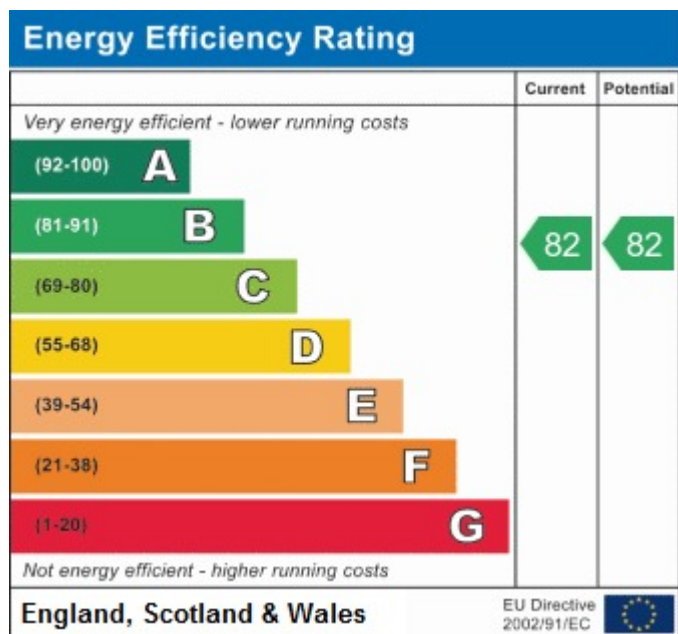
© 2021 Microsoft Corporation © 2021 TomTom

Call 020 7759 2199 to view this property, or visit www.vitaproperties.co.uk for more details

27 Northways Parade, College Crescent, London, NW3 5DN | T: 020 7759 2199 | E: enquiries@vitaproperties.co.uk

We make all efforts to ensure this information is accurate, but we can't guarantee it.

Elgin Avenue, Maida Vale, London, W9
£1,050,000



Call 020 7759 2199 to view this property, or visit www.vitaproperties.co.uk for more details

27 Northways Parade, College Crescent, London, NW3 5DN | T: 020 7759 2199 | E: enquiries@vitaproperties.co.uk

We make all efforts to ensure this information is accurate, but we can't guarantee it.