

Lancaster Mews, London W2

Weekly Rental Of £1,250 Monthly Rental Of £5,417



Presenting this fabulous, redeveloped, three-storey mews house.

This beautifully presented property implements lots of unique design elements, which increases the character and charm. Comprising of a large, light-flooded reception room, second reception room, designated study, contemporary, sand-wood kitchen with fully integrated appliances, 3 further bedrooms

with the master benefiting from en-suite bathroom access, utility room and guest WC.

Set on a picturesque, cobblestone street, this delightful mews house is ideally situated within prime 'W2' location, and situated a mere stone's throw from Kensington Gardens & Hyde Park.

- Bedrooms: 4
- Receptions : 1
- Bathrooms: 2
- Property Type: House
- Garden: Yes
- Mews House
- Three Bed, Two Bath
- Three-Storey
- Charming & Full of Character
- Available Late July

- Bayswater (8 minutes/0.4 miles)
- Edgware Road (14 minutes/0.7 miles)
- Westbourne Grove (16 minutes/0.8 miles)
- Notting Hill Gate (16 minutes/0.8 miles)
- Marble Arch (18 minutes/0.9 miles)

Call 020 7759 2199 to view this property, or visit www.vitaproperties.co.uk for more details

27 Northways Parade, College Crescent, London, NW3 5DN | T: 020 7759 2199 | E: enquiries@vitaproperties.co.uk

We make all efforts to ensure this information is accurate, but we can't guarantee it.

Lancaster Mews, London W2

Weekly Rental Of £1,250 Monthly Rental Of £5,417

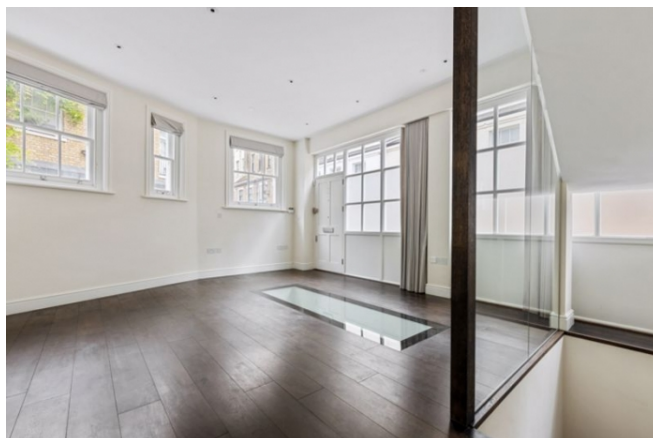
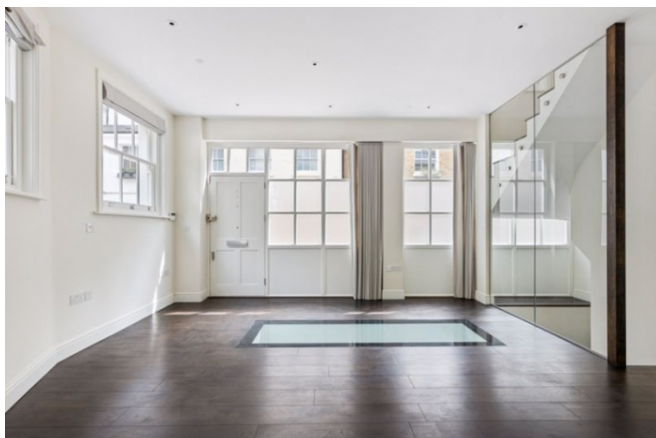


Call 020 7759 2199 to view this property, or visit www.vitaproperties.co.uk for more details

27 Northways Parade, College Crescent, London, NW3 5DN | T: 020 7759 2199 | E: enquiries@vitaproperties.co.uk
We make all efforts to ensure this information is accurate, but we can't guarantee it.

Lancaster Mews, London W2

Weekly Rental Of £1,250 Monthly Rental Of £5,417



Call 020 7759 2199 to view this property, or visit www.vitaproperties.co.uk for more details

27 Northways Parade, College Crescent, London, NW3 5DN | T: 020 7759 2199 | E: enquiries@vitaproperties.co.uk
We make all efforts to ensure this information is accurate, but we can't guarantee it.

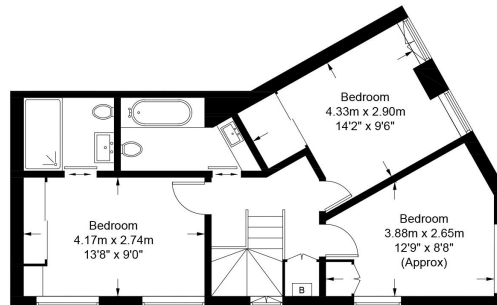
Lancaster Mews, London W2

Weekly Rental Of £1,250 Monthly Rental Of £5,417

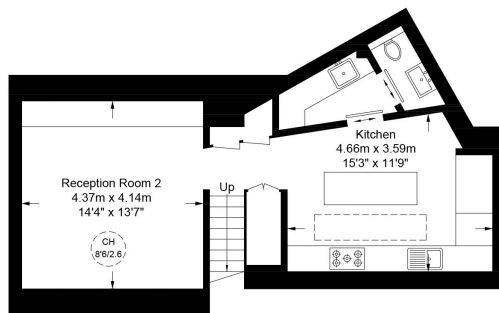


Lancaster Mews, W2

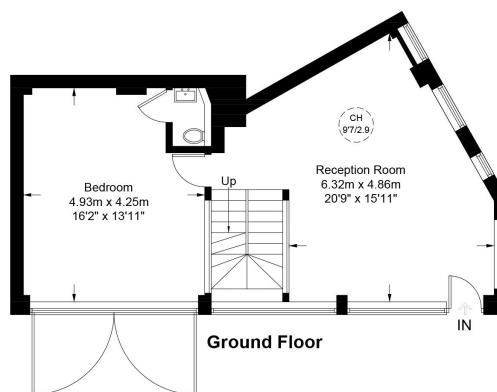
Approximate Gross Internal Area = 1129 sq ft / 104.9 sq m
 Basement = 499 sq ft / 46.4 sq m
 Total = 1628 sq ft / 151.3 sq m



First Floor

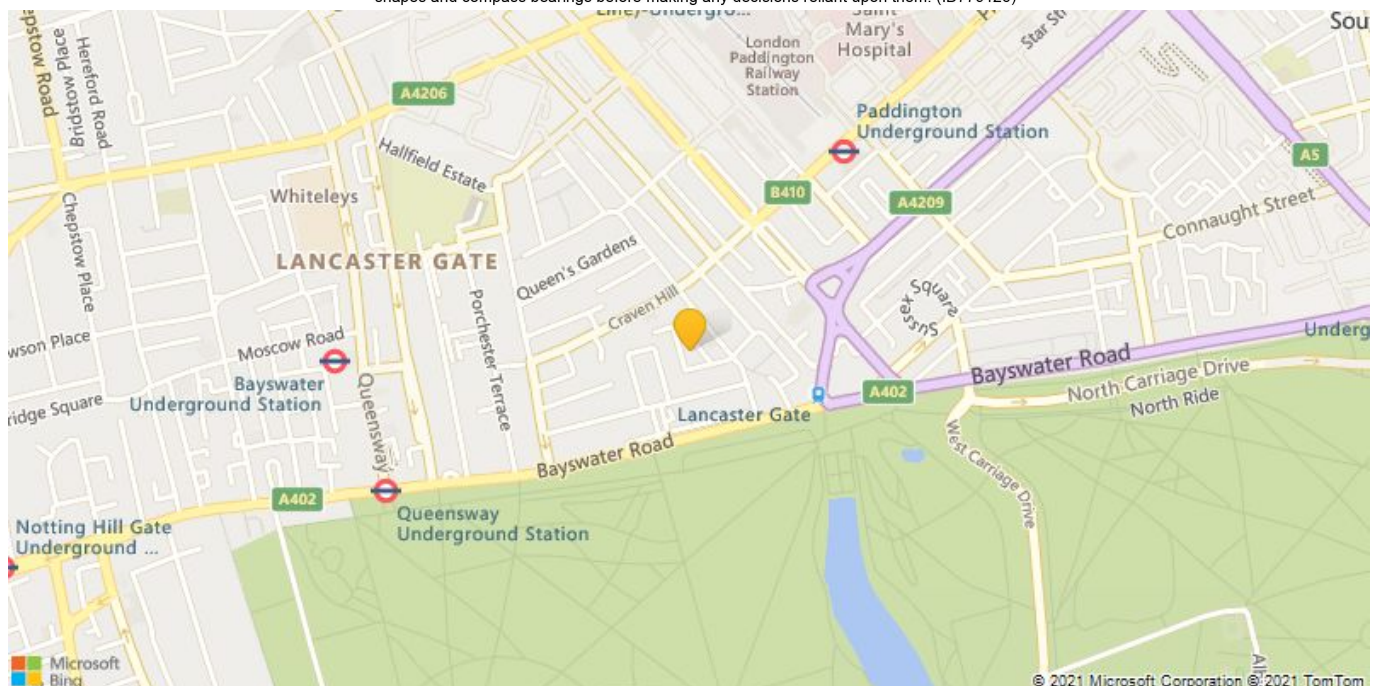


Basement



Ground Floor

This plan is for layout guidance only. Not drawn to scale unless stated. Windows and door openings are approximate. Whilst every care is taken in the preparation of this plan, please check all dimensions, shapes and compass bearings before making any decisions reliant upon them. (ID779126)



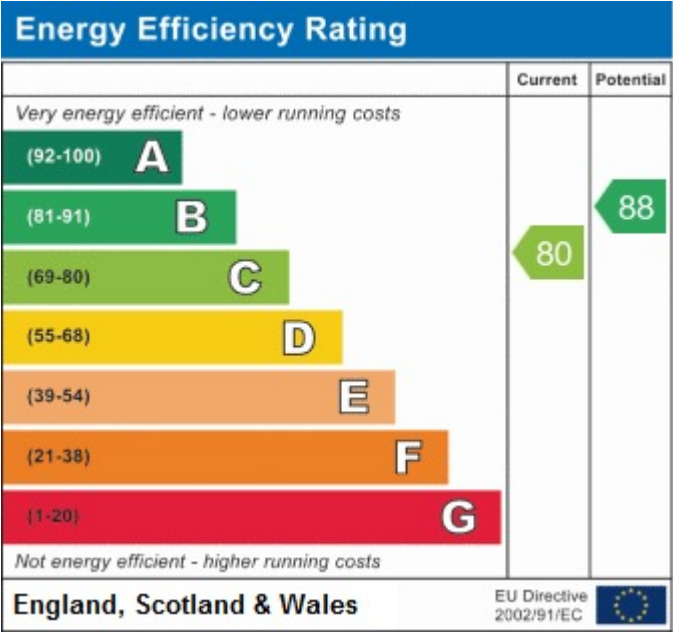
Call 020 7759 2199 to view this property, or visit www.vitaproperties.co.uk for more details

27 Northways Parade, College Crescent, London, NW3 5DN | T: 020 7759 2199 | E: enquiries@vitaproperties.co.uk

We make all efforts to ensure this information is accurate, but we can't guarantee it.

Lancaster Mews, London W2

Weekly Rental Of £1,250Monthly Rental Of £5,417



Call 020 7759 2199 to view this property, or visit www.vitaproperties.co.uk for more details