

# Finchley Road, Hampstead, London, NW3

£1,000,000



A large two bed (1459sq ft) flat with two exceptionally sized balconies. Situated on the second floor of this characteristic development this apartment comprises of a large living room, fully-equipped kitchen, two double bedrooms and two large balconies, the first of which is accessed from the living room and the second from both bedrooms. Some of the prominent features include wooden floors with underfloor heating, wine cooler, spot lighting, stone topped worktops and built in wardrobes in the master bedroom.

The Cascades is a secure development based on Finchley Road and well situated for the many local amenities.

- Bedrooms: 2
- Receptions : 1
- Bathrooms: 2
- Property Type: Flat
- Two Bed, Two Bath
- Second Floor with Lift Access
- Wooden Floors with Underfloor Heating
- Stone Topped Work Surfaces
- New Build Development
- Chain Free

Call 020 7759 2199 to view this property, or visit [www.vitaproperties.co.uk](http://www.vitaproperties.co.uk) for more details

27 Northways Parade, College Crescent, London, NW3 5DN | T: 020 7759 2199 | E: [enquiries@vitaproperties.co.uk](mailto:enquiries@vitaproperties.co.uk)

We make all efforts to ensure this information is accurate, but we can't guarantee it.

# Finchley Road, Hampstead, London, NW3

£1,000,000



Call 020 7759 2199 to view this property, or visit [www.vitaproperties.co.uk](http://www.vitaproperties.co.uk) for more details

27 Northways Parade, College Crescent, London, NW3 5DN | T: 020 7759 2199 | E: [enquiries@vitaproperties.co.uk](mailto:enquiries@vitaproperties.co.uk)

We make all efforts to ensure this information is accurate, but we can't guarantee it.

# Finchley Road, Hampstead, London, NW3

£1,000,000



Call 020 7759 2199 to view this property, or visit [www.vitaproperties.co.uk](http://www.vitaproperties.co.uk) for more details

27 Northways Parade, College Crescent, London, NW3 5DN | T: 020 7759 2199 | E: [enquiries@vitaproperties.co.uk](mailto:enquiries@vitaproperties.co.uk)

We make all efforts to ensure this information is accurate, but we can't guarantee it.

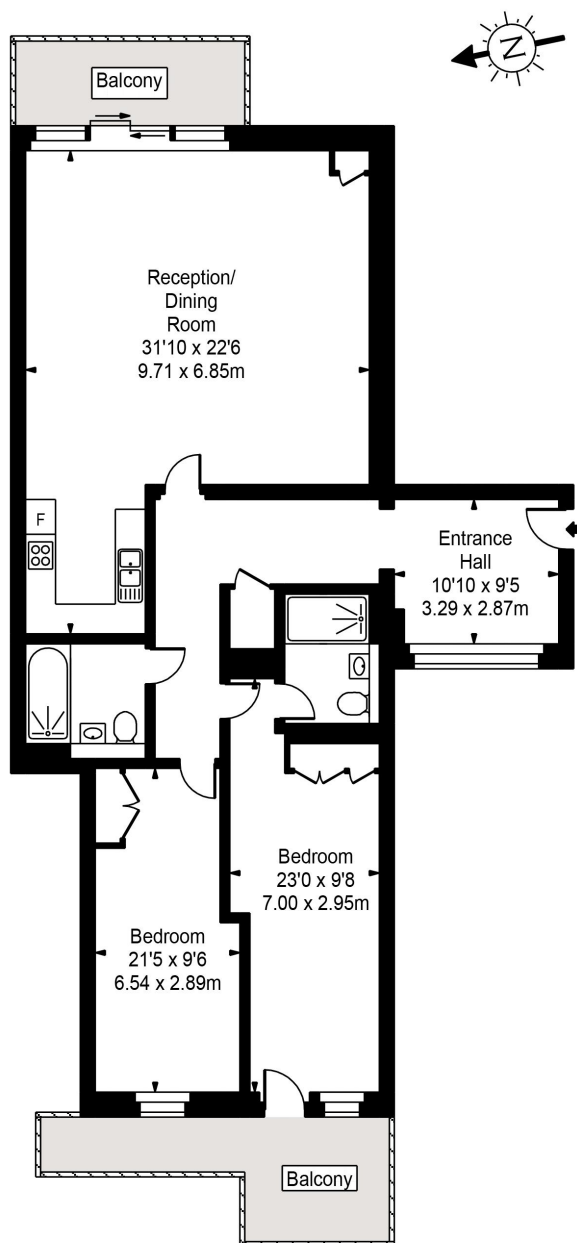


Finchley Road, Hampstead, London, NW3

£1,000,000



### The Cascades



Second Floor



Approx Gross Internal Area **1459 Sq Ft - 135.52 Sq M**

FOR ILLUSTRATIVE PURPOSES ONLY. NOT TO SCALE.

Whilst every attempt has been made to ensure the accuracy of the floorplan shown, all measurements, positioning, fixtures, fittings and any other data shown are an approximate interpretation for illustrative purposes only and are not to scale. No responsibility is taken for any error, omission, miss-statement or use of data shown. Floor plan by [www.bestangle.co.uk](http://www.bestangle.co.uk)

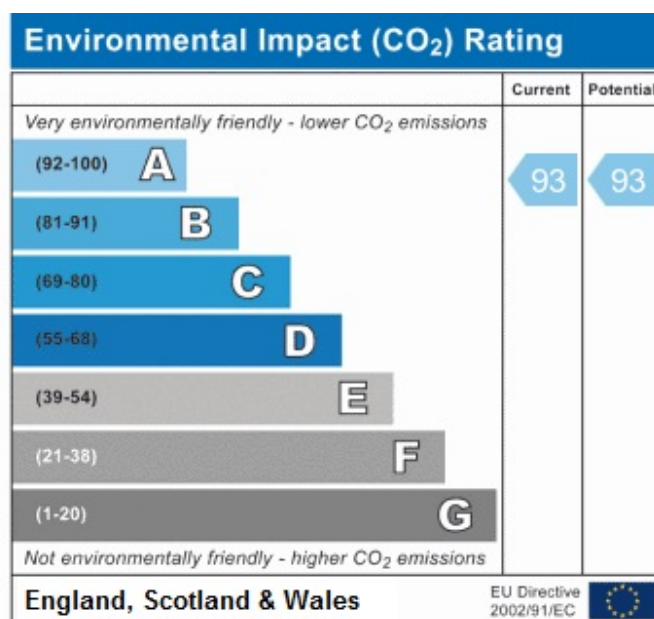
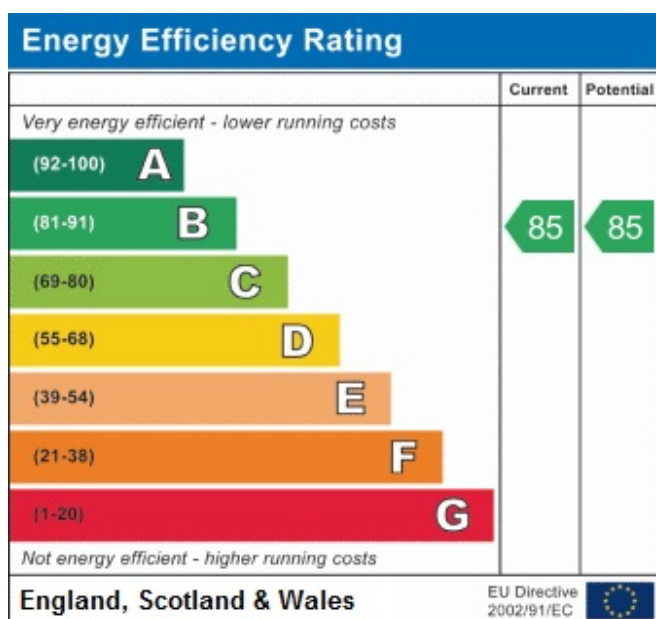
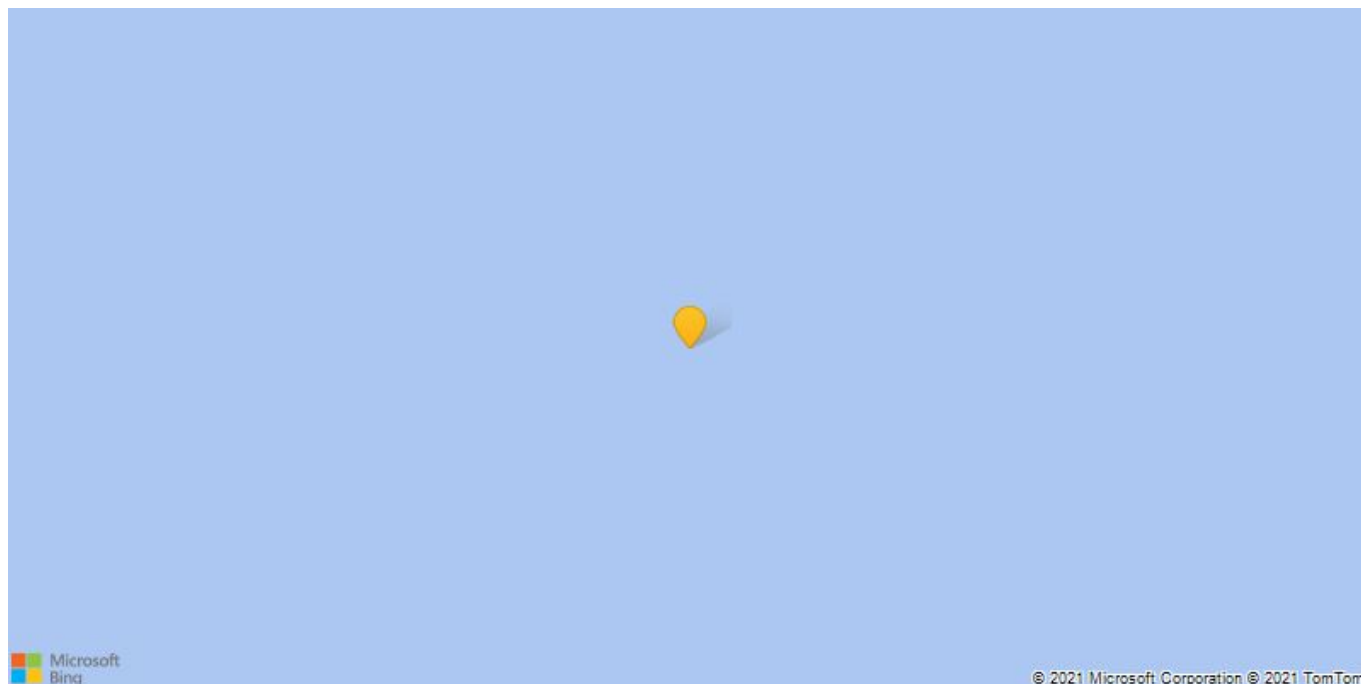
Call 020 7759 2199 to view this property, or visit [www.vitaproperties.co.uk](http://www.vitaproperties.co.uk) for more details

27 Northways Parade, College Crescent, London, NW3 5DN | T: 020 7759 2199 | E: [enquiries@vitaproperties.co.uk](mailto:enquiries@vitaproperties.co.uk)

We make all efforts to ensure this information is accurate, but we can't guarantee it.

# Finchley Road, Hampstead, London, NW3

£1,000,000



Call 020 7759 2199 to view this property, or visit [www.vitaproperties.co.uk](http://www.vitaproperties.co.uk) for more details

27 Northways Parade, College Crescent, London, NW3 5DN | T: 020 7759 2199 | E: [enquiries@vitaproperties.co.uk](mailto:enquiries@vitaproperties.co.uk)

We make all efforts to ensure this information is accurate, but we can't guarantee it.