

Portnall Road, Queens Park, London W9

£750,000



Beat the stamp duty holiday! An opportunity to purchase a brand new duplex apartment in Queens Park, NW6. Currently under going full refurbishment, this is a great opportunity to be part of the colour choice. The walk through is on the site and the floor plan spans 958 sq footage. Call us for more detail and to arrange a viewing.

- Kilburn Park (10 minutes/0.5 miles)
- Kilburn High Road (14 minutes/0.7 miles)
- Brondesbury Park (16 minutes/0.8 miles)
- Maida Vale (16 minutes/0.8 miles)
- Kensal Green (18 minutes/0.9 miles)

- Bedrooms: 2
- Receptions : 1
- Bathrooms: 2
- Property Type: Flat
- You can choose the colour!
- Newly constructed
- Moments to Queens Park
- Close to Maida Vale
- 2nd floor and 3rd (master with en suite)
- Completed before the stamp duty break

Call 020 7759 2199 to view this property, or visit www.vitaproperties.co.uk for more details

27 Northways Parade, College Crescent, London, NW3 5DN | T: 020 7759 2199 | E: enquiries@vitaproperties.co.uk

We make all efforts to ensure this information is accurate, but we can't guarantee it.

Portnall Road, Queens Park, London W9

£750,000



Call 020 7759 2199 to view this property, or visit www.vitaproperties.co.uk for more details

27 Northways Parade, College Crescent, London, NW3 5DN | T: 020 7759 2199 | E: enquiries@vitaproperties.co.uk

We make all efforts to ensure this information is accurate, but we can't guarantee it.

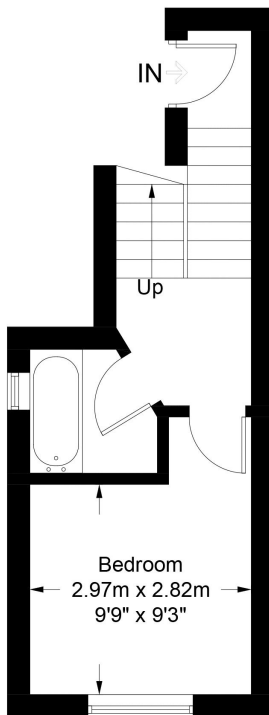
Portnall Road, Queens Park, London W9

£750,000

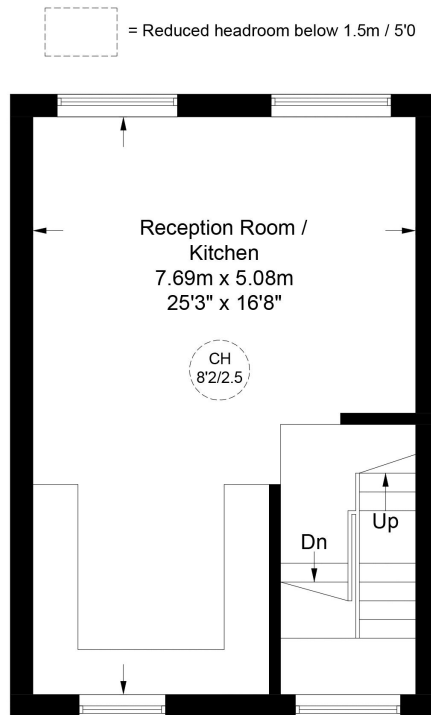


Portnall Road, W9

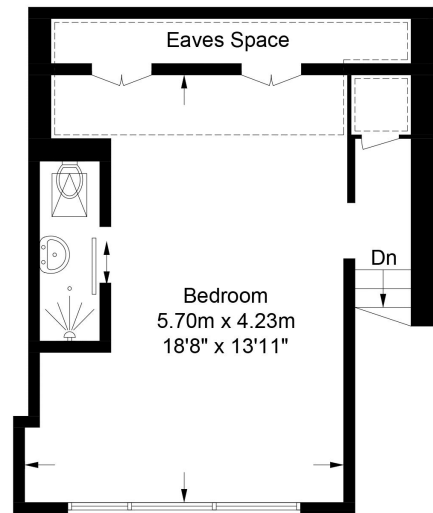
Approximate Gross Internal Area = 958.65 sq ft / 89.1 sq m
(Excluding Eaves Space)



First Floor

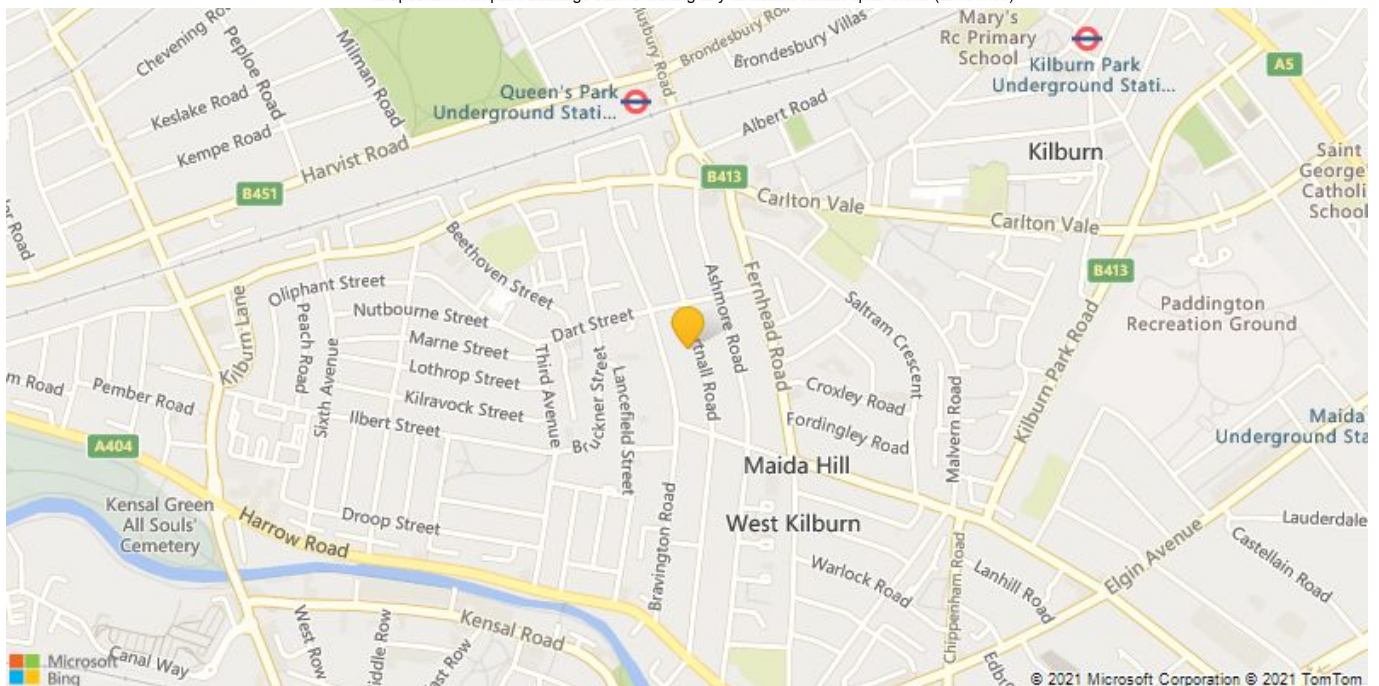


Second Floor



Third Floor

This plan is for layout guidance only. Not drawn to scale unless stated. Windows and door openings are approximate. Whilst every care is taken in the preparation of this plan, please check all dimensions, shapes and compass bearings before making any decisions reliant upon them. (ID761736)



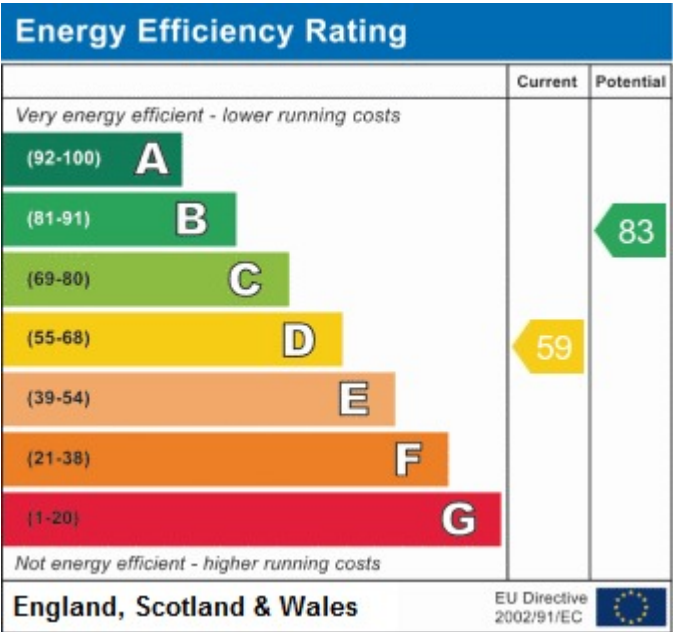
Call 020 7759 2199 to view this property, or visit www.vitaproperties.co.uk for more details

27 Northways Parade, College Crescent, London, NW3 5DN | T: 020 7759 2199 | E: enquiries@vitaproperties.co.uk

We make all efforts to ensure this information is accurate, but we can't guarantee it.

Portnall Road, Queens Park, London W9

£750,000



Call 020 7759 2199 to view this property, or visit www.vitaproperties.co.uk for more details

27 Northways Parade, College Crescent, London, NW3 5DN | T: 020 7759 2199 | E: enquiries@vitaproperties.co.uk
We make all efforts to ensure this information is accurate, but we can't guarantee it.