

Tudor House, Madoc Close, London NW2

£775,000



A fantastic two bedroom two bathroom first floor apartment just shy of 1100 sq ft.

This beautifully designed apartment, which offers well-proportioned accommodation, features a bright and spacious kitchen/dining/living room, principal bedroom with built in wardrobes and en-suite bathroom, second bedroom with fitted wardrobes and family bathroom.

The property further benefits from off street parking, gated security and underfloor heating throughout. Tudor House is superbly located within close proximity to Hampstead Heath, Hampstead village, along with the excellent transport link

- Bedrooms: 2
- Receptions : 1
- Bathrooms: 2
- Property Type: Flat
- Parking: Yes
- Modern throughout
- Gated Development
- Upgraded Spec
- Dressing Area

- Golders Green (12 minutes/0.6 miles)
- Cricklewood (16 minutes/0.8 miles)
- Hampstead (20 minutes/1 miles)
- Brent Cross (22 minutes/1.1 miles)
- West Hampstead (22 minutes/1.1 miles)

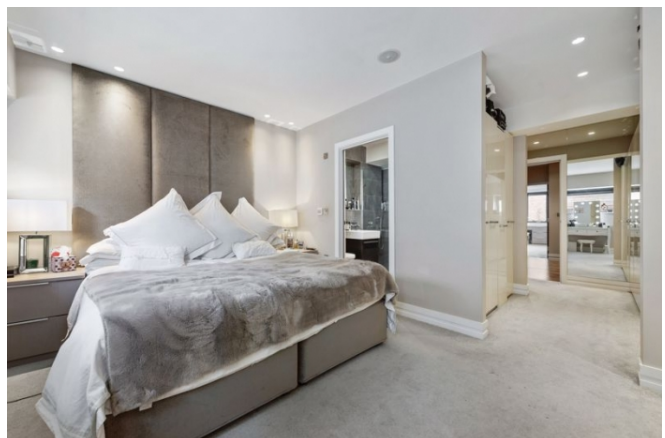
Call 020 7759 2199 to view this property, or visit www.vitaproperties.co.uk for more details

27 Northways Parade, College Crescent, London, NW3 5DN | T: 020 7759 2199 | E: enquiries@vitaproperties.co.uk

We make all efforts to ensure this information is accurate, but we can't guarantee it.

Tudor House, Madoc Close, London NW2

£775,000



Call 020 7759 2199 to view this property, or visit www.vitaproperties.co.uk for more details

27 Northways Parade, College Crescent, London, NW3 5DN | T: 020 7759 2199 | E: enquiries@vitaproperties.co.uk

We make all efforts to ensure this information is accurate, but we can't guarantee it.

Tudor House, Madoc Close, London NW2

£775,000



Call 020 7759 2199 to view this property, or visit www.vitaproperties.co.uk for more details

27 Northways Parade, College Crescent, London, NW3 5DN | T: 020 7759 2199 | E: enquiries@vitaproperties.co.uk

We make all efforts to ensure this information is accurate, but we can't guarantee it.

Tudor House, Madoc Close, London NW2

£775,000



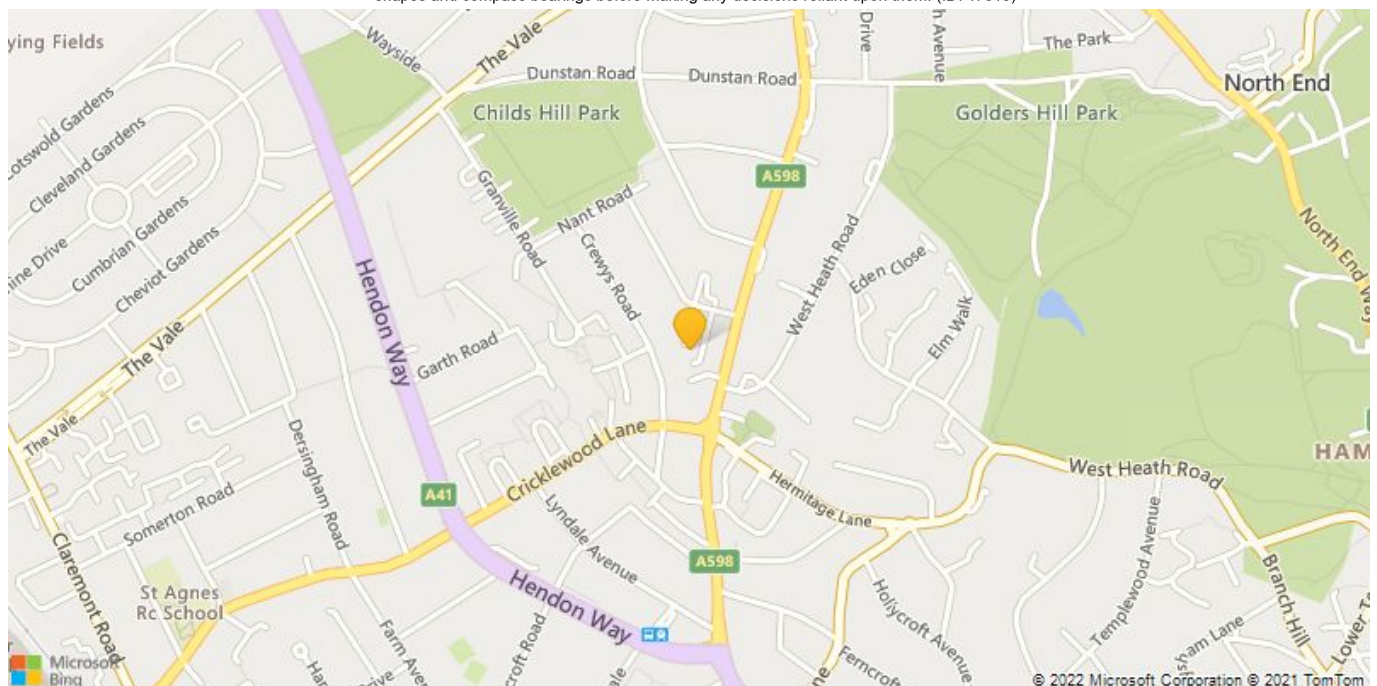
Madoc Close, NW2

Approximate Gross Internal Area = 1098 sq ft / 102.0 sq m



First Floor

This plan is for layout guidance only. Not drawn to scale unless stated. Windows and door openings are approximate. Whilst every care is taken in the preparation of this plan, please check all dimensions, shapes and compass bearings before making any decisions reliant upon them. (ID747510)



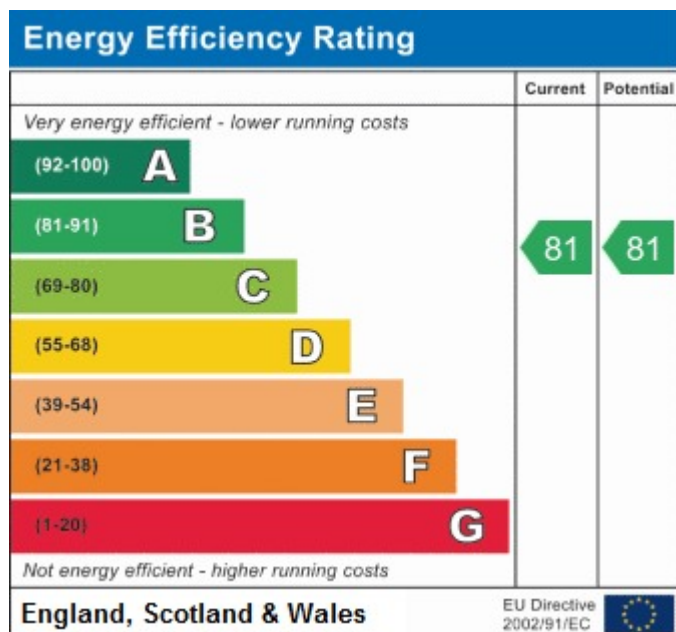
Call 020 7759 2199 to view this property, or visit www.vitaproperties.co.uk for more details

27 Northways Parade, College Crescent, London, NW3 5DN | T: 020 7759 2199 | E: enquiries@vitaproperties.co.uk

We make all efforts to ensure this information is accurate, but we can't guarantee it.

Tudor House, Madoc Close, London NW2

£775,000



Call 020 7759 2199 to view this property, or visit www.vitaproperties.co.uk for more details

27 Northways Parade, College Crescent, London, NW3 5DN | T: 020 7759 2199 | E: enquiries@vitaproperties.co.uk

We make all efforts to ensure this information is accurate, but we can't guarantee it.