

Fitzjohns Avenue, Hampstead, London NW3

Weekly Rental Of £875 Monthly Rental Of £3,792



Presenting a selection of one, two, three and four bed apartments, set within the excited new period conversion set on the beautiful, tree-lined street Fitzjohns Avenue, NW8.

This brand new conversion boasts an incredible finish to each property, top-notch fixtures and fittings and many offering private terraces/ balconies. Each property boast wood floors throughout, large windows, integrated kitchen appliances and fully-tiled bathrooms. All apartments are offered on either a furnished or unfurnished basis, and all furnishings are of a great standard.

Based within walking distance to the many amenities of Hampstead High Street, Finchley Road and with excellent transport links via the Jubilee line

- Finchley Road & Frognal (6 minutes/0.3 miles)
- Finchley Road (8 minutes/0.4 miles)
- Hampstead (8 minutes/0.4 miles)
- Belsize Park (10 minutes/0.5 miles)
- Hampstead Heath (10 minutes/0.5 miles)

- Bedrooms: 2
- Receptions : 1
- Bathrooms: 2
- Property Type: Flat
- Garden: Yes
- Second Floor with Lift Access
- High Spec
- Moments to Hampstead, Belsize Village and Swiss Cottage
- Available December 2021
- Offered on a Furnished or Unfurnished basis

Call 020 7759 2199 to view this property, or visit www.vitaproperties.co.uk for more details

27 Northways Parade, College Crescent, London, NW3 5DN | T: 020 7759 2199 | E: enquiries@vitaproperties.co.uk

We make all efforts to ensure this information is accurate, but we can't guarantee it.

Fitzjohns Avenue, Hampstead, London NW3

Weekly Rental Of £875 Monthly Rental Of £3,792



Call 020 7759 2199 to view this property, or visit www.vitaproperties.co.uk for more details

27 Northways Parade, College Crescent, London, NW3 5DN | T: 020 7759 2199 | E: enquiries@vitaproperties.co.uk

We make all efforts to ensure this information is accurate, but we can't guarantee it.

Fitzjohns Avenue, Hampstead, London NW3

Weekly Rental Of £875 Monthly Rental Of £3,792



Call 020 7759 2199 to view this property, or visit www.vitaproperties.co.uk for more details

27 Northways Parade, College Crescent, London, NW3 5DN | T: 020 7759 2199 | E: enquiries@vitaproperties.co.uk

We make all efforts to ensure this information is accurate, but we can't guarantee it.

Fitzjohns Avenue, Hampstead, London NW3

Weekly Rental Of £875 Monthly Rental Of £3,792



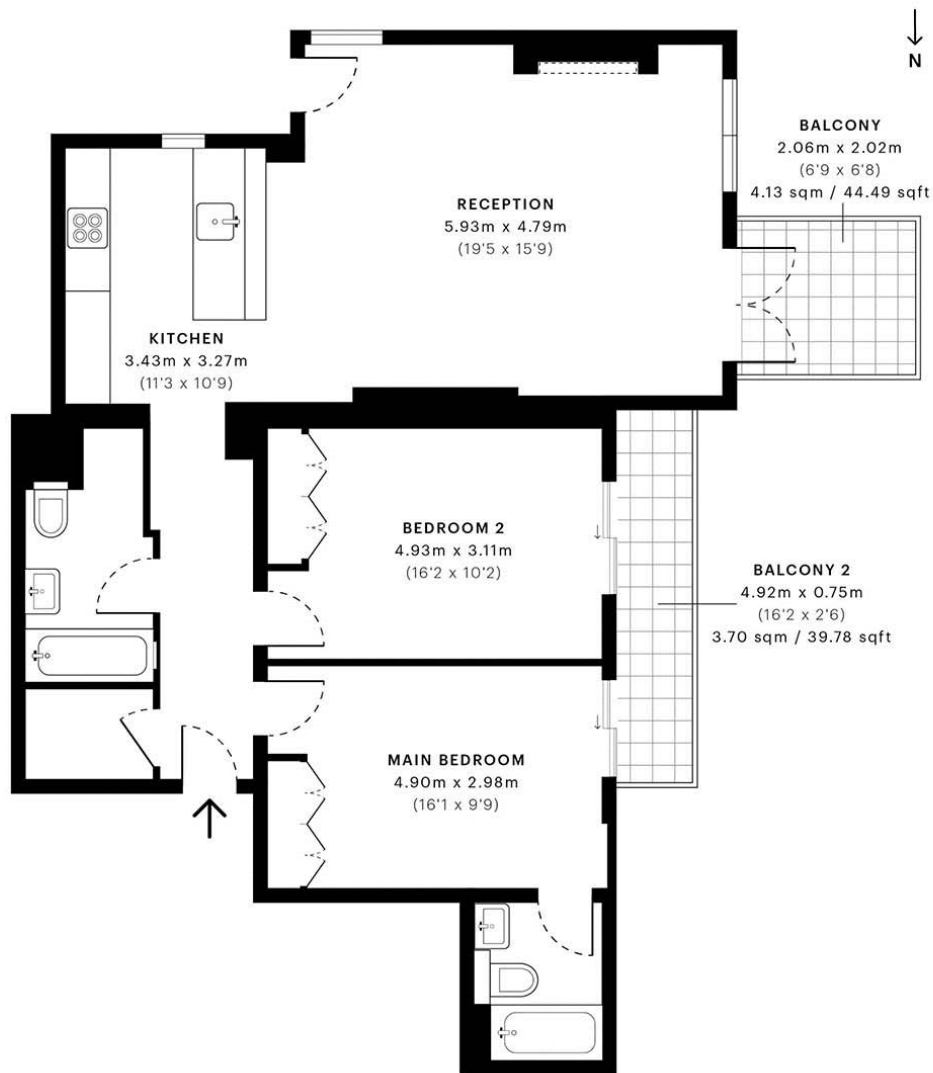
SD Investments & Management

Fitzjohns Avenue, NW3

CAPTURE DATE 04/02/2021 LASER SCAN POINTS 5,061,455

GROSS INTERNAL AREA

90.65 sqm / 975.75 sqft



— Second Floor

GROSS INTERNAL AREA (GIA)
The footprint of the property
90.65 sqm / 975.75 sqft

NET INTERNAL AREA (NIA)
Excludes walls and external features
Includes washrooms, restricted head height
82.97 sqm / 893.08 sqft

EXTERNAL STRUCTURAL FEATURES
Balconies, terraces, verandas etc.
7.83 sqm / 84.28 sqft

RESTRICTED HEAD HEIGHT
Limited use area under 1.5 m
0.16 sqm / 1.72 sqft



Spec Verified floor plans are produced in accordance with Royal Institution of Chartered Surveyors' Property Measurement Standards. Plots and gardens are illustrative only and excluded from all area calculations. Due to rounding, numbers may not add up precisely. All measurements shown for the individual room lengths and widths are the maximum points of measurements captured in the scan.

IPMS 3B RESIDENTIAL 98.01 sqm / 1054.97 sqft
IPMS 3C RESIDENTIAL 91.72 sqm / 987.27 sqft

SPEC ID 60180b8ba4b8610db787c178

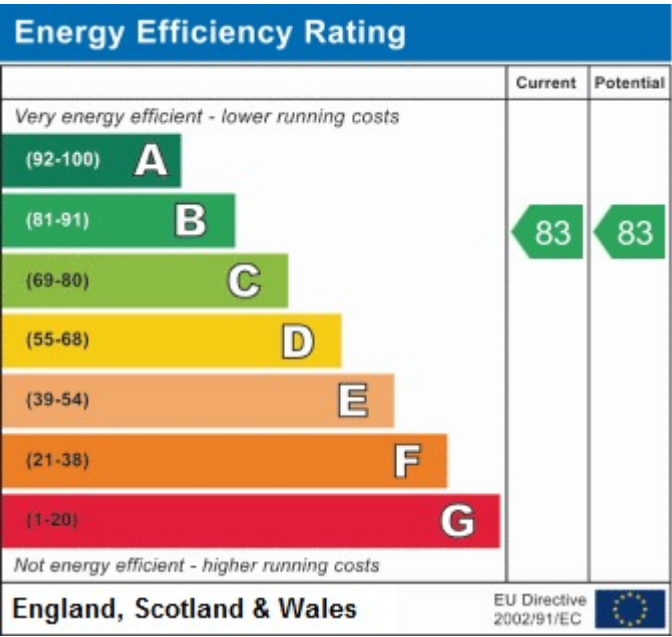
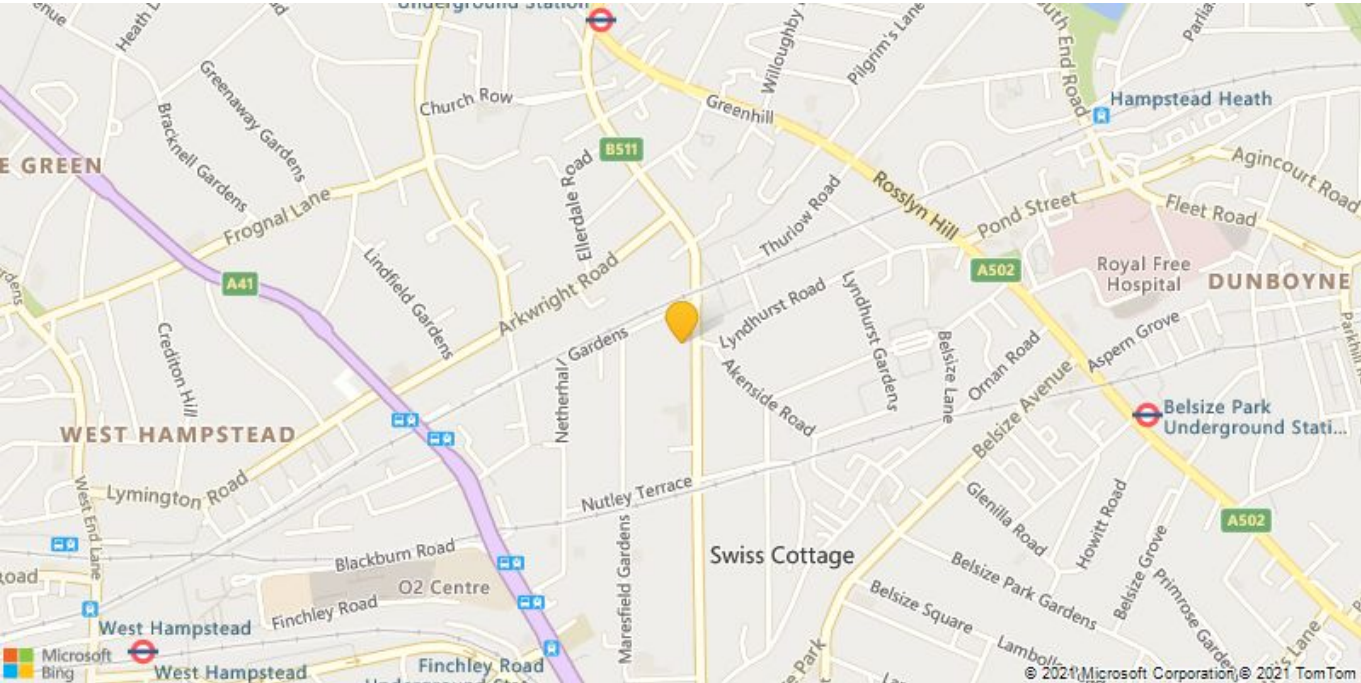
Call 020 7759 2199 to view this property, or visit www.vitaproperties.co.uk for more details

27 Northways Parade, College Crescent, London, NW3 5DN | T: 020 7759 2199 | E: enquiries@vitaproperties.co.uk

We make all efforts to ensure this information is accurate, but we can't guarantee it.

Fitzjohns Avenue, Hampstead, London NW3

Weekly Rental Of £875Monthly Rental Of £3,792



Call 020 7759 2199 to view this property, or visit www.vitaproperties.co.uk for more details