

Eyre Court, Finchley Road, St Johns Wood, London NW8

Weekly Rental Of £1,000 Monthly Rental Of £4,333



We are delighted to launch this recently refurbished three bedroom, two bathroom apartment.

The property benefits from wooden flooring, an abundance of natural light, spacious double reception room, eat-in kitchen, first come first serve parking & 24-hour concierge. In addition, heating & hot water bills are included in the rent. Furthermore, Eyre Court is perfectly located a short walk from St John's Wood High Street & St John's Wood Underground Station. Offered furnished or unfurnished. Available immediately.

- St Johns Wood (2 minutes/0.1 miles)
- South Hampstead (10 minutes/0.5 miles)
- Swiss Cottage (12 minutes/0.6 miles)
- Maida Vale (12 minutes/0.6 miles)
- Kilburn High Road (14 minutes/0.7 miles)

- Bedrooms: 3
- Receptions : 1
- Bathrooms: 2
- Property Type: Flat
- Parking: Yes
- Includes Heating & Hot Water Bills
- 24 Hour Concierge
- Available immediately

Call 020 7759 2199 to view this property, or visit www.vitaproperties.co.uk for more details

27 Northways Parade, College Crescent, London, NW3 5DN | T: 020 7759 2199 | E: enquiries@vitaproperties.co.uk

We make all efforts to ensure this information is accurate, but we can't guarantee it.

Eyre Court, Finchley Road, St Johns Wood, London NW8

Weekly Rental Of £1,000 Monthly Rental Of £4,333



Call 020 7759 2199 to view this property, or visit www.vitaproperties.co.uk for more details

27 Northways Parade, College Crescent, London, NW3 5DN | T: 020 7759 2199 | E: enquiries@vitaproperties.co.uk

We make all efforts to ensure this information is accurate, but we can't guarantee it.

Eyre Court, Finchley Road, St Johns Wood, London NW8

Weekly Rental Of £1,000 Monthly Rental Of £4,333



Call 020 7759 2199 to view this property, or visit www.vitaproperties.co.uk for more details

27 Northways Parade, College Crescent, London, NW3 5DN | T: 020 7759 2199 | E: enquiries@vitaproperties.co.uk

We make all efforts to ensure this information is accurate, but we can't guarantee it.

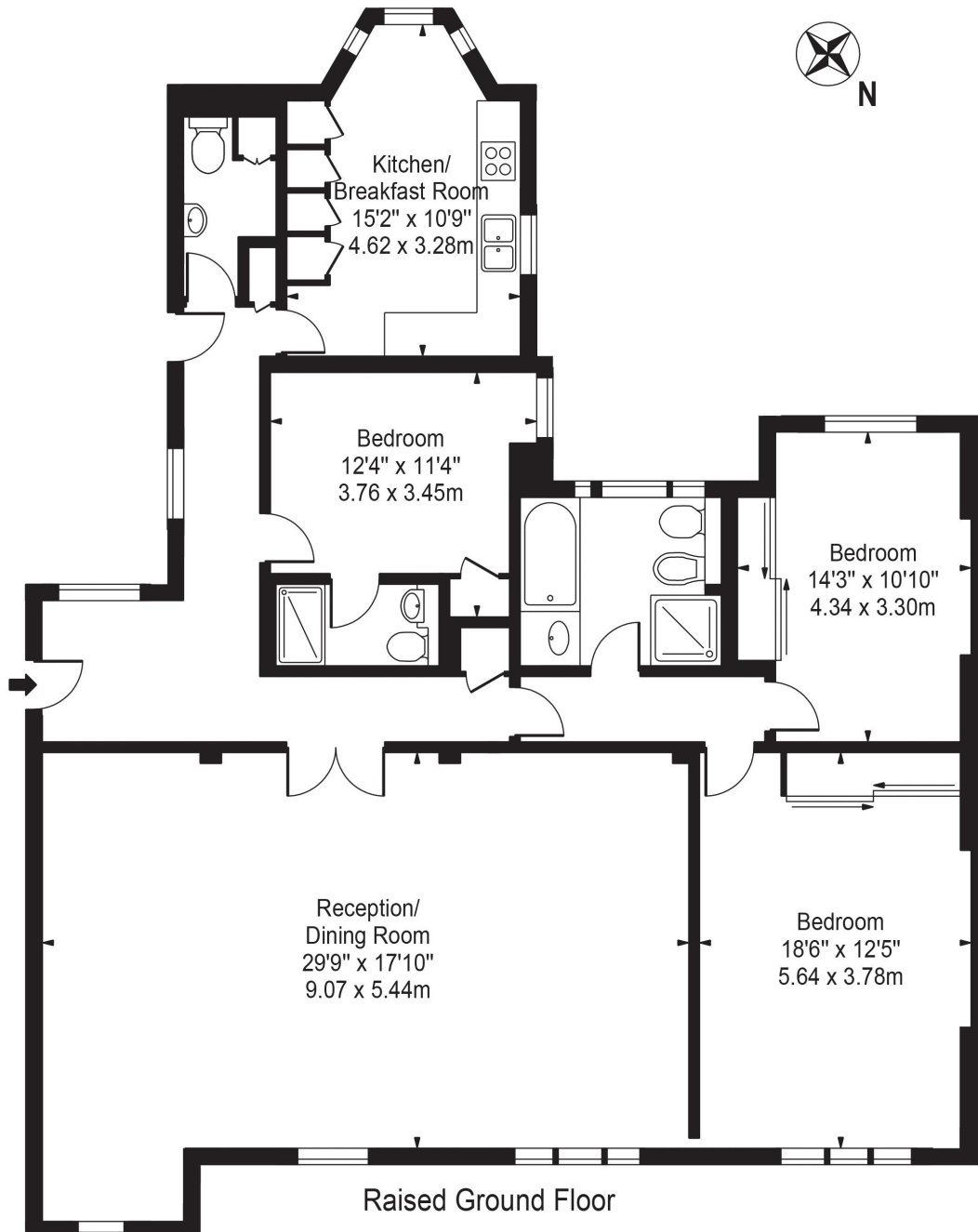
Eyre Court, Finchley Road, St Johns
Wood, London NW8

Weekly Rental Of £1,000 Monthly Rental Of £4,333



Eyre Court

Approx. Gross Internal Area 1639 Sq Ft - 152.27 Sq M



For Illustration Purposes Only - Not To Scale

This floor plan should be used as a general outline for guidance only and does not constitute in whole or in part an offer or contract.
Any intending purchaser or lessee should satisfy themselves by inspection, searches, enquiries and full survey as to the correctness of each statement.
Any areas, measurements or distances quoted are approximate and should not be used to value a property or be the basis of any sale or let.

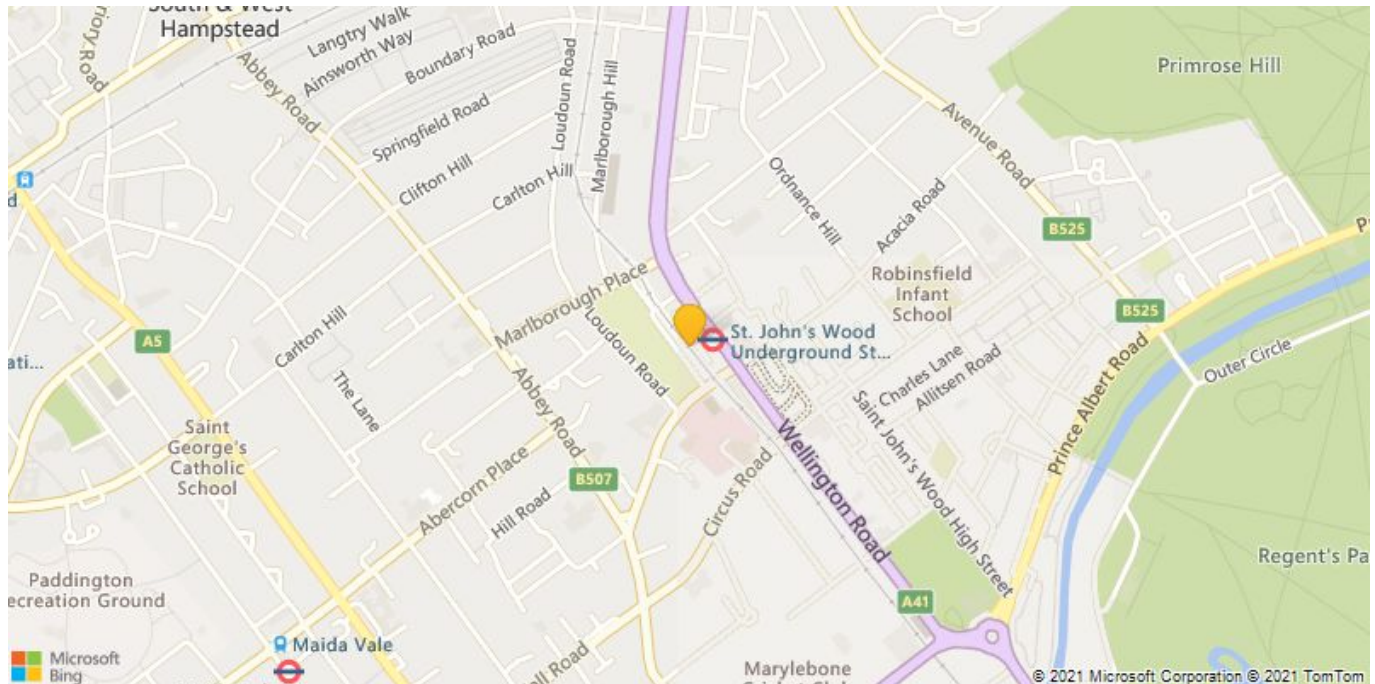
Call 020 7759 2199 to view this property, or visit www.vitaproperties.co.uk for more details

27 Northways Parade, College Crescent, London, NW3 5DN | T: 020 7759 2199 | E: enquiries@vitaproperties.co.uk

We make all efforts to ensure this information is accurate, but we can't guarantee it.

Eyre Court, Finchley Road, St Johns Wood, London NW8

Weekly Rental Of £1,000 Monthly Rental Of £4,333



Call 020 7759 2199 to view this property, or visit www.vitaproperties.co.uk for more details

27 Northways Parade, College Crescent, London, NW3 5DN | T: 020 7759 2199 | E: enquiries@vitaproperties.co.uk

We make all efforts to ensure this information is accurate, but we can't guarantee it.