

Murray Street, Camden, London, NW1

Weekly Rental Of £425 Monthly Rental Of £1,842



Available Now - A spacious two double bed apartment situated on the ground floor of a modern apartment building, featuring a clean, neutral décor, wooden floors throughout and large windows for plenty of natural light. Murray Street is located minutes from the local amenities of trendy Camden and Kentish Town. The flat is immaculately presented throughout, with a spacious master bedroom featuring large fitted wardrobes, en-suite bathroom with a walk-in shower, second double bedroom, bright reception room and a contemporary kitchen with fully integrated appliances.

- Camden Town (10 minutes/0.5 miles)
- Kentish Town (12 minutes/0.6 miles)
- Kentish Town West (12 minutes/0.6 miles)
- Mornington Crescent (14 minutes/0.7 miles)
- Chalk Farm (18 minutes/0.9 miles)

- Bedrooms: 2
- Receptions : 1
- Bathrooms: 2
- Property Type: Flat
- Two Bed, Two Bath
- Bright & Modern
- Open-Plan
- Located moments to the local amenities of Camden and Kentish Town
- Great Transport Links
- Available Now!

Call 020 7759 2199 to view this property, or visit www.vitaproperties.co.uk for more details

27 Northways Parade, College Crescent, London, NW3 5DN | T: 020 7759 2199 | E: enquiries@vitaproperties.co.uk

We make all efforts to ensure this information is accurate, but we can't guarantee it.

Murray Street, Camden, London, NW1

Weekly Rental Of £425 Monthly Rental Of £1,842



Call 020 7759 2199 to view this property, or visit www.vitaproperties.co.uk for more details

27 Northways Parade, College Crescent, London, NW3 5DN | T: 020 7759 2199 | E: enquiries@vitaproperties.co.uk

We make all efforts to ensure this information is accurate, but we can't guarantee it.

Murray Street, Camden, London, NW1

Weekly Rental Of £425 Monthly Rental Of £1,842



Call 020 7759 2199 to view this property, or visit www.vitaproperties.co.uk for more details

27 Northways Parade, College Crescent, London, NW3 5DN | T: 020 7759 2199 | E: enquiries@vitaproperties.co.uk

We make all efforts to ensure this information is accurate, but we can't guarantee it.

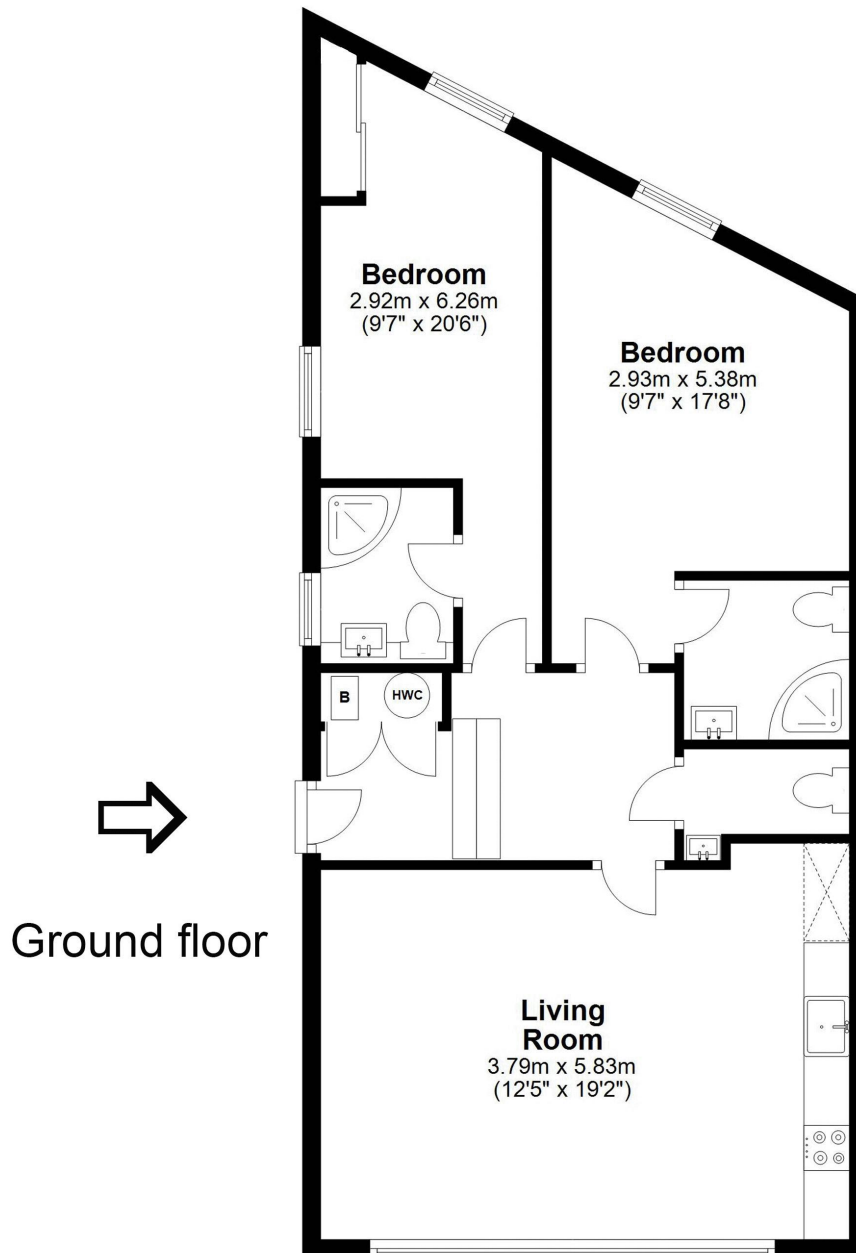
Murray Street, Camden, London, NW1

Weekly Rental Of £425 Monthly Rental Of £1,842



Flat 1 NW1.

Approx Gross Internal Area 67 Sq M - 720 Sq Ft



Whilst every attempt has been made to ensure the accuracy of the floor plan contained here, measurements are approximate and no responsibility is taken for any error, omission, or mis-statement. The plan is for illustrative purposes only and should be used as such by any prospective purchaser.

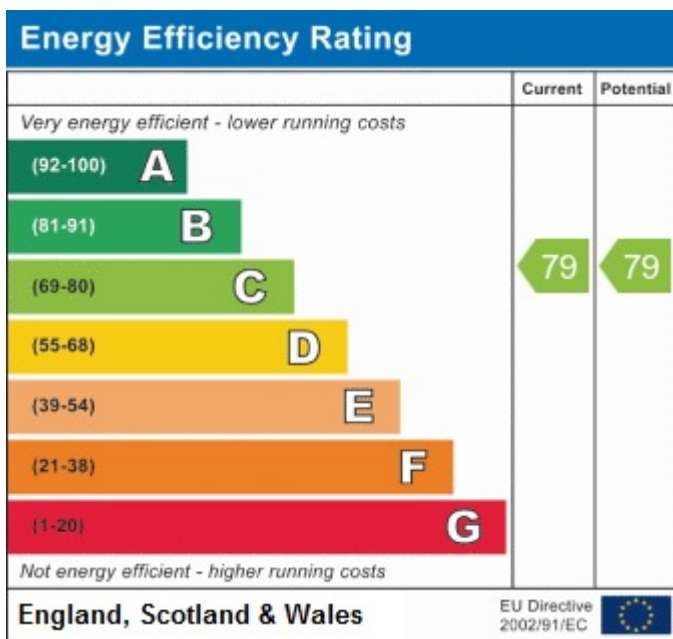
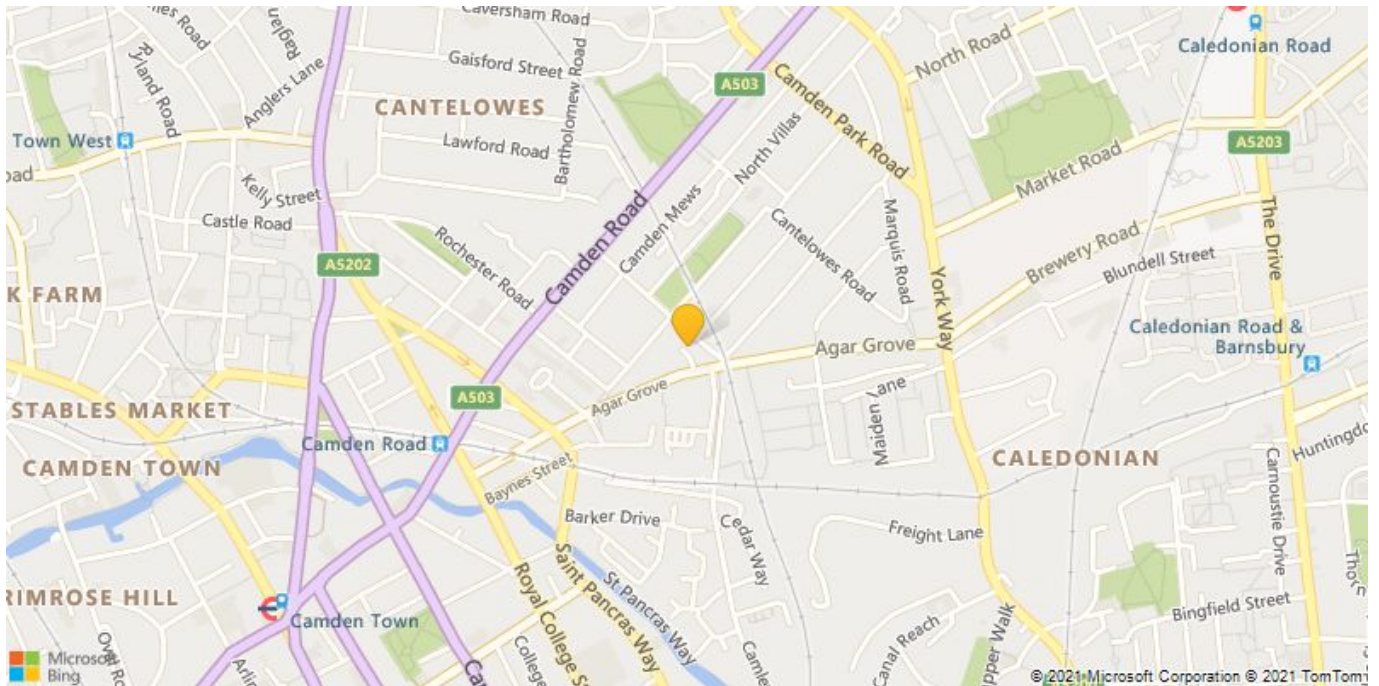
Call 020 7759 2199 to view this property, or visit www.vitaproperties.co.uk for more details

27 Northways Parade, College Crescent, London, NW3 5DN | T: 020 7759 2199 | E: enquiries@vitaproperties.co.uk

We make all efforts to ensure this information is accurate, but we can't guarantee it.

Murray Street, Camden, London, NW1

Weekly Rental Of £425 Monthly Rental Of £1,842



Call 020 7759 2199 to view this property, or visit www.vitaproperties.co.uk for more details

27 Northways Parade, College Crescent, London, NW3 5DN | T: 020 7759 2199 | E: enquiries@vitaproperties.co.uk
 We make all efforts to ensure this information is accurate, but we can't guarantee it.