

# Boydell Court, St. Johns Wood Park, London, NW8

Weekly Rental Of £1,200 Monthly Rental Of £5,200



- 3 bedrooms, 3 bathrooms, 1 reception
- Eighth floor penthouse
- Brand newly refurbished
- 1,118 sq. ft.
- Furnished

- Fully air conditioned
- Bespoke interior design
- Smoke alarms everywhere
- Satellite (ready for sky, sky plus and hotbird)
- Double glazed windows
- German kitchen with stone Italian worktops
- Bosch appliances, separate washer and dryer, full fridge, separate freezer
- Spacious master bedroom
- Fitted wardrobes
- Wooden flooring in the bedrooms
- Beautiful white matte tiles in kitchen and in the reception
- LED efficient lights
- Dimmable switches
- Fully tiled bathrooms with multi-jet power showers

- Bedrooms: 3
- Receptions : 1
- Bathrooms: 3
- Property Type: Flat
- 3 Bedrooms
- 3 Bathrooms
- Newly Refurbished
- Available Furnished
- Penthouse
- Managed
- Complimentary X-Mas Hamper  
To All Move In's Before 2020!

Call 020 7759 2199 to view this property, or visit [www.vitaproperties.co.uk](http://www.vitaproperties.co.uk) for more details

27 Northways Parade, College Crescent, London, NW3 5DN | T: 020 7759 2199 | E: [enquiries@vitaproperties.co.uk](mailto:enquiries@vitaproperties.co.uk)

We make all efforts to ensure this information is accurate, but we can't guarantee it.

# Boydell Court, St. Johns Wood Park, London, NW8

Weekly Rental Of £1,200 Monthly Rental Of £5,200



- Spectacular views
- Alarm and video entry-phone
- 24 hour porterage within a gated development
- Lockers, car parking space and garages available to rent
  - Swiss Cottage (4 minutes/0.2 miles)
  - South Hampstead (4 minutes/0.2 miles)
  - Finchley Road (10 minutes/0.5 miles)
  - St Johns Wood (10 minutes/0.5 miles)
  - Finchley Road & Frognal (14 minutes/0.7 miles)

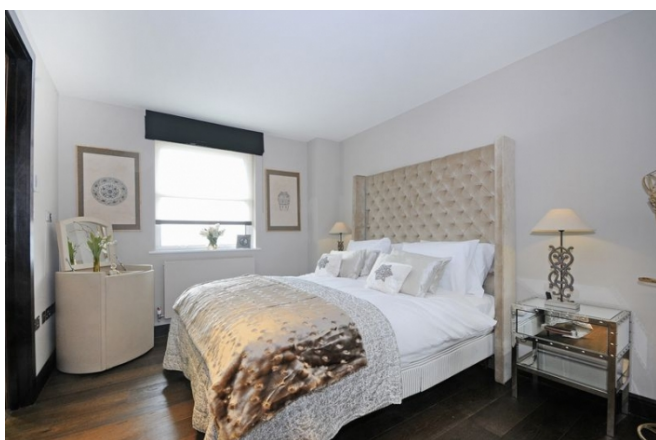
Call 020 7759 2199 to view this property, or visit [www.vitaproperties.co.uk](http://www.vitaproperties.co.uk) for more details

27 Northways Parade, College Crescent, London, NW3 5DN | T: 020 7759 2199 | E: [enquiries@vitaproperties.co.uk](mailto:enquiries@vitaproperties.co.uk)

We make all efforts to ensure this information is accurate, but we can't guarantee it.

# Boydell Court, St. Johns Wood Park, London, NW8

Weekly Rental Of £1,200 Monthly Rental Of £5,200



Call 020 7759 2199 to view this property, or visit [www.vitaproperties.co.uk](http://www.vitaproperties.co.uk) for more details

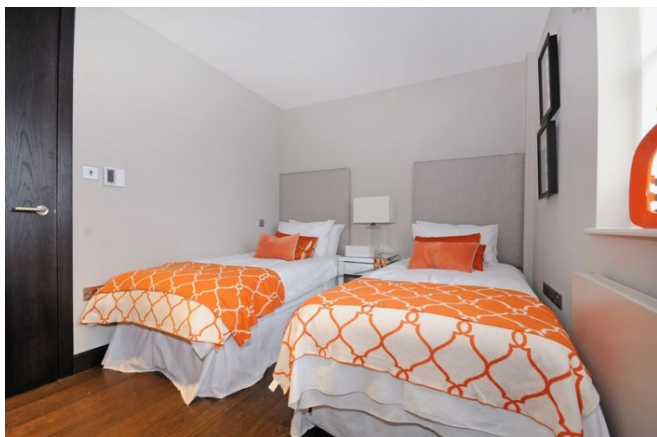
27 Northways Parade, College Crescent, London, NW3 5DN | T: 020 7759 2199 | E: [enquiries@vitaproperties.co.uk](mailto:enquiries@vitaproperties.co.uk)

We make all efforts to ensure this information is accurate, but we can't guarantee it.



# Boydell Court, St. Johns Wood Park, London, NW8

Weekly Rental Of £1,200 Monthly Rental Of £5,200



Call 020 7759 2199 to view this property, or visit [www.vitaproperties.co.uk](http://www.vitaproperties.co.uk) for more details

27 Northways Parade, College Crescent, London, NW3 5DN | T: 020 7759 2199 | E: [enquiries@vitaproperties.co.uk](mailto:enquiries@vitaproperties.co.uk)

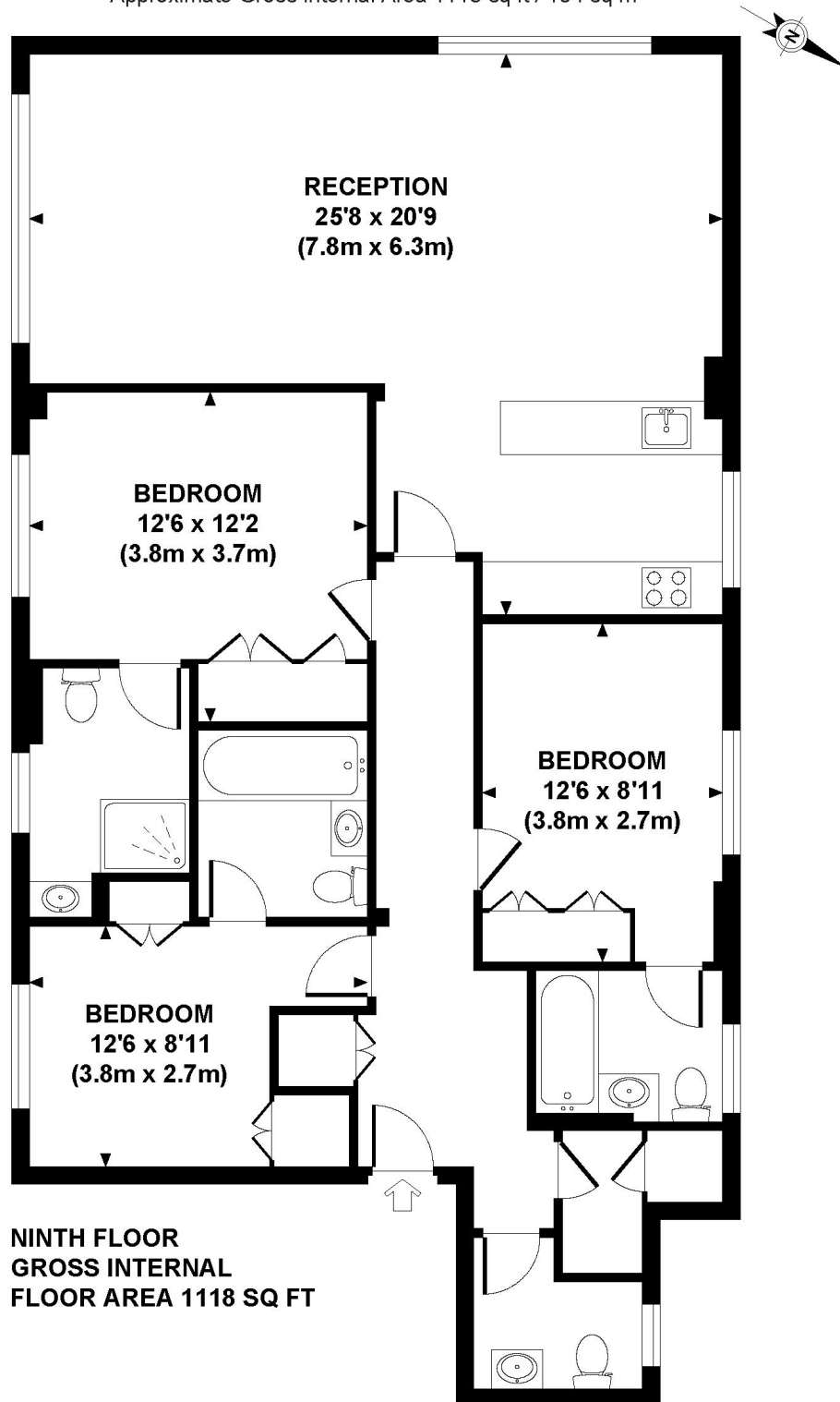
We make all efforts to ensure this information is accurate, but we can't guarantee it.

# Boydell Court, St. Johns Wood Park, London, NW8

Weekly Rental Of £1,200 Monthly Rental Of £5,200



## 1008 BOYDELL COURT Approximate Gross Internal Area 1118 sq ft / 104 sq m



Although every attempt has been made to ensure accuracy, all measurements are approximate.  
The floor plan's for illustrative purposes only and not to scale. Measured in accordance to RICS standards.  
DE-PHOTOGRAPHY.NET

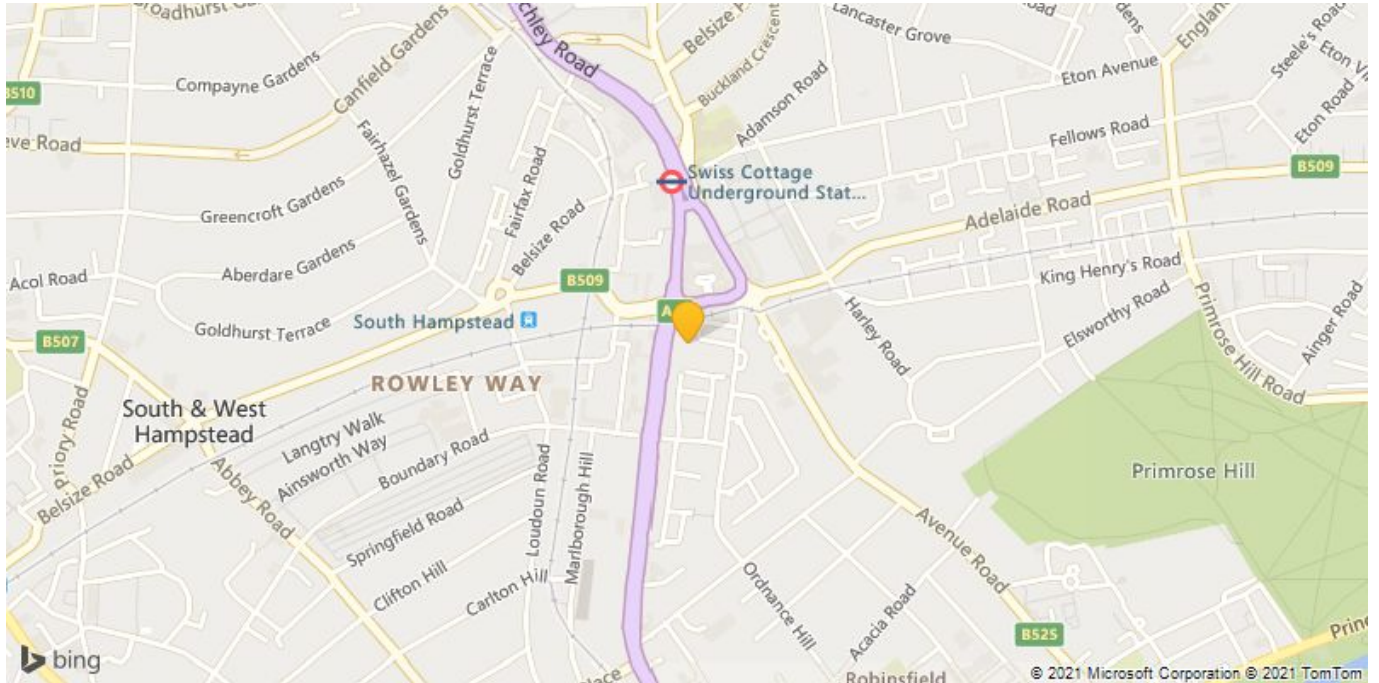
Call 020 7759 2199 to view this property, or visit [www.vitaproperties.co.uk](http://www.vitaproperties.co.uk) for more details

27 Northways Parade, College Crescent, London, NW3 5DN | T: 020 7759 2199 | E: [enquiries@vitaproperties.co.uk](mailto:enquiries@vitaproperties.co.uk)

We make all efforts to ensure this information is accurate, but we can't guarantee it.

# Boydell Court, St. Johns Wood Park, London, NW8

Weekly Rental Of £1,200 Monthly Rental Of £5,200



Call 020 7759 2199 to view this property, or visit [www.vitaproperties.co.uk](http://www.vitaproperties.co.uk) for more details

27 Northways Parade, College Crescent, London, NW3 5DN | T: 020 7759 2199 | E: [enquiries@vitaproperties.co.uk](mailto:enquiries@vitaproperties.co.uk)

We make all efforts to ensure this information is accurate, but we can't guarantee it.