

# Haverstock Hill, Belsize Park, London NW3

£2,250,000



Presenting this incredible three bed apartments, comprising of an impressive APPROX 1641 sq ft of luxuriously appointed living space. Set on Haverstock Hill, in the heart of the idyllic Belsize Park, this apartment is based within a 2 minute walk to Belsize Park Station and surrounded by an abundance of boutique shops, café's and other amenities.

- Bedrooms: 3
- Receptions : 1
- Bathrooms: 3
- Property Type: Flat
- OFF MARKET

Comprising of a large open-plan living room/ kitchen, with light-flooding floor bi-folding doors leading through to a sizeable private garden. The sleek, modern kitchen offers fully fitted, top-quality appliances, as well as large island counter, a large master bedroom with contemporary open-plan bathtub, with separate shower space. Two further double bedrooms with one boasting an en-suite and direct access to the garden and finally a separate shower room.

- Belsize Park (2 minutes/0.1 miles)
- Hampstead Heath (8 minutes/0.4 miles)
- Chalk Farm (12 minutes/0.6 miles)
- Gospel Oak (14 minutes/0.7 miles)
- Swiss Cottage (14 minutes/0.7 miles)

Call 020 7759 2199 to view this property, or visit [www.vitaproperties.co.uk](http://www.vitaproperties.co.uk) for more details

27 Northways Parade, College Crescent, London, NW3 5DN | T: 020 7759 2199 | E: [enquiries@vitaproperties.co.uk](mailto:enquiries@vitaproperties.co.uk)

We make all efforts to ensure this information is accurate, but we can't guarantee it.

# Haverstock Hill, Belsize Park, London NW3

£2,250,000



Call 020 7759 2199 to view this property, or visit [www.vitaproperties.co.uk](http://www.vitaproperties.co.uk) for more details

27 Northways Parade, College Crescent, London, NW3 5DN | T: 020 7759 2199 | E: [enquiries@vitaproperties.co.uk](mailto:enquiries@vitaproperties.co.uk)

We make all efforts to ensure this information is accurate, but we can't guarantee it.



# Haverstock Hill, Belsize Park, London NW3

£2,250,000



Call 020 7759 2199 to view this property, or visit [www.vitaproperties.co.uk](http://www.vitaproperties.co.uk) for more details

27 Northways Parade, College Crescent, London, NW3 5DN | T: 020 7759 2199 | E: [enquiries@vitaproperties.co.uk](mailto:enquiries@vitaproperties.co.uk)

We make all efforts to ensure this information is accurate, but we can't guarantee it.

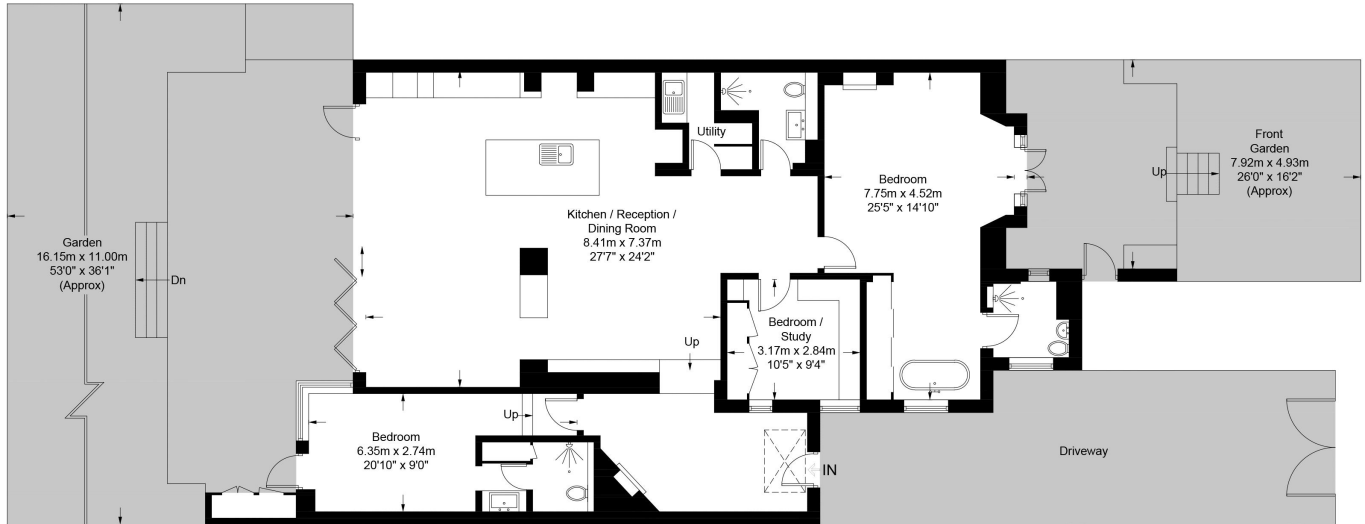
# Haverstock Hill, Belsize Park, London NW3

£2,250,000



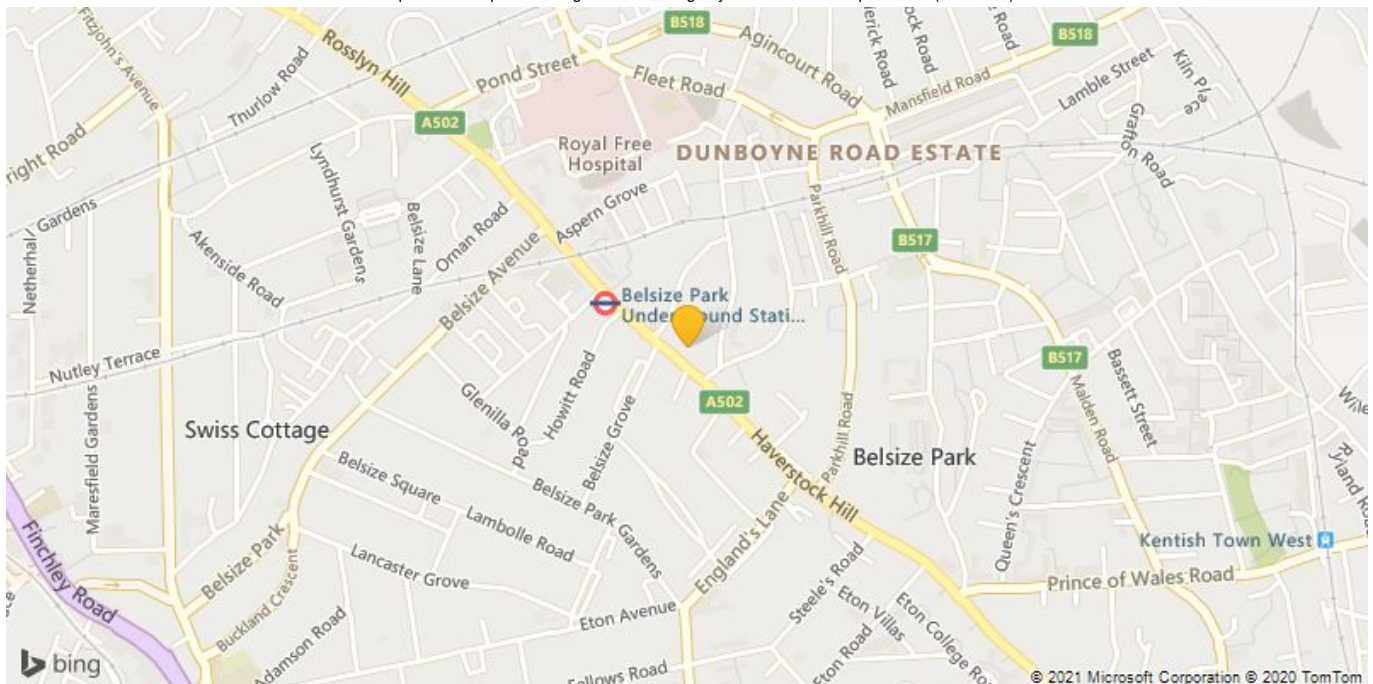
## Haverstock Hill, NW3

Approximate Gross Internal Area = 1641 sq ft / 152.5 sq m



Lower Ground Floor

This plan is for layout guidance only. Not drawn to scale unless stated. Windows and door openings are approximate. Whilst every care is taken in the preparation of this plan, please check all dimensions, shapes and compass bearings before making any decisions reliant upon them. (ID727123)



Call 020 7759 2199 to view this property, or visit [www.vitaproperties.co.uk](http://www.vitaproperties.co.uk) for more details

27 Northways Parade, College Crescent, London, NW3 5DN | T: 020 7759 2199 | E: [enquiries@vitaproperties.co.uk](mailto:enquiries@vitaproperties.co.uk)

We make all efforts to ensure this information is accurate, but we can't guarantee it.