

Downe Mansions, Gondar Gardens, West Hampstead, London NW6

Weekly Rental Of £600 Monthly Rental Of £2,600



Set on the first floor of this purpose built Victorian mansion block is this large three bed property which beautifully incorporates the stunning features you come to expect of these period conversions - high ceilings, large windows & multiple feature fireplaces. As well as some more modern fittings including solid wood floors, large built in wardrobes with pressure doors, a fully integrated kitchen. All three bedrooms are good sized doubles, with the master being slightly bigger. Residents will also benefit from well manicured communal gardens.

Set on a picturesque residential street and within a 15 minute walking distance of 5 stations; West Hampstead (Overground), West Hampstead (Jubilee), Kilburn (Jubilee) & Cricklewood (Overground)

- Bedrooms: 3
- Receptions : 1
- Bathrooms: 2
- Property Type: Flat
- Garden: Yes
- Newly refurbished
- First Floor
- Furnished
- Spacious
- Available immediately

- Kilburn (10 minutes/0.5 miles)
- West Hampstead (10 minutes/0.5 miles)
- Brondesbury (12 minutes/0.6 miles)
- Cricklewood (12 minutes/0.6 miles)
- Willesden Green (18 minutes/0.9 miles)

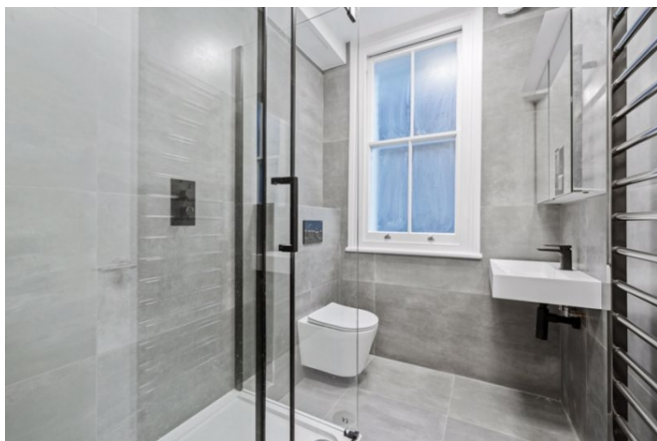
Call 020 7759 2199 to view this property, or visit www.vitaproperties.co.uk for more details

27 Northways Parade, College Crescent, London, NW3 5DN | T: 020 7759 2199 | E: enquiries@vitaproperties.co.uk

We make all efforts to ensure this information is accurate, but we can't guarantee it.

Downe Mansions, Gondar Gardens, West Hampstead, London NW6

Weekly Rental Of £600 Monthly Rental Of £2,600



Call 020 7759 2199 to view this property, or visit www.vitaproperties.co.uk for more details

27 Northways Parade, College Crescent, London, NW3 5DN | T: 020 7759 2199 | E: enquiries@vitaproperties.co.uk

We make all efforts to ensure this information is accurate, but we can't guarantee it.

Downe Mansions, Gondar Gardens, West Hampstead, London NW6

Weekly Rental Of £600 Monthly Rental Of £2,600



Call 020 7759 2199 to view this property, or visit www.vitaproperties.co.uk for more details

27 Northways Parade, College Crescent, London, NW3 5DN | T: 020 7759 2199 | E: enquiries@vitaproperties.co.uk

We make all efforts to ensure this information is accurate, but we can't guarantee it.

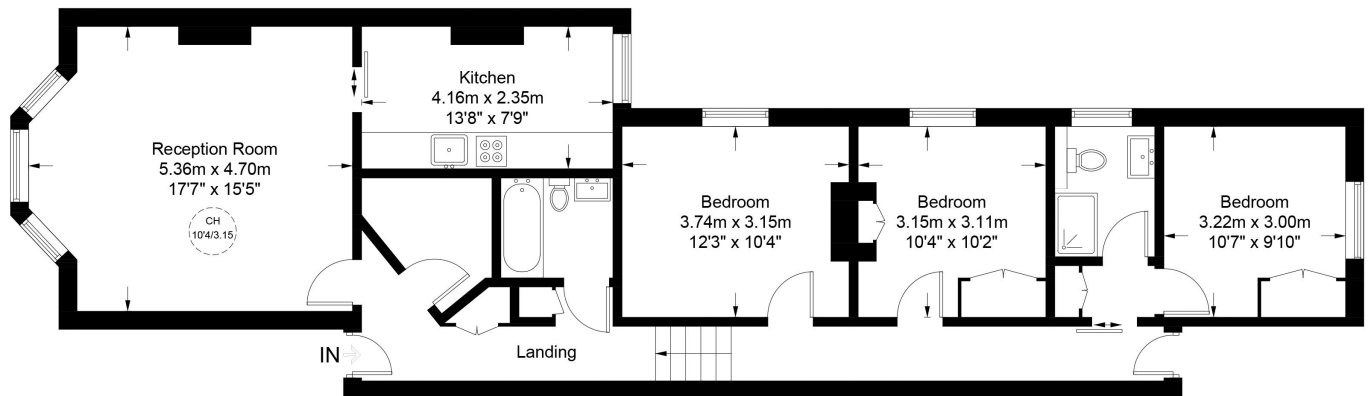
Downe Mansions, Gondar Gardens, West Hampstead, London NW6

Weekly Rental Of £600 Monthly Rental Of £2,600



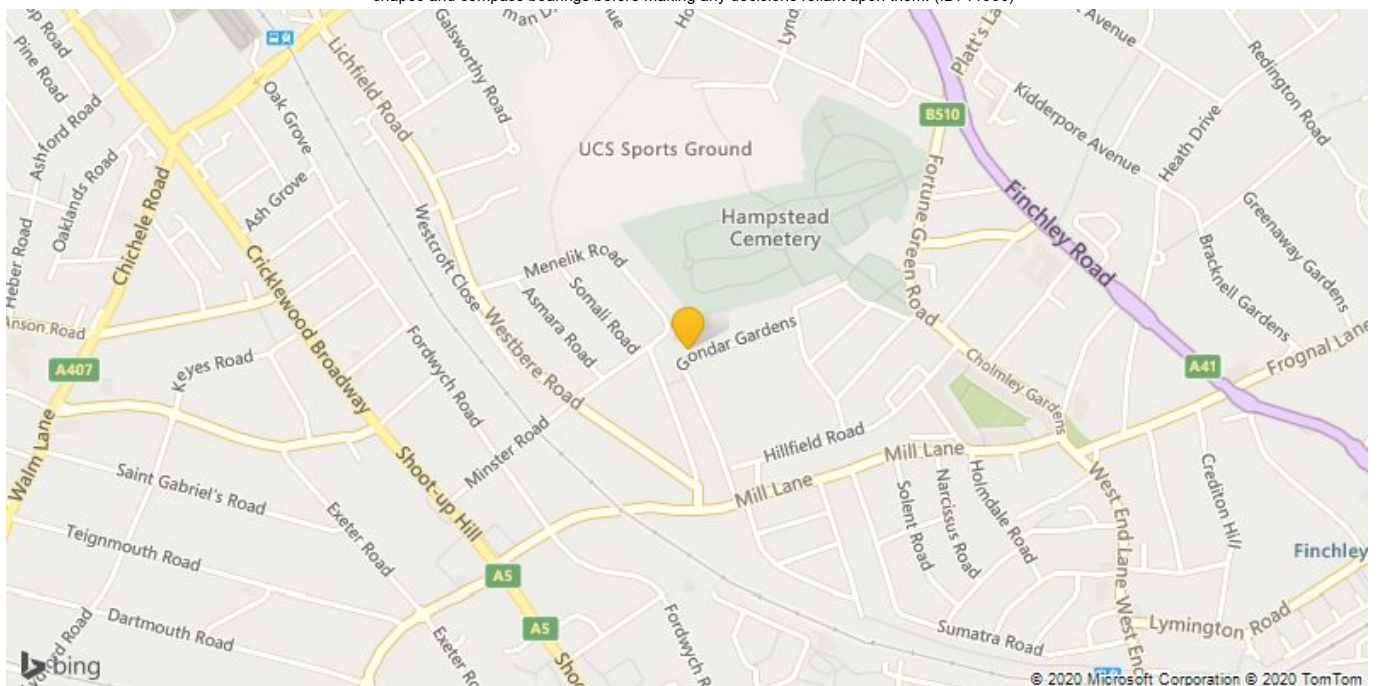
Gondar Gardens, NW6

Approximate Gross Internal Area = 1034 sq ft / 96.1 sq m



First Floor

This plan is for layout guidance only. Not drawn to scale unless stated. Windows and door openings are approximate. Whilst every care is taken in the preparation of this plan, please check all dimensions, shapes and compass bearings before making any decisions reliant upon them. (ID711986)



Call 020 7759 2199 to view this property, or visit www.vitaproperties.co.uk for more details

27 Northways Parade, College Crescent, London, NW3 5DN | T: 020 7759 2199 | E: enquiries@vitaproperties.co.uk

We make all efforts to ensure this information is accurate, but we can't guarantee it.