

Greencroft Gardens, South Hampstead, London NW6

Weekly Rental Of £775 Monthly Rental Of £3,358



Beautifully presented and extremely bright three double bedroom three bathroom upper maisonette set over the upper floors of this substantial period residence in the heart of South Hampstead.

This outstanding apartment offers in excess of 1300sq ft, and benefits from exceptional entertaining space with a magnificent 35ft kitchen/reception room having a feature fire place and high ceilings, principle bedroom with en-suite, two further double bedrooms (one with a further en-suite), family bathroom. Further benefits include: Amazing internal staircase, hardwood oak flooring, large sash windows, Share of Freehold.

Greencroft Gardens is superbly situated for access to many fashionable cafes and local amenities of West End Lane and Finchley road.

- Bedrooms: 3
- Receptions : 1
- Bathrooms: 2
- Property Type: Flat
- Three Double bedrooms
- Three Bathrooms
- Amazing Entertaining space
- Huge Ceiling Heights
- Kitchen & Island
- Available immediately

- South Hampstead (4 minutes/0.2 miles)
- Finchley Road (4 minutes/0.2 miles)
- Swiss Cottage (6 minutes/0.3 miles)
- Finchley Road & Frognal (8 minutes/0.4 miles)
- Kilburn High Road (12 minutes/0.6 miles)

Call 020 7759 2199 to view this property, or visit www.vitaproperties.co.uk for more details

27 Northways Parade, College Crescent, London, NW3 5DN | T: 020 7759 2199 | E: enquiries@vitaproperties.co.uk

We make all efforts to ensure this information is accurate, but we can't guarantee it.

Greencroft Gardens, South Hampstead, London NW6

Weekly Rental Of £775 Monthly Rental Of £3,358



Call 020 7759 2199 to view this property, or visit www.vitaproperties.co.uk for more details

27 Northways Parade, College Crescent, London, NW3 5DN | T: 020 7759 2199 | E: enquiries@vitaproperties.co.uk

We make all efforts to ensure this information is accurate, but we can't guarantee it.

Greencroft Gardens, South Hampstead, London NW6

Weekly Rental Of £775 Monthly Rental Of £3,358



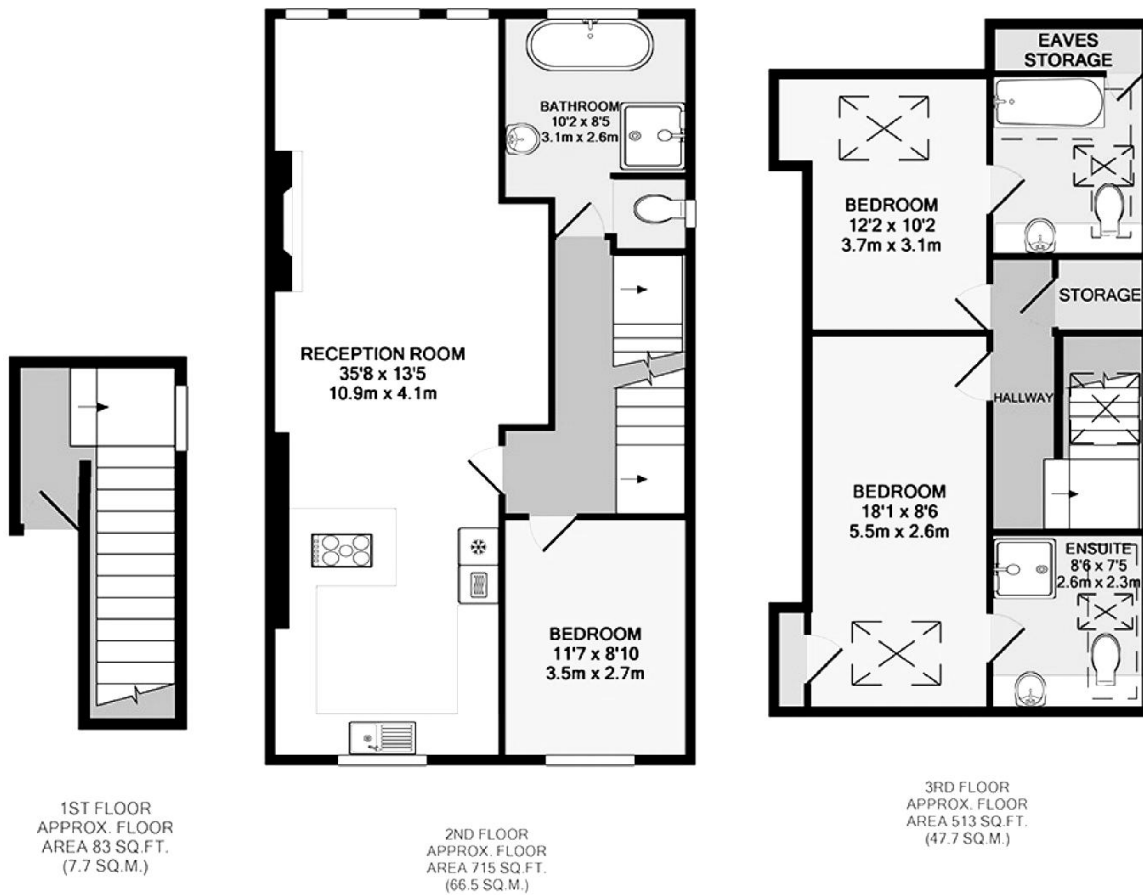
Call 020 7759 2199 to view this property, or visit www.vitaproperties.co.uk for more details

27 Northways Parade, College Crescent, London, NW3 5DN | T: 020 7759 2199 | E: enquiries@vitaproperties.co.uk

We make all efforts to ensure this information is accurate, but we can't guarantee it.

Greencroft Gardens, South Hampstead, London NW6

Weekly Rental Of £775 Monthly Rental Of £3,358



GREENCROFT GARDENS NW6 TOTAL APPROX. FLOOR AREA 1311 SQ.FT. (121.8 SQ.M.)

Whilst every attempt has been made to ensure the accuracy of the floor plan contained here, measurements of doors, windows, rooms and any other items are approximate and no responsibility is taken for any error, omission, or mis-statement. This plan is for illustrative purposes only and should be used as such by any prospective purchaser. The services, systems and appliances shown have not been tested and no guarantee as to their operability or efficiency can be given

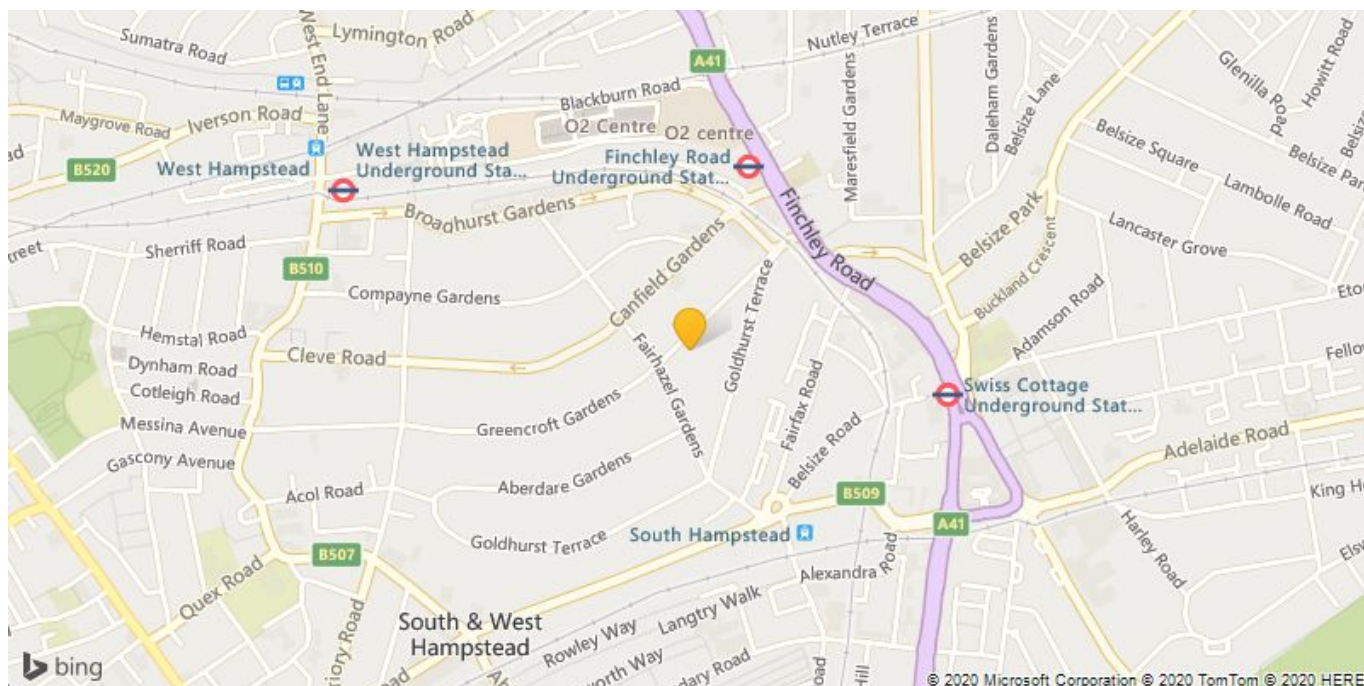
Call 020 7759 2199 to view this property, or visit www.vitaproperties.co.uk for more details

27 Northways Parade, College Crescent, London, NW3 5DN | T: 020 7759 2199 | E: enquiries@vitaproperties.co.uk

We make all efforts to ensure this information is accurate, but we can't guarantee it.

Greencroft Gardens, South Hampstead, London NW6

Weekly Rental Of £775 Monthly Rental Of £3,358



Call 020 7759 2199 to view this property, or visit www.vitaproperties.co.uk for more details

27 Northways Parade, College Crescent, London, NW3 5DN | T: 020 7759 2199 | E: enquiries@vitaproperties.co.uk

We make all efforts to ensure this information is accurate, but we can't guarantee it.