

Northways, College Crescent, Swiss Cottage, NW3

Weekly Rental Of £400 Monthly Rental Of £1,733



We are delighted to present this 2 bed apartment in this well maintained development with a porter. Benefitting from integrated storage space, charming wood floors throughout and close proximity to Swiss Cottage Station.

Northways is located close to Hampstead and Belsize Park, while also benefiting from the excellent selection of amenities on Finchley Road. Available 17th September 2020 & Offered Furnished.

- Swiss Cottage (2 minutes/0.1 miles)
- Finchley Road (4 minutes/0.2 miles)
- South Hampstead (6 minutes/0.3 miles)
- Finchley Road & Frognal (10 minutes/0.5 miles)
- Belsize Park (12 minutes/0.6 miles)

- Bedrooms: 2
- Receptions : 1
- Bathrooms: 1
- Property Type: Flat
- Well-maintained development with porter
- Spacious master bedroom with ample storage space
- Close to Swiss Cottage and Finchley Road Underground
- Hot water and heating included
- Bright reception room with wood floors
- Available 17th September 2020

Call 020 7759 2199 to view this property, or visit www.vitaproperties.co.uk for more details

27 Northways Parade, College Crescent, London, NW3 5DN | T: 020 7759 2199 | E: enquiries@vitaproperties.co.uk

We make all efforts to ensure this information is accurate, but we can't guarantee it.

Northways, College Crescent, Swiss Cottage, NW3

Weekly Rental Of £400 Monthly Rental Of £1,733



Call 020 7759 2199 to view this property, or visit www.vitaproperties.co.uk for more details

27 Northways Parade, College Crescent, London, NW3 5DN | T: 020 7759 2199 | E: enquiries@vitaproperties.co.uk

We make all efforts to ensure this information is accurate, but we can't guarantee it.

Northways, College Crescent, Swiss Cottage, NW3

Weekly Rental Of £400 Monthly Rental Of £1,733



Call 020 7759 2199 to view this property, or visit www.vitaproperties.co.uk for more details

27 Northways Parade, College Crescent, London, NW3 5DN | T: 020 7759 2199 | E: enquiries@vitaproperties.co.uk

We make all efforts to ensure this information is accurate, but we can't guarantee it.

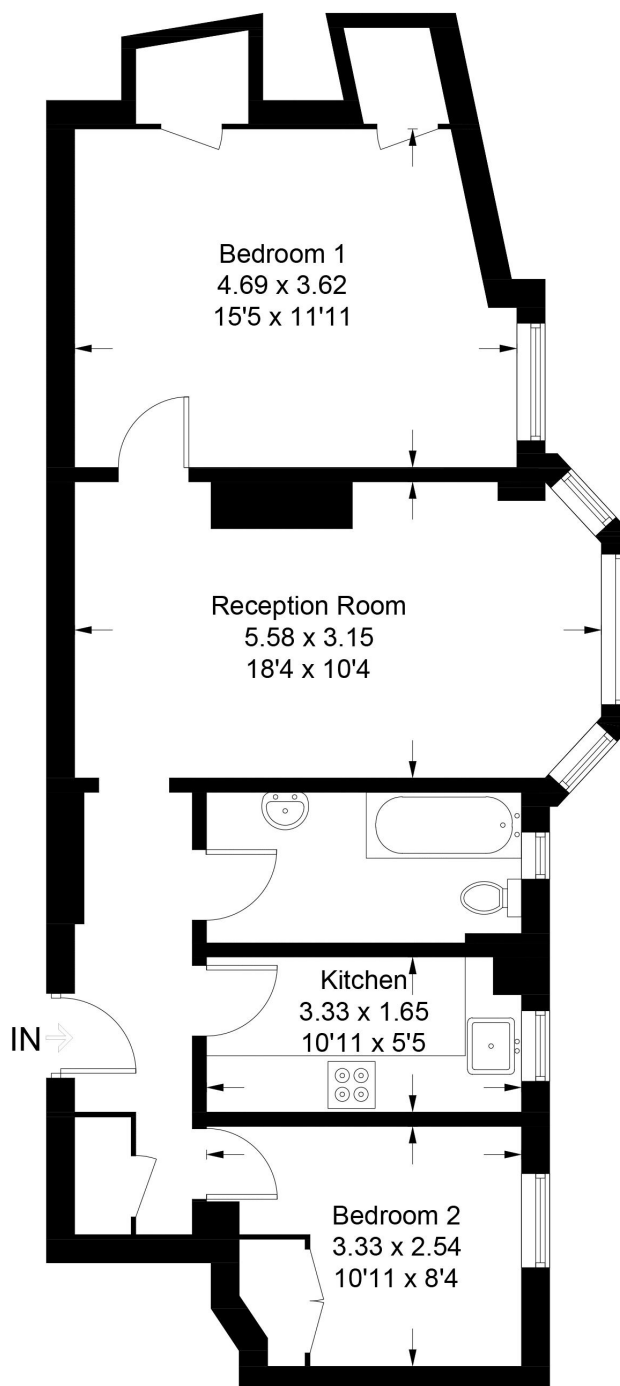
Northways, College Crescent, Swiss Cottage, NW3

Weekly Rental Of £400 Monthly Rental Of £1,733



Northways College Crescent, NW3

Approximate Gross Internal Area = 63.2 sq m / 680 sq ft



Second Floor

Illustration for identification purposes only, measurements are approximate, not to scale. floorplansUsketch.com © (ID672713)

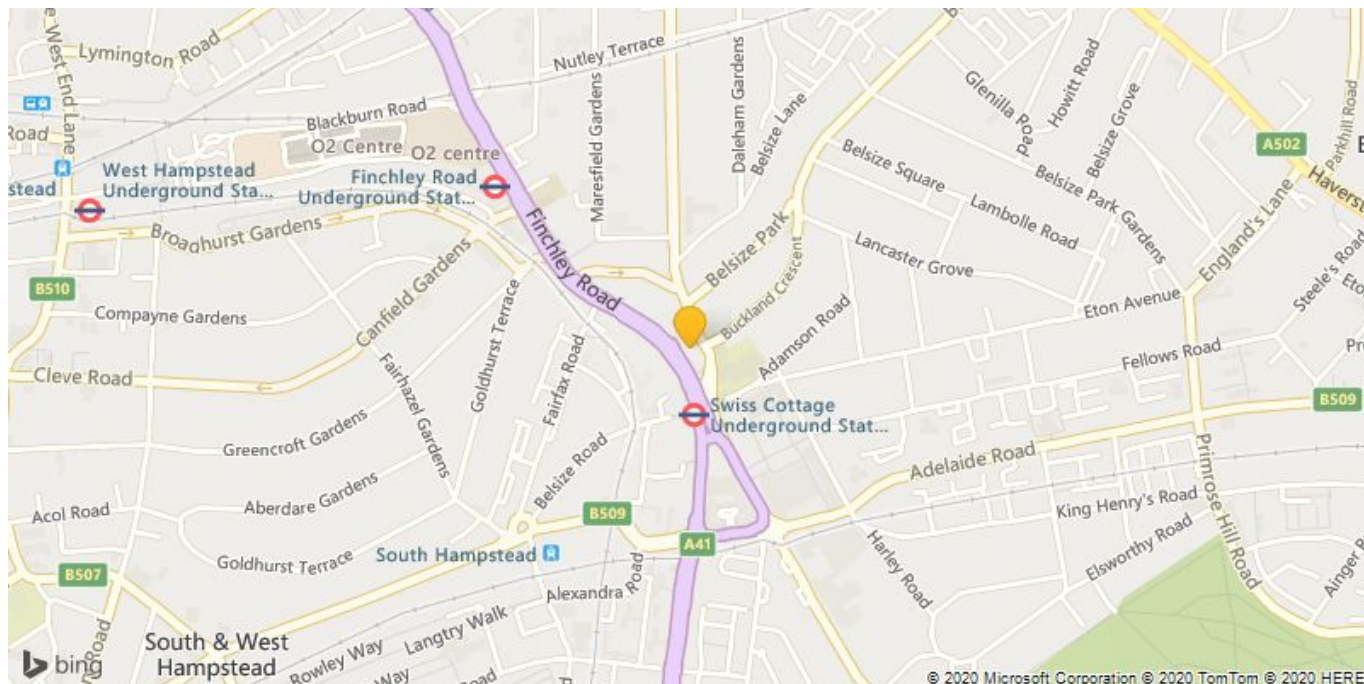
Call 020 7759 2199 to view this property, or visit www.vitaproperties.co.uk for more details

27 Northways Parade, College Crescent, London, NW3 5DN | T: 020 7759 2199 | E: enquiries@vitaproperties.co.uk

We make all efforts to ensure this information is accurate, but we can't guarantee it.

Northways, College Crescent, Swiss Cottage, NW3

Weekly Rental Of £400 Monthly Rental Of £1,733



Call 020 7759 2199 to view this property, or visit www.vitaproperties.co.uk for more details

27 Northways Parade, College Crescent, London, NW3 5DN | T: 020 7759 2199 | E: enquiries@vitaproperties.co.uk

We make all efforts to ensure this information is accurate, but we can't guarantee it.