

Sutherland Avenue, Maida Vale, London, W9

Weekly Rental Of £600 Monthly Rental Of £2,600



As main agents Vita Properties are delighted to offer this development of 8x 3 bedroom and 2x 2 bedroom (all doubles) fully-refurbished apartments to the market (all with en-suite). This particular flat consists of 2 double bedrooms, 1 single, high quality fixtures and fittings throughout and step-free access from all flats to the shared gardens, A large double reception room, a beautifully fitted kitchen, 2 modern tiled bathrooms (1 en suite) & access to the shared garden. The flat is located moments from Warwick Avenue tube and Little Venice. Available 07 August 2020 on a furnished or unfurnished basis

- Maida Vale (6 minutes/0.3 miles)
- Kilburn Park (14 minutes/0.7 miles)
- Westbourne Grove (16 minutes/0.8 miles)
- Kilburn High Road (18 minutes/0.9 miles)
- St Johns Wood (18 minutes/0.9 miles)

- Bedrooms: 3
- Receptions : 1
- Bathrooms: 2
- Property Type: Flat
- Modern
- Access to communal gardens
- Within minutes of Warwick Avenue tube
- En suite shower
- Great storage
- Council tax - G - £1135 per annum

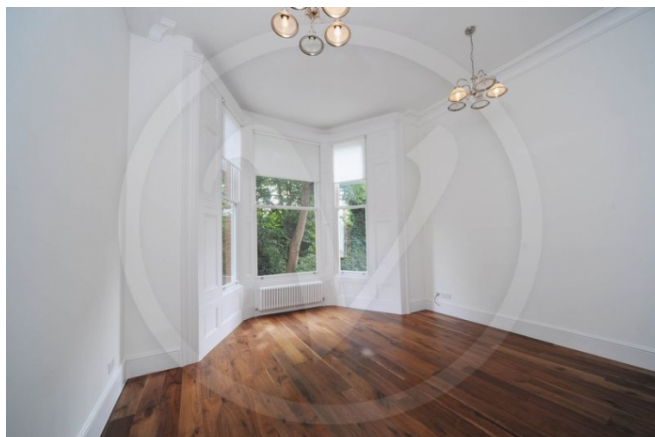
Call 020 7759 2199 to view this property, or visit www.vitaproperties.co.uk for more details

27 Northways Parade, College Crescent, London, NW3 5DN | T: 020 7759 2199 | E: enquiries@vitaproperties.co.uk

We make all efforts to ensure this information is accurate, but we can't guarantee it.

Sutherland Avenue, Maida Vale, London, W9

Weekly Rental Of £600 Monthly Rental Of £2,600



Call 020 7759 2199 to view this property, or visit www.vitaproperties.co.uk for more details

27 Northways Parade, College Crescent, London, NW3 5DN | T: 020 7759 2199 | E: enquiries@vitaproperties.co.uk

We make all efforts to ensure this information is accurate, but we can't guarantee it.

Sutherland Avenue, Maida Vale, London, W9

Weekly Rental Of £600 Monthly Rental Of £2,600



Call 020 7759 2199 to view this property, or visit www.vitaproperties.co.uk for more details

27 Northways Parade, College Crescent, London, NW3 5DN | T: 020 7759 2199 | E: enquiries@vitaproperties.co.uk

We make all efforts to ensure this information is accurate, but we can't guarantee it.

Sutherland Avenue, Maida Vale, London, W9

Weekly Rental Of £600 Monthly Rental Of £2,600



Call 020 7759 2199 to view this property, or visit www.vitaproperties.co.uk for more details

27 Northways Parade, College Crescent, London, NW3 5DN | T: 020 7759 2199 | E: enquiries@vitaproperties.co.uk

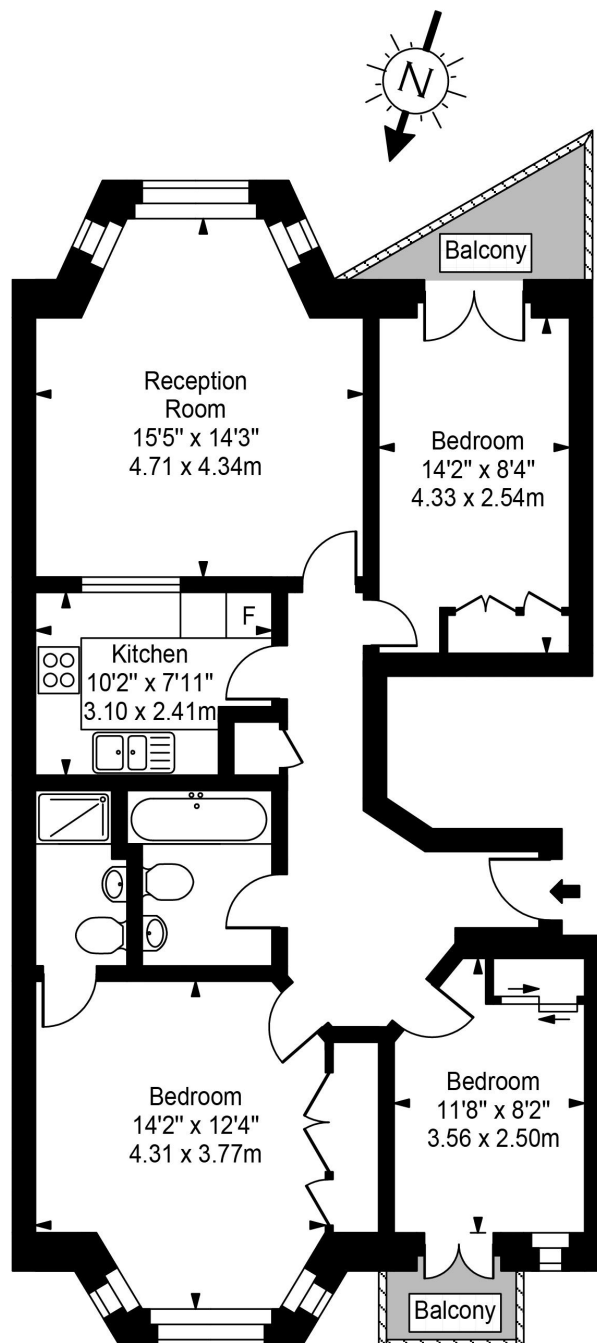
We make all efforts to ensure this information is accurate, but we can't guarantee it.

Sutherland Avenue, Maida Vale, London,
W9

Weekly Rental Of £600 Monthly Rental Of £2,600



Sutherland Avenue



Ground Floor



Approx Gross Internal Area **892 Sq Ft - 82.88 Sq M**

For Illustration Purposes Only - Not To Scale
Floor plan by www.creativeplanetlk.com

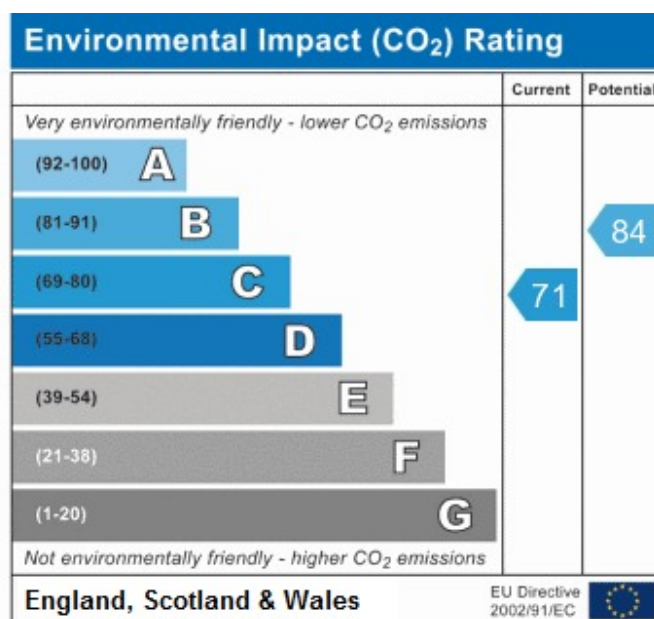
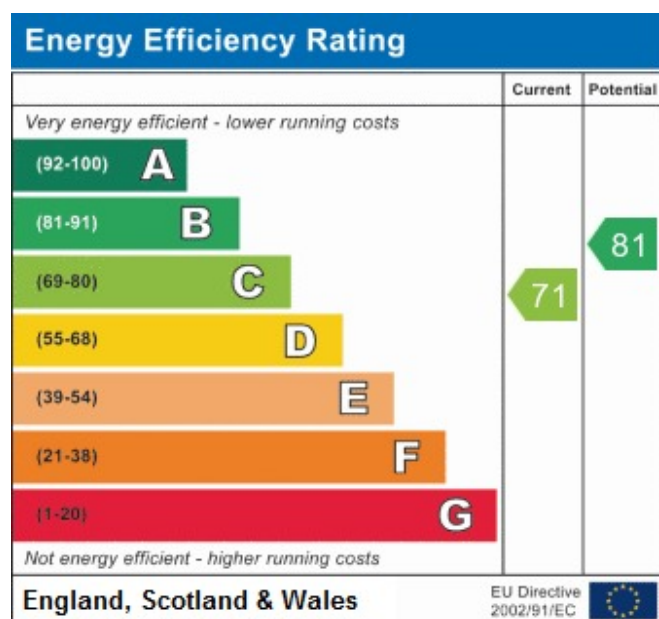
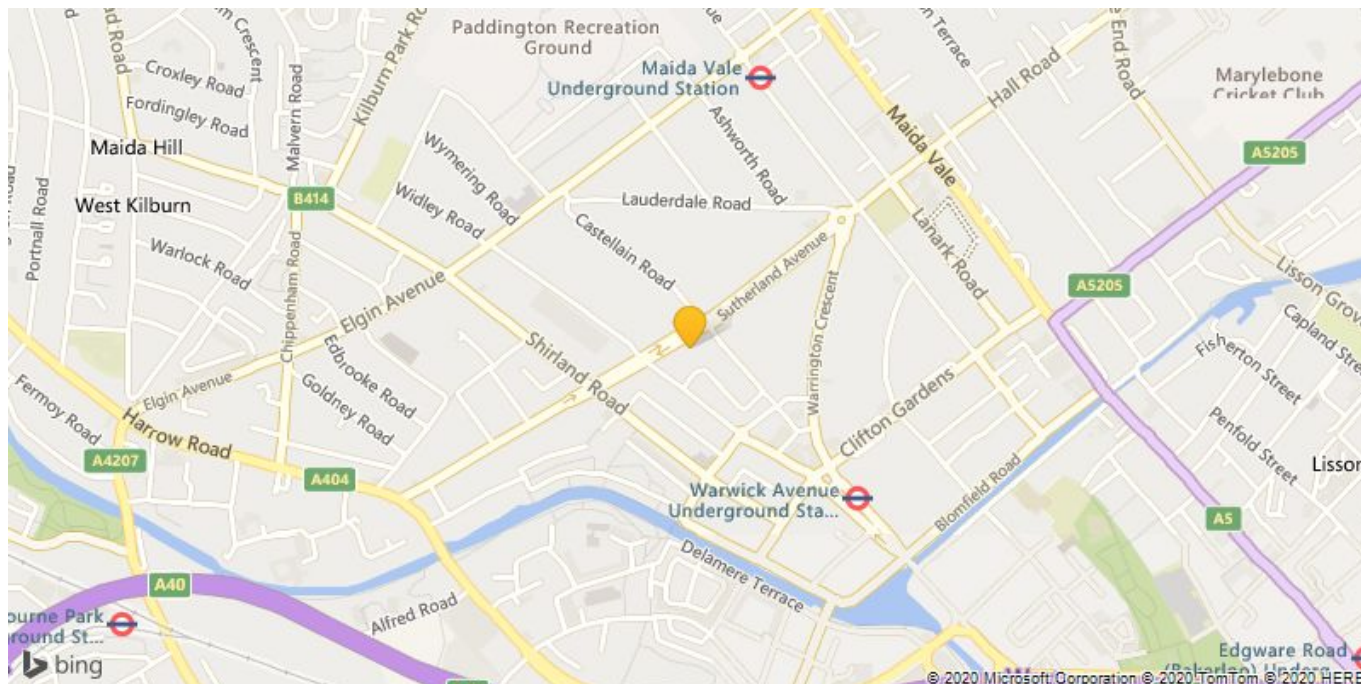
Call 020 7759 2199 to view this property, or visit www.vitaproperties.co.uk for more details

27 Northways Parade, College Crescent, London, NW3 5DN | T: 020 7759 2199 | E: enquiries@vitaproperties.co.uk

We make all efforts to ensure this information is accurate, but we can't guarantee it.

Sutherland Avenue, Maida Vale, London, W9

Weekly Rental Of £600 Monthly Rental Of £2,600



Call 020 7759 2199 to view this property, or visit www.vitaproperties.co.uk for more details

27 Northways Parade, College Crescent, London, NW3 5DN | T: 020 7759 2199 | E: enquiries@vitaproperties.co.uk

We make all efforts to ensure this information is accurate, but we can't guarantee it.