

Belsize Crescent, Belsize Park, London, NW3

Weekly Rental Of £575 Monthly Rental Of £2,492



We are delighted to offer as sole agents this fully modernised 2 bedroom 2 bathroom raised ground floor flat, located moments from Belsize Village. Available immediately and offered on an unfurnished or part furnished basis

- Finchley Road (6 minutes/0.3 miles)
- Belsize Park (8 minutes/0.4 miles)
- Finchley Road & Frognal (8 minutes/0.4 miles)
- Swiss Cottage (8 minutes/0.4 miles)
- Hampstead (10 minutes/0.5 miles)

- Bedrooms: 2
- Receptions : 1
- Bathrooms: 2
- Property Type: Flat
- Seconds to Belsize Village
- Refurbished
- Bright
- Managed
- Available for immediate occupation

Call 020 7759 2199 to view this property, or visit www.vitaproperties.co.uk for more details

27 Northways Parade, College Crescent, London, NW3 5DN | T: 020 7759 2199 | E: enquiries@vitaproperties.co.uk

We make all efforts to ensure this information is accurate, but we can't guarantee it.

Belsize Crescent, Belsize Park, London, NW3

Weekly Rental Of £575 Monthly Rental Of £2,492



Call 020 7759 2199 to view this property, or visit www.vitaproperties.co.uk for more details

27 Northways Parade, College Crescent, London, NW3 5DN | T: 020 7759 2199 | E: enquiries@vitaproperties.co.uk

We make all efforts to ensure this information is accurate, but we can't guarantee it.

Belsize Crescent, Belsize Park, London, NW3

Weekly Rental Of £575 Monthly Rental Of £2,492



Call 020 7759 2199 to view this property, or visit www.vitaproperties.co.uk for more details

27 Northways Parade, College Crescent, London, NW3 5DN | T: 020 7759 2199 | E: enquiries@vitaproperties.co.uk

We make all efforts to ensure this information is accurate, but we can't guarantee it.

Belsize Crescent, Belsize Park, London, NW3

Weekly Rental Of £575 Monthly Rental Of £2,492



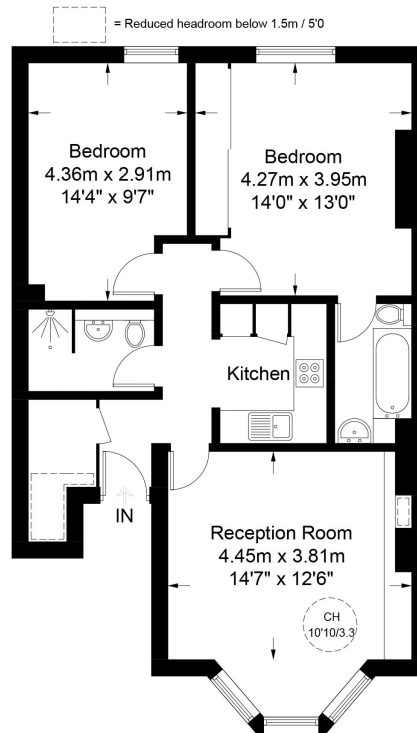
Belsize Crescent, NW3

Approximate Gross Internal Area = 752 sq ft / 69.9 sq m

(Excluding Reduce Headroom)

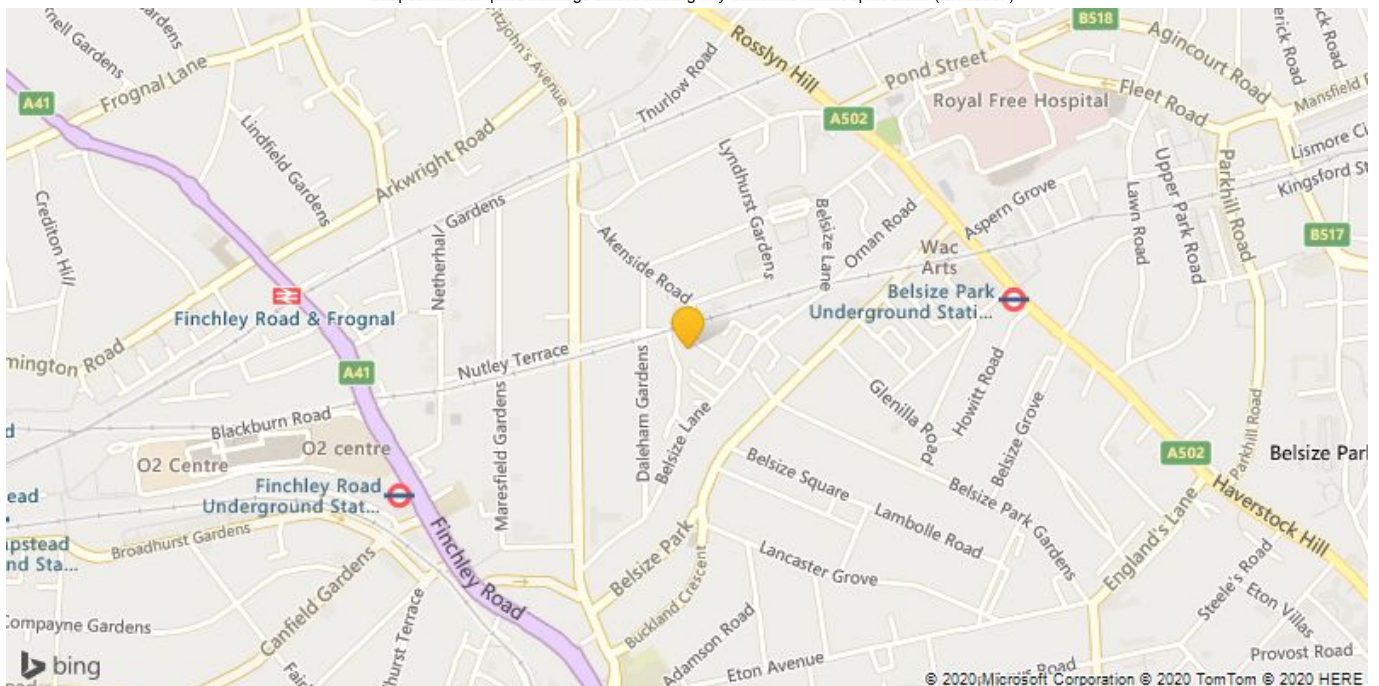
Reduce Headroom = 13 sq ft / 1.2 sq m

Total = 765 sq ft / 71.1 sq m



Upper Ground Floor

This plan is for layout guidance only. Not drawn to scale unless stated. Windows and door openings are approximate. Whilst every care is taken in the preparation of this plan, please check all dimensions, shapes and compass bearings before making any decisions reliant upon them. (ID660037)



Call 020 7759 2199 to view this property, or visit www.vitaproperties.co.uk for more details

27 Northways Parade, College Crescent, London, NW3 5DN | T: 020 7759 2199 | E: enquiries@vitaproperties.co.uk

We make all efforts to ensure this information is accurate, but we can't guarantee it.