

Fitzjohns Avenue, Hampstead, London, NW3

Weekly Rental Of £995 Monthly Rental Of £4,312



A light and airy three bed, three bath garden flat, set close to the amenities of Hampstead High Street and Belsize Park, which has a good range of shops, bars and restaurants. This property is within walking distance to Hampstead Heath which has beautiful green spaces and lakes.

Set across 1037 sq ft of luxuriously appointed living space you have a large reception room which leads onto the generous garden space, modern kitchen, large master bedroom with en-suite and built in wardrobes, two smaller bedrooms, a family bathroom and separate WC.

- Bedrooms: 3
- Receptions : 1
- Bathrooms: 2
- Property Type: Flat
- Three Bed, Two Bath
- Garden Flat
- Light and Airy
- Furnished to a High Standard
- Built in Wardrobes
- Available immediately

- Hampstead (2 minutes/0.1 miles)
- Finchley Road & Frognal (8 minutes/0.4 miles)
- Hampstead Heath (10 minutes/0.5 miles)
- Finchley Road (12 minutes/0.6 miles)
- Belsize Park (14 minutes/0.7 miles)

Call 020 7759 2199 to view this property, or visit www.vitaproperties.co.uk for more details

27 Northways Parade, College Crescent, London, NW3 5DN | T: 020 7759 2199 | E: enquiries@vitaproperties.co.uk

We make all efforts to ensure this information is accurate, but we can't guarantee it.

Fitzjohns Avenue, Hampstead, London, NW3

Weekly Rental Of £995 Monthly Rental Of £4,312



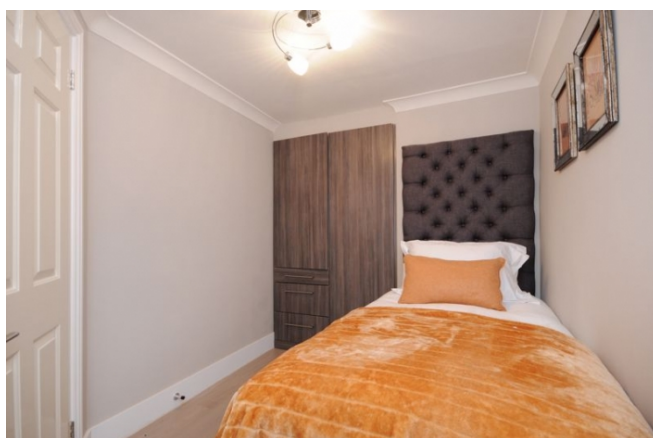
Call 020 7759 2199 to view this property, or visit www.vitaproperties.co.uk for more details

27 Northways Parade, College Crescent, London, NW3 5DN | T: 020 7759 2199 | E: enquiries@vitaproperties.co.uk

We make all efforts to ensure this information is accurate, but we can't guarantee it.

Fitzjohns Avenue, Hampstead, London, NW3

Weekly Rental Of £995 Monthly Rental Of £4,312



Call 020 7759 2199 to view this property, or visit www.vitaproperties.co.uk for more details

27 Northways Parade, College Crescent, London, NW3 5DN | T: 020 7759 2199 | E: enquiries@vitaproperties.co.uk

We make all efforts to ensure this information is accurate, but we can't guarantee it.

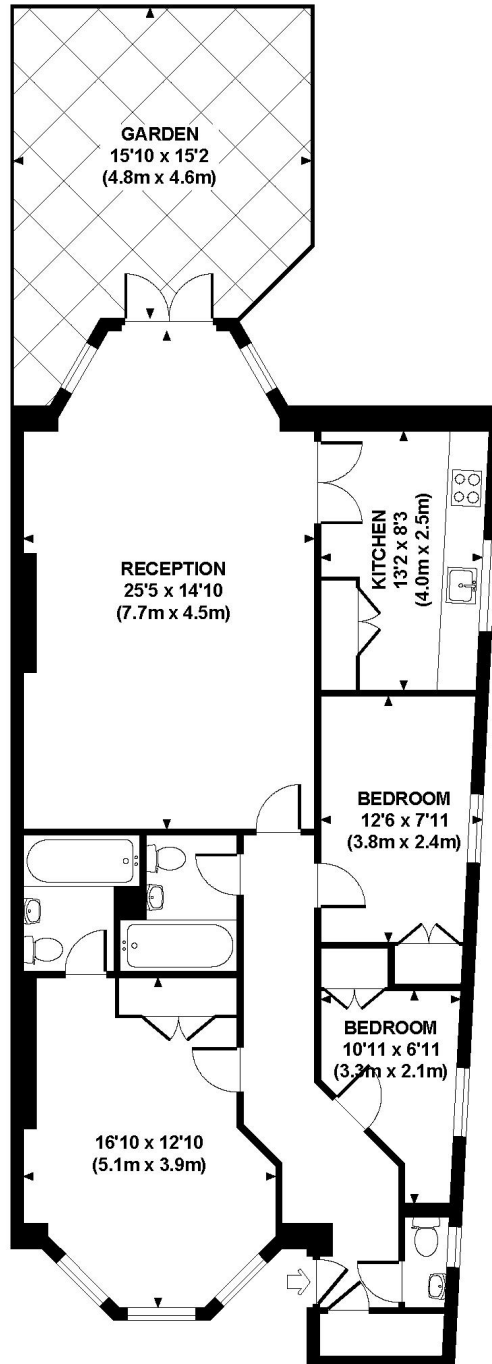
Fitzjohns Avenue, Hampstead, London,
NW3

Weekly Rental Of £995 Monthly Rental Of £4,312



FITZJOHNS AVENUE

Approximate Gross Internal Area 1037 sq ft / 96.3 sq m



LOWER GROUND FLOOR
GROSS INTERNAL
FLOOR AREA 1037 SQ FT

Although every attempt has been made to ensure accuracy, all measurements are approximate.
The floor plan is for illustrative purposes only and not to scale. Measured in accordance to RICS standards.
DE-PHOTOGRAPHY.NET

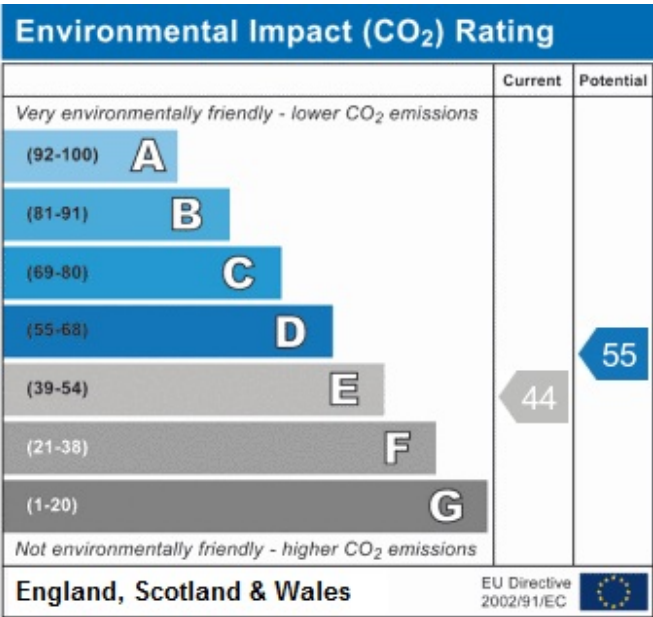
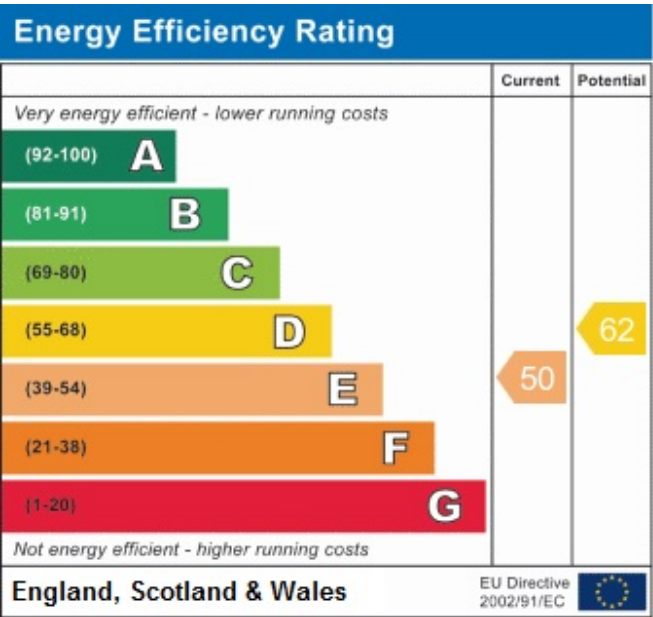
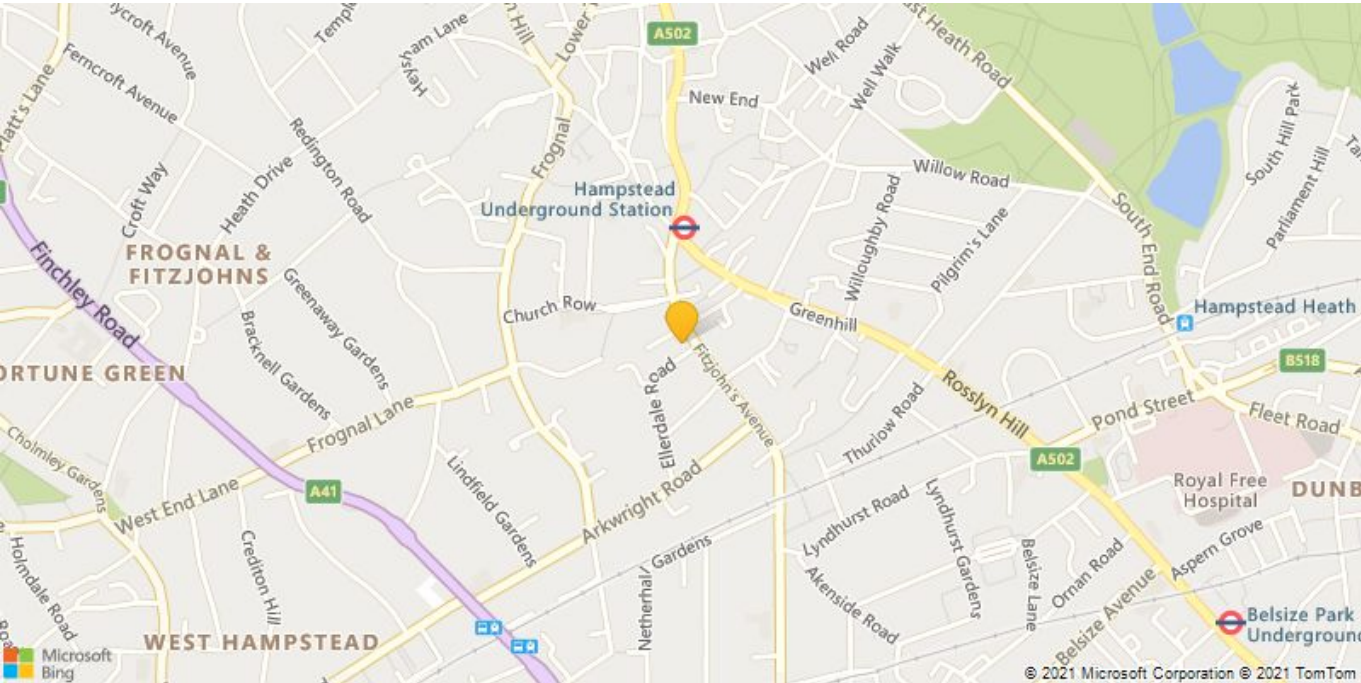
Call 020 7759 2199 to view this property, or visit www.vitaproperties.co.uk for more details

27 Northways Parade, College Crescent, London, NW3 5DN | T: 020 7759 2199 | E: enquiries@vitaproperties.co.uk

We make all efforts to ensure this information is accurate, but we can't guarantee it.

Fitzjohns Avenue, Hampstead, London, NW3

Weekly Rental Of £995Monthly Rental Of £4,312



Call 020 7759 2199 to view this property, or visit www.vitaproperties.co.uk for more details