

Chatsworth Road, Mapesbury, London,
NW2

£750,000



Presenting this stunning 824 sq ft, two bed, two bath, brand new garden flat. This beautiful property has recently been developed from a single period house into four great sized modern homes.

Offering two incredible spacious double bedrooms with en-suite shower room to the master, an open-plan living room/ kitchen, and finally a large family bathroom.

Boasting gorgeous hardwood floors throughout, stylish fully fitted kitchen with built in modern appliances, contemporary coloured brick feature bathrooms, high ceilings and spot lighting throughout.

Set on a picturesque tree-lined street and enviably located just moments from Willesden Green station (Jubilee Line) along with excellent connections for the overground.

- Bedrooms: 2
- Receptions : 1
- Bathrooms: 2
- Property Type: Flat
- Parking: Yes
- Spacious two bedroom ground floor flat
- Moments to Willesden Green tube
- A private section of the garden
- Chain free
- Share of Freehold

- Willesden Green (4 minutes/0.2 miles)
- Kilburn (12 minutes/0.6 miles)
- Brondesbury Park (12 minutes/0.6 miles)
- Brondesbury (14 minutes/0.7 miles)
- Cricklewood (16 minutes/0.8 miles)

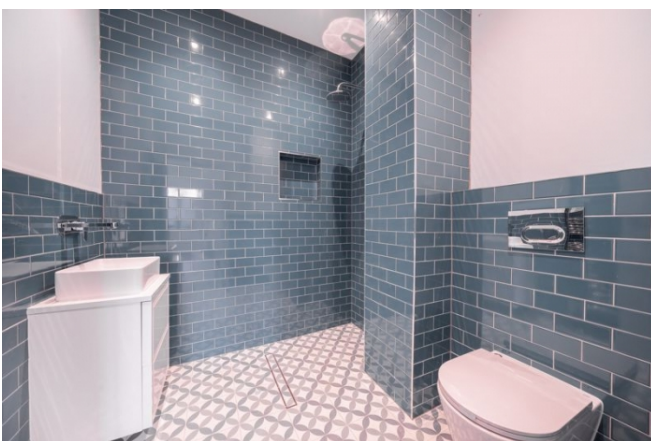
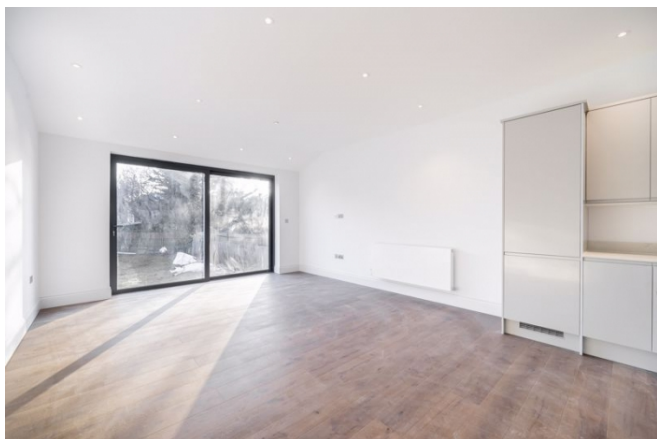
Call 020 7759 2199 to view this property, or visit www.vitaproperties.co.uk for more details

27 Northways Parade, College Crescent, London, NW3 5DN | T: 020 7759 2199 | E: enquiries@vitaproperties.co.uk

We make all efforts to ensure this information is accurate, but we can't guarantee it.

Chatsworth Road, Mapesbury, London,
NW2

£750,000



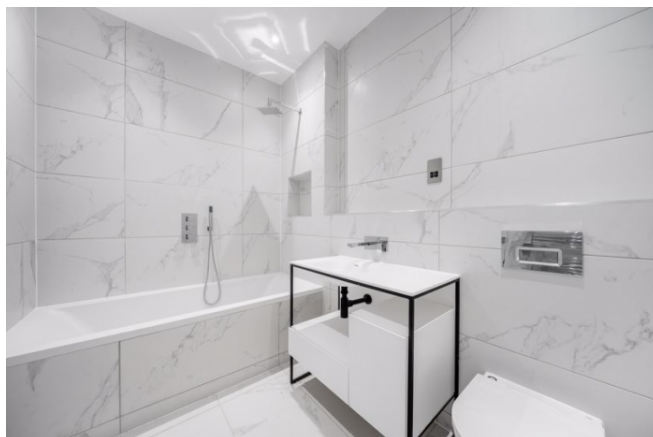
Call 020 7759 2199 to view this property, or visit www.vitaproperties.co.uk for more details

27 Northways Parade, College Crescent, London, NW3 5DN | T: 020 7759 2199 | E: enquiries@vitaproperties.co.uk

We make all efforts to ensure this information is accurate, but we can't guarantee it.

Chatsworth Road, Mapesbury, London,
NW2

£750,000



Call 020 7759 2199 to view this property, or visit www.vitaproperties.co.uk for more details

27 Northways Parade, College Crescent, London, NW3 5DN | T: 020 7759 2199 | E: enquiries@vitaproperties.co.uk

We make all efforts to ensure this information is accurate, but we can't guarantee it.

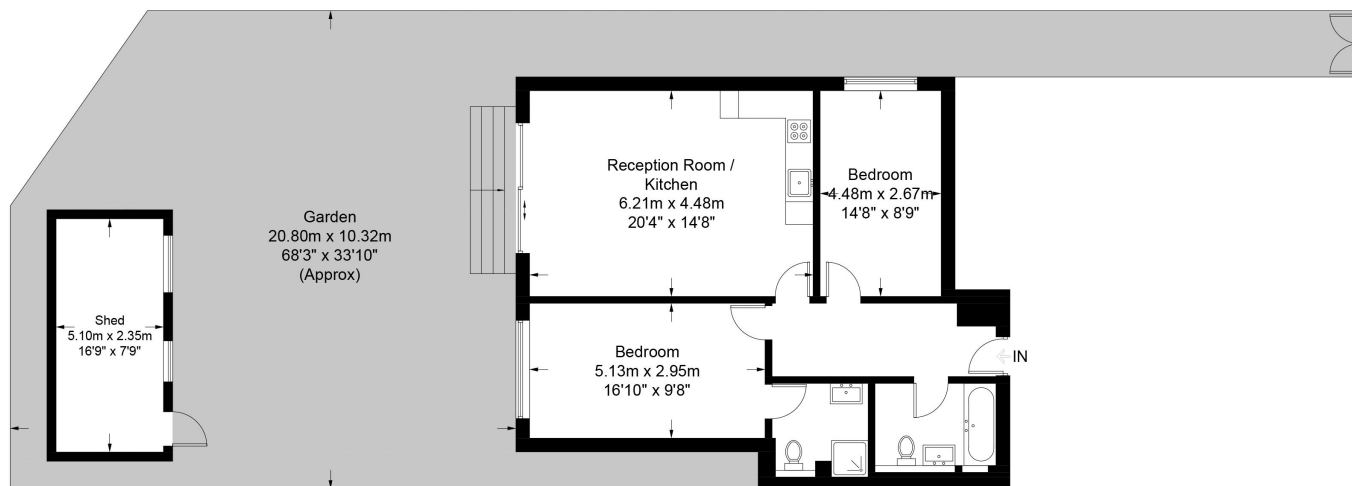
Chatsworth Road, Mapesbury, London, NW2

£750,000



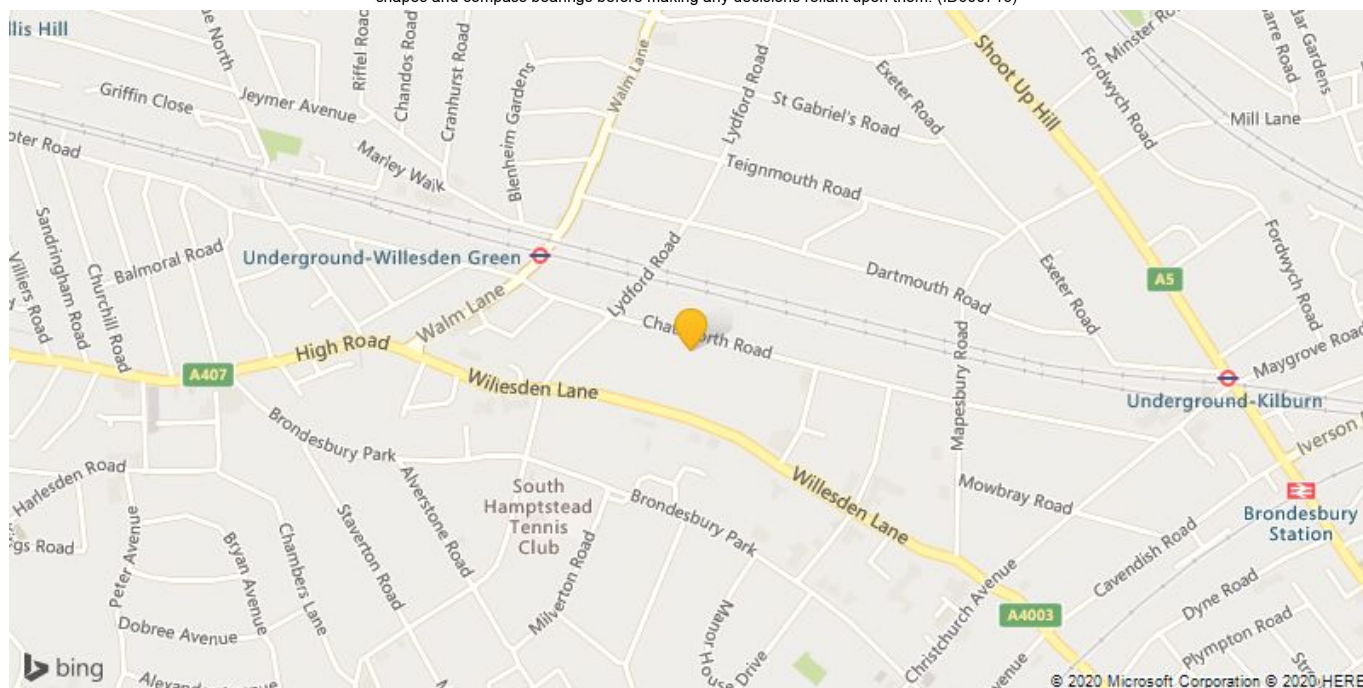
Chatsworth Road

Approximate Gross Internal Area = 824 sq ft / 76.6 sq m
Shed = 129 sq ft / 12.0 sq m
Total = 953 sq ft / 88.6 sq m



Ground Floor

This plan is for layout guidance only. Not drawn to scale unless stated. Windows and door openings are approximate. Whilst every care is taken in the preparation of this plan, please check all dimensions, shapes and compass bearings before making any decisions reliant upon them. (ID600716)



Call 020 7759 2199 to view this property, or visit www.vitaproperties.co.uk for more details

27 Northways Parade, College Crescent, London, NW3 5DN | T: 020 7759 2199 | E: enquiries@vitaproperties.co.uk

We make all efforts to ensure this information is accurate, but we can't guarantee it.