

# Boydell Court, St Johns Wood Park, London, NW8

Weekly Rental Of £1,100 Monthly Rental Of £4,767



A beautifully presented three bedroom (1062 Sq Ft) 2nd floor apartment situated in this well maintained purpose built block with 24 hour portage. The property has been refurbished to the highest standard and boasts a large, beautifully furnished reception room. Boydell Court is located within close proximity to the local amenities and underground stations of both Swiss Cottage and St Johns Wood (Jubilee Line). Principal Bedroom with En-Suite Bathroom and Built-in Wardrobe, Second Double Bedroom, Third Double Bedroom, Reception/Dining Room, Fully Fitted Kitchen, Guest Cloakroom and first come first serve parking

- South Hampstead (4 minutes/0.2 miles)
- Swiss Cottage (4 minutes/0.2 miles)
- St Johns Wood (10 minutes/0.5 miles)
- Finchley Road (10 minutes/0.5 miles)
- Finchley Road & Frognal (14 minutes/0.7 miles)

- Bedrooms: 3
- Receptions : 1
- Bathrooms: 2
- Property Type: Flat
- Parking: Yes
- 24 Hour Portage Within A Gated Development
- 2nd Floor with Lift Access
- Available for immediate occupation
- Bright & Spacious
- Fully furnished to an exceptional standard

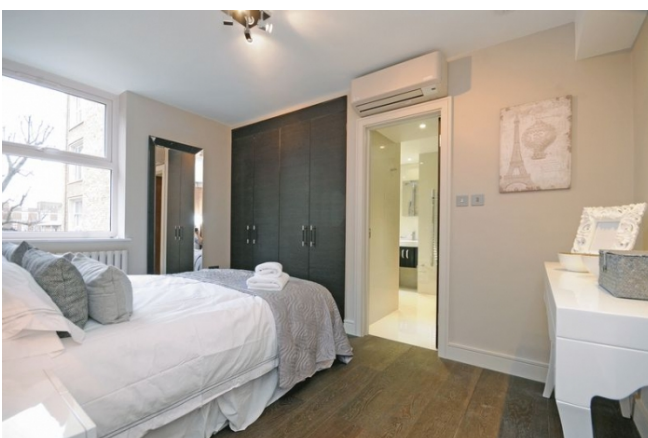
Call 020 7759 2199 to view this property, or visit [www.vitaproperties.co.uk](http://www.vitaproperties.co.uk) for more details

27 Northways Parade, College Crescent, London, NW3 5DN | T: 020 7759 2199 | E: [enquiries@vitaproperties.co.uk](mailto:enquiries@vitaproperties.co.uk)

We make all efforts to ensure this information is accurate, but we can't guarantee it.

# Boydell Court, St Johns Wood Park, London, NW8

Weekly Rental Of £1,100 Monthly Rental Of £4,767



Call 020 7759 2199 to view this property, or visit [www.vitaproperties.co.uk](http://www.vitaproperties.co.uk) for more details

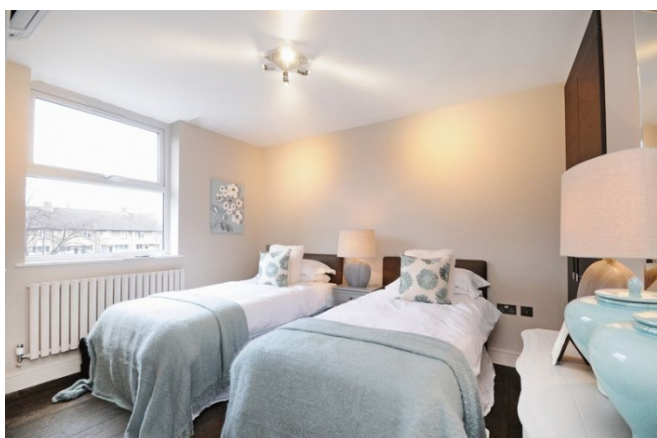
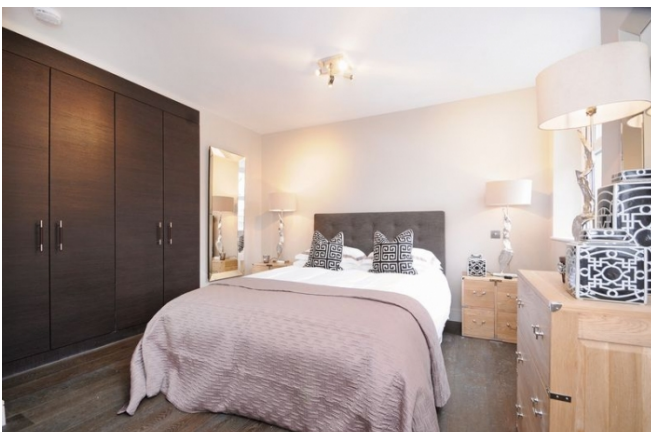
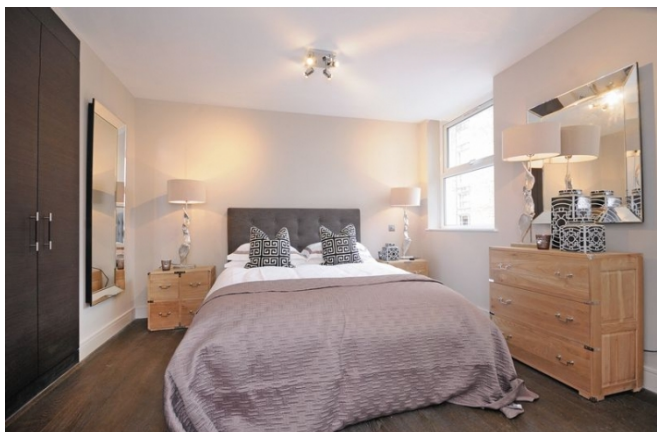
27 Northways Parade, College Crescent, London, NW3 5DN | T: 020 7759 2199 | E: [enquiries@vitaproperties.co.uk](mailto:enquiries@vitaproperties.co.uk)

We make all efforts to ensure this information is accurate, but we can't guarantee it.



# Boydell Court, St Johns Wood Park, London, NW8

Weekly Rental Of £1,100 Monthly Rental Of £4,767



Call 020 7759 2199 to view this property, or visit [www.vitaproperties.co.uk](http://www.vitaproperties.co.uk) for more details

27 Northways Parade, College Crescent, London, NW3 5DN | T: 020 7759 2199 | E: [enquiries@vitaproperties.co.uk](mailto:enquiries@vitaproperties.co.uk)

We make all efforts to ensure this information is accurate, but we can't guarantee it.

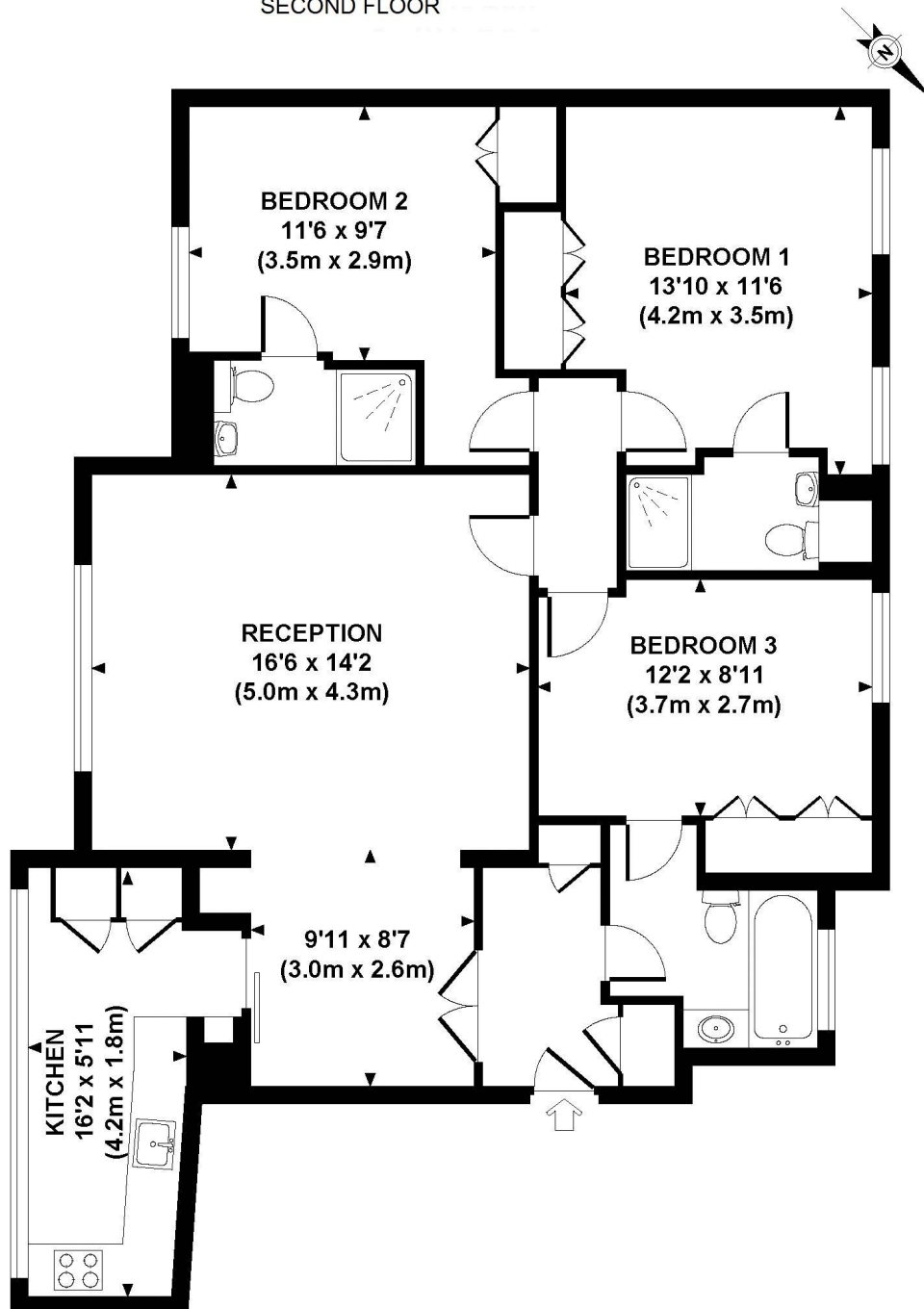
# Boydell Court, St Johns Wood Park, London, NW8

Weekly Rental Of £1,100 Monthly Rental Of £4,767



## FLAT 9 BOYDELL COURT

### SECOND FLOOR



**APPROXIMATE GROSS INTERNAL AREA 1062 SQ FT / 99 SQ M**

Although every attempt has been made to ensure accuracy, all measurements are approximate.  
The floor plan is for illustrative purposes only and not to scale. Measured in accordance to RICS standards.  
DE-PHOTOGRAPHY.NET

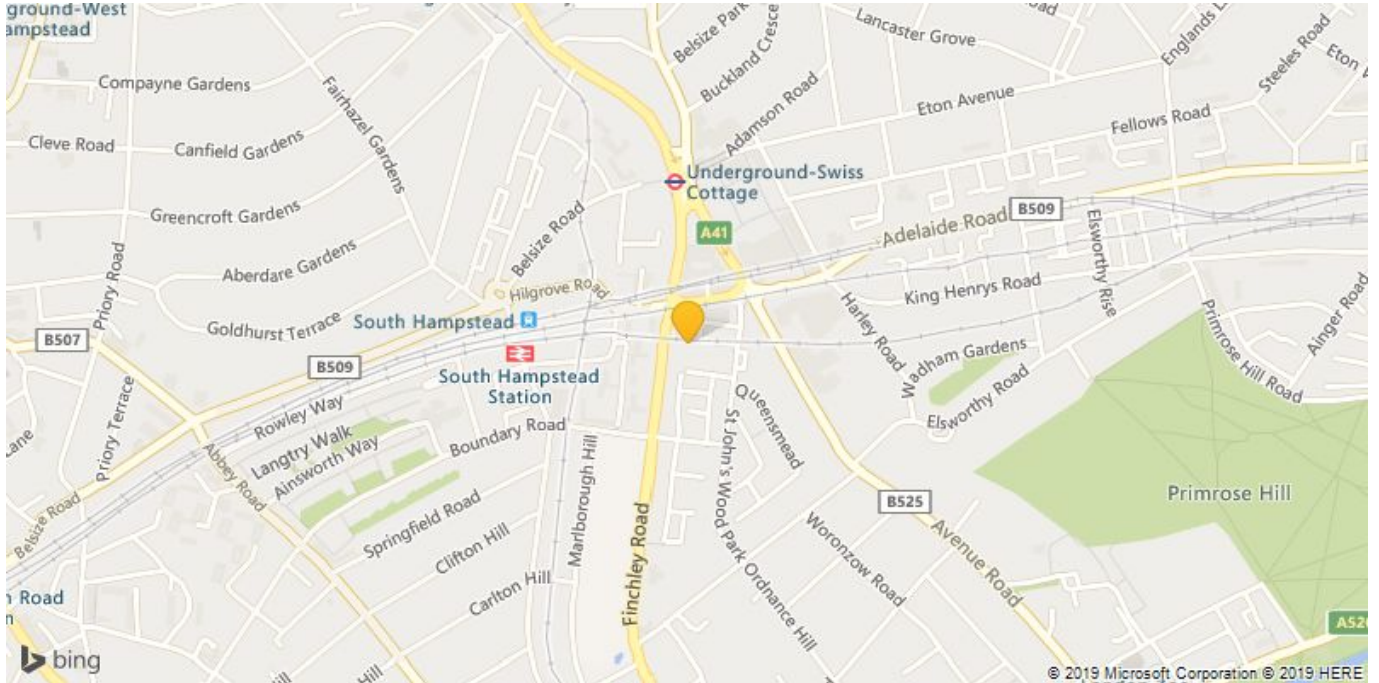
Call 020 7759 2199 to view this property, or visit [www.vitaproperties.co.uk](http://www.vitaproperties.co.uk) for more details

27 Northways Parade, College Crescent, London, NW3 5DN | T: 020 7759 2199 | E: [enquiries@vitaproperties.co.uk](mailto:enquiries@vitaproperties.co.uk)

We make all efforts to ensure this information is accurate, but we can't guarantee it.

# Boydell Court, St Johns Wood Park, London, NW8

Weekly Rental Of £1,100 Monthly Rental Of £4,767



Call 020 7759 2199 to view this property, or visit [www.vitaproperties.co.uk](http://www.vitaproperties.co.uk) for more details

27 Northways Parade, College Crescent, London, NW3 5DN | T: 020 7759 2199 | E: [enquiries@vitaproperties.co.uk](mailto:enquiries@vitaproperties.co.uk)

We make all efforts to ensure this information is accurate, but we can't guarantee it.