

Stanley Gardens, Westbourne Grove, London, W11

Weekly Rental Of £1,850 Monthly Rental Of £8,017



A truly unique and wonderful three bedroom apartment, occupying the top two floors, with direct access to a beautiful terrace.

Positioned on a hillside, the property has phenomenal far-reaching views at the rear over north west London. Internally, the property is cleverly arranged, making best use of the space and the views and an abundance of light, with a modern interior. There are three bedrooms and two bathrooms on the third floors. The flat further benefits access to Communal Gardens and the benefit of a private separate storage unit.

Stanley Gardens is positioned between Kensington Park Gardens and Ladbrooke Gardens in Notting Hill. The apartment is 0.4 miles from Notting Hill Gate Underground (Central Line, Circle Line & District Line). It also benefits from all the shopping and transport facilities of Westbourne Grove and Notting Hill Gate and it is close to a wide range of good local schools. It is also within easy reach of the West End, the city and Heathrow Airport.

- Westbourne Grove (6 minutes/0.3 miles)
- Notting Hill Gate (8 minutes/0.4 miles)
- Holland Park (8 minutes/0.4 miles)

- Bedrooms: 3
- Receptions : 1
- Bathrooms: 2
- Property Type: Flat
- Garden: Yes
- Centrally located
- Modern interior
- Includes Private Separate Storage Unit
- Available 01 November 2020

Call 020 7759 2199 to view this property, or visit www.vitaproperties.co.uk for more details

27 Northways Parade, College Crescent, London, NW3 5DN | T: 020 7759 2199 | E: enquiries@vitaproperties.co.uk

We make all efforts to ensure this information is accurate, but we can't guarantee it.

Stanley Gardens, Westbourne Grove, London, W11

Weekly Rental Of £1,850 Monthly Rental Of £8,017



- Ladbroke Grove (8 minutes/0.4 miles)
- Bayswater (14 minutes/0.7 miles)

Call 020 7759 2199 to view this property, or visit www.vitaproperties.co.uk for more details

27 Northways Parade, College Crescent, London, NW3 5DN | T: 020 7759 2199 | E: enquiries@vitaproperties.co.uk

We make all efforts to ensure this information is accurate, but we can't guarantee it.

Stanley Gardens, Westbourne Grove, London, W11

Weekly Rental Of £1,850 Monthly Rental Of £8,017



Call 020 7759 2199 to view this property, or visit www.vitaproperties.co.uk for more details

27 Northways Parade, College Crescent, London, NW3 5DN | T: 020 7759 2199 | E: enquiries@vitaproperties.co.uk

We make all efforts to ensure this information is accurate, but we can't guarantee it.

Stanley Gardens, Westbourne Grove, London, W11

Weekly Rental Of £1,850 Monthly Rental Of £8,017



Call 020 7759 2199 to view this property, or visit www.vitaproperties.co.uk for more details

27 Northways Parade, College Crescent, London, NW3 5DN | T: 020 7759 2199 | E: enquiries@vitaproperties.co.uk

We make all efforts to ensure this information is accurate, but we can't guarantee it.

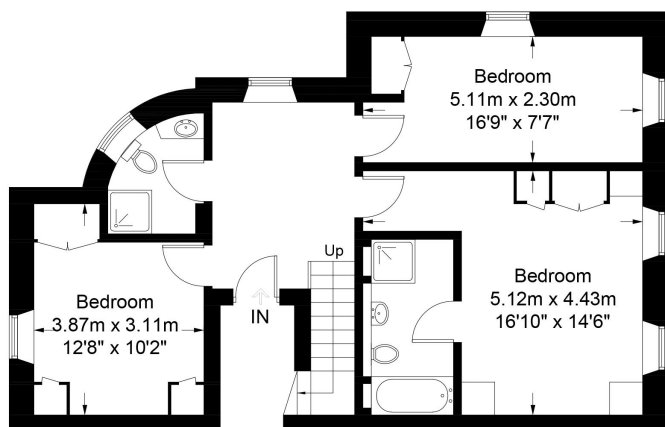
Stanley Gardens, Westbourne Grove, London, W11

Weekly Rental Of £1,850 Monthly Rental Of £8,017

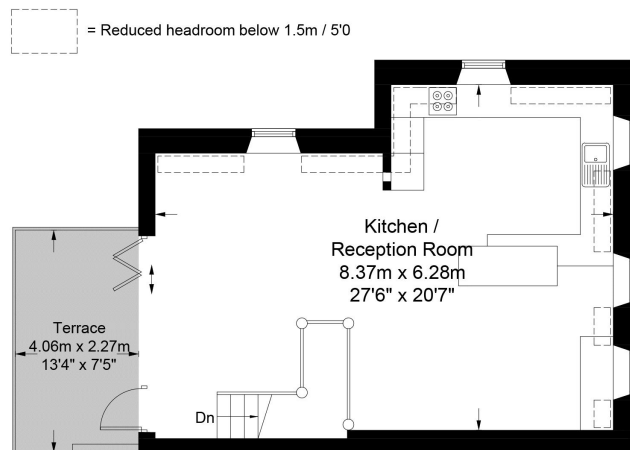


Stanley Gardens, W11

Approximate Gross Internal Area = 1184 sq ft / 110.0 sq m

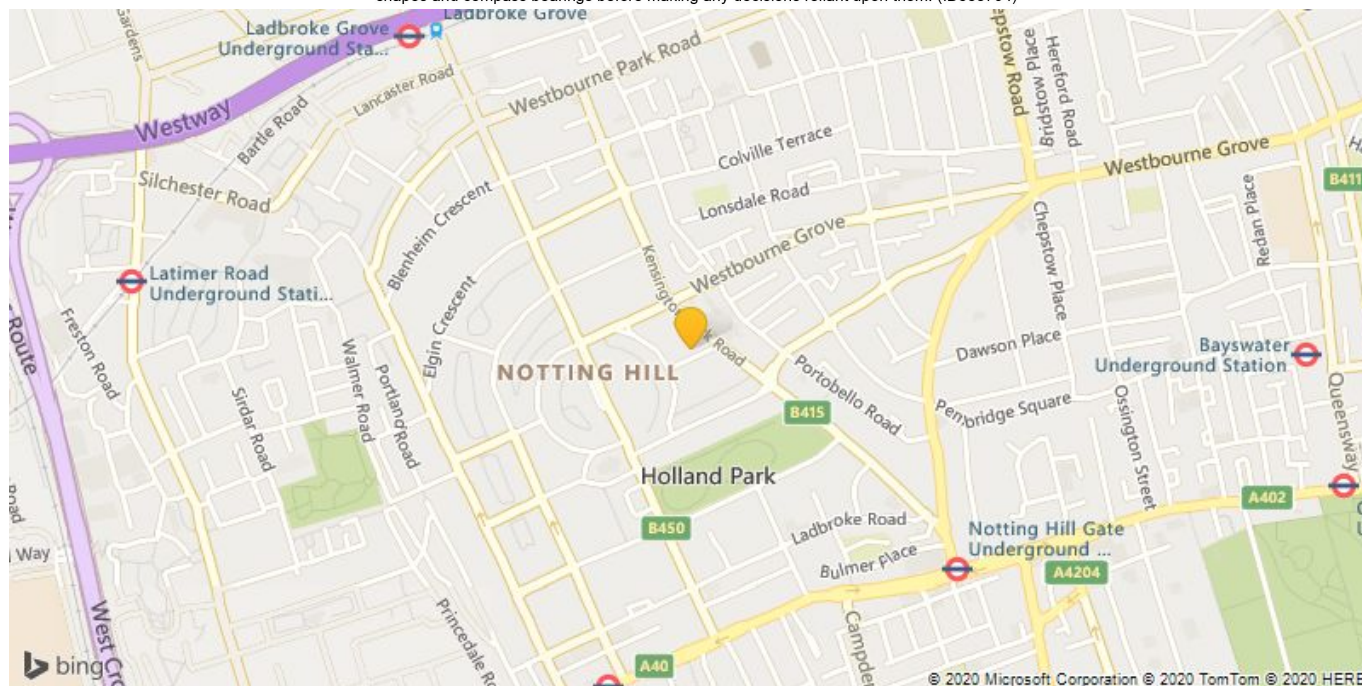


Third Floor



Fourth Floor

This plan is for layout guidance only. Not drawn to scale unless stated. Windows and door openings are approximate. Whilst every care is taken in the preparation of this plan, please check all dimensions, shapes and compass bearings before making any decisions reliant upon them. (ID583794)



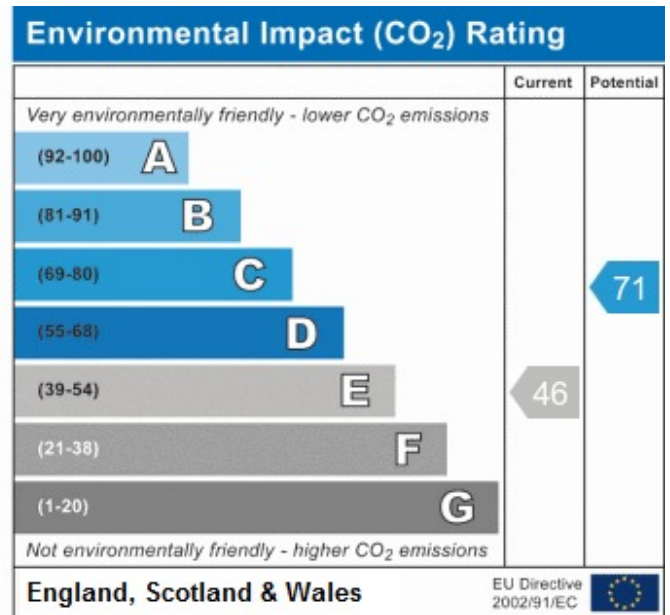
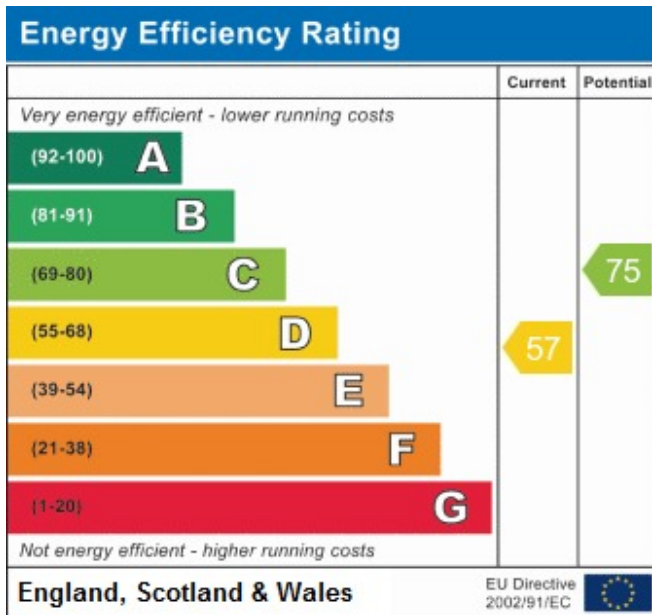
Call 020 7759 2199 to view this property, or visit www.vitaproperties.co.uk for more details

27 Northways Parade, College Crescent, London, NW3 5DN | T: 020 7759 2199 | E: enquiries@vitaproperties.co.uk

We make all efforts to ensure this information is accurate, but we can't guarantee it.

Stanley Gardens, Westbourne Grove, London, W11

Weekly Rental Of £1,850 Monthly Rental Of £8,017



Call 020 7759 2199 to view this property, or visit www.vitaproperties.co.uk for more details

27 Northways Parade, College Crescent, London, NW3 5DN | T: 020 7759 2199 | E: enquiries@vitaproperties.co.uk

We make all efforts to ensure this information is accurate, but we can't guarantee it.