

Exeter Mansions Exeter Road, Mapesbury, London, NW2

£615,000



Superb opportunity to acquire this beautifully presented FIRST FLOOR apartment situated within the highly sought after Mapesbury Conservation Area, set within this well maintained MANSION BLOCK offering 882sq ft of lateral space, The apartment comprises of: Modern fitted kitchen with tiled splashbacks, Spacious lounge-diner with oak flooring and access leading out onto large balcony, two equally large double bedrooms with fitted wardrobes "Master bedroom benefits from access onto balcony", tastefully tiled three piece bathroom. Further benefits include: Many original features to include fireplaces, high ceilings, New double glazed acoustic windows/doors throughout. Situated moments away from Kilburn (Jubilee) station & Brondesbury Overground Stations (Zone 2) and close to a variety of local shops, restaurants & cafes.

- Bedrooms: 2
- Receptions : 1
- Bathrooms: 1
- Property Type: Flat
- Two double bedrooms
- Spacious lounge/diner
- Modern kitchen
- Mansion block
- High ceilings
- Original features
- Superb location

- Kilburn (2 minutes/0.1 miles)
- Brondesbury (4 minutes/0.2 miles)
- West Hampstead (10 minutes/0.5 miles)
- Brondesbury Park (10 minutes/0.5 miles)
- Willesden Green (14 minutes/0.7 miles)

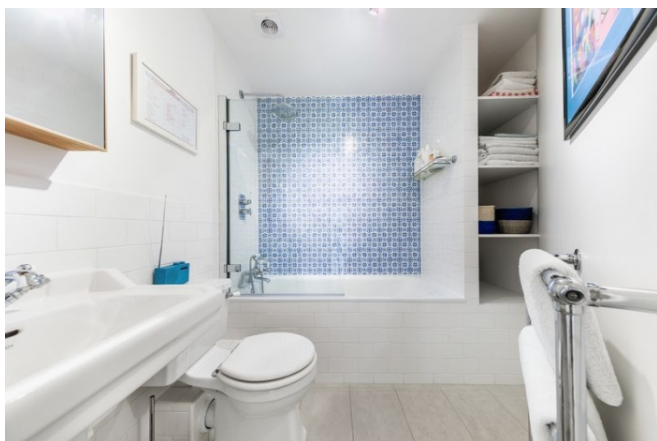
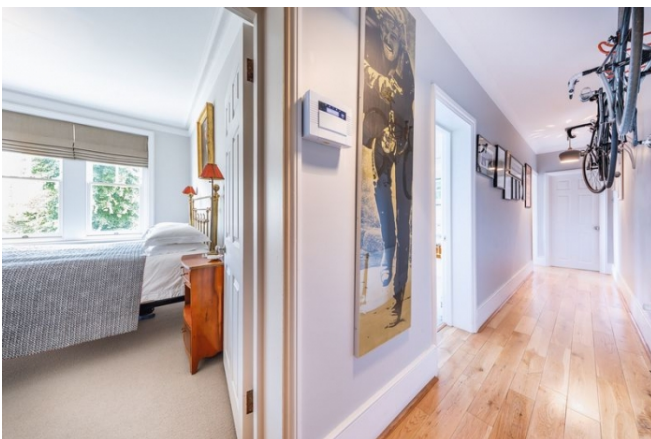
Call 020 7759 2199 to view this property, or visit www.vitaproperties.co.uk for more details

27 Northways Parade, College Crescent, London, NW3 5DN | T: 020 7759 2199 | E: enquiries@vitaproperties.co.uk

We make all efforts to ensure this information is accurate, but we can't guarantee it.

Exeter Mansions Exeter Road, Mapesbury, London, NW2

£615,000



Call 020 7759 2199 to view this property, or visit www.vitaproperties.co.uk for more details

27 Northways Parade, College Crescent, London, NW3 5DN | T: 020 7759 2199 | E: enquiries@vitaproperties.co.uk

We make all efforts to ensure this information is accurate, but we can't guarantee it.

Exeter Mansions Exeter Road, Mapesbury, London, NW2

£615,000



Call 020 7759 2199 to view this property, or visit www.vitaproperties.co.uk for more details

27 Northways Parade, College Crescent, London, NW3 5DN | T: 020 7759 2199 | E: enquiries@vitaproperties.co.uk

We make all efforts to ensure this information is accurate, but we can't guarantee it.

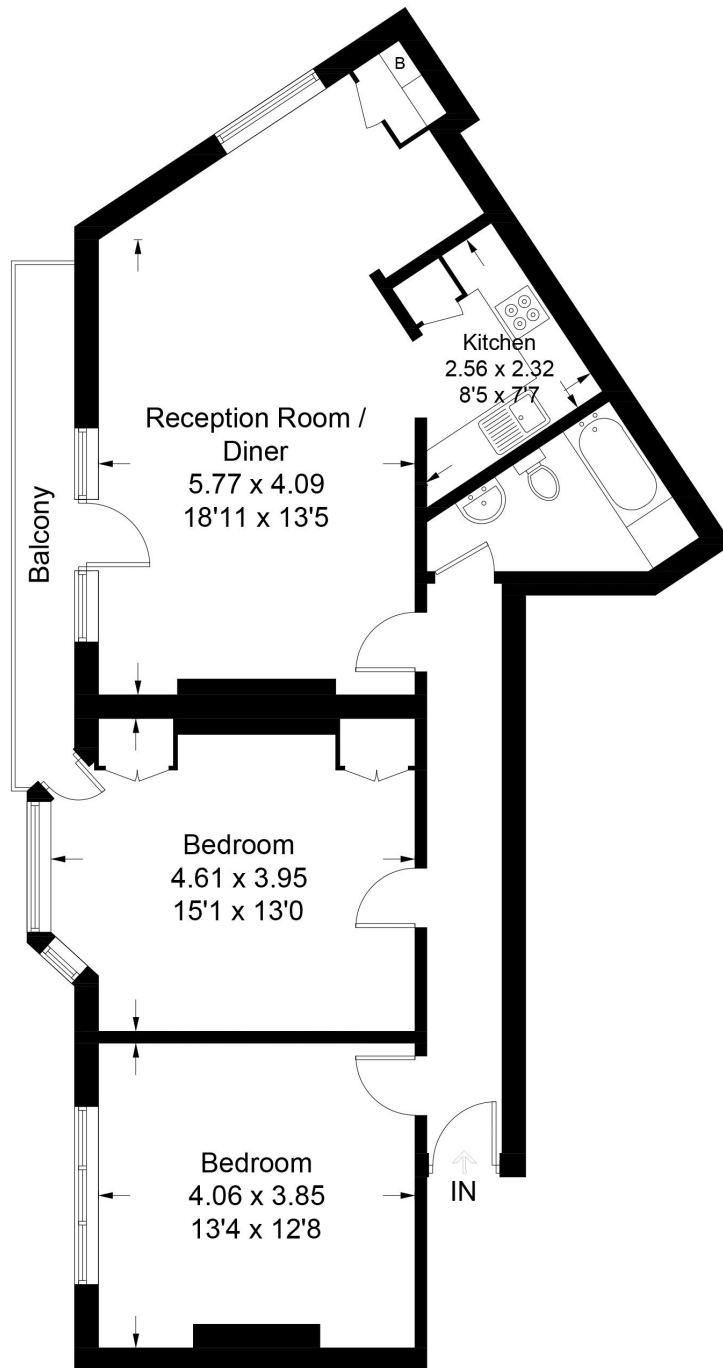
Exeter Mansions Exeter Road, Mapesbury,
London, NW2

£615,000



10A Exeter Mansions

Approximate Gross Internal Area = 82.3 sq m / 886 sq ft



First Floor

Illustration for identification purposes only, measurements are approximate,
not to scale. floorplansUsketch.com © (ID566464)

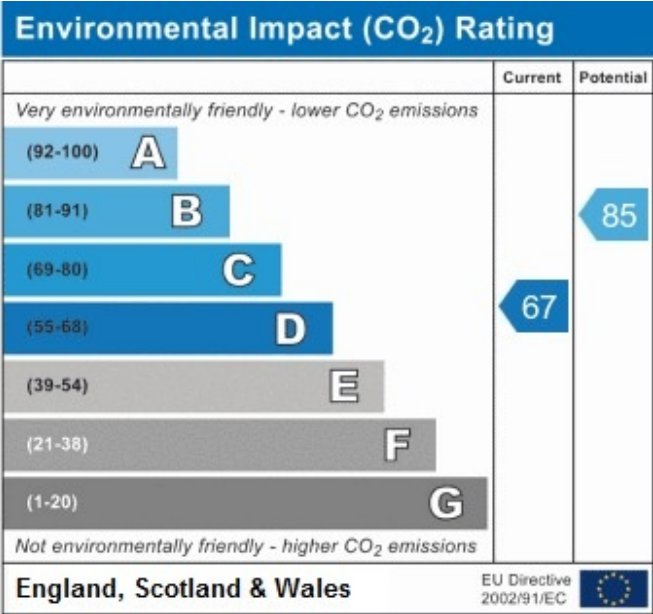
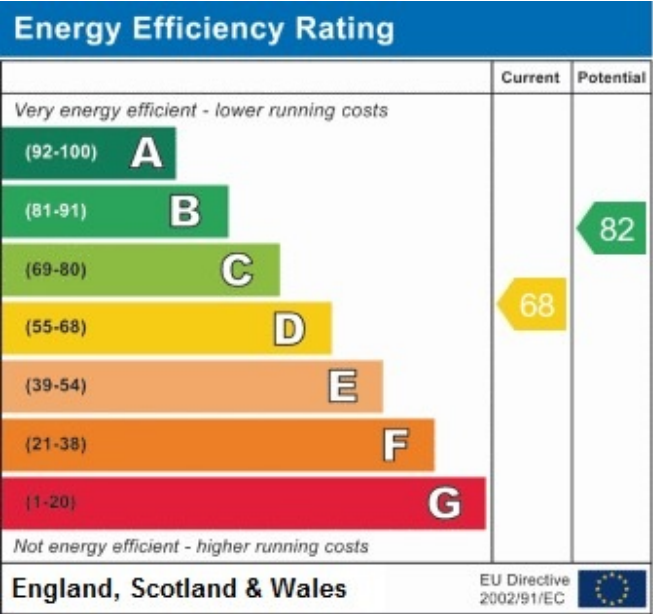
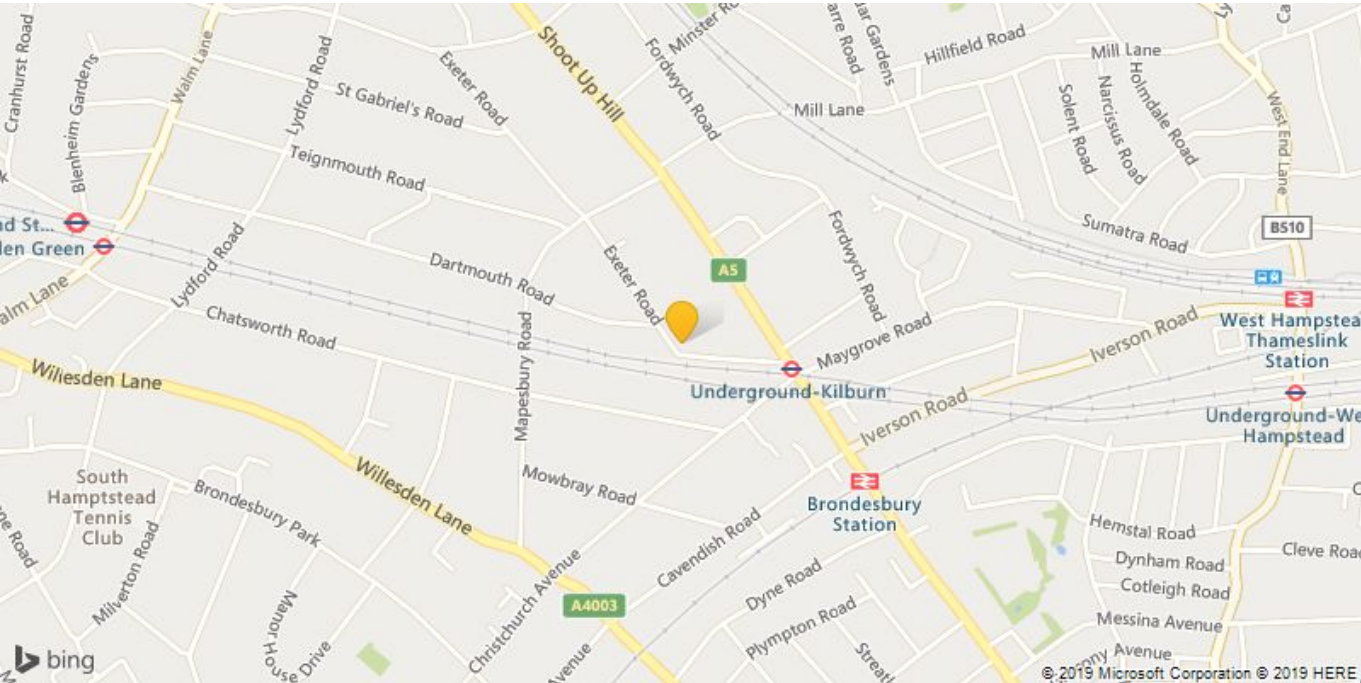
Call 020 7759 2199 to view this property, or visit www.vitaproperties.co.uk for more details

27 Northways Parade, College Crescent, London, NW3 5DN | T: 020 7759 2199 | E: enquiries@vitaproperties.co.uk

We make all efforts to ensure this information is accurate, but we can't guarantee it.

Exeter Mansions Exeter Road, Mapesbury, London, NW2

£615,000



Call 020 7759 2199 to view this property, or visit www.vitaproperties.co.uk for more details