

Finchley Road, Hampstead, London, NW3

Weekly Rental Of £365 Monthly Rental Of £1,582



We are delighted to bring to the market this modern 1 bedroom, ground floor apartment located within moments to all amenities of Hampstead, West Hampstead and Finchley Road.

Available Now, this beautifully designed apartment benefits from wood floors, a fully fitted kitchen inc dishwasher, a private terrace and communal gardens, Offered on a furnished or unfurnished basis

- Finchley Road & Frognal (8 minutes/0.4 miles)
- Hampstead (10 minutes/0.5 miles)
- West Hampstead (10 minutes/0.5 miles)
- Finchley Road (12 minutes/0.6 miles)
- Kilburn (16 minutes/0.8 miles)

- Bedrooms: 1
- Receptions : 1
- Bathrooms: 1
- Property Type: Flat
- Garden: Yes
- A brand new development
- Wooden floors throughout
- Moments to Hampstead and West Hampstead
- Fantastic transport links
- Available Now

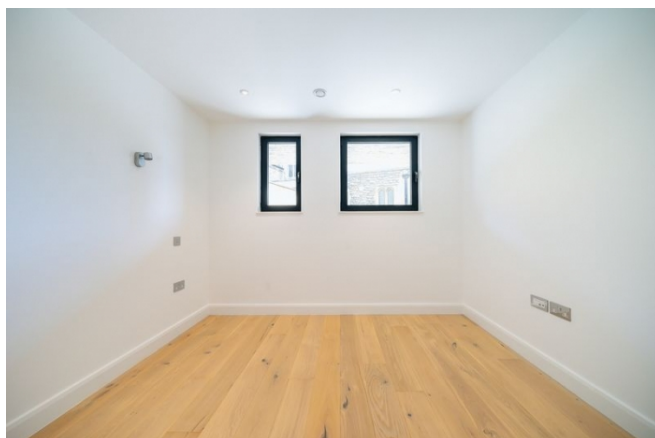
Call 020 7759 2199 to view this property, or visit www.vitaproperties.co.uk for more details

27 Northways Parade, College Crescent, London, NW3 5DN | T: 020 7759 2199 | E: enquiries@vitaproperties.co.uk

We make all efforts to ensure this information is accurate, but we can't guarantee it.

Finchley Road, Hampstead, London, NW3

Weekly Rental Of £365 Monthly Rental Of £1,582



Call 020 7759 2199 to view this property, or visit www.vitaproperties.co.uk for more details

27 Northways Parade, College Crescent, London, NW3 5DN | T: 020 7759 2199 | E: enquiries@vitaproperties.co.uk

We make all efforts to ensure this information is accurate, but we can't guarantee it.

Finchley Road, Hampstead, London, NW3

Weekly Rental Of £365 Monthly Rental Of £1,582



Call 020 7759 2199 to view this property, or visit www.vitaproperties.co.uk for more details

27 Northways Parade, College Crescent, London, NW3 5DN | T: 020 7759 2199 | E: enquiries@vitaproperties.co.uk

We make all efforts to ensure this information is accurate, but we can't guarantee it.

Finchley Road, Hampstead, London, NW3

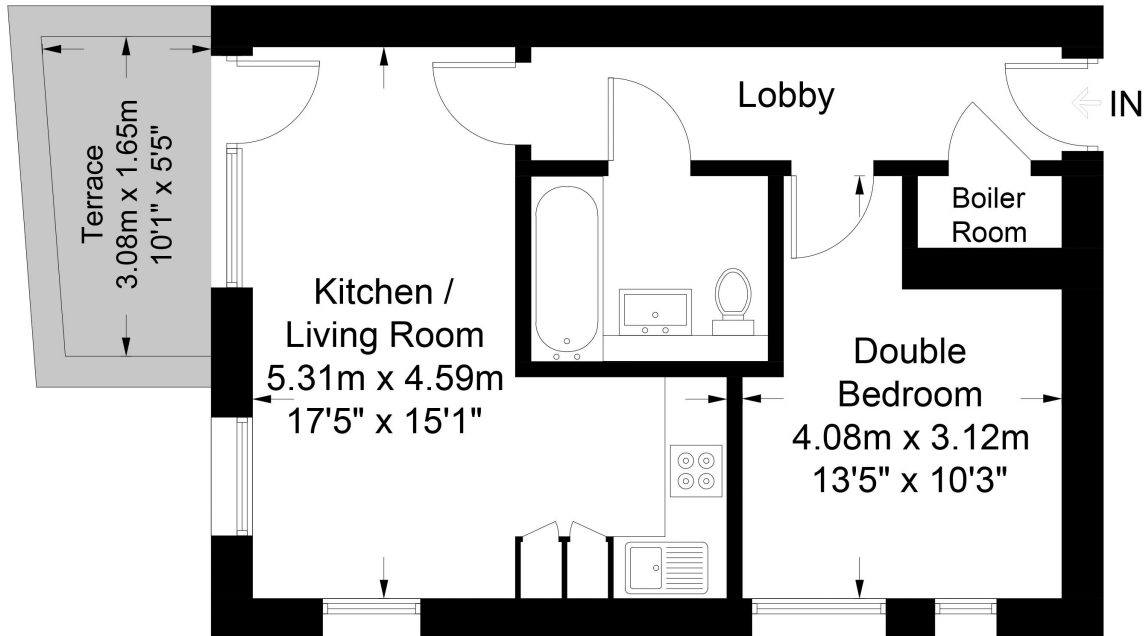
Weekly Rental Of £365 Monthly Rental Of £1,582



Finchley Road, NW3

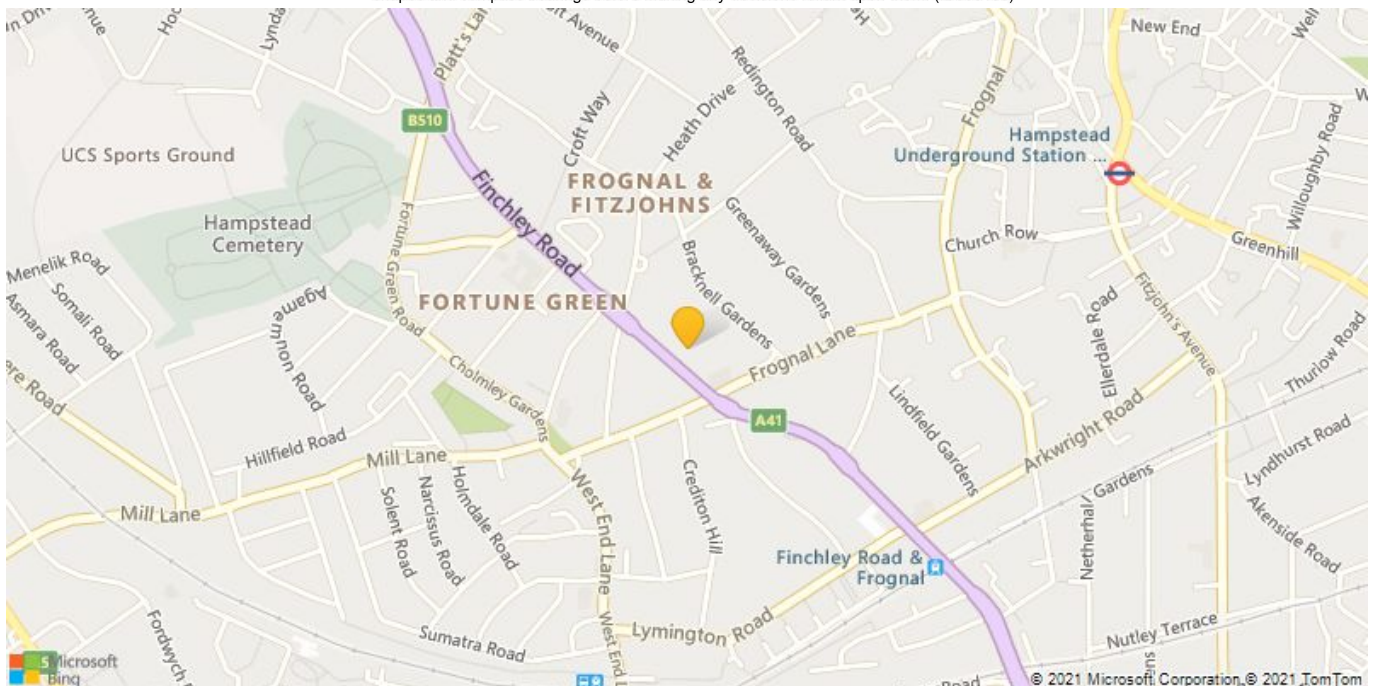


Approximate Gross Internal Area = 456 sq ft / 42.4 sq m



Ground Floor

This plan is for layout guidance only. Not drawn to scale unless stated. Windows and door openings are approximate. Whilst every care is taken in the preparation of this plan, please check all dimensions, shapes and compass bearings before making any decisions reliant upon them. (ID565158)



Call 020 7759 2199 to view this property, or visit www.vitaproperties.co.uk for more details

27 Northways Parade, College Crescent, London, NW3 5DN | T: 020 7759 2199 | E: enquiries@vitaproperties.co.uk

We make all efforts to ensure this information is accurate, but we can't guarantee it.