

# Cambridge Avenue, Kilburn Park, London, NW6

Weekly Rental Of £400 Monthly Rental Of £1,733



Presenting this modern two bed apartment which has been newly renovated with the highest level of care.

Comprising of an open-plan living room and fully implemented kitchen with lovely wood floors and an abundance of natural light, two double bedrooms and a modern, fully tiled bathroom. Further benefits include gorgeous sash windows and spot lighting throughout.

Ideally located less than a minutes walk from Kilburn Park Station (Bakerloo Line) as well as a number of local amenities.

- Kilburn Park (2 minutes/0.1 miles)
- Kilburn High Road (4 minutes/0.2 miles)
- Maida Vale (10 minutes/0.5 miles)
- South Hampstead (14 minutes/0.7 miles)
- St Johns Wood (16 minutes/0.8 miles)

- Bedrooms: 2
- Receptions : 1
- Bathrooms: 1
- Property Type: Flat
- Two Bed, One Bath
- Newly Renovated
- Abundance of Natural Light
- Excellent Transport Links
- Available immediately

Call 020 7759 2199 to view this property, or visit [www.vitaproperties.co.uk](http://www.vitaproperties.co.uk) for more details

27 Northways Parade, College Crescent, London, NW3 5DN | T: 020 7759 2199 | E: [enquiries@vitaproperties.co.uk](mailto:enquiries@vitaproperties.co.uk)

We make all efforts to ensure this information is accurate, but we can't guarantee it.

# Cambridge Avenue, Kilburn Park, London, NW6

Weekly Rental Of £400 Monthly Rental Of £1,733



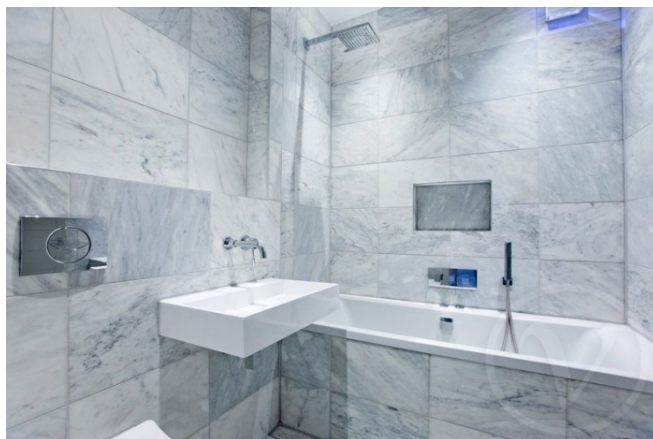
Call 020 7759 2199 to view this property, or visit [www.vitaproperties.co.uk](http://www.vitaproperties.co.uk) for more details

27 Northways Parade, College Crescent, London, NW3 5DN | T: 020 7759 2199 | E: [enquiries@vitaproperties.co.uk](mailto:enquiries@vitaproperties.co.uk)

We make all efforts to ensure this information is accurate, but we can't guarantee it.

# Cambridge Avenue, Kilburn Park, London, NW6

Weekly Rental Of £400 Monthly Rental Of £1,733



Call 020 7759 2199 to view this property, or visit [www.vitaproperties.co.uk](http://www.vitaproperties.co.uk) for more details

27 Northways Parade, College Crescent, London, NW3 5DN | T: 020 7759 2199 | E: [enquiries@vitaproperties.co.uk](mailto:enquiries@vitaproperties.co.uk)

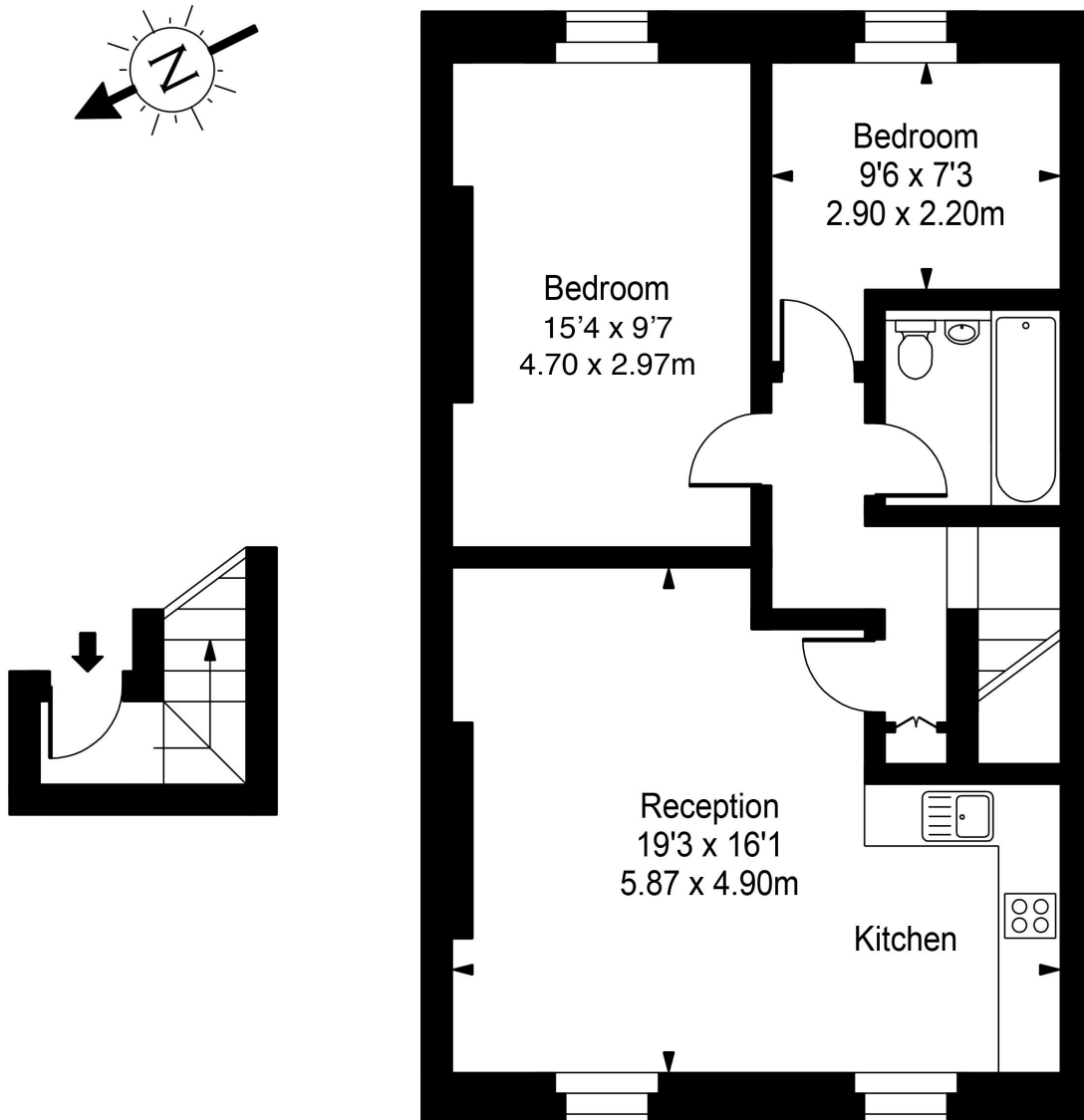
We make all efforts to ensure this information is accurate, but we can't guarantee it.

Cambridge Avenue, Kilburn Park, London,  
NW6

Weekly Rental Of £400 Monthly Rental Of £1,733



## Cambridge Avenue



Approx Gross Internal Area **640 Sq Ft - 59.46 Sq M**

FOR ILLUSTRATIVE PURPOSES ONLY. NOT TO SCALE.

Whilst every attempt has been made to ensure the accuracy of the floorplan shown, all measurements, positioning, fixtures, fittings and any other data shown are an approximate interpretation for illustrative purposes only and are not to scale. No responsibility is taken for any error, omission, misstatement or use of data shown.

Floor plan by [www.bestangle.co.uk](http://www.bestangle.co.uk)

Call 020 7759 2199 to view this property, or visit [www.vitaproperties.co.uk](http://www.vitaproperties.co.uk) for more details

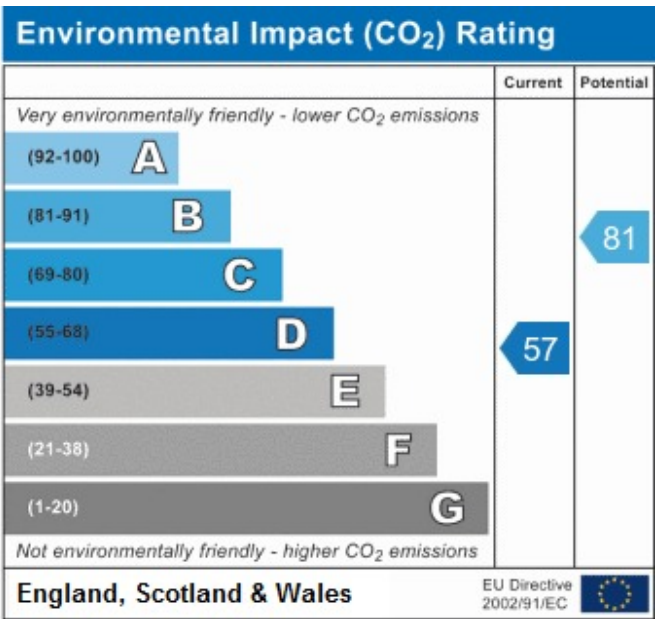
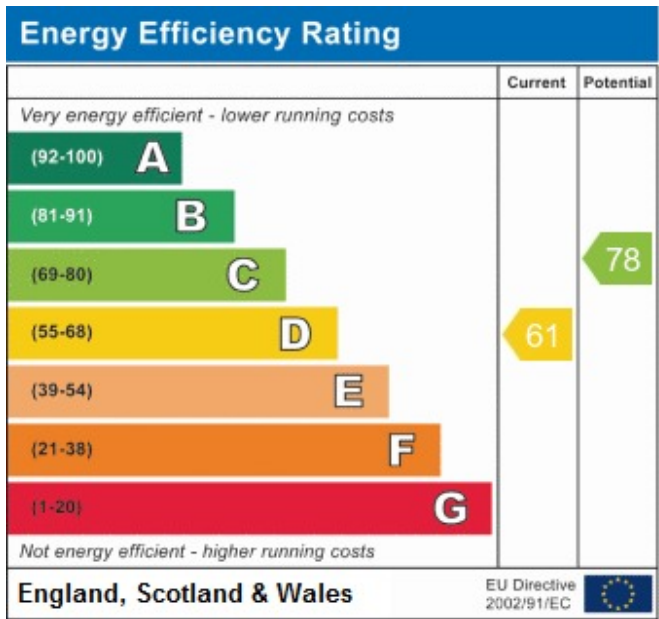
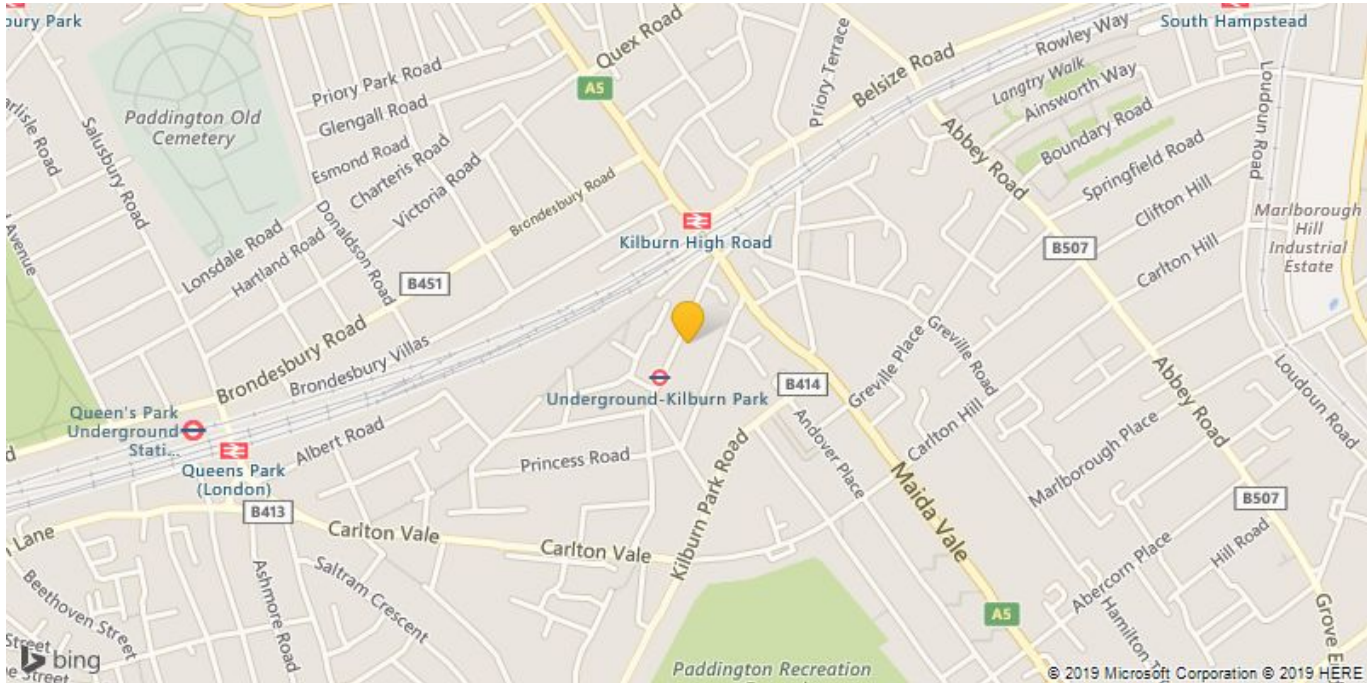
27 Northways Parade, College Crescent, London, NW3 5DN | T: 020 7759 2199 | E: [enquiries@vitaproperties.co.uk](mailto:enquiries@vitaproperties.co.uk)

We make all efforts to ensure this information is accurate, but we can't guarantee it.



# Cambridge Avenue, Kilburn Park, London, NW6

Weekly Rental Of £400 Monthly Rental Of £1,733



Call 020 7759 2199 to view this property, or visit [www.vitaproperties.co.uk](http://www.vitaproperties.co.uk) for more details