

# Alma Square, St Johns Wood, London, NW8

Weekly Rental Of £3,970 Monthly Rental Of £17,203



01 February 2022 - Presenting this incredible five bed terraced house to rent in the heart of St Johns Wood that has recently been refurbished to the highest of standards.

Set across five floors and boasting an impressive 3109 sq ft of living space, this property has a lot to offer. Offering three reception rooms, a large fully integrated kitchen with breakfast bar and high specification Siemens appliances, separate breakfast room, three double bedrooms (with en-suite access), two further double bedrooms, two WC's, utility room and two large terraces. This property has been fully modernized and boasts a surround sound speaker system & air conditioning throughout. Additionally residents will benefit from the use of well manicured communal gardens.

Set on a quaint residential road and ideally situated for local amenities and transport links. Within walking distance to both Little Venice & Maida Vale.

- Maida Vale (4 minutes/0.2 miles)
- St Johns Wood (8 minutes/0.4 miles)
- Kilburn Park (12 minutes/0.6 miles)
- South Hampstead (14 minutes/0.7 miles)
- Kilburn High Road (14 minutes/0.7 miles)

- Bedrooms: 5+
- Receptions : 3
- Bathrooms: 4
- Property Type: House
- Garden: Yes
- Terraced House
- Set Across Five Floors
- High Specification
- Available 01 February 2022

Call 020 7759 2199 to view this property, or visit [www.vitaproperties.co.uk](http://www.vitaproperties.co.uk) for more details

27 Northways Parade, College Crescent, London, NW3 5DN | T: 020 7759 2199 | E: [enquiries@vitaproperties.co.uk](mailto:enquiries@vitaproperties.co.uk)

We make all efforts to ensure this information is accurate, but we can't guarantee it.

# Alma Square, St Johns Wood, London, NW8

Weekly Rental Of £3,970 Monthly Rental Of £17,203



Call 020 7759 2199 to view this property, or visit [www.vitaproperties.co.uk](http://www.vitaproperties.co.uk) for more details

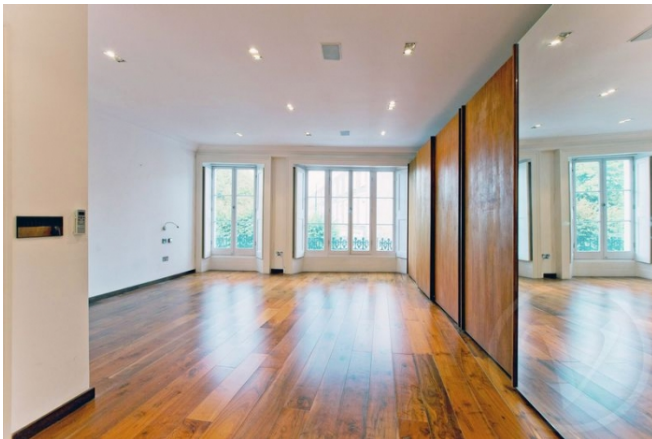
27 Northways Parade, College Crescent, London, NW3 5DN | T: 020 7759 2199 | E: [enquiries@vitaproperties.co.uk](mailto:enquiries@vitaproperties.co.uk)

We make all efforts to ensure this information is accurate, but we can't guarantee it.



# Alma Square, St Johns Wood, London, NW8

Weekly Rental Of £3,970 Monthly Rental Of £17,203



Call 020 7759 2199 to view this property, or visit [www.vitaproperties.co.uk](http://www.vitaproperties.co.uk) for more details

27 Northways Parade, College Crescent, London, NW3 5DN | T: 020 7759 2199 | E: [enquiries@vitaproperties.co.uk](mailto:enquiries@vitaproperties.co.uk)

We make all efforts to ensure this information is accurate, but we can't guarantee it.



# Alma Square, St Johns Wood, London, NW8

Weekly Rental Of £3,970 Monthly Rental Of £17,203



Call 020 7759 2199 to view this property, or visit [www.vitaproperties.co.uk](http://www.vitaproperties.co.uk) for more details

27 Northways Parade, College Crescent, London, NW3 5DN | T: 020 7759 2199 | E: [enquiries@vitaproperties.co.uk](mailto:enquiries@vitaproperties.co.uk)

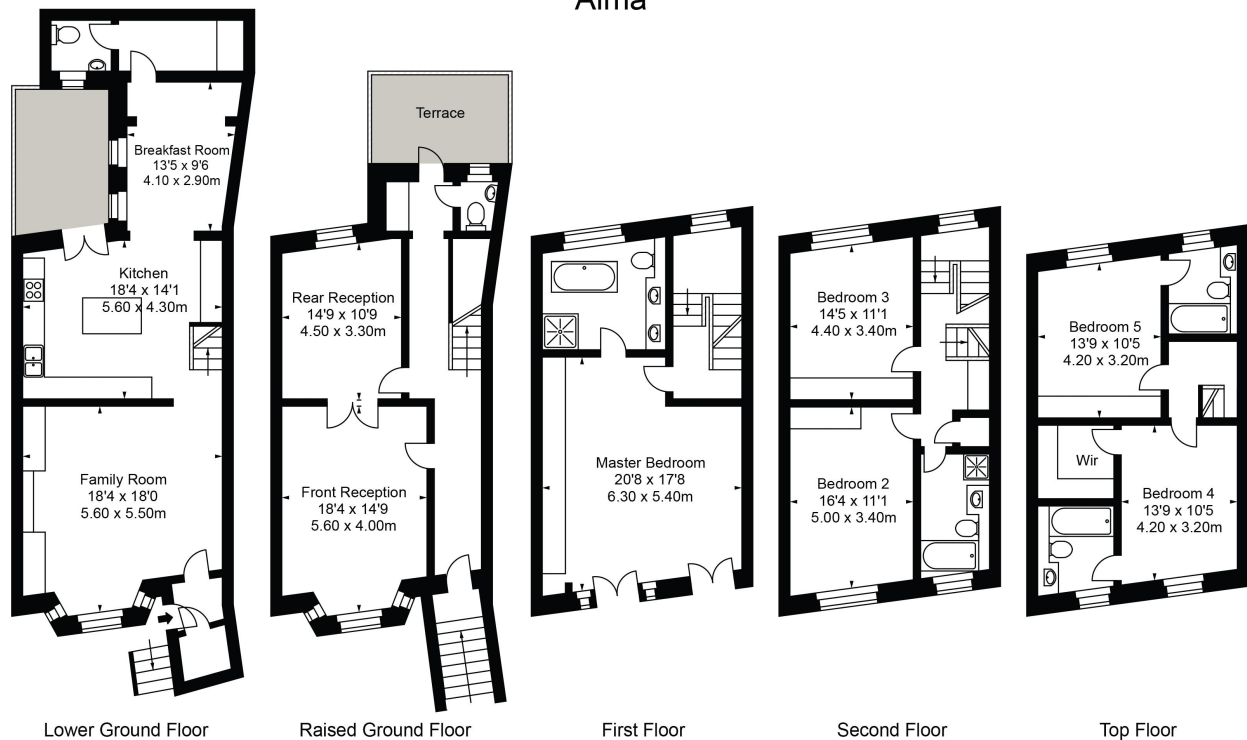
We make all efforts to ensure this information is accurate, but we can't guarantee it.

# Alma Square, St Johns Wood, London, NW8

Weekly Rental Of £3,970 Monthly Rental Of £17,203



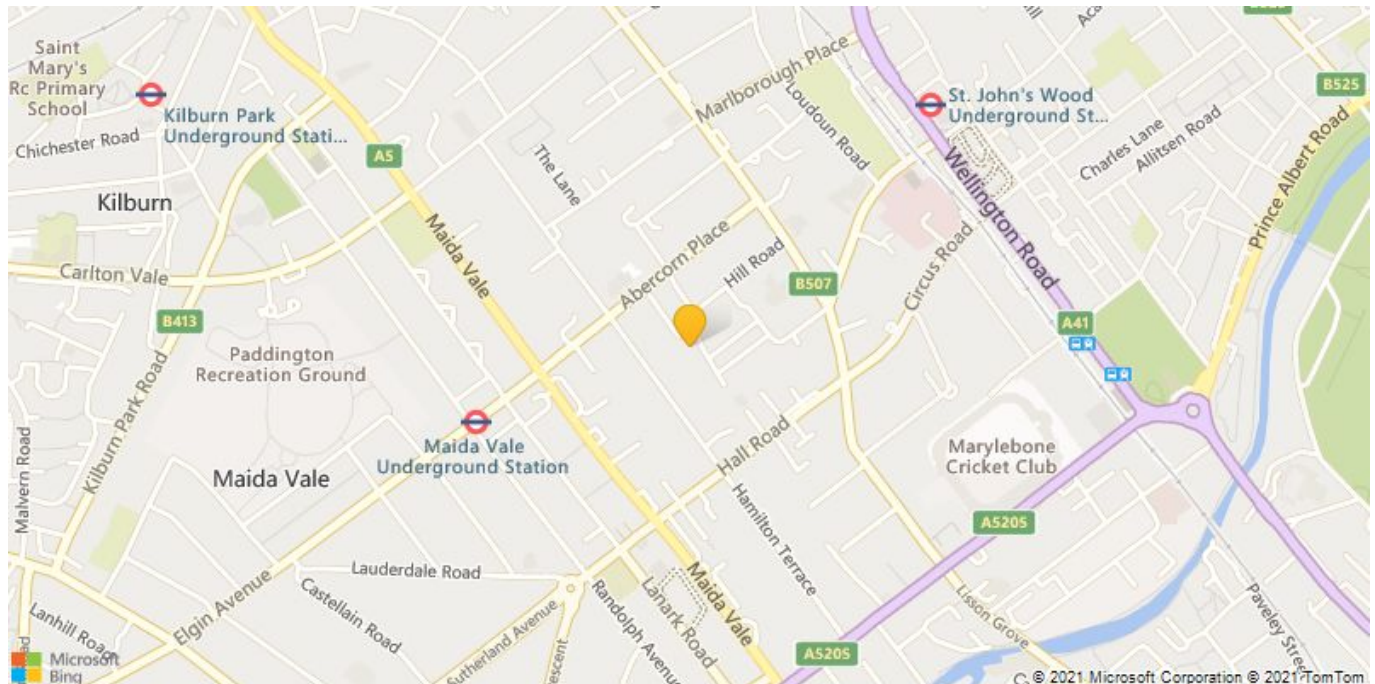
## Alma



Approx Gross Internal Area **3109 Sq Ft - 288.79 Sq M**

FOR ILLUSTRATIVE PURPOSES ONLY. NOT TO SCALE.

Whilst every attempt has been made to ensure the accuracy of the floorplan shown, all measurements, positioning, fixtures, fittings and any other data shown are an approximate interpretation for illustrative purposes only and are not to scale. No responsibility is taken for any error, omission, misstatement or use of data shown. Floor plan by [www.bestangle.co.uk](http://www.bestangle.co.uk)



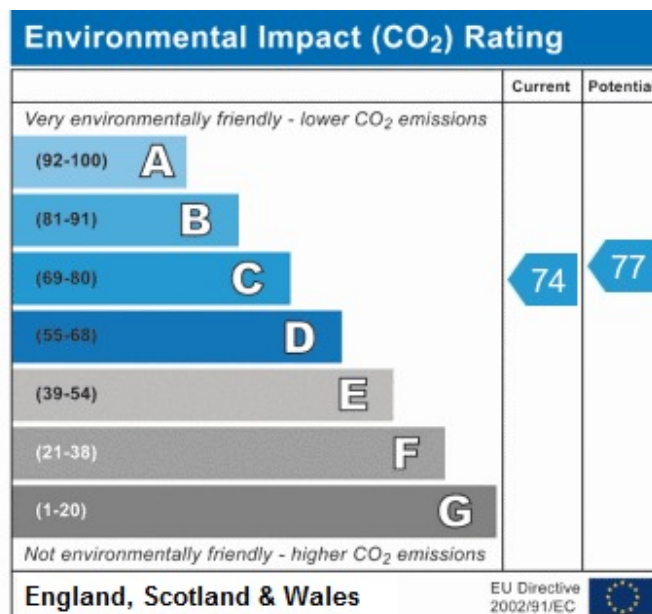
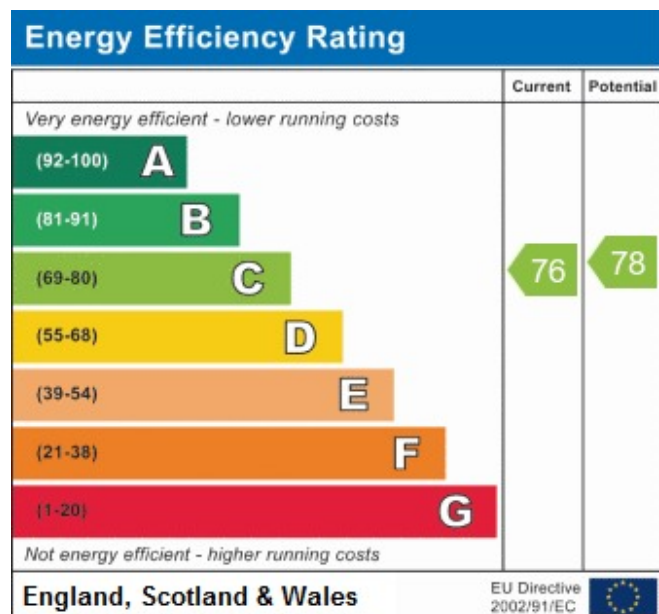
Call 020 7759 2199 to view this property, or visit [www.vitaproperties.co.uk](http://www.vitaproperties.co.uk) for more details

27 Northways Parade, College Crescent, London, NW3 5DN | T: 020 7759 2199 | E: [enquiries@vitaproperties.co.uk](mailto:enquiries@vitaproperties.co.uk)

We make all efforts to ensure this information is accurate, but we can't guarantee it.

# Alma Square, St Johns Wood, London, NW8

Weekly Rental Of £3,970 Monthly Rental Of £17,203



Call 020 7759 2199 to view this property, or visit [www.vitaproperties.co.uk](http://www.vitaproperties.co.uk) for more details

27 Northways Parade, College Crescent, London, NW3 5DN | T: 020 7759 2199 | E: [enquiries@vitaproperties.co.uk](mailto:enquiries@vitaproperties.co.uk)

We make all efforts to ensure this information is accurate, but we can't guarantee it.