

# Salisbury Road, Queens Park, London, NW6

£329,999



A stylish studio/ one bed apartment set in the heart of Queen's Park, NW6. Just moments from Queen's Park Station, Brondesbury Park Station, Kilburn Park Underground and a vast array of local amenities.

Set on the second floor this property offers a living area with sliding doors into the sleeping area, a fully implemented kitchen and bathroom.

- Brondesbury Park (8 minutes/0.4 miles)
- Kilburn Park (10 minutes/0.5 miles)
- Kilburn High Road (12 minutes/0.6 miles)
- Brondesbury (14 minutes/0.7 miles)
- Kilburn (16 minutes/0.8 miles)

- Bedrooms: 1
- Receptions : 1
- Bathrooms: 1
- Property Type: Flat
- Second Floor
- Long Lease
- Good Condition
- Great Transport Links
- Local Amenities

Call 020 7759 2199 to view this property, or visit [www.vitaproperties.co.uk](http://www.vitaproperties.co.uk) for more details

27 Northways Parade, College Crescent, London, NW3 5DN | T: 020 7759 2199 | E: [enquiries@vitaproperties.co.uk](mailto:enquiries@vitaproperties.co.uk)

We make all efforts to ensure this information is accurate, but we can't guarantee it.

# Salisbury Road, Queens Park, London, NW6

£329,999



Call 020 7759 2199 to view this property, or visit [www.vitaproperties.co.uk](http://www.vitaproperties.co.uk) for more details

27 Northways Parade, College Crescent, London, NW3 5DN | T: 020 7759 2199 | E: [enquiries@vitaproperties.co.uk](mailto:enquiries@vitaproperties.co.uk)

We make all efforts to ensure this information is accurate, but we can't guarantee it.

Salisbury Road, Queens Park, London,  
NW6

£329,999



Call 020 7759 2199 to view this property, or visit [www.vitaproperties.co.uk](http://www.vitaproperties.co.uk) for more details

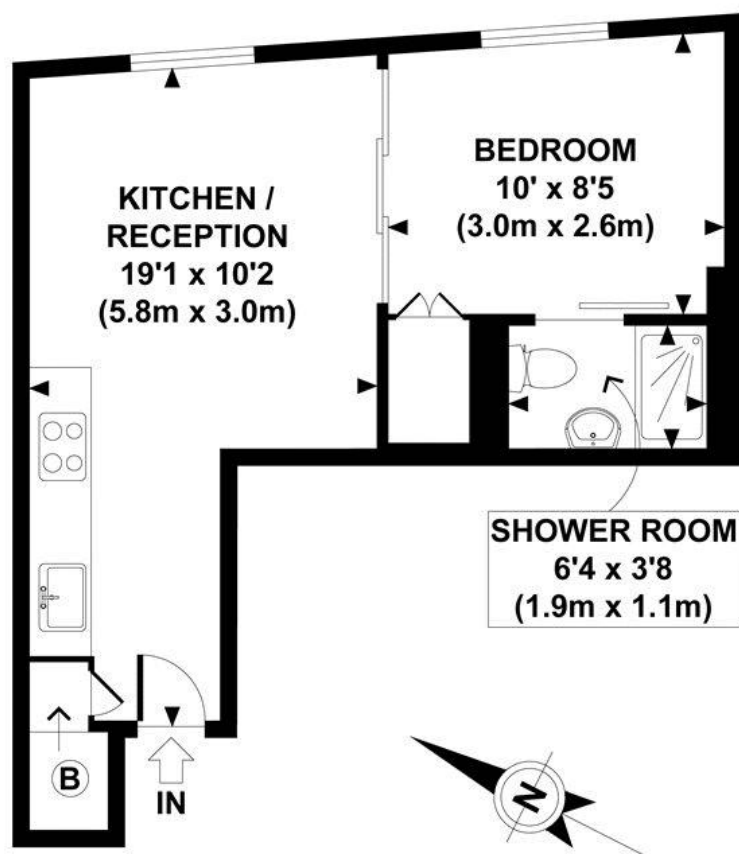
27 Northways Parade, College Crescent, London, NW3 5DN | T: 020 7759 2199 | E: [enquiries@vitaproperties.co.uk](mailto:enquiries@vitaproperties.co.uk)

We make all efforts to ensure this information is accurate, but we can't guarantee it.



Salisbury Road, Queens Park, London,  
NW6

£329,999



**SECOND FLOOR  
GROSS INTERNAL  
FLOOR AREA 295 SQ FT**

**APPROX. GROSS INTERNAL FLOOR AREA 295 SQ FT / 27 SQ M**  
GCWH - 060510

Copyright **photoplan.co.uk**

**Floorplans are for identification and guideline purposes only, not to scale.  
Compliant with RICS code of measuring practice.**

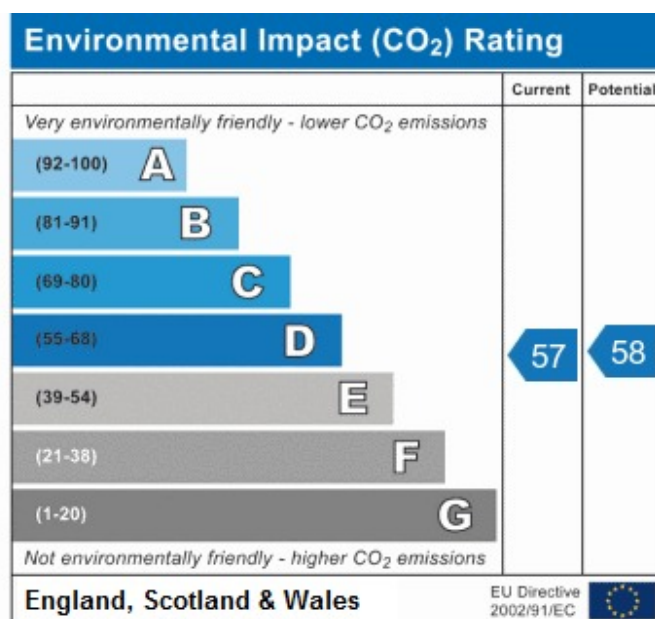
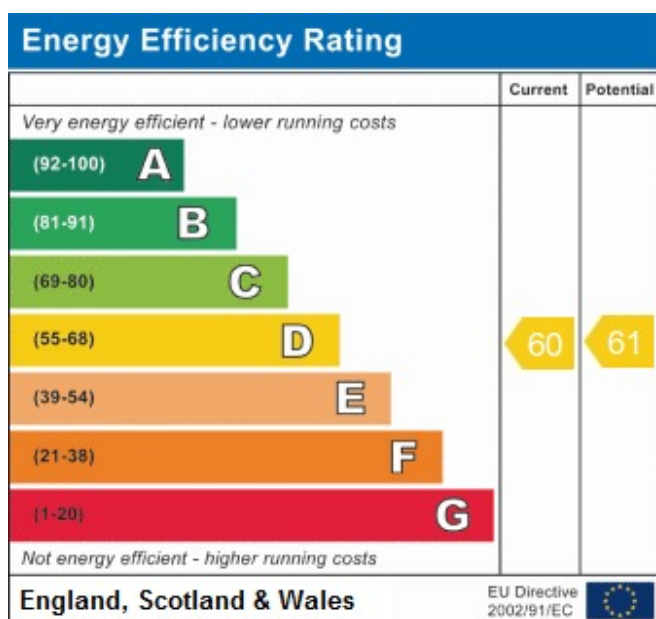
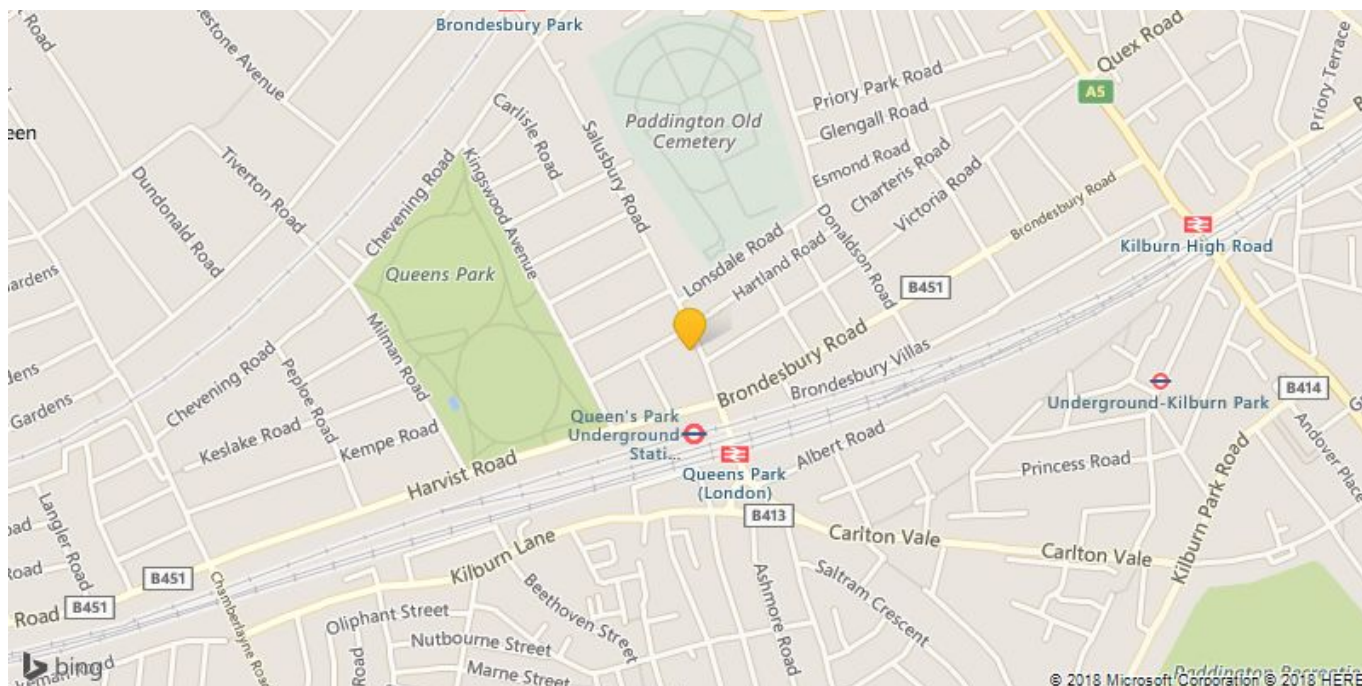
Call 020 7759 2199 to view this property, or visit [www.vitaproperties.co.uk](http://www.vitaproperties.co.uk) for more details

27 Northways Parade, College Crescent, London, NW3 5DN | T: 020 7759 2199 | E: [enquiries@vitaproperties.co.uk](mailto:enquiries@vitaproperties.co.uk)

We make all efforts to ensure this information is accurate, but we can't guarantee it.

# Salisbury Road, Queens Park, London, NW6

£329,999



Call 020 7759 2199 to view this property, or visit [www.vitaproperties.co.uk](http://www.vitaproperties.co.uk) for more details

27 Northways Parade, College Crescent, London, NW3 5DN | T: 020 7759 2199 | E: [enquiries@vitaproperties.co.uk](mailto:enquiries@vitaproperties.co.uk)

We make all efforts to ensure this information is accurate, but we can't guarantee it.