

Fairfax Place, South Hampstead, London, NW6

Weekly Rental Of £525 Monthly Rental Of £2,275



Set across three floors is this delightful mews house based on Fairfax Place, South Hampstead.

This property is in excellent decorative condition and is offered part furnished. As you enter onto the ground floor you have the study directly ahead and the stairs leading up to the well presented living area, featuring lots of natural light, hardwood floors and spot lighting. Also on this floor you will find the separate kitchen, large family bathroom and the first of the two double bedrooms, this one containing useful built in wardrobes. Upstairs you have the second double bedroom and cleverly implemented storage space.

Set on a idyllic residential street made up of similar mews houses this property is ideally located for both Swiss Cottage Station (Jubilee Line) and South Hampstead Station (Overground) and all the shops, restaurants and general amenities of Finchley Road and Belsize Road.

- South Hampstead (2 minutes/0.1 miles)
- Swiss Cottage (4 minutes/0.2 miles)
- Finchley Road (6 minutes/0.3 miles)

- Bedrooms: 2
- Receptions : 2
- Bathrooms: 1
- Property Type: House
- Mews House
- Two Double Bedrooms
- Separate Study
- Quiet Residential Street
- Great Transport Links and General Amenities
- Available 20th April

Call 020 7759 2199 to view this property, or visit www.vitaproperties.co.uk for more details

27 Northways Parade, College Crescent, London, NW3 5DN | T: 020 7759 2199 | E: enquiries@vitaproperties.co.uk

We make all efforts to ensure this information is accurate, but we can't guarantee it.

Fairfax Place, South Hampstead, London, NW6

Weekly Rental Of £525 Monthly Rental Of £2,275



- Finchley Road & Frognal (10 minutes/0.5 miles)
- Kilburn High Road (12 minutes/0.6 miles)

Call 020 7759 2199 to view this property, or visit www.vitaproperties.co.uk for more details

27 Northways Parade, College Crescent, London, NW3 5DN | T: 020 7759 2199 | E: enquiries@vitaproperties.co.uk

We make all efforts to ensure this information is accurate, but we can't guarantee it.

Fairfax Place, South Hampstead, London, NW6

Weekly Rental Of £525 Monthly Rental Of £2,275



Call 020 7759 2199 to view this property, or visit www.vitaproperties.co.uk for more details

27 Northways Parade, College Crescent, London, NW3 5DN | T: 020 7759 2199 | E: enquiries@vitaproperties.co.uk

We make all efforts to ensure this information is accurate, but we can't guarantee it.

Fairfax Place, South Hampstead, London, NW6

Weekly Rental Of £525 Monthly Rental Of £2,275



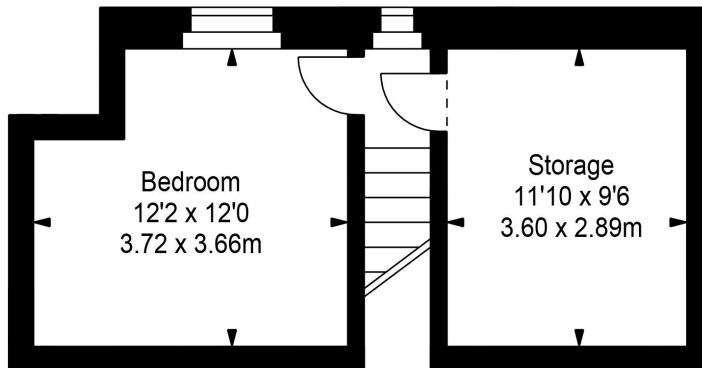
Call 020 7759 2199 to view this property, or visit www.vitaproperties.co.uk for more details

27 Northways Parade, College Crescent, London, NW3 5DN | T: 020 7759 2199 | E: enquiries@vitaproperties.co.uk

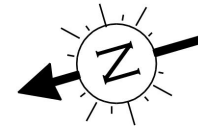
We make all efforts to ensure this information is accurate, but we can't guarantee it.

Fairfax Place, South Hampstead, London, NW6

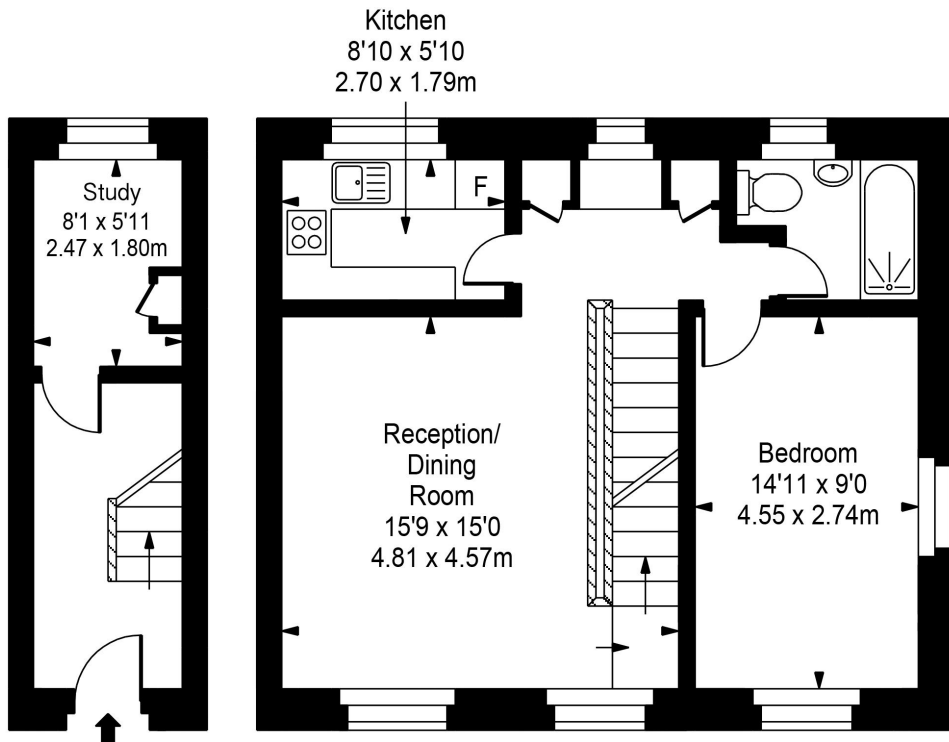
Weekly Rental Of £525 Monthly Rental Of £2,275



Fairfax Place



Second Floor



Ground Floor

First Floor



Approx Gross Internal Area **876 Sq Ft - 81.36 Sq M**
(Excluding Storage)

FOR ILLUSTRATIVE PURPOSES ONLY. NOT TO SCALE.

Whilst every attempt has been made to ensure the accuracy of the floorplan shown, all measurements, positioning, fixtures, fittings and any other data shown are an approximate interpretation for illustrative purposes only and are not to scale. No responsibility is taken for any error, omission, miss-statement or use of data shown. Floor plan by www.bestangle.co.uk

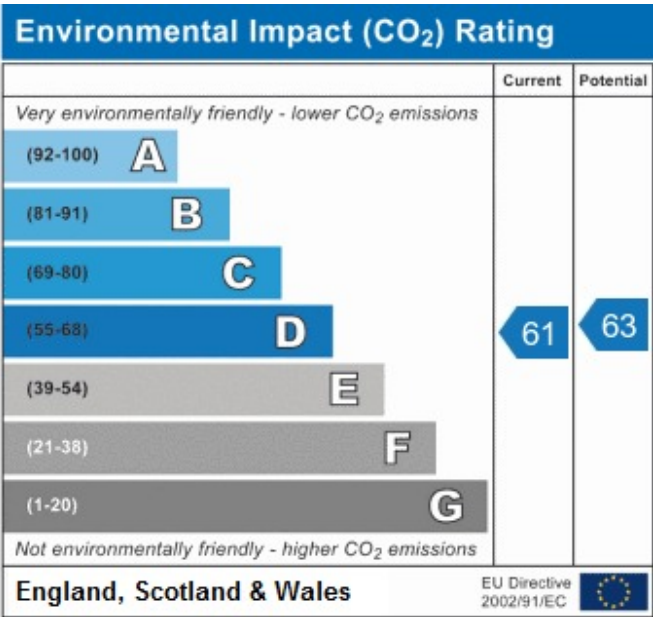
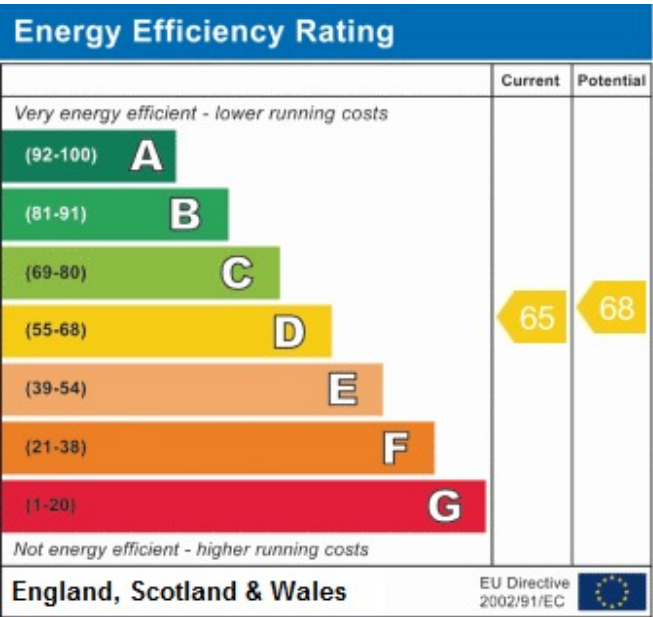
Call 020 7759 2199 to view this property, or visit www.vitaproperties.co.uk for more details

27 Northways Parade, College Crescent, London, NW3 5DN | T: 020 7759 2199 | E: enquiries@vitaproperties.co.uk

We make all efforts to ensure this information is accurate, but we can't guarantee it.

Fairfax Place, South Hampstead, London, NW6

Weekly Rental Of £525Monthly Rental Of £2,275



Call 020 7759 2199 to view this property, or visit www.vitaproperties.co.uk for more details