

Boydell Court, St Johns Wood Park, London, NW8

Weekly Rental Of £995 Monthly Rental Of £4,312



A beautifully presented three bedroom (1111 Sq Ft) 4th floor apartment situated in this well maintained purpose built block with 24 hour portage. The property has been refurbished to the highest standard and boasts a dual aspect reception room with London views. Boydell Court is located within close proximity to the local amenities and underground stations of both Swiss Cottage and St Johns Wood (Jubilee Line). Principal Bedroom with En-Suite Bathroom and Walk-in Wardrobe, Second Double Bedroom, Third Double Bedroom, Reception/Dining Room, Fully Fitted Kitchen, Guest Cloakroom and first come first serve parking

- South Hampstead (4 minutes/0.2 miles)
- Swiss Cottage (4 minutes/0.2 miles)
- St Johns Wood (10 minutes/0.5 miles)
- Finchley Road (10 minutes/0.5 miles)
- Finchley Road & Frognal (14 minutes/0.7 miles)

- Bedrooms: 3
- Receptions : 1
- Bathrooms: 2
- Property Type: Flat
- Parking: Yes
- 24 Hour Portage Within A Gated Development
- Wooden Floors
- Lift
- Moments to Jubilee Line
- New and full interior designed refurbishment
- Available for immediate occupation

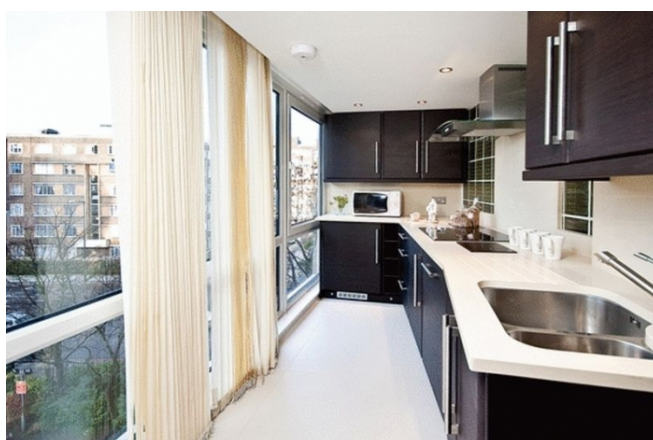
Call 020 7759 2199 to view this property, or visit www.vitaproperties.co.uk for more details

27 Northways Parade, College Crescent, London, NW3 5DN | T: 020 7759 2199 | E: enquiries@vitaproperties.co.uk

We make all efforts to ensure this information is accurate, but we can't guarantee it.

Boydell Court, St Johns Wood Park, London, NW8

Weekly Rental Of £995 Monthly Rental Of £4,312



Call 020 7759 2199 to view this property, or visit www.vitaproperties.co.uk for more details

27 Northways Parade, College Crescent, London, NW3 5DN | T: 020 7759 2199 | E: enquiries@vitaproperties.co.uk

We make all efforts to ensure this information is accurate, but we can't guarantee it.

Boydell Court, St Johns Wood Park, London, NW8

Weekly Rental Of £995 Monthly Rental Of £4,312



Call 020 7759 2199 to view this property, or visit www.vitaproperties.co.uk for more details

27 Northways Parade, College Crescent, London, NW3 5DN | T: 020 7759 2199 | E: enquiries@vitaproperties.co.uk

We make all efforts to ensure this information is accurate, but we can't guarantee it.

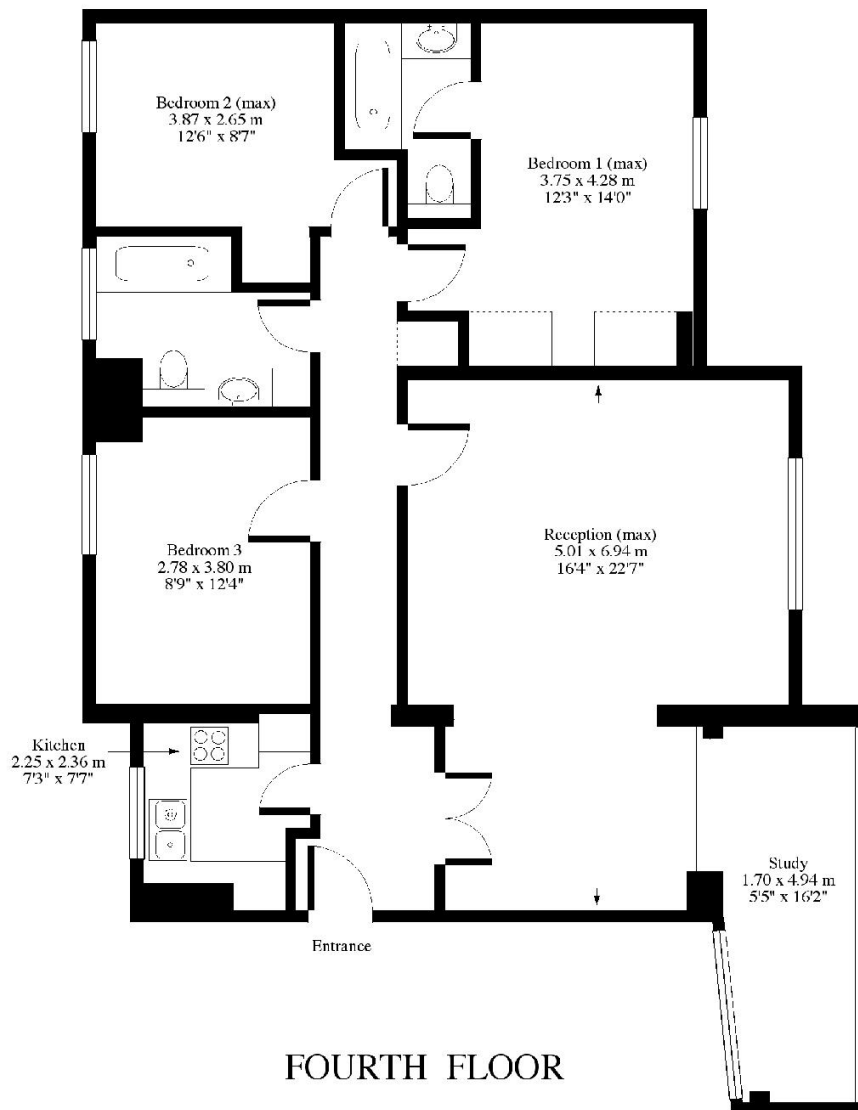
Boydell Court, St Johns Wood Park, London, NW8

Weekly Rental Of £995 Monthly Rental Of £4,312



Boydell Court St. Johns Wood Park, NW8

Approx. Gross Floor Area = 102 sq.meters • 1102 sq.ft



For illustrative purposes only. Not to scale. Prepared by Swan Photography 01435 863908

94BCSJWP

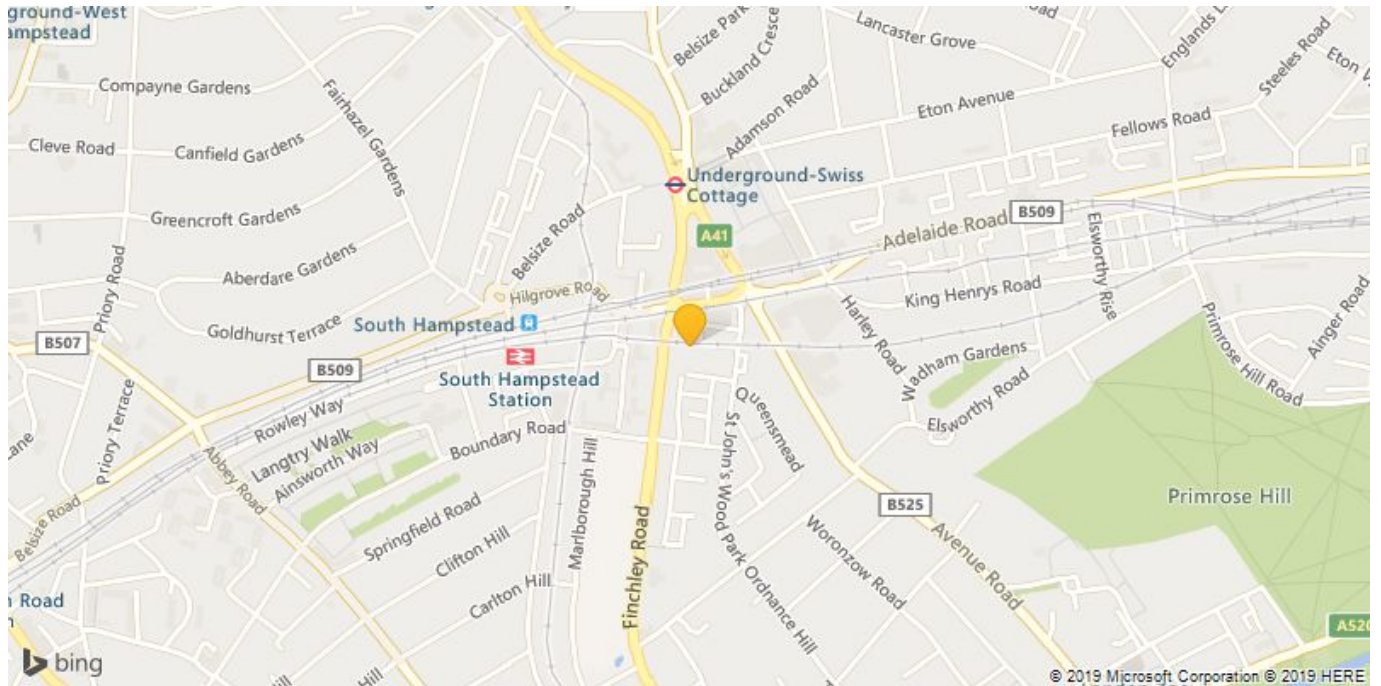
Call 020 7759 2199 to view this property, or visit www.vitaproperties.co.uk for more details

27 Northways Parade, College Crescent, London, NW3 5DN | T: 020 7759 2199 | E: enquiries@vitaproperties.co.uk

We make all efforts to ensure this information is accurate, but we can't guarantee it.

Boydell Court, St Johns Wood Park, London, NW8

Weekly Rental Of £995 Monthly Rental Of £4,312



Call 020 7759 2199 to view this property, or visit www.vitaproperties.co.uk for more details

27 Northways Parade, College Crescent, London, NW3 5DN | T: 020 7759 2199 | E: enquiries@vitaproperties.co.uk

We make all efforts to ensure this information is accurate, but we can't guarantee it.