

# Marlborough Hill, St Johns Wood, London, NW8

Weekly Rental Of £1,650 Monthly Rental Of £7,150



Available 03 April 2021 is this recently modernised and moments from the American School is this 5 Bedrooms; 3 Bathrooms (1 en Suite); town house comprising of, a guest cloakroom; open plan Dining/Family Room leading onto a private rear garden. Loudoun Road is with 10 minutes to walk to St Johns Wood tube and shops and 8 mins walk to Swiss Cottage Tube (Both on the Jubilee line)

St John's Wood has a distinctly English village feel yet enjoys a cosmopolitan population and mix of restaurants and shops. Local attractions include the Abbey Road Studios, Lord's Cricket Ground and the green surrounds of Regent's Park and Primrose Hill. The American School in Loudoun Road is very popular with many executives relocating to London with their families, and St. John's Wood underground station (Jubilee line) is just two stops from Bond Street in the heart of the West End.

St John's Wood in Zone 2, is situated on the Jubilee Line which is one stop from Baker Street underground making it easy to reach central London. Oxford Circus and the West End are just 10 minutes away. Regent's Park and Great Portland underground stations are situated in Zone 1 with access to various lines

- Bedrooms: 5+
- Receptions : 3
- Bathrooms: 3
- Property Type: House
- Garden: Yes
- Eat in Kitchen
- Five Receptions
- Within moments of the American School
- Fully Modernised
- Available 03 April 2021

Call 020 7759 2199 to view this property, or visit [www.vitaproperties.co.uk](http://www.vitaproperties.co.uk) for more details

27 Northways Parade, College Crescent, London, NW3 5DN | T: 020 7759 2199 | E: [enquiries@vitaproperties.co.uk](mailto:enquiries@vitaproperties.co.uk)

We make all efforts to ensure this information is accurate, but we can't guarantee it.

# Marlborough Hill, St Johns Wood, London, NW8

Weekly Rental Of £1,650 Monthly Rental Of £7,150



- St Johns Wood (4 minutes/0.2 miles)
- South Hampstead (6 minutes/0.3 miles)
- Swiss Cottage (10 minutes/0.5 miles)
- Kilburn High Road (12 minutes/0.6 miles)
- Maida Vale (12 minutes/0.6 miles)

Call 020 7759 2199 to view this property, or visit [www.vitaproperties.co.uk](http://www.vitaproperties.co.uk) for more details

27 Northways Parade, College Crescent, London, NW3 5DN | T: 020 7759 2199 | E: [enquiries@vitaproperties.co.uk](mailto:enquiries@vitaproperties.co.uk)

We make all efforts to ensure this information is accurate, but we can't guarantee it.

# Marlborough Hill, St Johns Wood, London, NW8

Weekly Rental Of £1,650 Monthly Rental Of £7,150



Call 020 7759 2199 to view this property, or visit [www.vitaproperties.co.uk](http://www.vitaproperties.co.uk) for more details

27 Northways Parade, College Crescent, London, NW3 5DN | T: 020 7759 2199 | E: [enquiries@vitaproperties.co.uk](mailto:enquiries@vitaproperties.co.uk)

We make all efforts to ensure this information is accurate, but we can't guarantee it.

# Marlborough Hill, St Johns Wood, London, NW8

Weekly Rental Of £1,650 Monthly Rental Of £7,150



Call 020 7759 2199 to view this property, or visit [www.vitaproperties.co.uk](http://www.vitaproperties.co.uk) for more details

27 Northways Parade, College Crescent, London, NW3 5DN | T: 020 7759 2199 | E: [enquiries@vitaproperties.co.uk](mailto:enquiries@vitaproperties.co.uk)

We make all efforts to ensure this information is accurate, but we can't guarantee it.

# Marlborough Hill, St Johns Wood, London, NW8

Weekly Rental Of £1,650 Monthly Rental Of £7,150

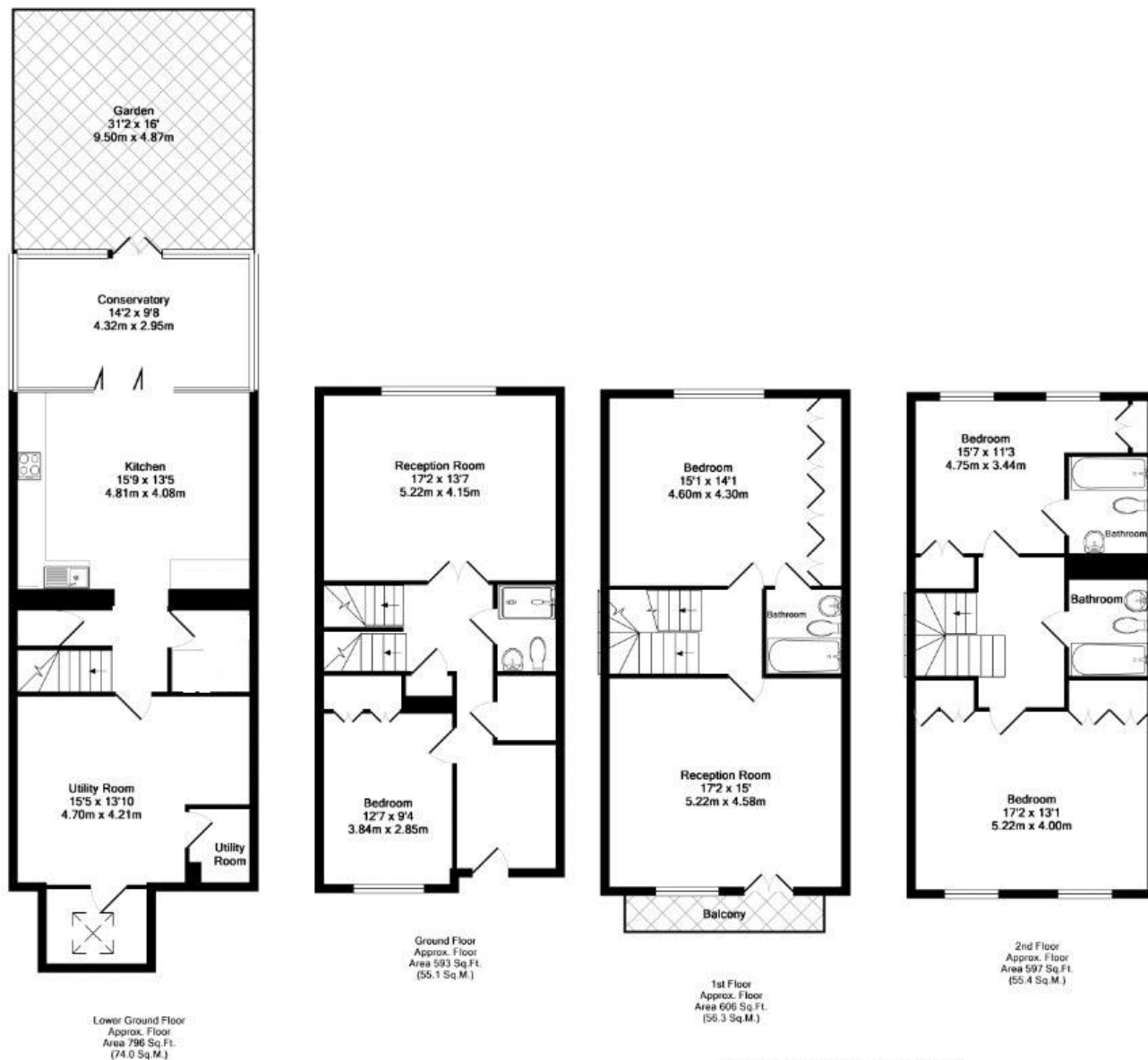


Call 020 7759 2199 to view this property, or visit [www.vitaproperties.co.uk](http://www.vitaproperties.co.uk) for more details

27 Northways Parade, College Crescent, London, NW3 5DN | T: 020 7759 2199 | E: [enquiries@vitaproperties.co.uk](mailto:enquiries@vitaproperties.co.uk)

We make all efforts to ensure this information is accurate, but we can't guarantee it.

Weekly Rental Of £1,650 Monthly Rental Of £7,150



Total Approx. Floor Area 2592 Sq.Ft. (240.8 Sq.M.)

KayGorBNT.LTD Please note position and salary provided for illustration purposes only. We do every effort to ensure that the job is accurate and presents the opportunity in the best way. Measurements of cover, windings and speeds are approximate and are subject to change for any order. **DISCLAIMER: Risk Management.** To find out more about KayGorBNT please visit [www.kaygorbnt.co.uk](http://www.kaygorbnt.co.uk)  
(746) 884-612 (4102)  
[Marketing@kaygorbnt.co.uk](mailto:Marketing@kaygorbnt.co.uk)

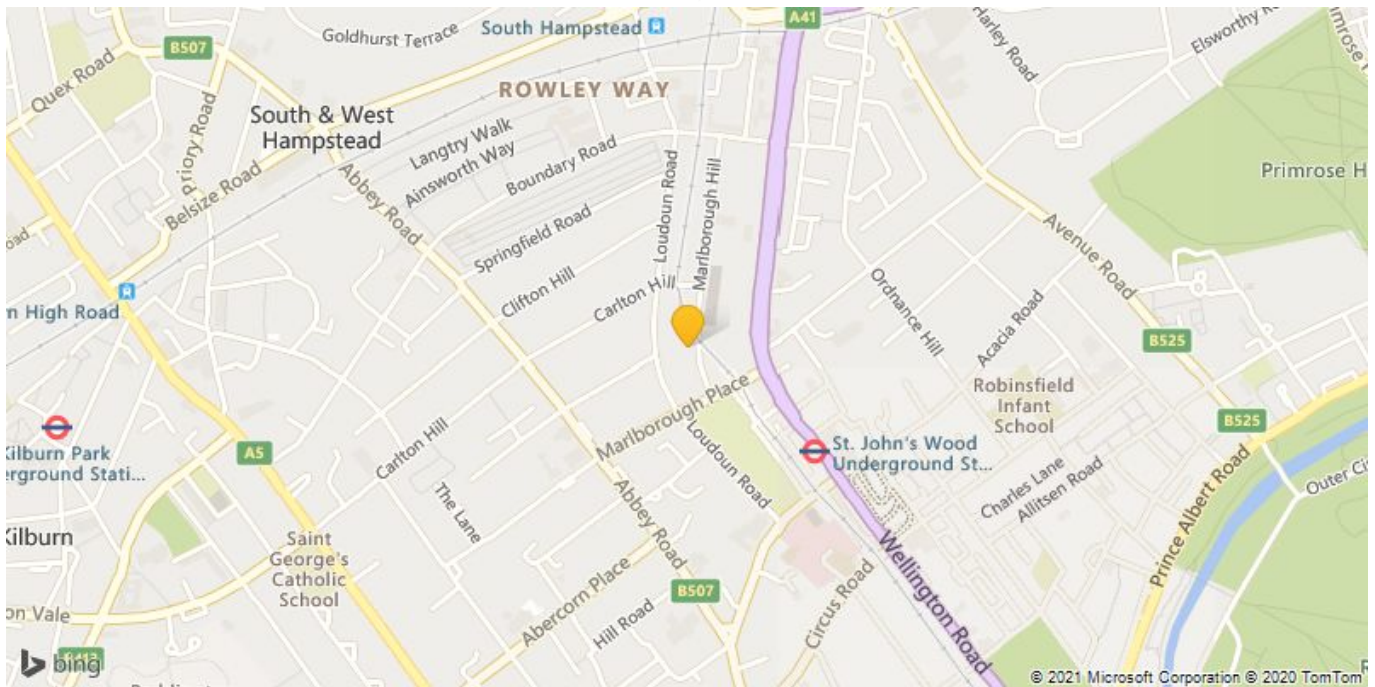
We make all efforts to ensure this information is accurate, but we can't guarantee it.

# Marlborough Hill, St Johns Wood, London, NW8

Weekly Rental Of £1,650 Monthly Rental Of £7,150



KeyAGENT LTD Floor Plans are produced and provided for illustration purposes only. Whilst every attempt has been made to ensure the plan is accurate and presents the property in the best way, measurements of doors, windows and rooms are approximate and no responsibility is taken for any error, omission or mis-statement. To find out more about KeyAGENT please visit [www.keyagent.co.uk](http://www.keyagent.co.uk) (Tel: 0845 475 4165) Made with Metropix S2012



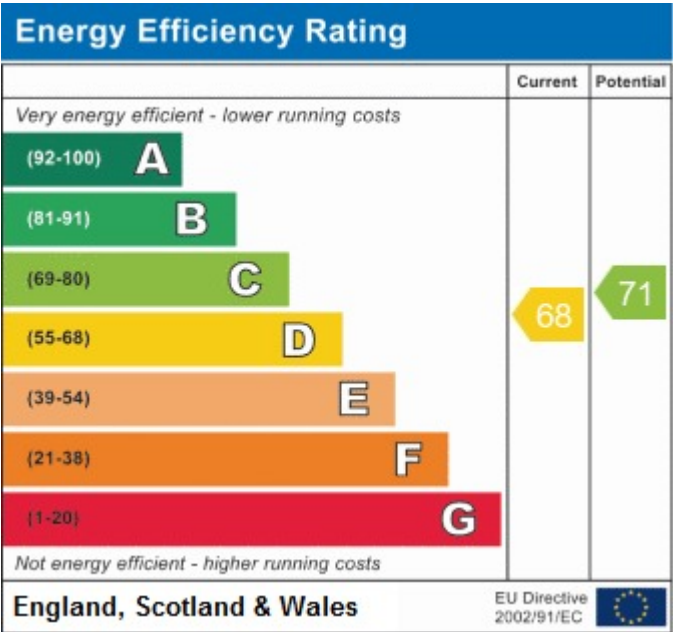
Call 020 7759 2199 to view this property, or visit [www.vitaproperties.co.uk](http://www.vitaproperties.co.uk) for more details

27 Northways Parade, College Crescent, London, NW3 5DN | T: 020 7759 2199 | E: [enquiries@vitaproperties.co.uk](mailto:enquiries@vitaproperties.co.uk)

We make all efforts to ensure this information is accurate, but we can't guarantee it.

Marlborough Hill, St Johns Wood, London,  
NW8

Weekly Rental Of £1,650 Monthly Rental Of £7,150



Call 020 7759 2199 to view this property, or visit [www.vitaproperties.co.uk](http://www.vitaproperties.co.uk) for more details

27 Northways Parade, College Crescent, London, NW3 5DN | T: 020 7759 2199 | E: [enquiries@vitaproperties.co.uk](mailto:enquiries@vitaproperties.co.uk)  
We make all efforts to ensure this information is accurate, but we can't guarantee it.