

Maresfield Gardens, Hampstead, London, NW3

Weekly Rental Of £430 Monthly Rental Of £1,863



Larger than Average 2 Double Bedroom Apartment - Top Floor in a Period Conversion - Bright Reception - Separate Fully Fitted Kitchen - Master Bedroom with Fitted Wardrobes - Spacious Second Double Bedroom - Modern Fully Tiled Family Bathroom - Communal Gardens - Walking Distance to Hampstead Village and Finchley Road Tube Stations - Available Now, Unfurnished - Council Tax: Camden Band F

- Finchley Road (2 minutes/0.1 miles)
- Swiss Cottage (6 minutes/0.3 miles)
- Finchley Road & Frognal (6 minutes/0.3 miles)
- South Hampstead (8 minutes/0.4 miles)
- Belsize Park (12 minutes/0.6 miles)

- Bedrooms: 2
- Receptions : 1
- Bathrooms: 1
- Property Type: Flat
- Enviably located close to Belsize Park
- Stylish and contemporary kitchen
- Well-proportioned reception room
- Walking Distance to Hampstead Village and Finchley Road Tube Stations
- Larger than Average 2 Double Bedroom Apartment
- Available Now, Unfurnished

Call 020 7759 2199 to view this property, or visit www.vitaproperties.co.uk for more details

27 Northways Parade, College Crescent, London, NW3 5DN | T: 020 7759 2199 | E: enquiries@vitaproperties.co.uk

We make all efforts to ensure this information is accurate, but we can't guarantee it.

Maresfield Gardens, Hampstead, London, NW3

Weekly Rental Of £430 Monthly Rental Of £1,863



Call 020 7759 2199 to view this property, or visit www.vitaproperties.co.uk for more details

27 Northways Parade, College Crescent, London, NW3 5DN | T: 020 7759 2199 | E: enquiries@vitaproperties.co.uk

We make all efforts to ensure this information is accurate, but we can't guarantee it.

Maresfield Gardens, Hampstead, London, NW3

Weekly Rental Of £430 Monthly Rental Of £1,863



Call 020 7759 2199 to view this property, or visit www.vitaproperties.co.uk for more details

27 Northways Parade, College Crescent, London, NW3 5DN | T: 020 7759 2199 | E: enquiries@vitaproperties.co.uk

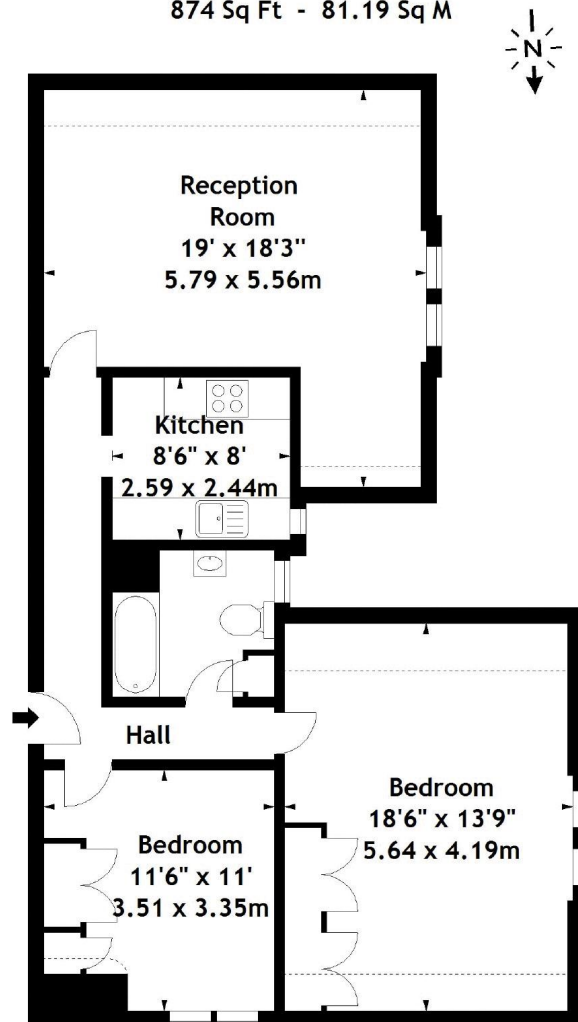
We make all efforts to ensure this information is accurate, but we can't guarantee it.

Maresfield Gardens, Hampstead, London, NW3

Weekly Rental Of £430 Monthly Rental Of £1,863



Maresfield Gardens, NW3
Approx. Gross Internal Area
874 Sq Ft - 81.19 Sq M



Second Floor

Measured in accordance with RICS guidelines. Every attempt is made to ensure accuracy, however all measurements are approximate. This floor plan is for illustrative purposes only and is not to scale.

© Datagraphy Ltd 2016
Photographs * Floorplans * Virtual Tours
Tel: 0845 643 4401 www.datagraphy.com

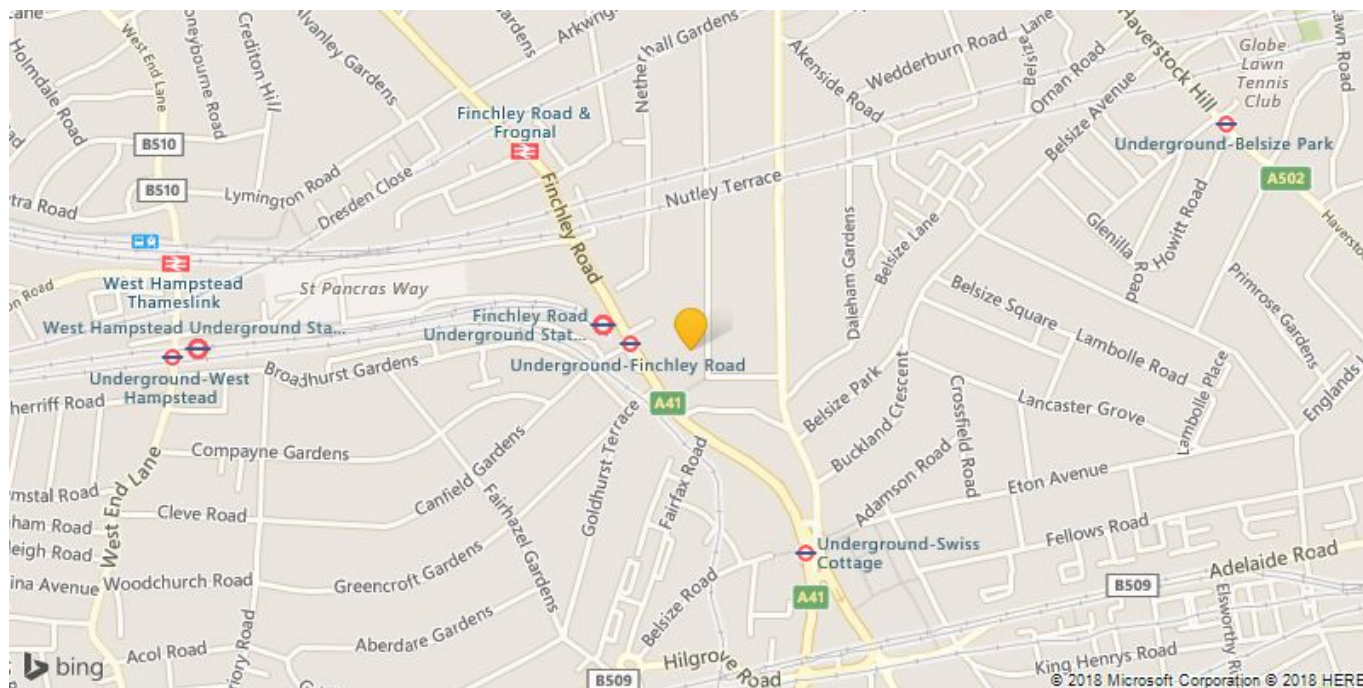
Call 020 7759 2199 to view this property, or visit www.vitaproperties.co.uk for more details

27 Northways Parade, College Crescent, London, NW3 5DN | T: 020 7759 2199 | E: enquiries@vitaproperties.co.uk

We make all efforts to ensure this information is accurate, but we can't guarantee it.

Maresfield Gardens, Hampstead, London, NW3

Weekly Rental Of £430 Monthly Rental Of £1,863



Call 020 7759 2199 to view this property, or visit www.vitaproperties.co.uk for more details

27 Northways Parade, College Crescent, London, NW3 5DN | T: 020 7759 2199 | E: enquiries@vitaproperties.co.uk

We make all efforts to ensure this information is accurate, but we can't guarantee it.