

Boydell Court, St Johns Wood Park, London, NW8

Weekly Rental Of £975 Monthly Rental Of £4,225



A beautifully presented three bedroom (1111 Sq Ft) 1st floor apartment situated in this well maintained purpose built block with 24 hour portage. The property has been refurbished to the highest standard and boasts a dual aspect reception room with London views. Boydell Court is located within close proximity to the local amenities and underground stations of both Swiss Cottage and St Johns Wood (Jubilee Line). Principal Bedroom with En-Suite Bathroom and Walk-in Wardrobe, Second Double Bedroom, Third Double Bedroom, Reception/Dining Room, Fully Fitted Kitchen, Guest Cloakroom and first come first serve parking

- South Hampstead (4 minutes/0.2 miles)
- Swiss Cottage (4 minutes/0.2 miles)
- St Johns Wood (10 minutes/0.5 miles)
- Finchley Road (10 minutes/0.5 miles)
- Finchley Road & Frognal (14 minutes/0.7 miles)

- Bedrooms: 3
- Receptions : 1
- Bathrooms: 2
- Property Type: Flat
- Parking: Yes
- Porter
- Wooden Floors
- Lift
- Moments to Jubilee Line
- Available Now!

Call 020 7759 2199 to view this property, or visit www.vitaproperties.co.uk for more details

27 Northways Parade, College Crescent, London, NW3 5DN | T: 020 7759 2199 | E: enquiries@vitaproperties.co.uk

We make all efforts to ensure this information is accurate, but we can't guarantee it.

Boydell Court, St Johns Wood Park, London, NW8

Weekly Rental Of £975 Monthly Rental Of £4,225



Call 020 7759 2199 to view this property, or visit www.vitaproperties.co.uk for more details

27 Northways Parade, College Crescent, London, NW3 5DN | T: 020 7759 2199 | E: enquiries@vitaproperties.co.uk

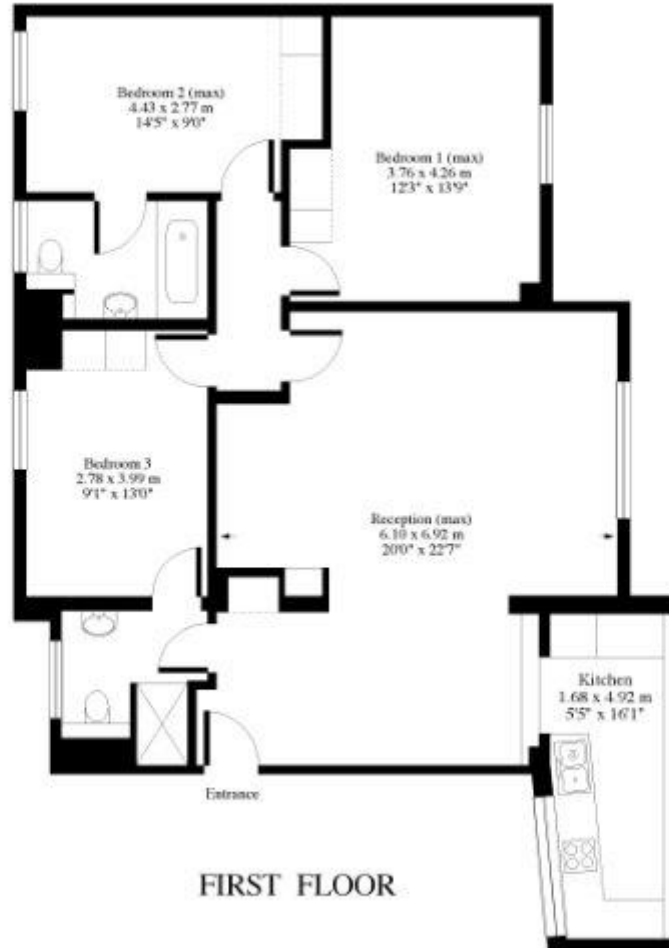
We make all efforts to ensure this information is accurate, but we can't guarantee it.

Boydell Court, St Johns Wood Park, London, NW8

Weekly Rental Of £975 Monthly Rental Of £4,225



Approx. Gross Floor Area = 102 sq.meters • 1100 sq.feet



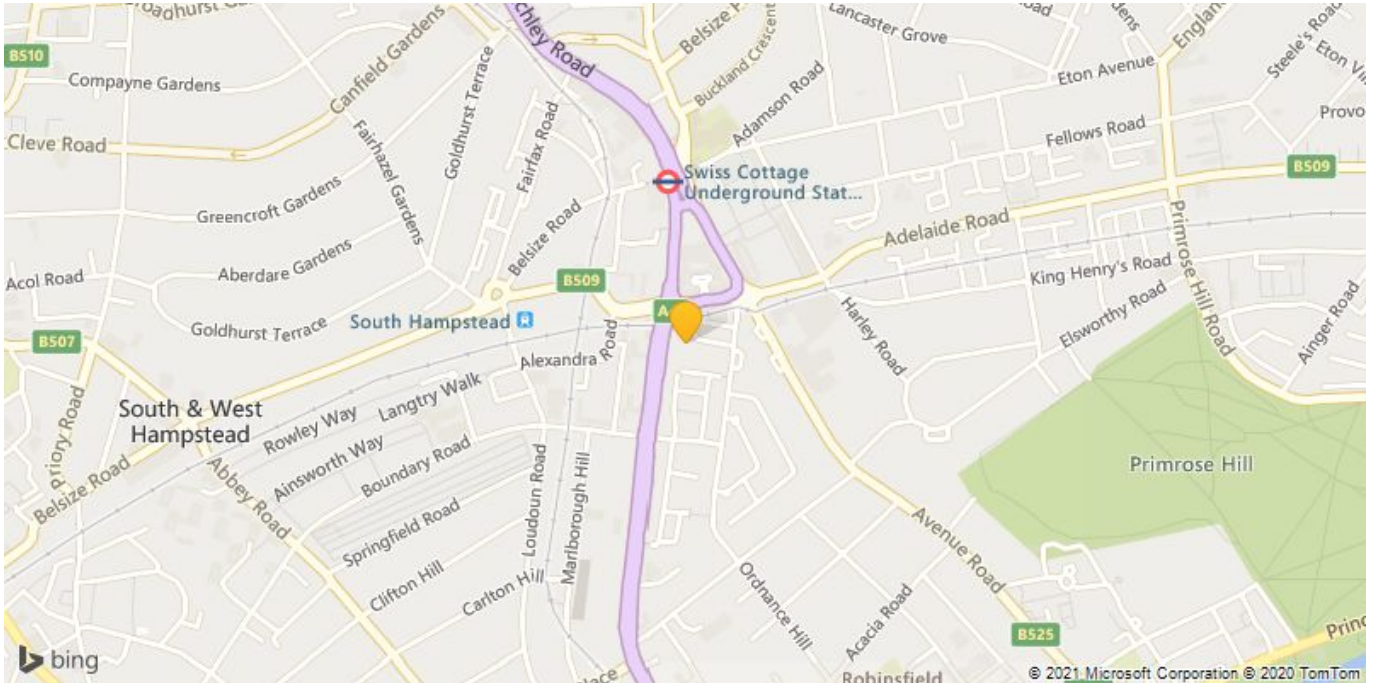
Call 020 7759 2199 to view this property, or visit www.vitaproperties.co.uk for more details

27 Northways Parade, College Crescent, London, NW3 5DN | T: 020 7759 2199 | E: enquiries@vitaproperties.co.uk

We make all efforts to ensure this information is accurate, but we can't guarantee it.

Boydell Court, St Johns Wood Park, London, NW8

Weekly Rental Of £975 Monthly Rental Of £4,225



Call 020 7759 2199 to view this property, or visit www.vitaproperties.co.uk for more details

27 Northways Parade, College Crescent, London, NW3 5DN | T: 020 7759 2199 | E: enquiries@vitaproperties.co.uk

We make all efforts to ensure this information is accurate, but we can't guarantee it.