

Meadowbank, Primrose Hill, London, NW3

Weekly Rental Of £1,975 Monthly Rental Of £8,558



Available immediately - Situated in a private road adjacent to Primrose Hill Park, is this recently refurbished end of terrace, modern town house. Set over over four floors with parking for 2-3 vehicles, this four bedroom house has access from the rear to well maintained communal gardens. The house offers approximately 2,057 sq ft / 191 sq m accommodation with 3 separate reception rooms. Meadowbank is a private close of modern townhouses, located close to Primrose Hill's charming shops and restaurants (approximately 0.2 miles). The nearest underground station is Chalk Farm (Northern line) tube station, about half a mile away

- Chalk Farm (8 minutes/0.4 miles)
- Kentish Town West (14 minutes/0.7 miles)
- Swiss Cottage (14 minutes/0.7 miles)
- Belsize Park (14 minutes/0.7 miles)
- St Johns Wood (14 minutes/0.7 miles)

- Bedrooms: 4
- Receptions : 3
- Bathrooms: 3
- Property Type: House
- Parking: Yes
- Garden
- Moments to Primrose Hill
- Within walking distance to Chalk Farm tube station
- Recently refurbished to a modern finish
- Meadowbank is a private close of modern townhouses
- Available immediately

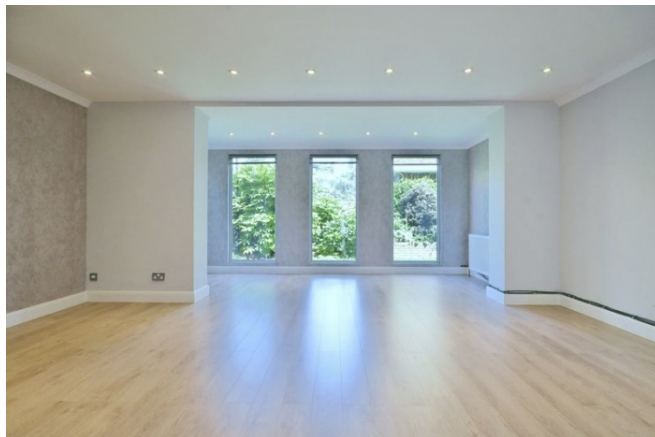
Call 020 7759 2199 to view this property, or visit www.vitaproperties.co.uk for more details

27 Northways Parade, College Crescent, London, NW3 5DN | T: 020 7759 2199 | E: enquiries@vitaproperties.co.uk

We make all efforts to ensure this information is accurate, but we can't guarantee it.

Meadowbank, Primrose Hill, London, NW3

Weekly Rental Of £1,975 Monthly Rental Of £8,558



Call 020 7759 2199 to view this property, or visit www.vitaproperties.co.uk for more details

27 Northways Parade, College Crescent, London, NW3 5DN | T: 020 7759 2199 | E: enquiries@vitaproperties.co.uk

We make all efforts to ensure this information is accurate, but we can't guarantee it.

Meadowbank, Primrose Hill, London, NW3

Weekly Rental Of £1,975 Monthly Rental Of £8,558



Call 020 7759 2199 to view this property, or visit www.vitaproperties.co.uk for more details

27 Northways Parade, College Crescent, London, NW3 5DN | T: 020 7759 2199 | E: enquiries@vitaproperties.co.uk

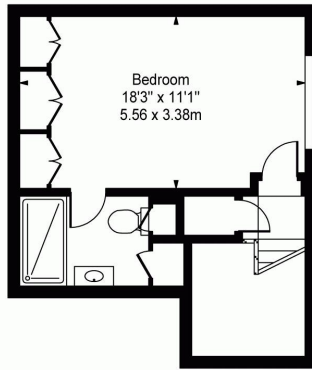
We make all efforts to ensure this information is accurate, but we can't guarantee it.

Meadowbank, Primrose Hill, London, NW3

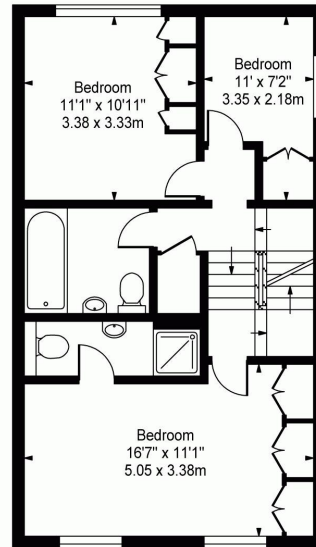
Weekly Rental Of £1,975 Monthly Rental Of £8,558



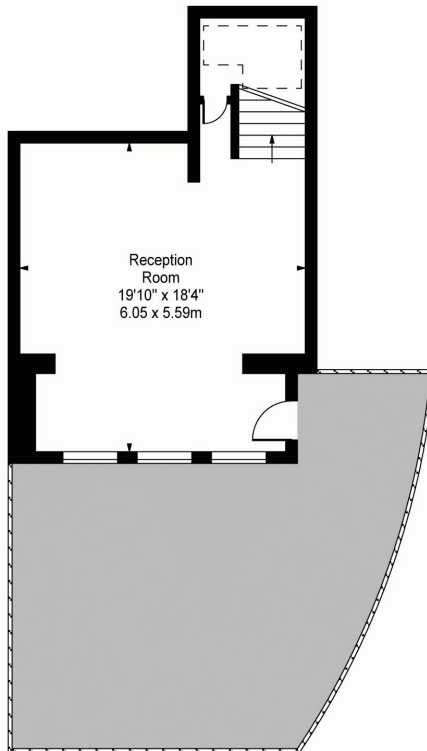
Meadowbank, Primrose Hill, NW3



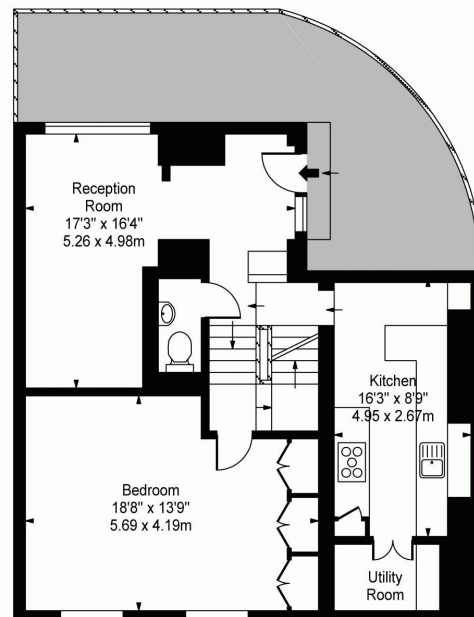
Second Floor



First Floor



Lower Ground Floor



Ground Floor

Approx Gross Internal Area **2081 Sq Ft - 193.58 Sq M**

Approx Floor Area Including Restricted Heights **2109 Sq Ft - 195.92 Sq M**

For Illustration Purposes Only - Not To Scale Floor Plan by www.nogaphotostudio.com Ref: No.31916

This floor plan should be used as a general outline for guidance only. Any intending purchaser or lessee should satisfy themselves by inspection, searches, enquiries and full survey as to the correctness of each statement. Any areas, measurements or distances quoted are approximate and should not be used to value a property or be the basis of any sale or let.

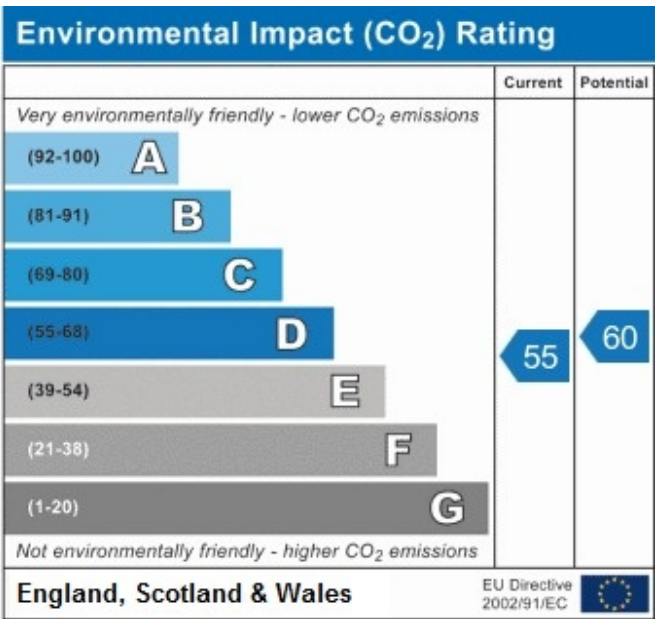
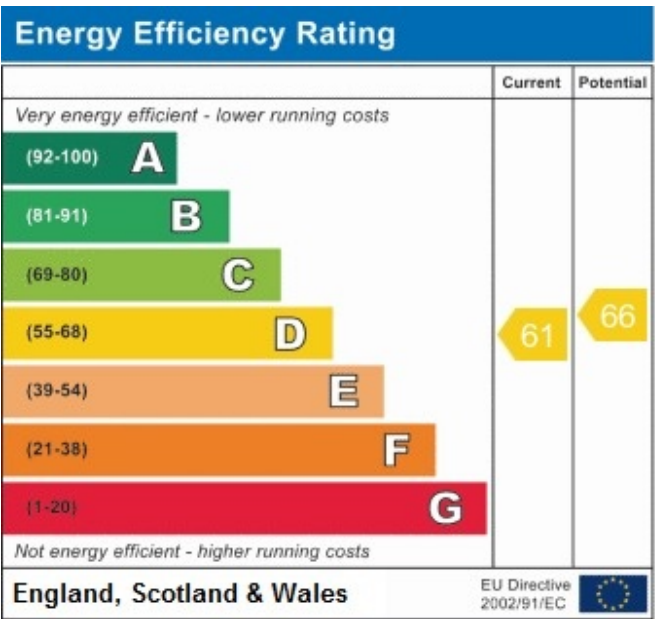
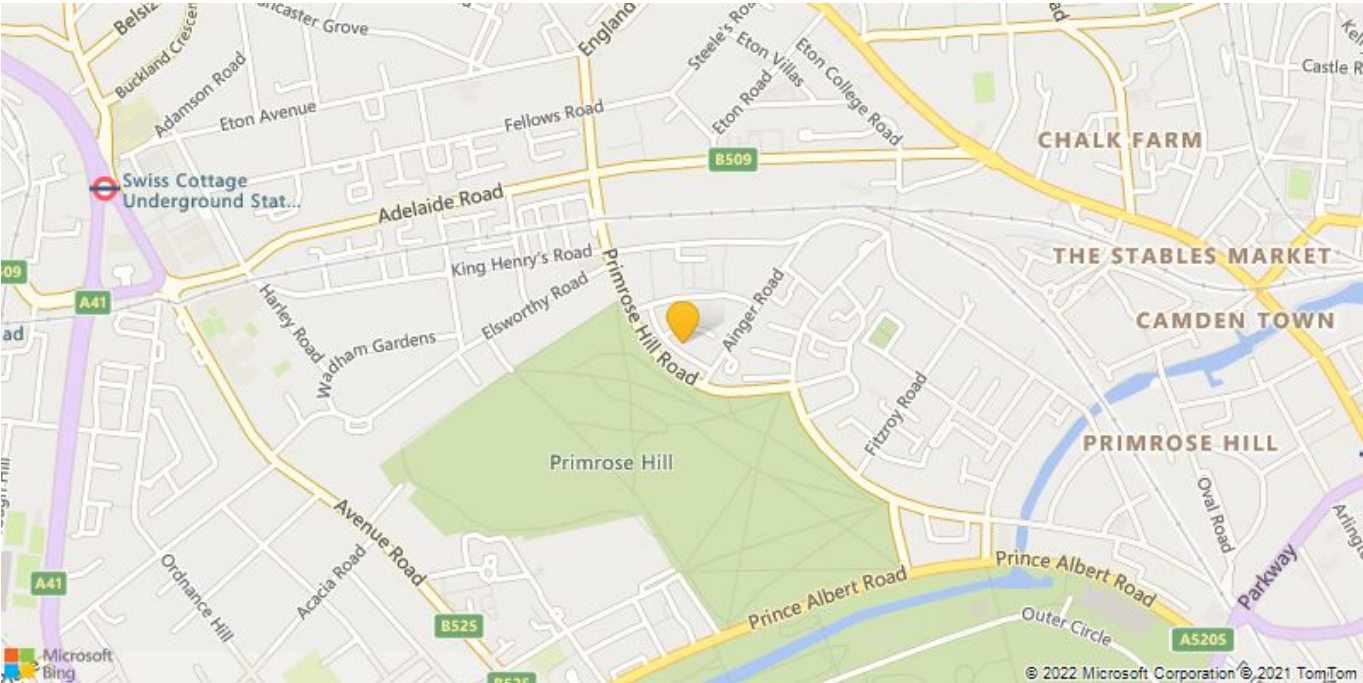
Call 020 7759 2199 to view this property, or visit www.vitaproperties.co.uk for more details

27 Northways Parade, College Crescent, London, NW3 5DN | T: 020 7759 2199 | E: enquiries@vitaproperties.co.uk

We make all efforts to ensure this information is accurate, but we can't guarantee it.

Meadowbank, Primrose Hill, London, NW3

Weekly Rental Of £1,975 Monthly Rental Of £8,558



Call 020 7759 2199 to view this property, or visit www.vitaproperties.co.uk for more details