

# St Edmunds Terrace, St Johns Wood, London, NW8

Weekly Rental Of £595 Monthly Rental Of £2,578



Available 26 August 2020 is this beautifully presented property with a contemporary feel. Situated on the first floor of a well maintained portered building, the bright and airy apartment comprises of two double bedrooms, two bathrooms and a fitted open-plan kitchen/reception room with high ceilings. Offered on a furnished basis. St Edmunds Terrace is located seconds to the entrance of Primrose Hill park, Regents Park and only a short stroll to St Johns Wood High Street and tube.

- St Johns Wood (10 minutes/0.5 miles)
- Chalk Farm (14 minutes/0.7 miles)
- Swiss Cottage (14 minutes/0.7 miles)
- South Hampstead (16 minutes/0.8 miles)
- Camden Town (18 minutes/0.9 miles)

- Bedrooms: 2
- Receptions : 1
- Bathrooms: 2
- Property Type: Flat
- Seconds to Primrose Hill and Regents Park
- Two Bathrooms
- Portered Block
- Lift
- Available from 26 August 2020

Call 020 7759 2199 to view this property, or visit [www.vitaproperties.co.uk](http://www.vitaproperties.co.uk) for more details

27 Northways Parade, College Crescent, London, NW3 5DN | T: 020 7759 2199 | E: [enquiries@vitaproperties.co.uk](mailto:enquiries@vitaproperties.co.uk)

We make all efforts to ensure this information is accurate, but we can't guarantee it.

# St Edmunds Terrace, St Johns Wood, London, NW8

Weekly Rental Of £595 Monthly Rental Of £2,578



Call 020 7759 2199 to view this property, or visit [www.vitaproperties.co.uk](http://www.vitaproperties.co.uk) for more details

27 Northways Parade, College Crescent, London, NW3 5DN | T: 020 7759 2199 | E: [enquiries@vitaproperties.co.uk](mailto:enquiries@vitaproperties.co.uk)

We make all efforts to ensure this information is accurate, but we can't guarantee it.



# St Edmunds Terrace, St Johns Wood, London, NW8

Weekly Rental Of £595 Monthly Rental Of £2,578



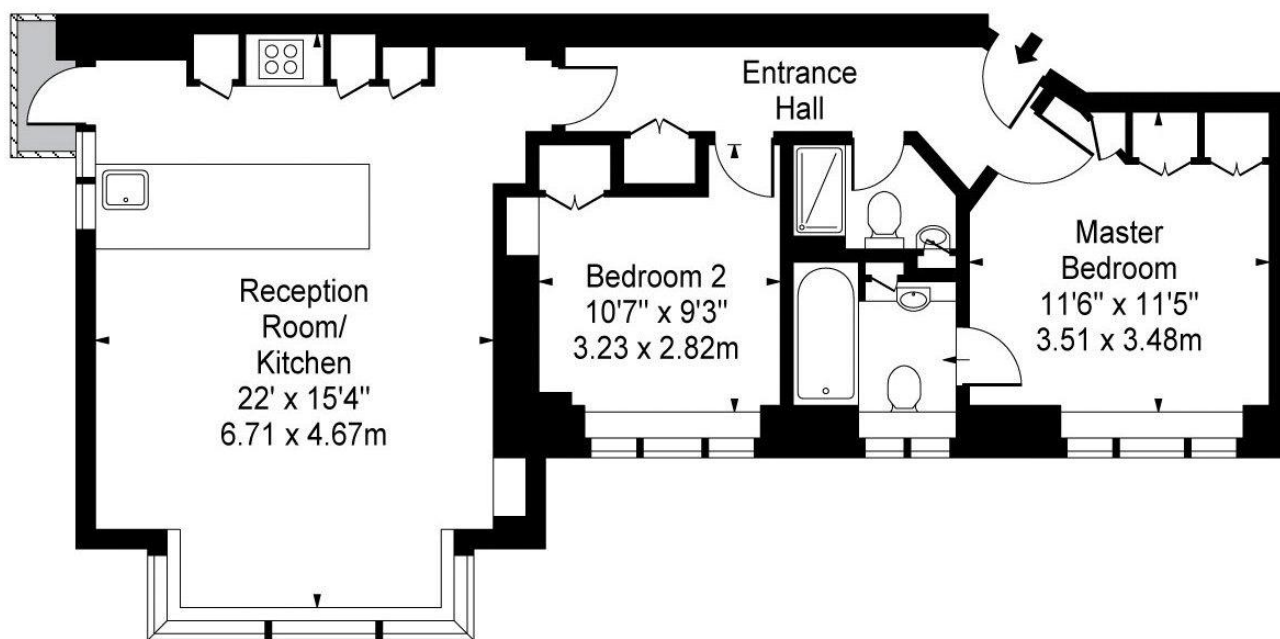
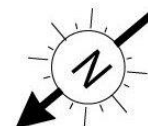
Call 020 7759 2199 to view this property, or visit [www.vitaproperties.co.uk](http://www.vitaproperties.co.uk) for more details

27 Northways Parade, College Crescent, London, NW3 5DN | T: 020 7759 2199 | E: [enquiries@vitaproperties.co.uk](mailto:enquiries@vitaproperties.co.uk)

We make all efforts to ensure this information is accurate, but we can't guarantee it.

St Edmunds Terrace, St Johns Wood,  
London, NW8

Weekly Rental Of £595 Monthly Rental Of £2,578



First Floor

Approx Gross Internal Area    **739 Sq Ft - 68.74 Sq M**

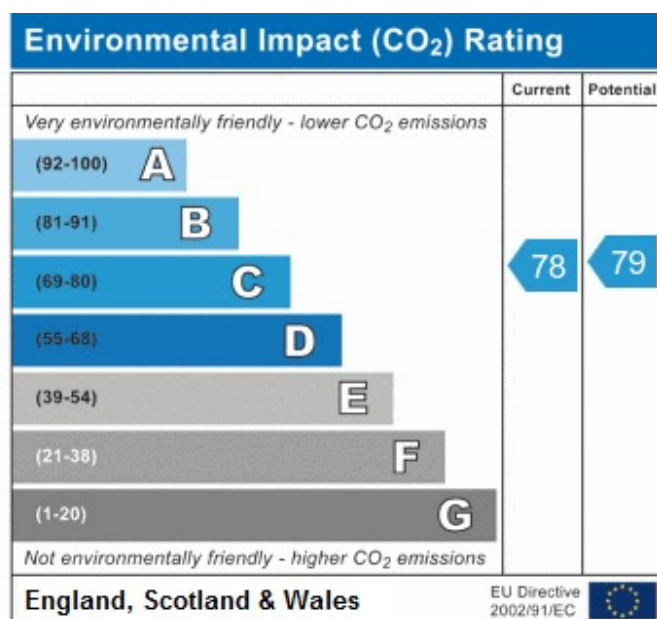
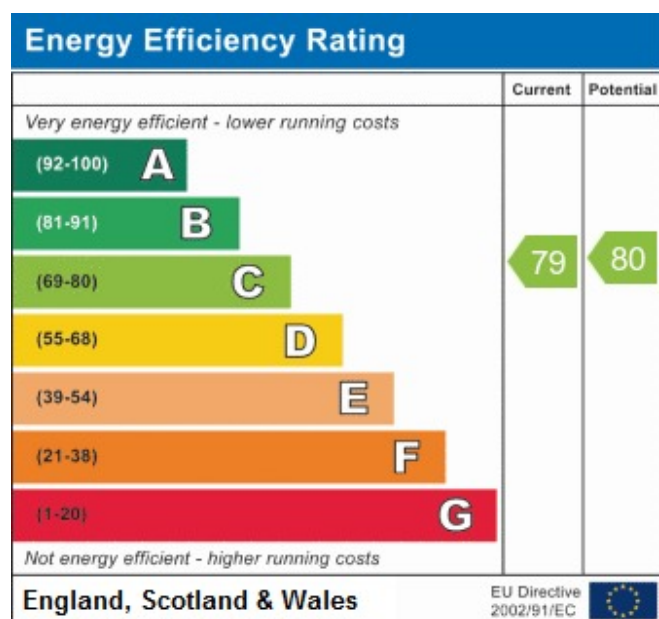
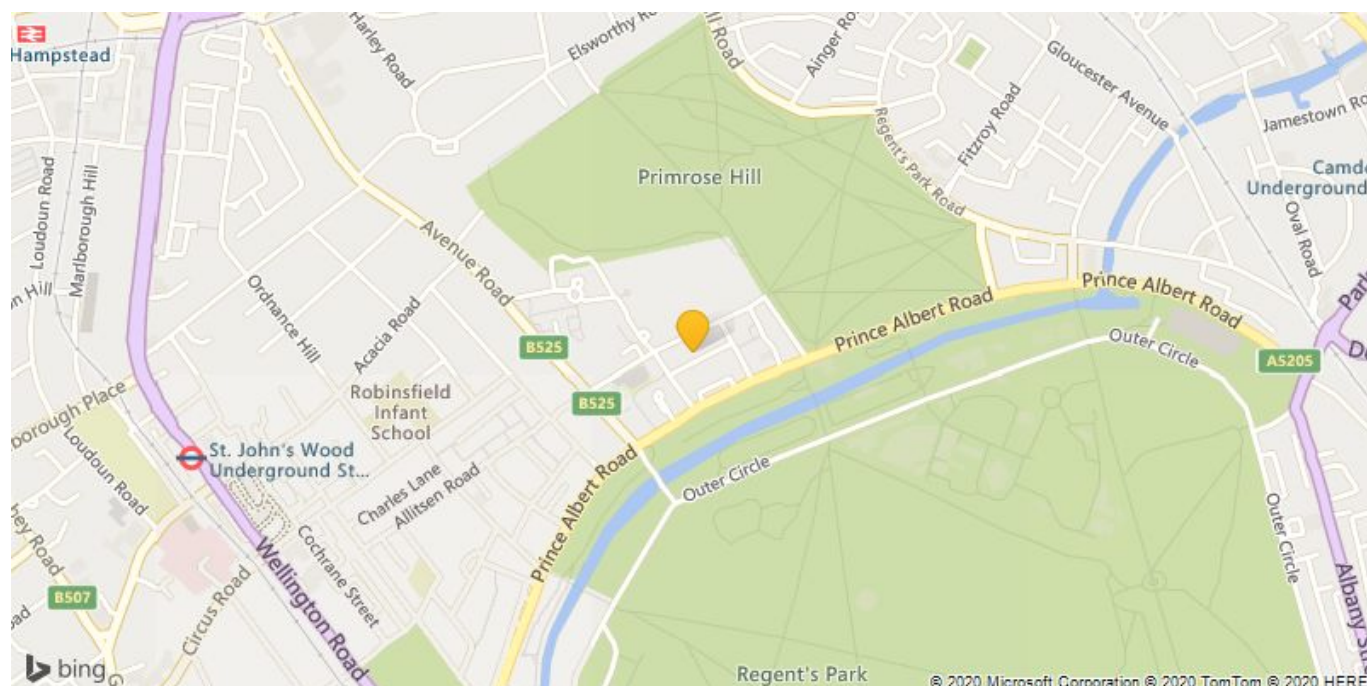
Call 020 7759 2199 to view this property, or visit [www.vitaproperties.co.uk](http://www.vitaproperties.co.uk) for more details

27 Northways Parade, College Crescent, London, NW3 5DN | T: 020 7759 2199 | E: [enquiries@vitaproperties.co.uk](mailto:enquiries@vitaproperties.co.uk)

We make all efforts to ensure this information is accurate, but we can't guarantee it.

# St Edmunds Terrace, St Johns Wood, London, NW8

Weekly Rental Of £595 Monthly Rental Of £2,578



Call 020 7759 2199 to view this property, or visit [www.vitaproperties.co.uk](http://www.vitaproperties.co.uk) for more details

27 Northways Parade, College Crescent, London, NW3 5DN | T: 020 7759 2199 | E: [enquiries@vitaproperties.co.uk](mailto:enquiries@vitaproperties.co.uk)

We make all efforts to ensure this information is accurate, but we can't guarantee it.