

Ordnance Hill, St Johns Wood, London NW8

Weekly Rental Of £1,950 Monthly Rental Of £8,450



Available immediately - Vita Properties are delighted to offer this newly refurbished end of terrace Georgian house. Arranged over four floors this family home comprises master bedroom with en suite shower room, three further bedrooms, family bathroom, large reception room leading onto a private garden, kitchen/dining room and guest cloakroom. Ordnance Hill is located within walking distance to St John's Wood High Street and underground station (Jubilee line).

- St Johns Wood (4 minutes/0.2 miles)
- South Hampstead (12 minutes/0.6 miles)
- Swiss Cottage (12 minutes/0.6 miles)
- Maida Vale (16 minutes/0.8 miles)
- Kilburn High Road (18 minutes/0.9 miles)

- Bedrooms: 4
- Receptions : 2
- Bathrooms: 2
- Property Type: House
- Garden: Yes
- Fully Refurbished
- Managed
- Large Reception
- Guest Cloakroom
- Available immediately

Call 020 7759 2199 to view this property, or visit www.vitaproperties.co.uk for more details

27 Northways Parade, College Crescent, London, NW3 5DN | T: 020 7759 2199 | E: enquiries@vitaproperties.co.uk

We make all efforts to ensure this information is accurate, but we can't guarantee it.

Ordnance Hill, St Johns Wood, London NW8

Weekly Rental Of £1,950 Monthly Rental Of £8,450



Call 020 7759 2199 to view this property, or visit www.vitaproperties.co.uk for more details

27 Northways Parade, College Crescent, London, NW3 5DN | T: 020 7759 2199 | E: enquiries@vitaproperties.co.uk

We make all efforts to ensure this information is accurate, but we can't guarantee it.

Ordnance Hill, St Johns Wood, London NW8

Weekly Rental Of £1,950 Monthly Rental Of £8,450



Call 020 7759 2199 to view this property, or visit www.vitaproperties.co.uk for more details

27 Northways Parade, College Crescent, London, NW3 5DN | T: 020 7759 2199 | E: enquiries@vitaproperties.co.uk

We make all efforts to ensure this information is accurate, but we can't guarantee it.

Ordnance Hill, St Johns Wood, London NW8

Weekly Rental Of £1,950 Monthly Rental Of £8,450



Call 020 7759 2199 to view this property, or visit www.vitaproperties.co.uk for more details

27 Northways Parade, College Crescent, London, NW3 5DN | T: 020 7759 2199 | E: enquiries@vitaproperties.co.uk

We make all efforts to ensure this information is accurate, but we can't guarantee it.

Ordnance Hill, St Johns Wood, London NW8

Weekly Rental Of £1,950 Monthly Rental Of £8,450



Call 020 7759 2199 to view this property, or visit www.vitaproperties.co.uk for more details

27 Northways Parade, College Crescent, London, NW3 5DN | T: 020 7759 2199 | E: enquiries@vitaproperties.co.uk

We make all efforts to ensure this information is accurate, but we can't guarantee it.

Ordnance Hill, St Johns Wood, London NW8

Weekly Rental Of £1,950 Monthly Rental Of £8,450



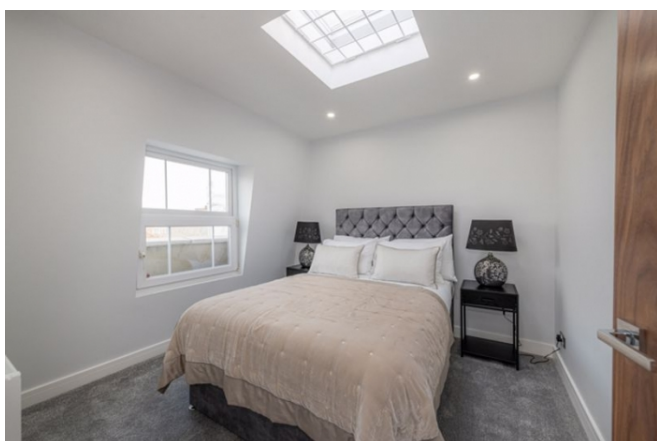
Call 020 7759 2199 to view this property, or visit www.vitaproperties.co.uk for more details

27 Northways Parade, College Crescent, London, NW3 5DN | T: 020 7759 2199 | E: enquiries@vitaproperties.co.uk

We make all efforts to ensure this information is accurate, but we can't guarantee it.

Ordnance Hill, St Johns Wood, London NW8

Weekly Rental Of £1,950 Monthly Rental Of £8,450



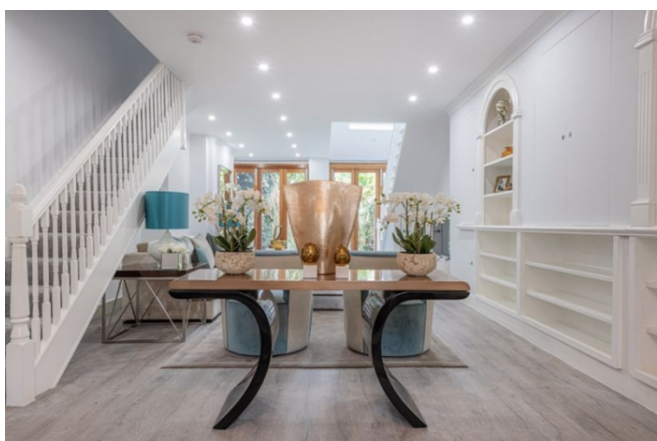
Call 020 7759 2199 to view this property, or visit www.vitaproperties.co.uk for more details

27 Northways Parade, College Crescent, London, NW3 5DN | T: 020 7759 2199 | E: enquiries@vitaproperties.co.uk

We make all efforts to ensure this information is accurate, but we can't guarantee it.

Ordnance Hill, St Johns Wood, London NW8

Weekly Rental Of £1,950 Monthly Rental Of £8,450



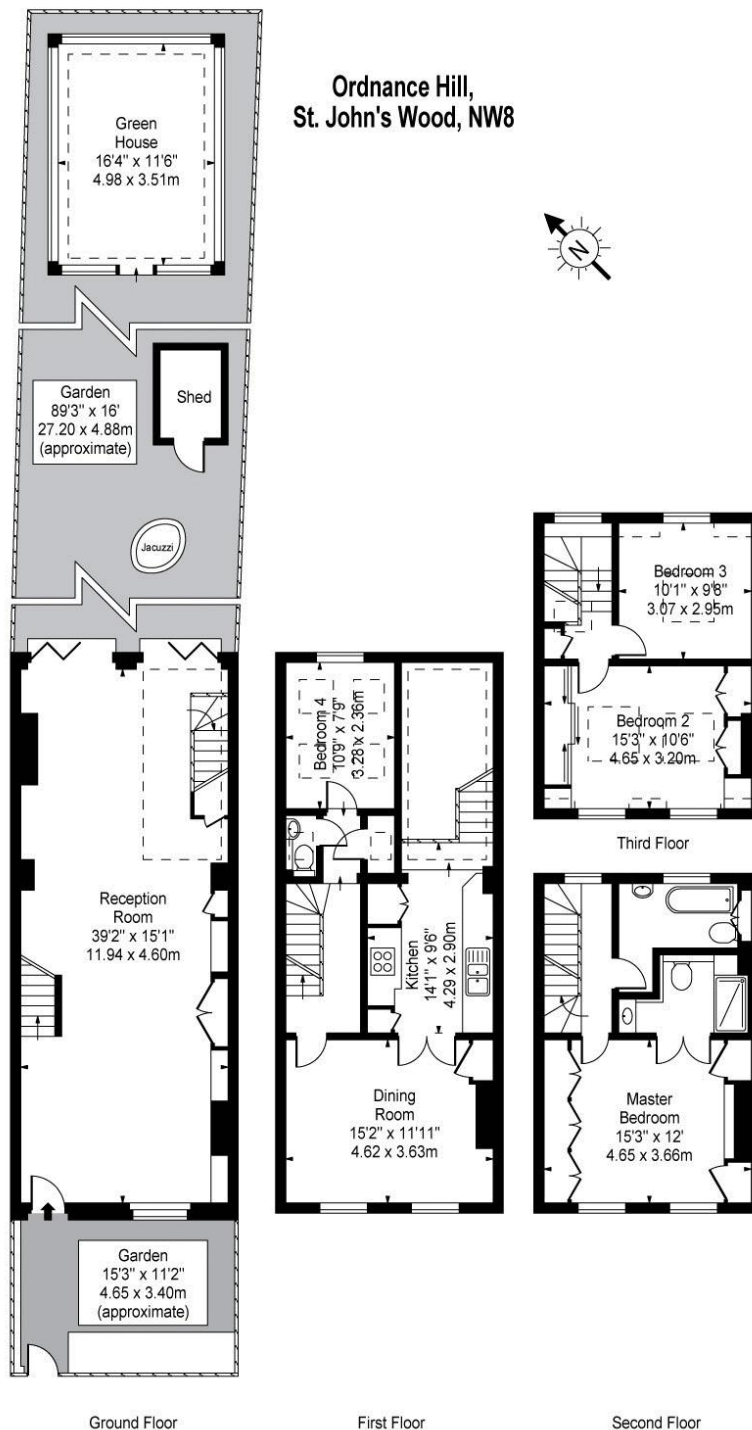
Call 020 7759 2199 to view this property, or visit www.vitaproperties.co.uk for more details

27 Northways Parade, College Crescent, London, NW3 5DN | T: 020 7759 2199 | E: enquiries@vitaproperties.co.uk

We make all efforts to ensure this information is accurate, but we can't guarantee it.

Ordnance Hill, St Johns Wood, London NW8

Weekly Rental Of £1,950 Monthly Rental Of £8,450



Approx Gross Internal Area Including Restricted Heights
Approx Gross Internal Area Excluding Restricted Heights

1893 Sq Ft - 175.86 Sq M
1881 Sq Ft - 174.74 Sq M

(Excluding Green House & Shed)

For Illustration Purposes Only - Not To Scale Floor Plan by www.nogaphotostudio.com Ref: No.12731

This floor plan should be used as a general outline for guidance only. Any intending purchaser or lessee should satisfy themselves by inspection, searches, enquiries and full survey as to the correctness of each statement. Any areas, measurements or distances quoted are approximate and should not be used to value a property or be the basis of any sale or let.

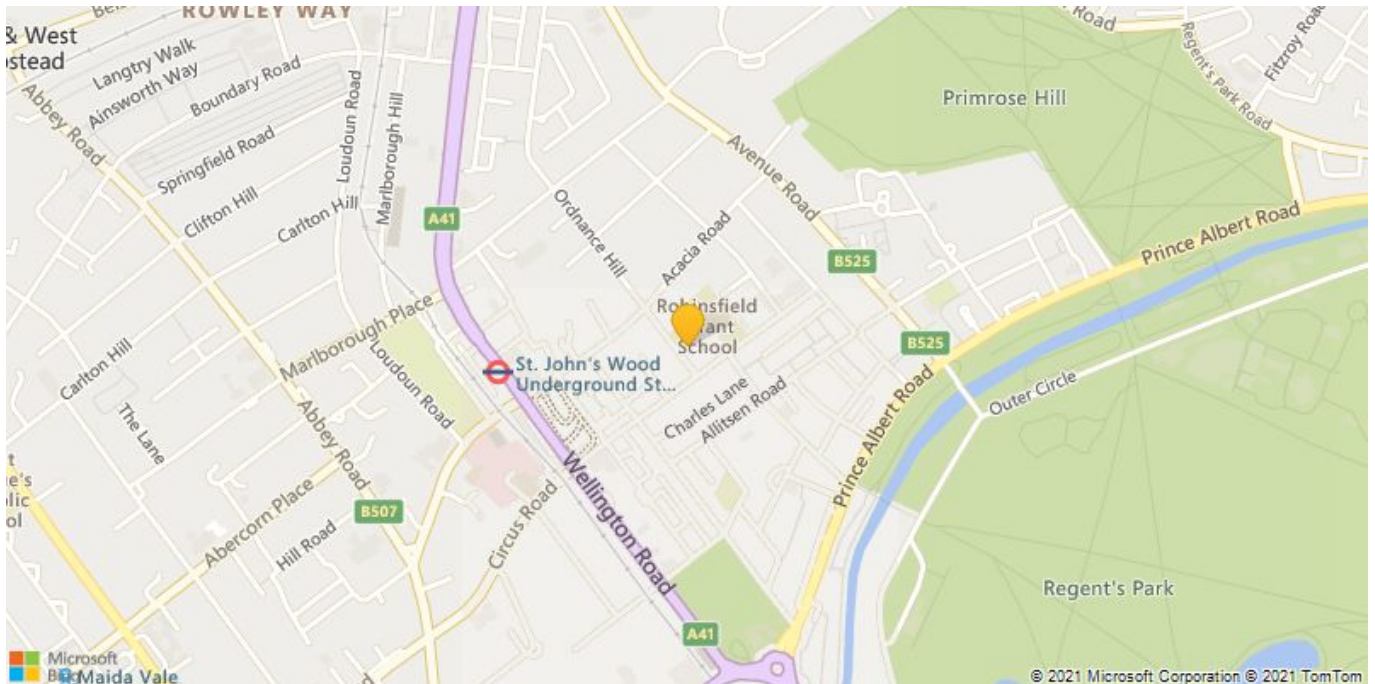
Call 020 7759 2199 to view this property, or visit www.vitaproperties.co.uk for more details

27 Northways Parade, College Crescent, London, NW3 5DN | T: 020 7759 2199 | E: enquiries@vitaproperties.co.uk

We make all efforts to ensure this information is accurate, but we can't guarantee it.

Ordnance Hill, St Johns Wood, London NW8

Weekly Rental Of £1,950 Monthly Rental Of £8,450



Call 020 7759 2199 to view this property, or visit www.vitaproperties.co.uk for more details

27 Northways Parade, College Crescent, London, NW3 5DN | T: 020 7759 2199 | E: enquiries@vitaproperties.co.uk

We make all efforts to ensure this information is accurate, but we can't guarantee it.