



Burns Road

HARLESDEN, LONDON, NW10

£825,000



Beautifully arranged with many original features, this three bedroom house offers excellent space and natural light throughout. On the ground floor, a generous double reception room with high ceilings, period fireplaces and original wooden floors leads through to a large kitchen with an island – ideal for anyone who enjoys cooking and entertaining. From here, a set of bi-fold doors opens onto a pretty east-facing garden with a patio, lawn, and mature trees and shrubs.

The first floor offers three spacious double bedrooms, with the principal bedroom situated at the front and benefiting from a full wall of fitted wardrobes. A recently renovated family bathroom with under floor heating completes this floor.

This house showcases generous proportions in its current layout, while also offering scope to extend both the ground floor and loft space (subject to the necessary planning permissions).





Burns Road is a popular tree-lined street located within the grid of roads behind Park Parade in Harlesden. The road enjoys quick access to local amenities, including the vibrant Park Parade, known for its independent businesses and strong sense of community.

The area is also well regarded for its schooling, with John Keble Church of England Primary School and Maple Walk Independent School both within walking distance.





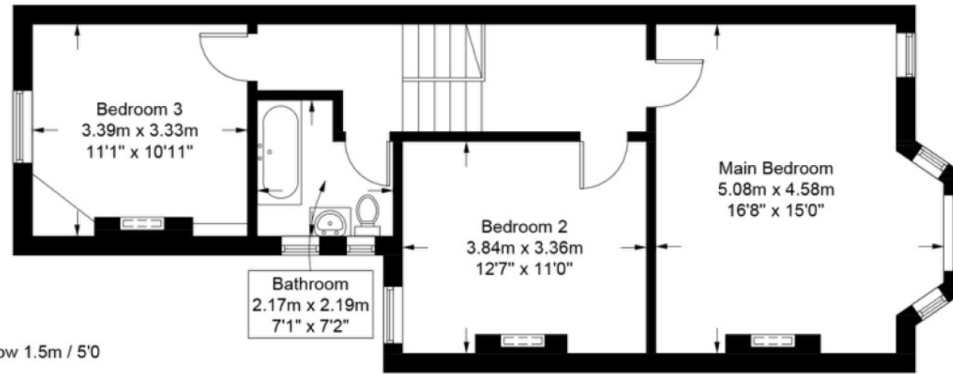
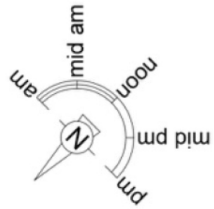




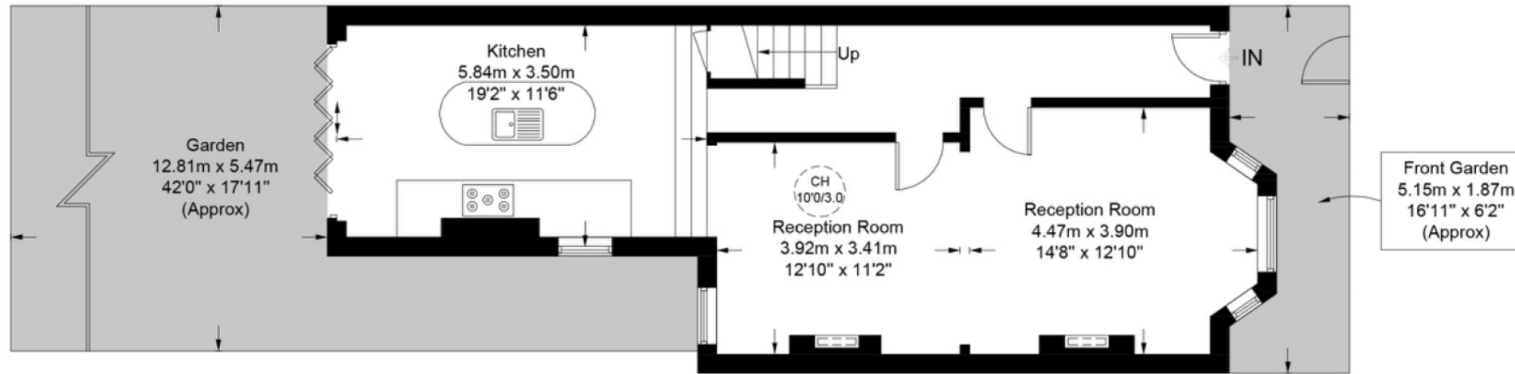
Burns Road, NW10

Approximate Gross Internal Area = 1335 sq ft / 124.0 sq m
(Including Restricted Height)

Restricted Height = 7 sq ft / 0.7 sq m



First Floor



Ground Floor

This plan is for layout guidance only and is not drawn to scale unless stated. All dimensions, including windows, doors, and the Total Gross Internal Area (GIA), are approximate. For precise measurements, please consult a qualified architect or surveyor before making any decisions based on this plan.



Particulars

Property

Burns Road, Harlesden, London, NW10
£825,000

Rooms



2



1



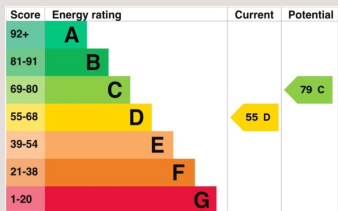
3

Features

- Spacious three bedroom house
- Rich with period details
- Wonderful proportions and high ceilings
- Beautiful rear garden

Information

Council Tax



Oliver Kent

oliver.kent@vitaproperties.uk
+4477 7274 0351



Scan for our website





T: +4420 7759 2199

E: enquiries@vitaproperties.uk

Disclaimer: These particulars are prepared as a general guide for prospective purchasers or tenants and do not constitute, nor constitute part of, an offer or contract. All statements, descriptions, and measurements contained herein are given in good faith and are believed to be correct at the time of printing, but any intending purchaser or tenant should not rely on them as statements or representations of fact and must satisfy themselves by inspection or otherwise as to their correctness. Floor plans and photographs are for illustrative purposes only and may not be to scale. The position and size of doors, windows, appliances, and other features are approximate. Anti-Money Laundering (AML): In line with the Money Laundering, Terrorist Financing and Transfer of Funds Regulations 2017, we are required to carry out customer due diligence checks. Buyers/tenants will be asked to provide proof of identity, address, and source of funds before a sale or rental can be agreed. Data Protection (GDPR): Personal information supplied to Vita Properties will be processed in accordance with the General Data Protection Regulation (GDPR). Your details may be retained for legitimate business purposes relating to property services. Full details of our Privacy Policy are available on request.

All rights reserved.