



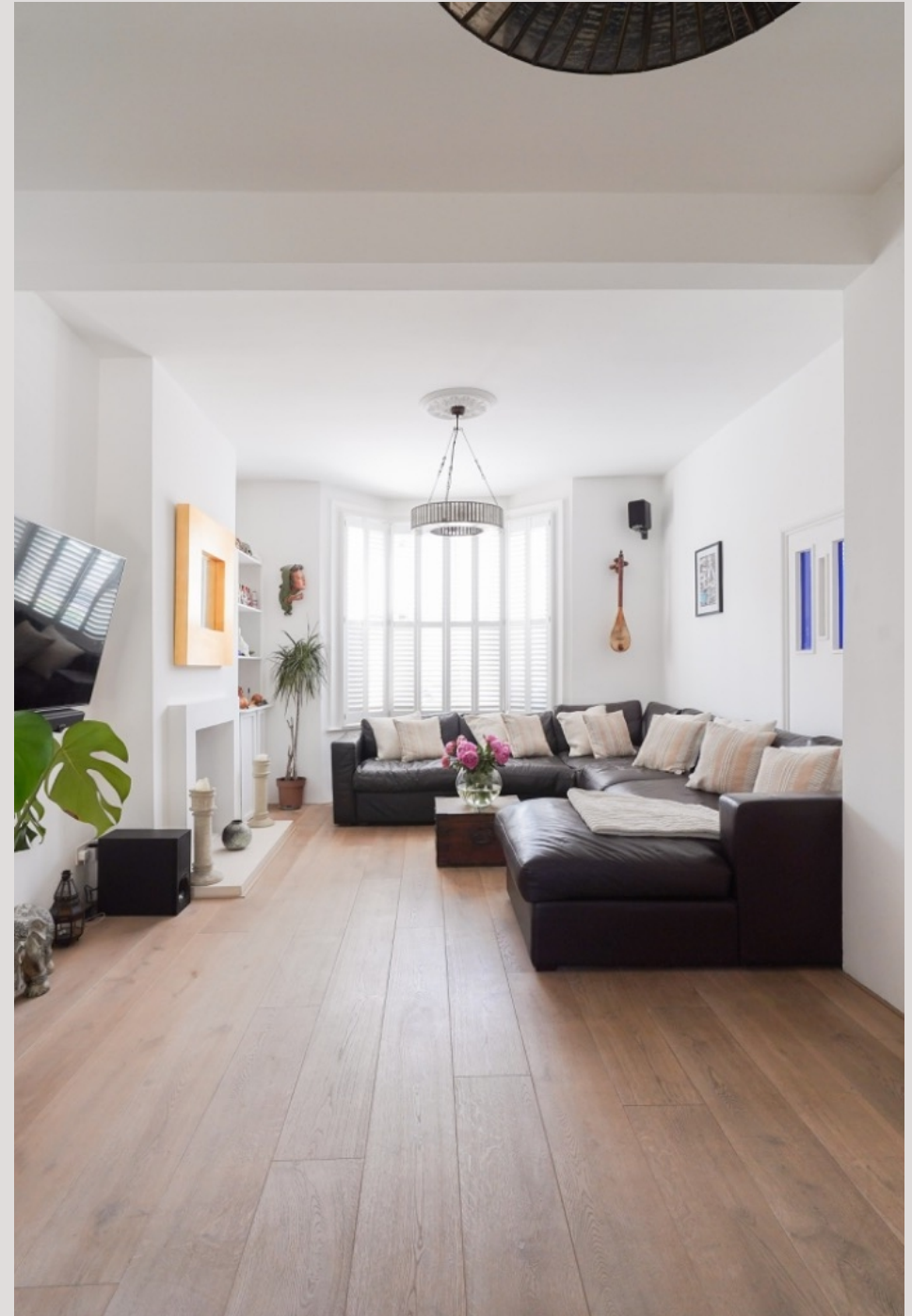
Achilles Road

WEST HAMPSTEAD, LONDON NW6

£2,695,000



Kate Brookfield presents this exceptional five bedroom Victorian house is located on the highly desirable “Greek Roads” in the northern enclave of West Hampstead. Each road is named after a Greek god and is renowned for its impressive family homes, set within one of North West London’s best connected neighbourhoods. Fully extended and presented in excellent condition throughout, the house offers grand entertaining spaces, generous proportions and a beautifully maintained south facing garden.





The ground floor features an elegant double reception room with high ceilings, leading through to an extended open plan kitchen, dining and family space with full-width sliding doors opening onto the garden. A recently installed sleek, handleless kitchen is centred around a three metre island and complemented by a range of premium integrated appliances, including a recirculating BORA induction hob and Bosch double ovens. Underfloor heating runs beneath porcelain floor tiles, which continue seamlessly onto the patio, creating an ideal indoor outdoor living environment. A basement level provides a dedicated utility and laundry area and completes the ground floor accommodation.





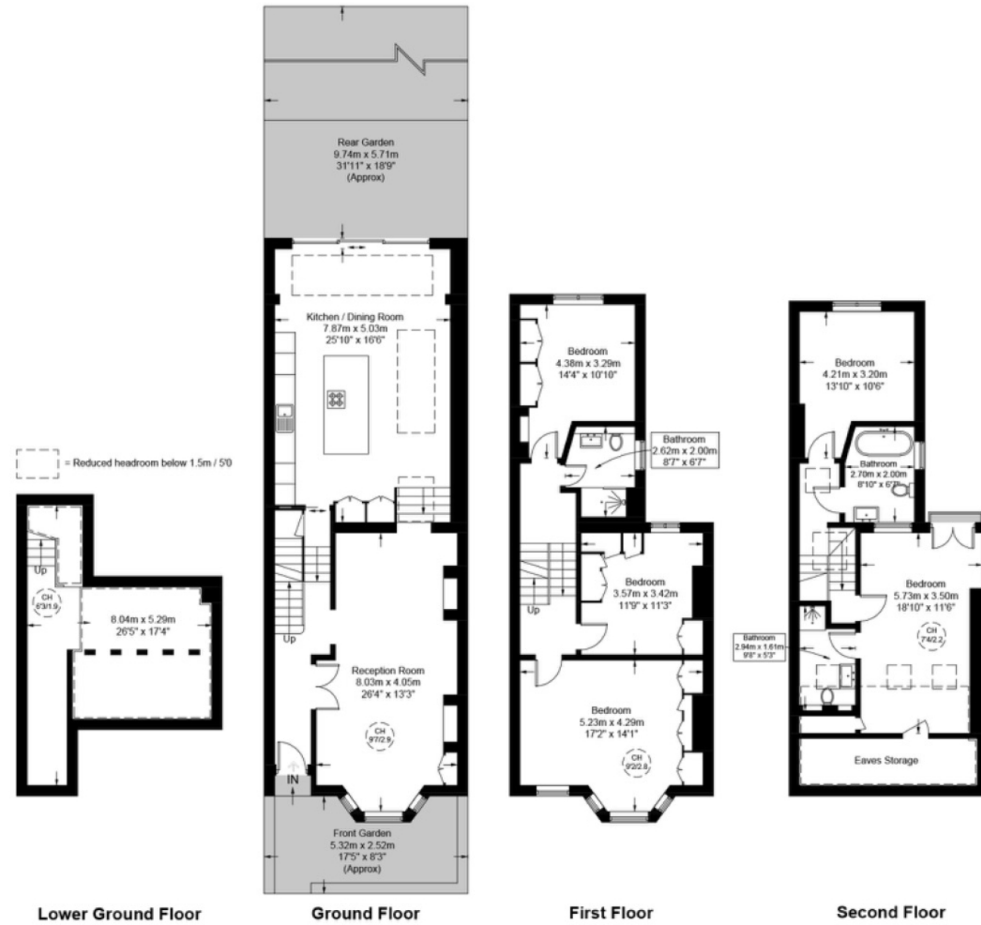
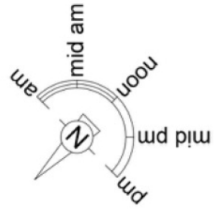




Achilles Road, NW6

Approximate Gross Internal Area = 2440 sq ft / 226.7 sq m
 (Including Restricted Height / Eaves Storage)

Restricted Height / Eaves Storage = 334 sq ft / 31.0 sq m



This plan is for layout guidance only and is not drawn to scale unless stated. All dimensions, including windows, doors, and the Total Gross Internal Area (GIA), are approximate. For precise measurements, please consult a qualified architect or surveyor before making any decisions based on this plan.



Particulars

Property

Achilles Road, West Hampstead, London NW6
£2,695,000

Rooms



2



3



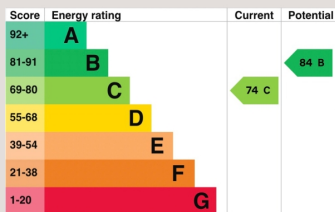
5

Features

- Impressive five bedroom, three bathroom house
- Highly desirable Greek Roads in West Hampstead
- Excellent condition, fully extended
- South facing garden

Information

Council Tax



Kate Brookfield

Kate.brookfield@vitaproperties.uk
+4478 1365 5431



Scan for our website





T: +4420 7759 2199

E: enquiries@vitaproperties.uk

Disclaimer: These particulars are prepared as a general guide for prospective purchasers or tenants and do not constitute, nor constitute part of, an offer or contract. All statements, descriptions, and measurements contained herein are given in good faith and are believed to be correct at the time of printing, but any intending purchaser or tenant should not rely on them as statements or representations of fact and must satisfy themselves by inspection or otherwise as to their correctness. Floor plans and photographs are for illustrative purposes only and may not be to scale. The position and size of doors, windows, appliances, and other features are approximate. Anti-Money Laundering (AML): In line with the Money Laundering, Terrorist Financing and Transfer of Funds Regulations 2017, we are required to carry out customer due diligence checks. Buyers/tenants will be asked to provide proof of identity, address, and source of funds before a sale or rental can be agreed. Data Protection (GDPR): Personal information supplied to Vita Properties will be processed in accordance with the General Data Protection Regulation (GDPR). Your details may be retained for legitimate business purposes relating to property services. Full details of our Privacy Policy are available on request.

All rights reserved.