



## Goldhurst Terrace

SOUTH HAMPSTEAD, LONDON NW6

£2,500,000



265

This four-bedroom garden flat, set within a distinguished period building on Goldhurst Terrace, offers a refined living experience in the heart of South Hampstead. The property immediately impresses with its generous proportions and a thoughtful layout, providing a welcoming atmosphere that resonates with the area's architectural heritage. It is moments from the vibrant local amenities and within easy reach of the green expanses of Hampstead Heath.

The internal living spaces are designed for comfort and style, featuring two spacious reception rooms that provide versatile areas for relaxation and entertaining. These rooms benefit from an abundance of natural light, enhancing the sense of space and calm. The kitchen is well-appointed, complementing the overall quality of the home.

The three bedrooms are well-proportioned, offering peaceful retreats. The property includes two bathrooms, thoughtfully designed to serve the household's needs. This lateral living arrangement ensures a seamless flow throughout the home, appealing to those who appreciate considered design.





Further enhancing this desirable residence is its private garden, providing a tranquil outdoor space. Goldhurst Terrace is ideally situated for access to the Jubilee line at South Hampstead and Finchley Road, as well as the Overground, offering excellent transport links across London. This address truly deserves attention for its blend of period charm and contemporary convenience in a highly sought-after NW6 postcode.



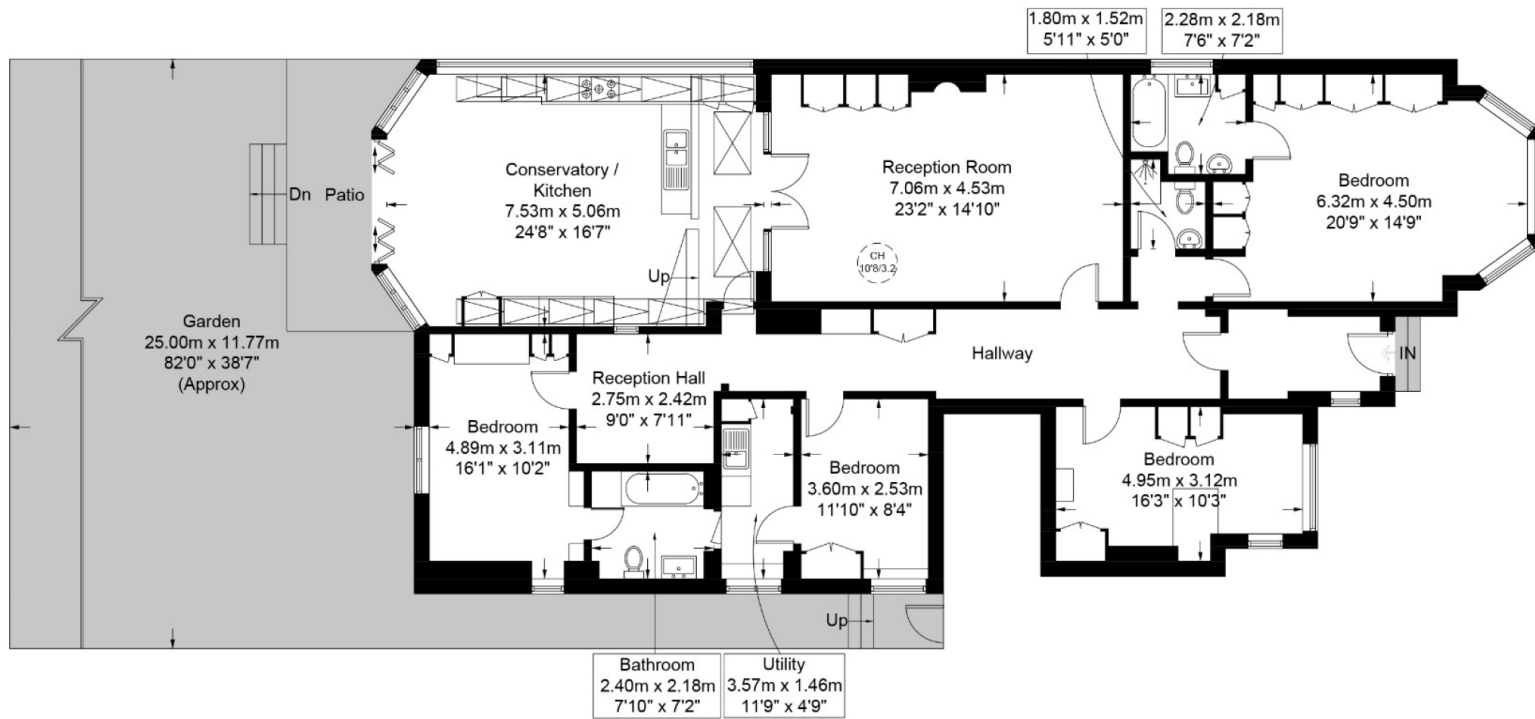
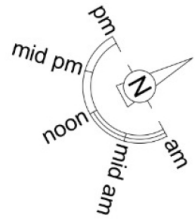






# Goldhurst Terrace, NW6

Approximate Gross Internal Area = 2025 sq ft / 188.1 sq m



This plan is for layout guidance only and is not drawn to scale unless stated. All dimensions, including windows, doors, and the Total Gross Internal Area (GIA), are approximate. For precise measurements, please consult a qualified architect or surveyor before making any decisions based on this plan.



# Particulars

## Property

Goldhurst Terrace, South Hampstead, London NW6  
£2,500,000

## Rooms



2



2



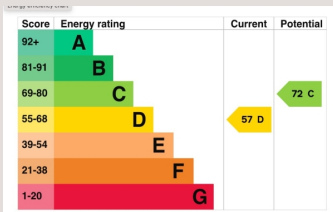
4

## Features

- Period Features Throughout
- Room to Create your own style Home
- South Facing Large Private Garden
- Off Street Parking

## Information

Council Tax



Oliver Kent

oliver.kent@vitaproperties.uk  
+4477 7274 0351



Scan for our website





T: +4420 7759 2199  
E: [enquiries@vitaproperties.uk](mailto:enquiries@vitaproperties.uk)

Disclaimer: These particulars are prepared as a general guide for prospective purchasers or tenants and do not constitute, nor constitute part of, an offer or contract. All statements, descriptions, and measurements contained herein are given in good faith and are believed to be correct at the time of printing, but any intending purchaser or tenant should not rely on them as statements or representations of fact and must satisfy themselves by inspection or otherwise as to their correctness. Floor plans and photographs are for illustrative purposes only and may not be to scale. The position and size of doors, windows, appliances, and other features are approximate. Anti-Money Laundering (AML): In line with the Money Laundering, Terrorist Financing and Transfer of Funds Regulations 2017, we are required to carry out customer due diligence checks. Buyers/tenants will be asked to provide proof of identity, address, and source of funds before a sale or rental can be agreed. Data Protection (GDPR): Personal information supplied to Vita Properties will be processed in accordance with the General Data Protection Regulation (GDPR). Your details may be retained for legitimate business purposes relating to property services. Full details of our Privacy Policy are available on request.

All rights reserved.