



Chalcot Gardens
BELSIZE PARK, LONDON NW3
£11,000



Experience elevated London living in this exceptional duplex penthouse, set within a handsome Victorian building on one of NW3's most desirable tree-lined streets. Perfectly positioned between Primrose Hill and Belsize Park Village, this beautifully designed home offers approximately 1,600 sq ft of stylish accommodation with leafy garden views and an outstanding sense of space.

The heart of the apartment is a stunning double-height living area, flooded with natural light from electric rooflights above. A striking architect-designed staircase, featuring solid timber treads and glass balustrades, creates a dramatic focal point while connecting the two levels with elegance and style.

The open-plan reception, dining and kitchen space is ideal for both relaxing and entertaining. Solid wood flooring, contemporary Crittall-style doors and large rear-facing windows combine to create a bright, sophisticated atmosphere with tranquil green outlooks. The bespoke kitchen, designed by Neil Lerner, is fitted with premium Brandt cabinetry, Siemens appliances, an integrated hot water tap and generous storage, offering both practicality and refined design.





The bedrooms are thoughtfully arranged to provide privacy and comfort, each benefiting from bespoke fitted wardrobes. A dedicated custom-designed workspace makes the apartment equally suited to professionals working remotely. The luxurious bathrooms are finished in natural stone with elegant brass fittings and spa-inspired detailing.

Designed for year-round comfort, the property features underfloor heating, air conditioning throughout, a video entry system and extensive bespoke joinery. Consistently impressive ceiling heights enhance the feeling of openness across both floors.

Combining architectural character, contemporary luxury and a prime location, this remarkable penthouse provides an exceptional short-term rental opportunity in one of North West London's most sought-after neighbourhoods.





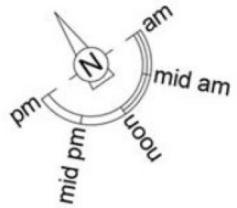





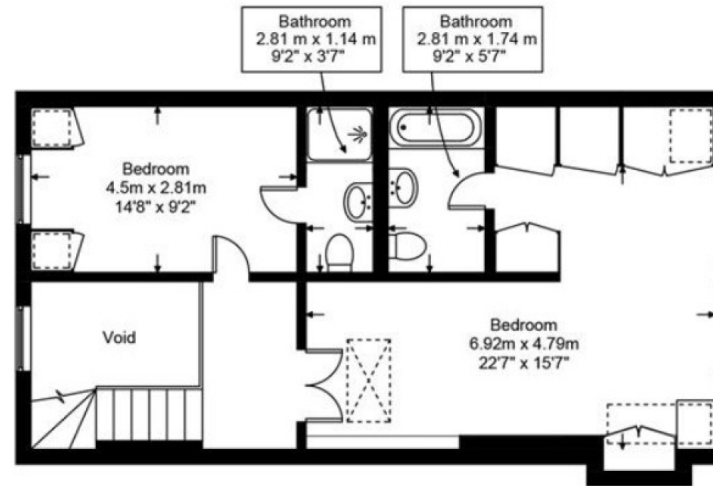
Chalcot Gardens, NW3

Approximate Gross Internal Area = 1612 sq ft / 149.7 sq m
(Including Restricted Height)

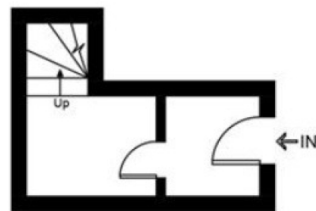
Restricted Height = 28.2 sq ft / 2.62 sq m



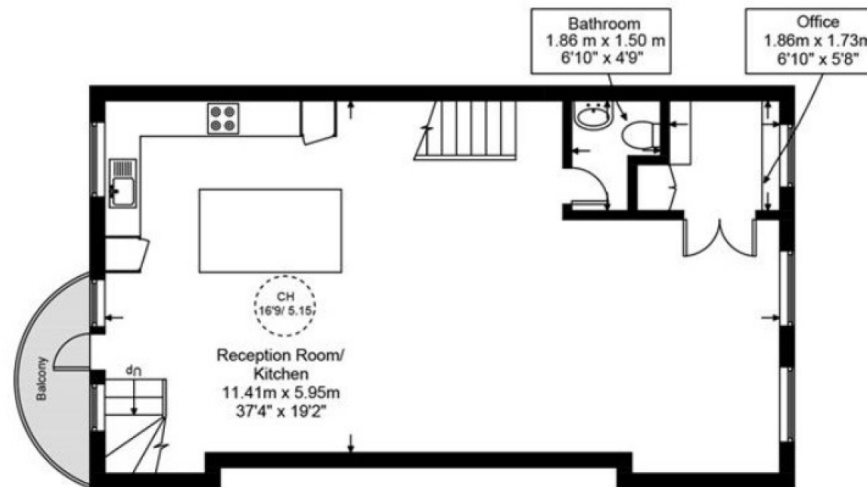
 = Reduced headroom below 1.5m/ 5' 0



Third Floor



First Floor



Second Floor

Particulars

Property

Chalcot Gardens, Belsize Park, London NW3
£11,000

Rooms



2



2



2

Features

- A volume-led duplex penthouse
- Chalcot Gardens seconds to Englands Lane
- Views across London
- Period conversion

Information

Council Tax



Oliver Kent

oliver.kent@vitaproperties.uk
+4477 7274 0351



Scan for our website





T: +4420 7759 2199

E: enquiries@vitaproperties.uk

Disclaimer: These particulars are prepared as a general guide for prospective purchasers or tenants and do not constitute, nor constitute part of, an offer or contract. All statements, descriptions, and measurements contained herein are given in good faith and are believed to be correct at the time of printing, but any intending purchaser or tenant should not rely on them as statements or representations of fact and must satisfy themselves by inspection or otherwise as to their correctness. Floor plans and photographs are for illustrative purposes only and may not be to scale. The position and size of doors, windows, appliances, and other features are approximate. Anti-Money Laundering (AML): In line with the Money Laundering, Terrorist Financing and Transfer of Funds Regulations 2017, we are required to carry out customer due diligence checks. Buyers/tenants will be asked to provide proof of identity, address, and source of funds before a sale or rental can be agreed. Data Protection (GDPR): Personal information supplied to Vita Properties will be processed in accordance with the General Data Protection Regulation (GDPR). Your details may be retained for legitimate business purposes relating to property services. Full details of our Privacy Policy are available on request.

All rights reserved.