



Howard Road

CRICKLEWOOD, LONDON, NW2

£1,000,000



Guide price £1,000,000 - £1,100,000

Renovated & Extended Four Bedroom Victorian House in Cricklewood NW2

A beautifully designed and extensively renovated four bedroom Victorian mid terrace house, ideally situated in this highly convenient location just moments from Cricklewood Broadway and within easy walking distance of Willesden Green.

Presented in immaculate condition throughout, this exceptional home has been thoughtfully reimaged to combine elegant period character with contemporary design and high quality finishes.





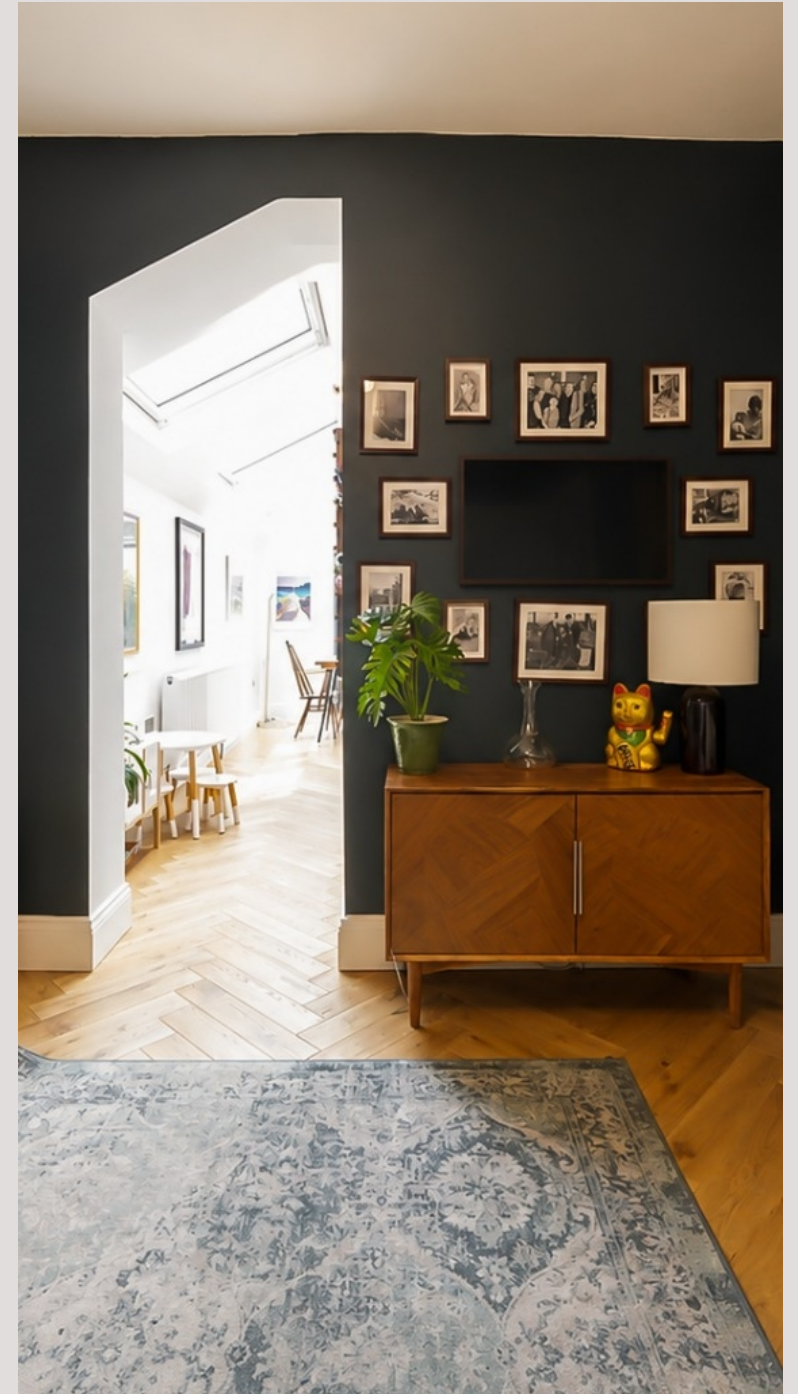
The ground floor offers an elegant front reception room featuring a beautiful fireplace, bespoke fitted shelving and impressive high ceilings. A second reception room sits at the heart of the house, creating a flexible living space that flows seamlessly into the stunning kitchen/dining room at the rear. Designed with entertaining in mind, the classic shaker style kitchen features a large breakfast island, premium integrated appliances and skylights above the side return extension, while a full wall of bi-fold doors opens onto the south facing garden, filling the space with natural light.

The landscaped rear garden has been designed with simplicity and ease of maintenance in mind, featuring a generous patio, lawn and a row of ornamental trees along the rear boundary. A stylish shower room with guest WC and extensive fitted storage in the hallway complete the ground floor.





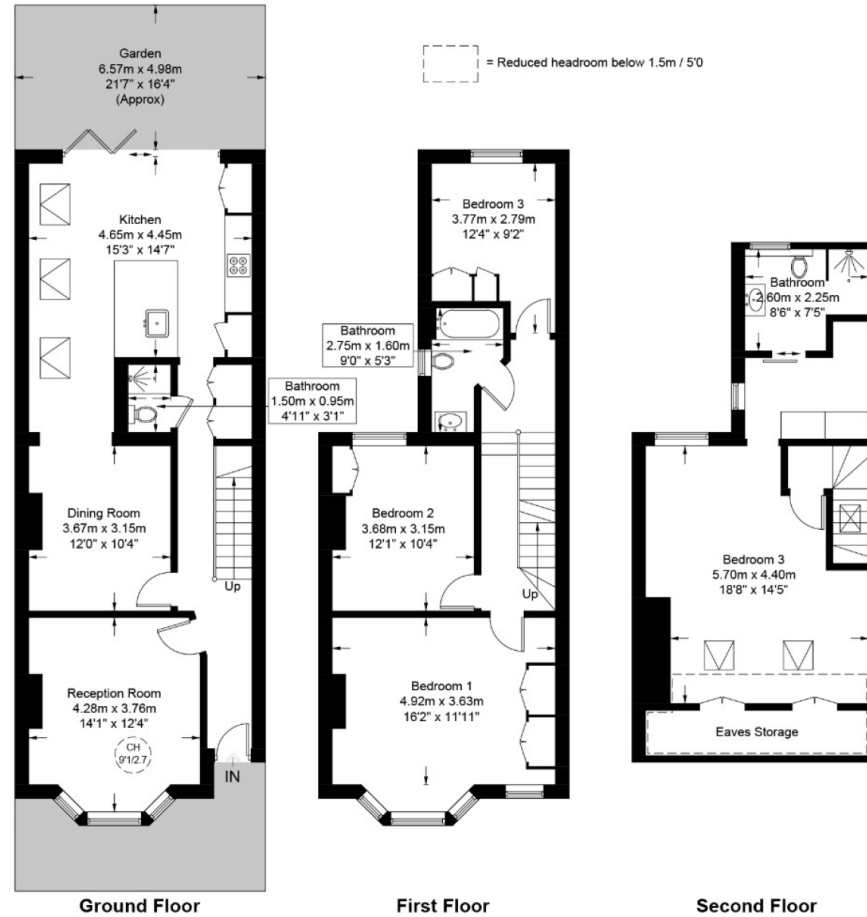
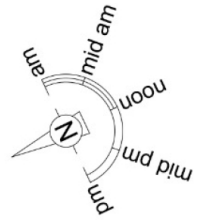




# Howard Road, NW2

**Approximate Gross Internal Area = 1832 sq ft / 170.2 sq m**  
 (Including Restricted Height / Eaves Storage)

**Restricted Height = 91 sq ft / 8.5 sq m**



This plan is for layout guidance only and is not drawn to scale unless stated. All dimensions, including windows, doors, and the Total Gross Internal Area (GIA), are approximate. For precise measurements, please consult a qualified architect or surveyor before making any decisions based on this plan.



# Particulars

## Property

Howard Road, Cricklewood, London, NW2  
£1,000,000

## Rooms



3



3



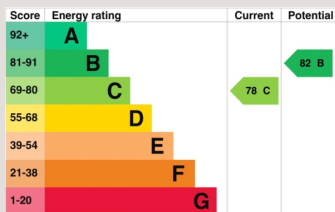
4

## Features

- Beautifully designed four bedroom, three bathroom house
- South facing garden
- Classic interiors, immaculately presented
- Three ground floor living spaces

## Information

Council Tax



Oliver Kent

oliver.kent@vitaproperties.uk  
+4477 7274 0351



Scan for our website





T: +4420 7759 2199  
E: [enquiries@vitaproperties.uk](mailto:enquiries@vitaproperties.uk)

Disclaimer: These particulars are prepared as a general guide for prospective purchasers or tenants and do not constitute, nor constitute part of, an offer or contract. All statements, descriptions, and measurements contained herein are given in good faith and are believed to be correct at the time of printing, but any intending purchaser or tenant should not rely on them as statements or representations of fact and must satisfy themselves by inspection or otherwise as to their correctness. Floor plans and photographs are for illustrative purposes only and may not be to scale. The position and size of doors, windows, appliances, and other features are approximate. Anti-Money Laundering (AML): In line with the Money Laundering, Terrorist Financing and Transfer of Funds Regulations 2017, we are required to carry out customer due diligence checks. Buyers/tenants will be asked to provide proof of identity, address, and source of funds before a sale or rental can be agreed. Data Protection (GDPR): Personal information supplied to Vita Properties will be processed in accordance with the General Data Protection Regulation (GDPR). Your details may be retained for legitimate business purposes relating to property services. Full details of our Privacy Policy are available on request.

All rights reserved.