



Parsifal Road

WEST HAMPSTEAD, LONDON NW6

£2,000



This modern one bedroom apartment, quietly positioned on Parsifal Road, offers a refined living experience within the desirable West Hampstead area. The property presents a contemporary aesthetic throughout, providing a comfortable and stylish home for a discerning tenant. Its private entrance enhances the sense of exclusivity, a notable feature for urban living.

The interior spaces are designed for ease and comfort, featuring a generous reception room that provides ample space for relaxation and entertaining. The kitchen is well-equipped, complementing the modern feel of the apartment. Fitted storage solutions are integrated seamlessly, ensuring a clutter-free environment and maximising the use of space. The apartment comprises a well-proportioned bedroom and a contemporary bathroom, both finished to a high standard. The thoughtful layout ensures a practical and inviting atmosphere. Further enhancing its appeal, the property benefits from off street parking for one car, a significant advantage in this sought-after London postcode.





Located moments from West Hampstead's vibrant array of cafés, independent shops, and essential transport links, including the Jubilee line and Overground, this apartment offers exceptional connectivity and local amenities. It is available for occupancy from September 2026, presenting an excellent opportunity to reside in a prime NW6 location.



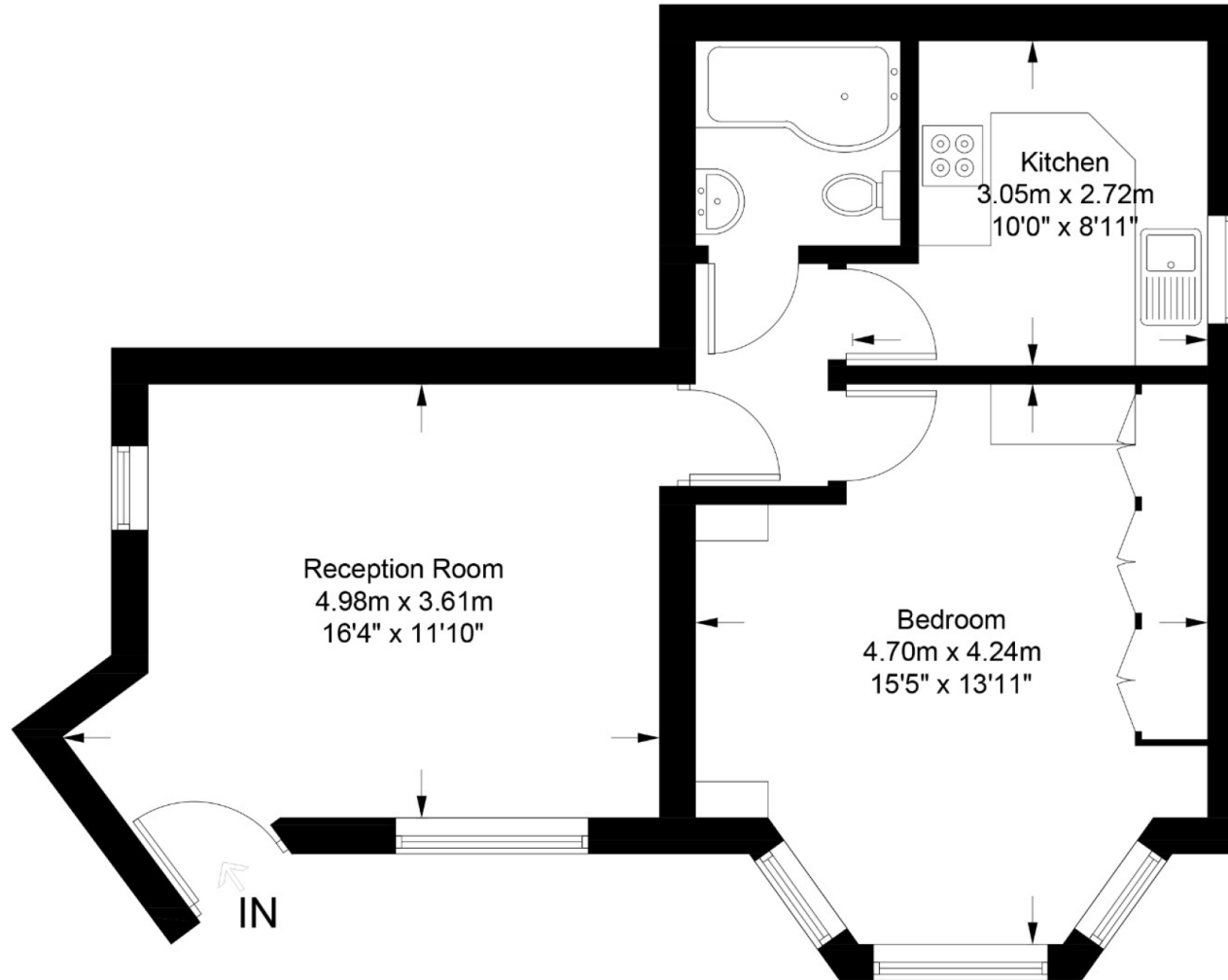






Parsifal Road, NW6

Approximate Gross Internal Area = 510 sq ft / 47.4 sq m



Ground Floor

This plan is for layout guidance only. Not drawn to scale unless stated. Windows and door openings are approximate. Whilst every care is taken in the preparation of this plan, please check all dimensions, shapes and compass bearings before making any decisions reliant upon them. (ID727622)

Particulars

Property

Parsifal Road, West Hampstead, London NW6
£2,000

Rooms

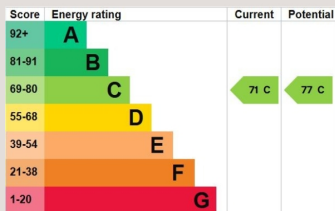


Features

- Modern Throughout
- Off Street Parking For One Car
- Fitted Storage
- Private Entrance

Information

Council Tax



Oliver Kent

oliver.kent@vitaproperties.uk
+4477 7274 0351



Scan for our website





T: +4420 7759 2199
E: enquiries@vitaproperties.uk

Disclaimer: These particulars are prepared as a general guide for prospective purchasers or tenants and do not constitute, nor constitute part of, an offer or contract. All statements, descriptions, and measurements contained herein are given in good faith and are believed to be correct at the time of printing, but any intending purchaser or tenant should not rely on them as statements or representations of fact and must satisfy themselves by inspection or otherwise as to their correctness. Floor plans and photographs are for illustrative purposes only and may not be to scale. The position and size of doors, windows, appliances, and other features are approximate. Anti-Money Laundering (AML): In line with the Money Laundering, Terrorist Financing and Transfer of Funds Regulations 2017, we are required to carry out customer due diligence checks. Buyers/tenants will be asked to provide proof of identity, address, and source of funds before a sale or rental can be agreed. Data Protection (GDPR): Personal information supplied to Vita Properties will be processed in accordance with the General Data Protection Regulation (GDPR). Your details may be retained for legitimate business purposes relating to property services. Full details of our Privacy Policy are available on request.

All rights reserved.