



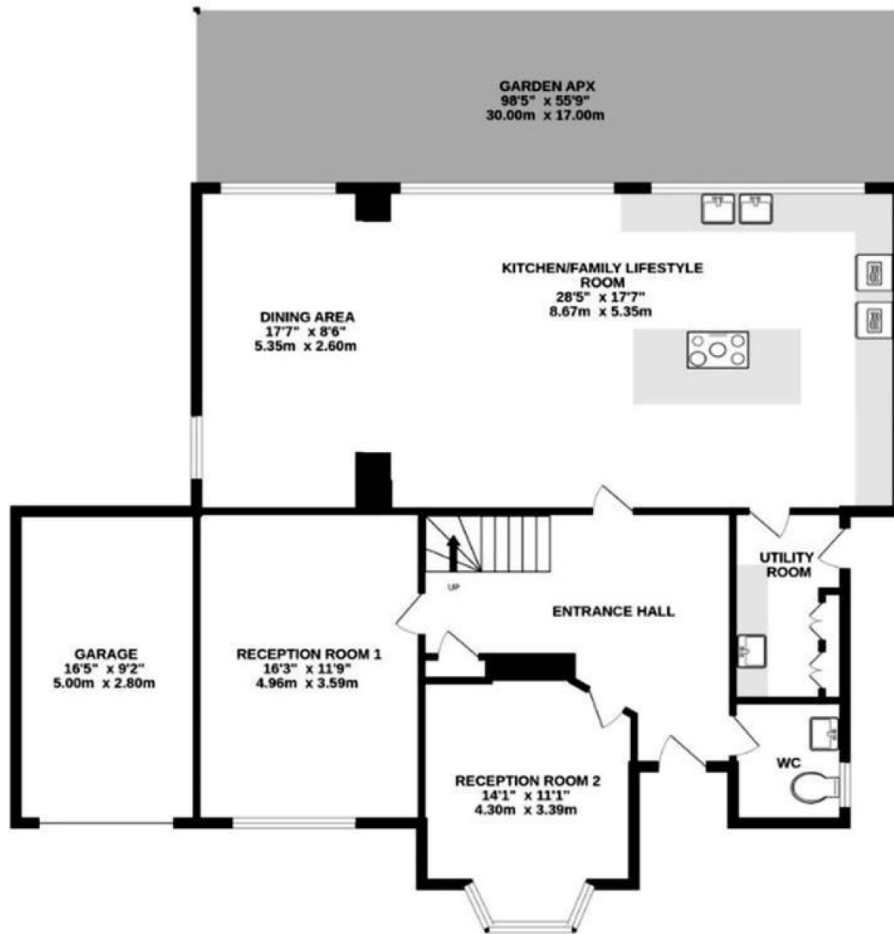
Letchmore Road  
RADLETT, HERTFORDSHIRE WD7

£1,850,000

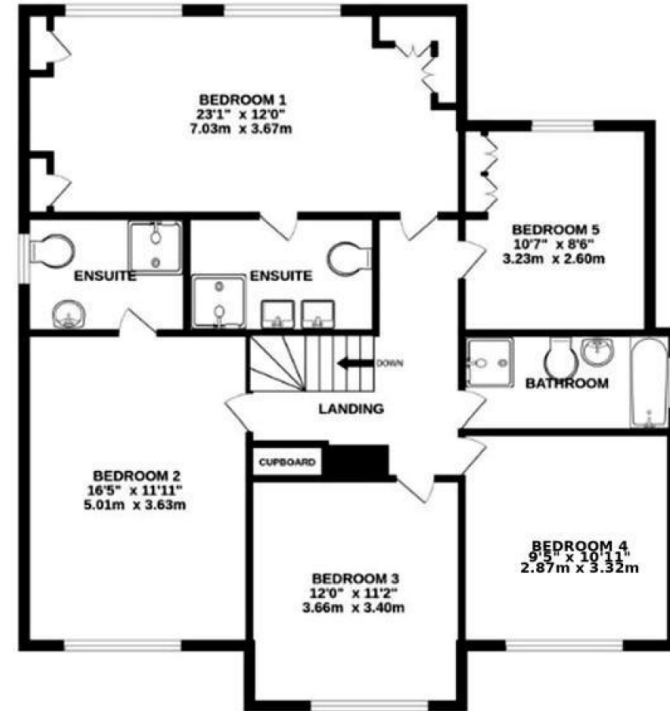
*Shh!*  
Off Market  
Property

VITA  
*Properties*

**GROUND FLOOR**  
1368 sq.ft. (127.1 sq.m.) approx.



**1ST FLOOR**  
1092 sq.ft. (101.5 sq.m.) approx.



**TOTAL FLOOR AREA : 2460 sq.ft. (228.5 sq.m.) approx.**

Whilst every attempt has been made to ensure the accuracy of the floorplan contained here, measurements of doors, windows, rooms and any other items are approximate and no responsibility is taken for any error, omission or mis-statement. This plan is for illustrative purposes only and should be used as such by any prospective purchaser. The services, systems and appliances shown have not been tested and no guarantee as to their operability or efficiency can be given.

Made with Metropix ©2025



# Particulars

## Property

Letchmore Road, Radlett, Hertfordshire WD7  
£1,850,000

## Rooms



4



3



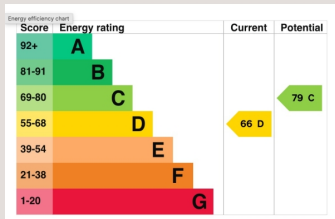
5

## Features

- Detached family home on sought-after Letchmore Road
- Approximately 2,460 sq. ft. of accommodation
- Four bedrooms plus study/occasional fifth bedroom
- Two generous reception rooms

## Information

Council Tax



Oliver Kent

oliver.kent@vitaproperties.uk  
+4477 7274 0351



Scan for our website





T: +4420 7759 2199  
E: [enquiries@vitaproperties.uk](mailto:enquiries@vitaproperties.uk)

Disclaimer: These particulars are prepared as a general guide for prospective purchasers or tenants and do not constitute, nor constitute part of, an offer or contract. All statements, descriptions, and measurements contained herein are given in good faith and are believed to be correct at the time of printing, but any intending purchaser or tenant should not rely on them as statements or representations of fact and must satisfy themselves by inspection or otherwise as to their correctness. Floor plans and photographs are for illustrative purposes only and may not be to scale. The position and size of doors, windows, appliances, and other features are approximate. Anti-Money Laundering (AML): In line with the Money Laundering, Terrorist Financing and Transfer of Funds Regulations 2017, we are required to carry out customer due diligence checks. Buyers/tenants will be asked to provide proof of identity, address, and source of funds before a sale or rental can be agreed. Data Protection (GDPR): Personal information supplied to Vita Properties will be processed in accordance with the General Data Protection Regulation (GDPR). Your details may be retained for legitimate business purposes relating to property services. Full details of our Privacy Policy are available on request.

All rights reserved.