



Goldney Road
MAIDA VALE. LONDON W9

£1,600,000



Boasting over 1,600 sq ft of refined living space, this luxurious home is truly one of a kind. The standout feature is an expansive wraparound terrace offering stunning rooftop views, perfect for entertaining or relaxing in privacy. A private elevator opens directly into the apartment, adding an exclusive touch to everyday living.

Inside, the home is thoughtfully designed to highlight the generous open-plan living and dining area, framed by multiple sliding doors that seamlessly connect the indoors to the terrace. The principal bedroom suite includes dual dressing areas and a luxurious en suite bathroom, while the second bedroom also benefits from its own en suite facilities.

This penthouse combines space, style, and sophistication in a prime Maida Vale location. A rare offering in one of West London's most desirable neighbourhoods.





Boasting over 1,600 sq ft of refined living space, this luxurious home is truly one of a kind. The standout feature is an expansive wraparound terrace offering stunning rooftop views, perfect for entertaining or relaxing in privacy. A private elevator opens directly into the apartment, adding an exclusive touch to everyday living.

Inside, the home is thoughtfully designed to highlight the generous open-plan living and dining area, framed by multiple sliding doors that seamlessly connect the indoors to the terrace. The principal bedroom suite includes dual dressing areas and a luxurious en suite bathroom, while the second bedroom also benefits from its own en suite facilities.

This penthouse combines space, style, and sophistication in a prime Maida Vale location. A rare offering in one of West London's most desirable neighbourhoods.









Scan for out video walkthrough

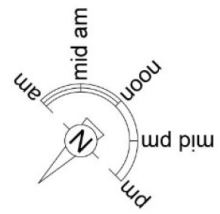


Goldney Road, W9

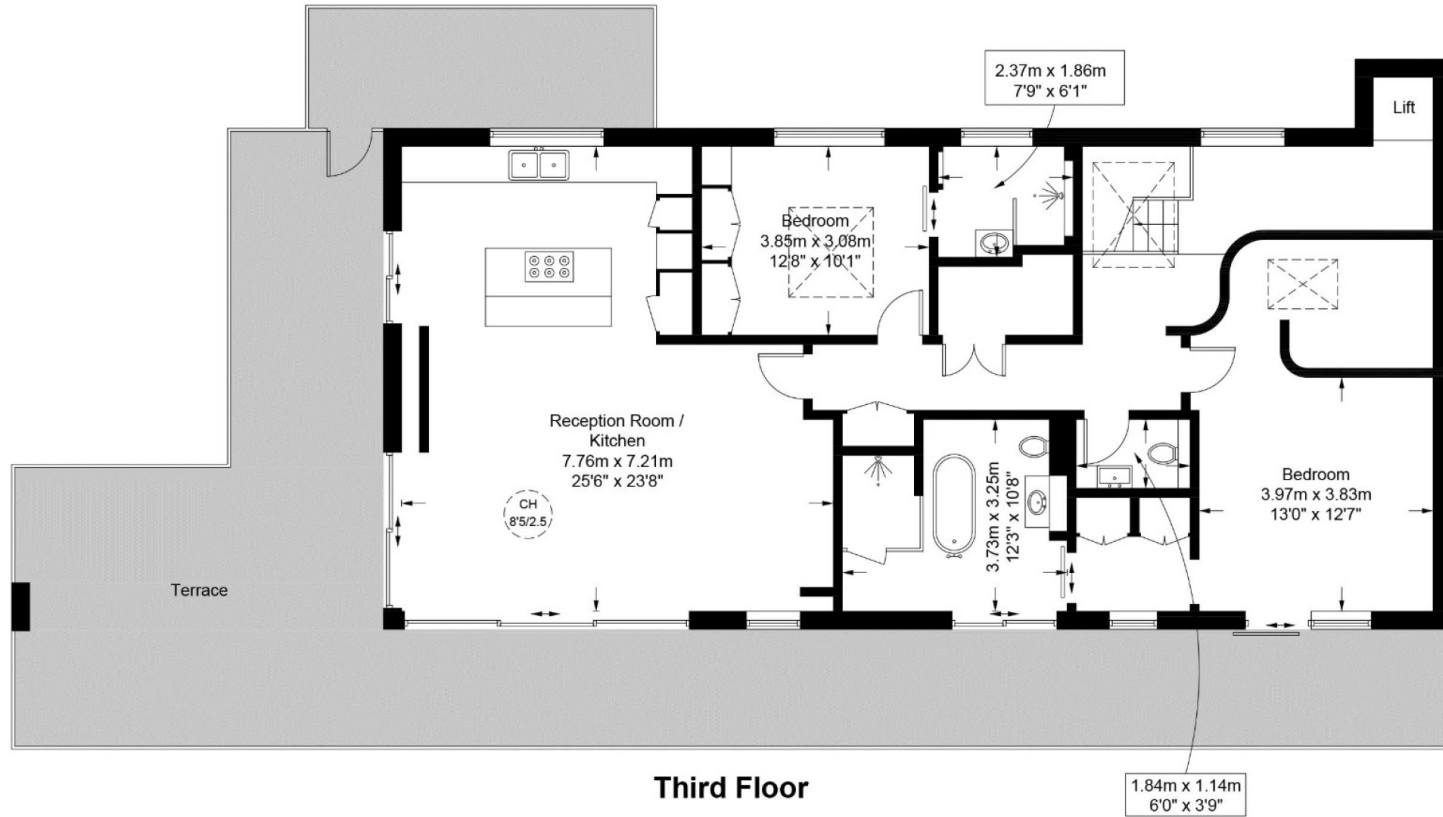
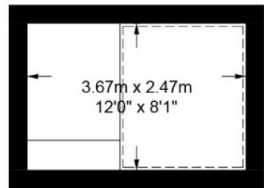
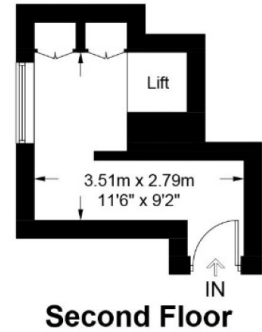
Approximate Gross Internal Area = 1665 sq ft / 154.7 sq m

Restricted Height = 54 sq ft / 5.0 sq m

Cellar = 96 sq ft / 8.9 sq m



= Reduced headroom below 1.5m / 5'0"



This plan is for layout guidance only and is not drawn to scale unless stated. All dimensions, including windows, doors, and the Total Gross Internal Area (GIA), are approximate. For precise measurements, please consult a qualified architect or surveyor before making any decisions based on this plan.



Particulars

Property

Goldney Road, Maida Vale. London W9
£1,600,000

Rooms



Features

- Rare offering in prime Maida Vale W9
- Penthouse with private elevator
- Incredible wrap around terrace
- Generous open plan living space

Information

Council Tax



Oliver Kent

oliver.kent@vitaproperties.uk
+4477 7274 0351



Scan for our website





T: +4420 7759 2199

E: enquiries@vitaproperties.uk

Disclaimer: These particulars are prepared as a general guide for prospective purchasers or tenants and do not constitute, nor constitute part of, an offer or contract. All statements, descriptions, and measurements contained herein are given in good faith and are believed to be correct at the time of printing, but any intending purchaser or tenant should not rely on them as statements or representations of fact and must satisfy themselves by inspection or otherwise as to their correctness. Floor plans and photographs are for illustrative purposes only and may not be to scale. The position and size of doors, windows, appliances, and other features are approximate. Anti-Money Laundering (AML): In line with the Money Laundering, Terrorist Financing and Transfer of Funds Regulations 2017, we are required to carry out customer due diligence checks. Buyers/tenants will be asked to provide proof of identity, address, and source of funds before a sale or rental can be agreed. Data Protection (GDPR): Personal information supplied to Vita Properties will be processed in accordance with the General Data Protection Regulation (GDPR). Your details may be retained for legitimate business purposes relating to property services. Full details of our Privacy Policy are available on request.

All rights reserved.