



## Watling Mansions

WATLING STREET, RADLETT, HERTFORDSHIRE, WD7 7NA

£500,000



This elegant two-bedroom apartment resides within Watling Mansions, a purpose-built block positioned in the very heart of Radlett Village. The property offers a refined living experience, thoughtfully designed for comfort and convenience, reflecting a confident sense of place within this desirable Hertfordshire locale.

The apartment features a generous reception room, providing an inviting space for relaxation and entertaining. The layout flows seamlessly, creating an atmosphere of understated sophistication. The kitchen is appointed with modern conveniences, complementing the overall quality of the residence.

Two well-proportioned bedrooms offer comfortable private retreats, accompanied by two contemporary bathrooms. An exceptional feature of this property is its private terrace, offering a tranquil outdoor space for quiet enjoyment. Residents also benefit from access to beautifully maintained communal gardens, enhancing the sense of community and green space.

Further enhancing its appeal, the apartment includes a valuable underground parking space. Watling Mansions is moments from Radlett High Street, providing immediate access to an array of local shops, cafes, and essential transport links, connecting residents effortlessly to wider





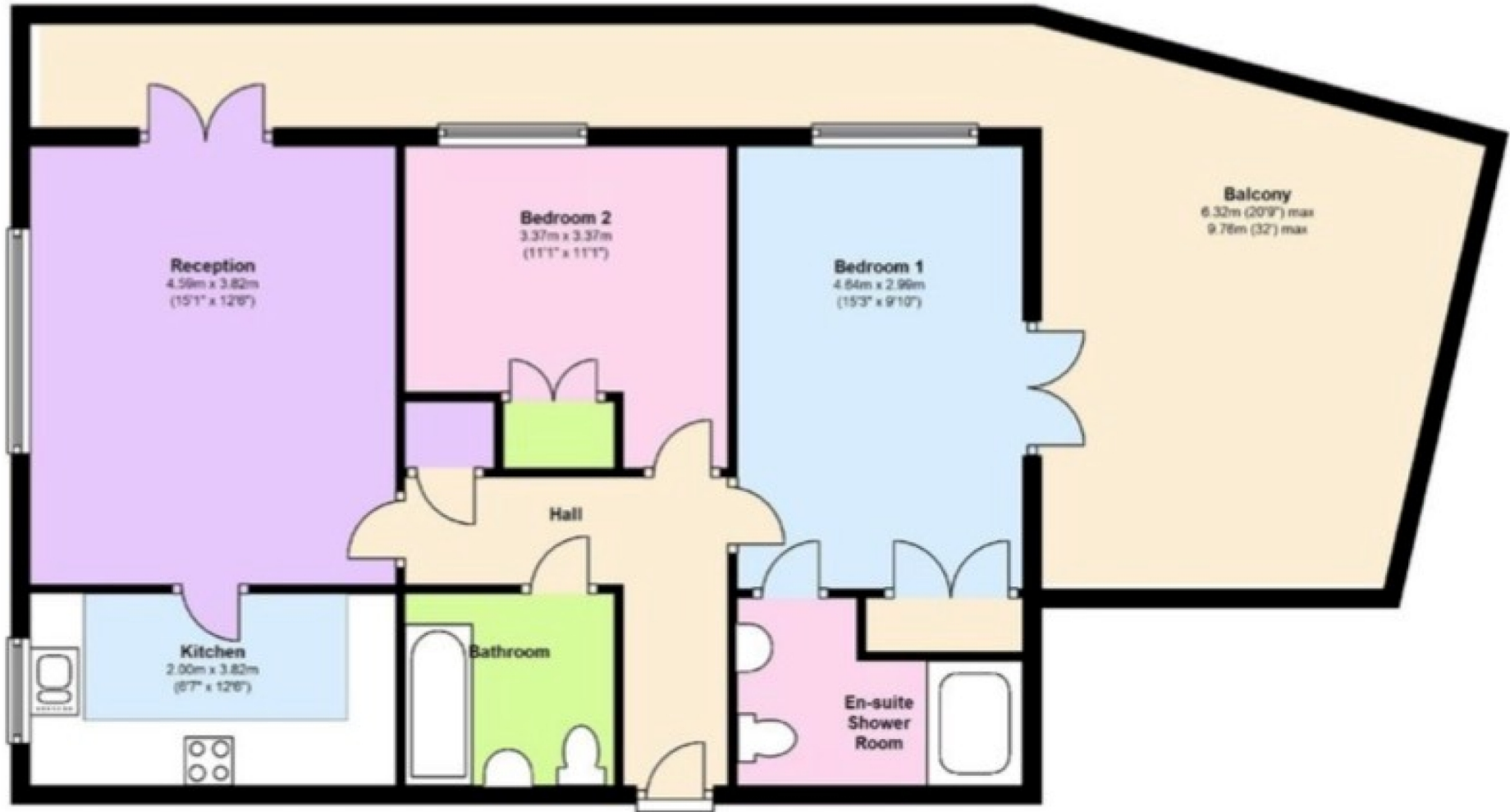






### Ground Floor

Approx. 101.0 sq. metres (1086.8 sq. feet)



# Particulars

## Property

Watling Mansions, Watling Street, Radlett, Hertfordshire,  
~~£300,000~~

## Rooms

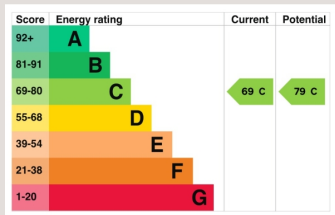


## Features

- Underground Parking Space
- Private Terrace & Communal Gardens
- Moments to Radlett High Street, Shops and Transport
- Purpose built block in the heart of Radlett Village

## Information

Council Tax



Oliver Kent

oliver.kent@vitaproperties.uk  
+4477 7274 0351



Scan for our website





T: +4420 7759 2199  
E: [enquiries@vitaproperties.uk](mailto:enquiries@vitaproperties.uk)

Disclaimer: These particulars are prepared as a general guide for prospective purchasers or tenants and do not constitute, nor constitute part of, an offer or contract. All statements, descriptions, and measurements contained herein are given in good faith and are believed to be correct at the time of printing, but any intending purchaser or tenant should not rely on them as statements or representations of fact and must satisfy themselves by inspection or otherwise as to their correctness. Floor plans and photographs are for illustrative purposes only and may not be to scale. The position and size of doors, windows, appliances, and other features are approximate. Anti-Money Laundering (AML): In line with the Money Laundering, Terrorist Financing and Transfer of Funds Regulations 2017, we are required to carry out customer due diligence checks. Buyers/tenants will be asked to provide proof of identity, address, and source of funds before a sale or rental can be agreed. Data Protection (GDPR): Personal information supplied to Vita Properties will be processed in accordance with the General Data Protection Regulation (GDPR). Your details may be retained for legitimate business purposes relating to property services. Full details of our Privacy Policy are available on request.

All rights reserved.