



Frognal

HAMPSTEAD LONDON, NW3

£900,000



Located within the prestigious Frognal area, this elegant three bedroom period conversion presents a rare opportunity to acquire a home of distinction. Reflecting the architectural character of its surroundings, this apartment offers a refined living experience, moments from the vibrant heart of Hampstead Village and its renowned amenities. The heart of this exceptional residence is the impressive 31-foot reception room, featuring a thoughtfully appointed raised dining area, perfect for entertaining. The space is enhanced by beautiful wooden flooring throughout, contributing to the property's premium feel and period proportions. An abundance of natural light further elevates the generous living areas.

This charming home comprises three well-proportioned bedrooms and two contemporary bathrooms, providing comfortable and private accommodation. Each space has been carefully considered to complement the overall elegance of the apartment, ensuring a harmonious blend of classic charm and modern convenience.

Adding to its allure, the property benefits from a private south-facing patio garden, offering a tranquil outdoor retreat. Located in Frognal, within easy reach of the Northern Line at Hampstead and the Jubilee Line at Finchley Road, this share of freehold apartment provides







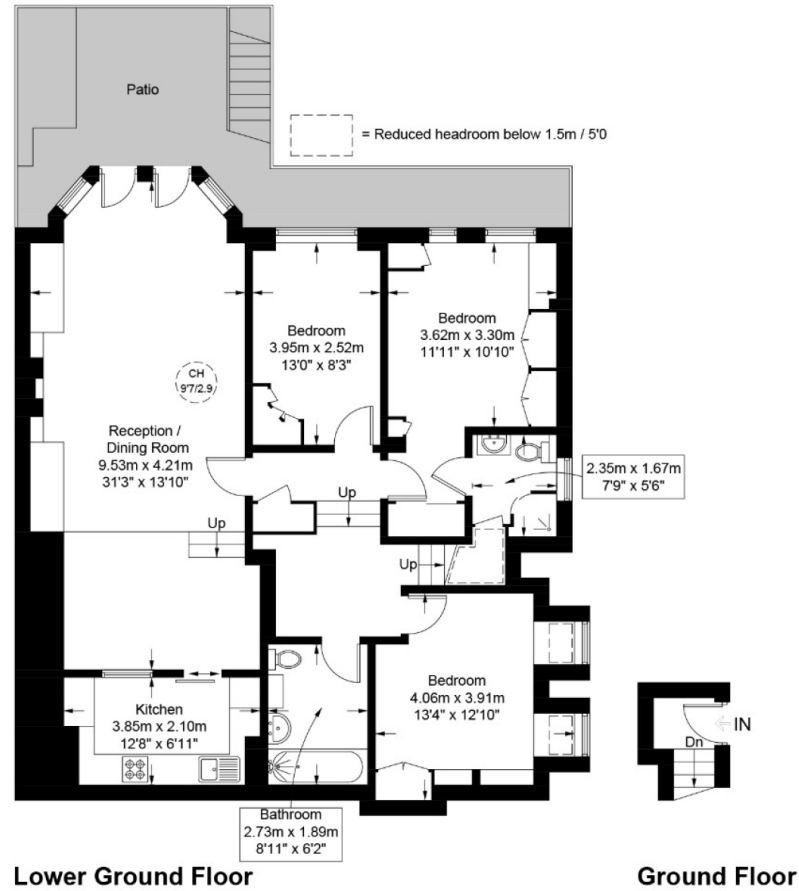
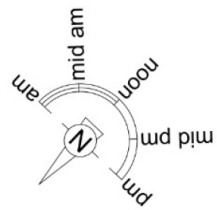




Frognal, NW3

Approximate Gross Internal Area = 1189 sq ft / 110.5 sq m

Restricted Height = 1.9 sq ft / 20 sq m



This plan is for layout guidance only and is not drawn to scale unless stated. All dimensions, including windows, doors, and the Total Gross Internal Area (GIA), are approximate. For precise measurements, please consult a qualified architect or surveyor before making any decisions based on this plan.



Particulars

Property

Frognaal, Hampstead London, NW3
£900,000

Rooms



2



2



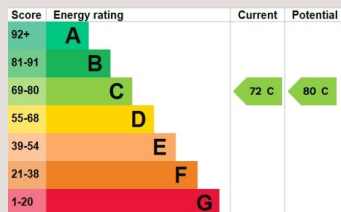
3

Features

- Private South Facing Patio Garden.
- 31' Reception Room with Raised Dining Area
- Wooden Flooring Throughout
- Period Conversion

Information

Council Tax



Oliver Kent

oliver.kent@vitaproperties.uk
+4477 7274 0351



Scan for our website





T: +4420 7759 2199

E: enquiries@vitaproperties.uk

Disclaimer: These particulars are prepared as a general guide for prospective purchasers or tenants and do not constitute, nor constitute part of, an offer or contract. All statements, descriptions, and measurements contained herein are given in good faith and are believed to be correct at the time of printing, but any intending purchaser or tenant should not rely on them as statements or representations of fact and must satisfy themselves by inspection or otherwise as to their correctness. Floor plans and photographs are for illustrative purposes only and may not be to scale. The position and size of doors, windows, appliances, and other features are approximate. Anti-Money Laundering (AML): In line with the Money Laundering, Terrorist Financing and Transfer of Funds Regulations 2017, we are required to carry out customer due diligence checks. Buyers/tenants will be asked to provide proof of identity, address, and source of funds before a sale or rental can be agreed. Data Protection (GDPR): Personal information supplied to Vita Properties will be processed in accordance with the General Data Protection Regulation (GDPR). Your details may be retained for legitimate business purposes relating to property services. Full details of our Privacy Policy are available on request.

All rights reserved.