



Rosecroft Avenue
HAMPSTEAD, LONDON NW3

£650,000



53
No parking
any time

P
Permitted
Monday - Friday
8.00 - 5.30pm

H

ROSECROFT AVENUE NW3

Charming Two-Bedroom Flat with Balcony ? In Need of Refurbishment ? Prime Hampstead Location

Set on the highly sought-after Rosecroft Avenue in Hampstead, NW3, this spacious two-bedroom apartment offers a fantastic opportunity for buyers looking to refurbish and create a bespoke home in one of London's most desirable neighborhoods.

Positioned just moments from Hampstead Heath, the property benefits from a peaceful residential setting while being within easy reach of Hampstead Village's boutique shops, cafes, and excellent transport links.

Key Features:

- **Two Double Bedrooms** ? Generously proportioned and filled with natural light
- **Reception Room** ? Bright and airy with access to a **Private Balcony**
- **Separate Kitchen** ? Offering potential for modernisation or reconfiguration
- **Private Balcony** ? Ideal for morning coffee or evening relaxation





- ****Share of Freehold**** ? Offering greater control and long-term value

While the property requires updating throughout, it presents an exciting blank canvas to craft a stylish, comfortable home in a tranquil yet connected location.

Don't miss this rare chance to secure a property with incredible potential in one of Hampstead's most prestigious streets.





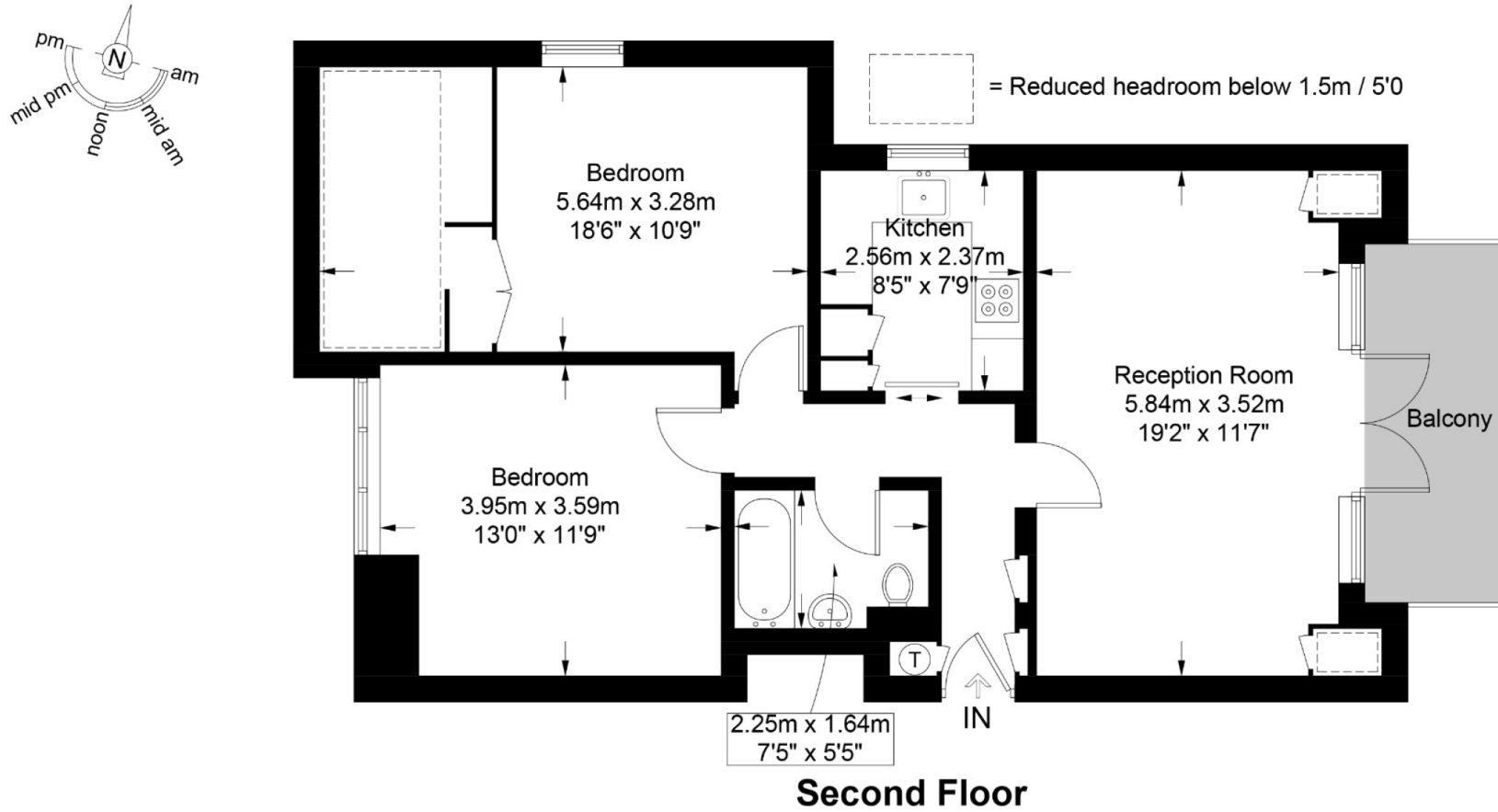




Rosecroft Avenue, NW3

Approximate Gross Internal Area = 786 sq ft / 73.0 sq m

Restricted Height = 60 sq ft / 5.6 sq m



This plan is for layout guidance only and is not drawn to scale unless stated. All dimensions, including windows, doors, and the Total Gross Internal Area (GIA), are approximate. For precise measurements, please consult a qualified architect or surveyor before making any decisions based on this plan.



Particulars

Property

Rosecroft Avenue, Hampstead, London NW3
£650,000

Rooms



1



1



2

Features

- Share Of Freehold
- 786 Sq Ft
- Close to the Heath
- Walking distance to Finchley Road

Information

Council Tax



Oliver Kent

oliver.kent@vitaproperties.uk
+4477 7274 0351



Scan for our website





T: +4420 7759 2199

E: enquiries@vitaproperties.uk

Disclaimer: These particulars are prepared as a general guide for prospective purchasers or tenants and do not constitute, nor constitute part of, an offer or contract. All statements, descriptions, and measurements contained herein are given in good faith and are believed to be correct at the time of printing, but any intending purchaser or tenant should not rely on them as statements or representations of fact and must satisfy themselves by inspection or otherwise as to their correctness. Floor plans and photographs are for illustrative purposes only and may not be to scale. The position and size of doors, windows, appliances, and other features are approximate. Anti-Money Laundering (AML): In line with the Money Laundering, Terrorist Financing and Transfer of Funds Regulations 2017, we are required to carry out customer due diligence checks. Buyers/tenants will be asked to provide proof of identity, address, and source of funds before a sale or rental can be agreed. Data Protection (GDPR): Personal information supplied to Vita Properties will be processed in accordance with the General Data Protection Regulation (GDPR). Your details may be retained for legitimate business purposes relating to property services. Full details of our Privacy Policy are available on request.

All rights reserved.