



The Avenue

QUEENS PARK, LONDON NW6

£1,500,000



Stunning apartment offering in excess of 1900sq ft arranged of the upper floors of this newly created development. 25ft reception/dining space with hardwood flooring and glass doors leading out to a private terrace.

Beautiful kitchen with an array of wall and base units, integrated appliances, quartz work surfaces continuing to a breakfast bar. Principal bedroom benefitting from en-suite, dressing room and sliding doors leading out to a further terrace, three further double bedrooms with two further en-suites, further bathroom guest W/c.

Further benefits include a concierge, secure underground parking, bicycle storage, access to a private gym and a communal courtyard.

The Avenue is one of NW6 most sought-after tree lined turnings, within easy proximity of Brondesbury Park London Overground Station and Kilburn Station for the "Jubilee Line" along with independent cafés and restaurant's on Salusbury Road and Chamberlayne Road.







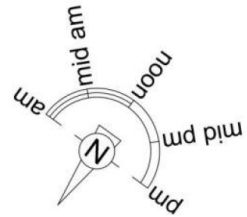




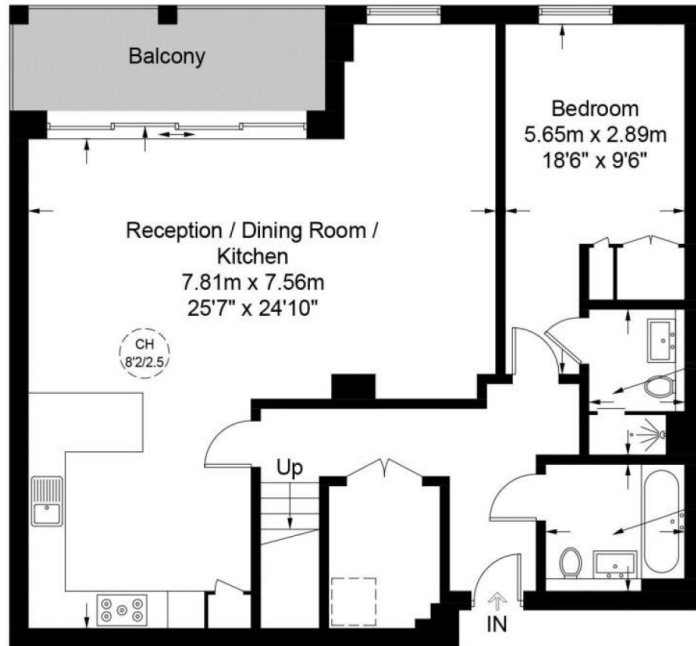
# The Avenue, NW6

Approximate Gross Internal Area = 1927 sq ft / 179.0 sq m

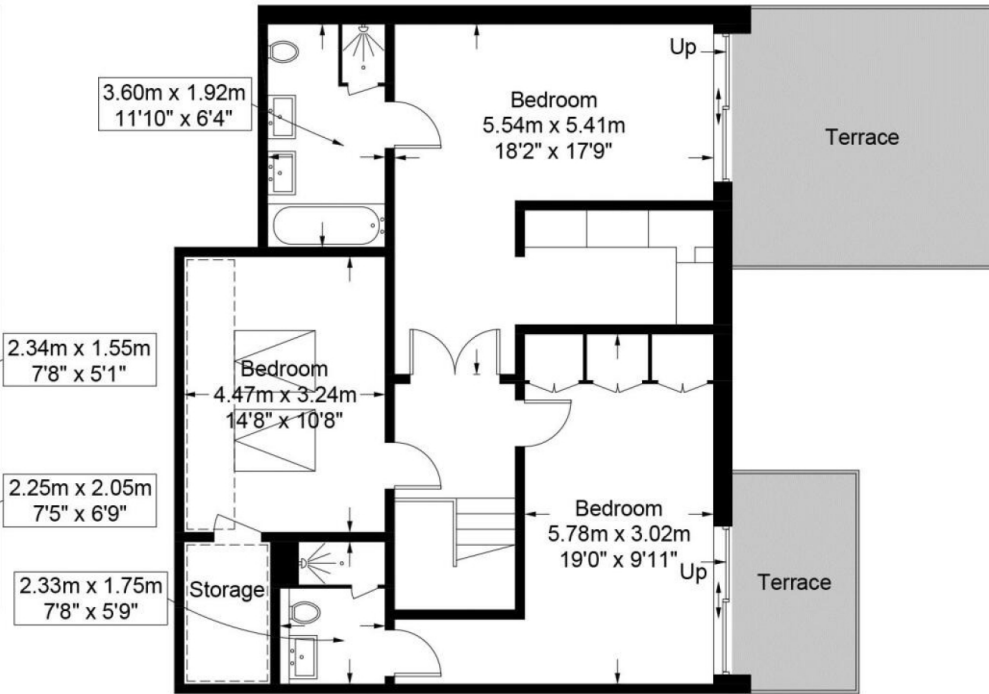
Restricted Height = 81 sq ft / 7.5 sq m



= Reduced headroom below 1.5m / 5'0"



Second Floor



Third Floor

This plan is for layout guidance only and is not drawn to scale unless stated. All dimensions, including windows, doors, and the Total Gross Internal Area (GIA), are approximate. For precise measurements, please consult a qualified architect or surveyor before making any decisions based on this plan.



Certified  
Property  
Measurer

# Particulars

## Property

The Avenue, Queens Park, London NW6  
£1,500,000

## Rooms



## Features

- Split Level Apartment Offering In Excess Of 1900sq Ft
- Four Double Bedrooms
- Three Bathrooms (Three En-suites)
- Private Terraces

## Information

Council Tax



Oliver Kent

oliver.kent@vitaproperties.uk  
+4477 7274 0351



Scan for our website





T: +4420 7759 2199  
E: [enquiries@vitaproperties.uk](mailto:enquiries@vitaproperties.uk)

Disclaimer: These particulars are prepared as a general guide for prospective purchasers or tenants and do not constitute, nor constitute part of, an offer or contract. All statements, descriptions, and measurements contained herein are given in good faith and are believed to be correct at the time of printing, but any intending purchaser or tenant should not rely on them as statements or representations of fact and must satisfy themselves by inspection or otherwise as to their correctness. Floor plans and photographs are for illustrative purposes only and may not be to scale. The position and size of doors, windows, appliances, and other features are approximate. Anti-Money Laundering (AML): In line with the Money Laundering, Terrorist Financing and Transfer of Funds Regulations 2017, we are required to carry out customer due diligence checks. Buyers/tenants will be asked to provide proof of identity, address, and source of funds before a sale or rental can be agreed. Data Protection (GDPR): Personal information supplied to Vita Properties will be processed in accordance with the General Data Protection Regulation (GDPR). Your details may be retained for legitimate business purposes relating to property services. Full details of our Privacy Policy are available on request.

All rights reserved.